

## 6 Appendix

---

A: References .....	6.2
B: Planning Process .....	6.6
C: Public Survey .....	6.41
D: Adoption Resolutions.....	6.58
E: Critical/Essential Facilities .....	6.67
F: MDC Wildfire Data Search .....	6.73

DRAFT

## A: References

---

1. 2018 Missouri State Hazard Mitigation Plan,  
[https://sema.dps.mo.gov/docs/programs/LRMF/mitigation/MO\\_Hazard\\_Mitigation\\_Plan2018pdf](https://sema.dps.mo.gov/docs/programs/LRMF/mitigation/MO_Hazard_Mitigation_Plan2018pdf)
2. Missouri Hazard Mitigation Viewer, <http://bit.ly/MoHazardMitigationPlanViewer2018>
3. U.S. Dept. of Commerce, United States Census Bureau, <https://data.census.gov/cedsci/>
4. USGS, National Geologic Map Database, [https://ngmdb.usgs.gov/Prodesc/proddesc\\_10014.htm](https://ngmdb.usgs.gov/Prodesc/proddesc_10014.htm)
5. USACE, National Levee Database, <https://levees.sec.usace.army.mil/#/>
6. FEMA, Disaster Information, <https://www.fema.gov/disasters>
7. Missouri Department of Elementary & Secondary Education,  
<https://ogi.oa.mo.gov/DESE/schoolSearch/index.html>
8. USDOT, Bridges & Structures, <https://www.fhwa.dot.gov/bridge/nbi/no10/county.cfm>
9. USFWS, Midwest Region Endangered Species,  
<https://www.fws.gov/midwest/Endangered/lists/missouri-cty.html>
10. MDC, Field Guide, Endangered, <https://nature.mdc.mo.gov/status/endangered>
11. MDC, Find Places to Go in MO, [https://nature.mdc.mo.gov/discover-nature/find/places?area\\_name=&counties=All&location%5Bdistance%5D=50&location%5Borigin%5D=](https://nature.mdc.mo.gov/discover-nature/find/places?area_name=&counties=All&location%5Bdistance%5D=50&location%5Borigin%5D=)
12. MDC, Missouri National Register Listings, <https://dnr.mo.gov/shpo/mnrlist.htm>
13. Missouri Economic Research and Information Center, <https://meric.mo.gov/industry/business-locator>  
(Business Locator Tool) & <https://meric.mo.gov/media/pdf/rural-missouri-asset-mapping> (Rural Missouri Asset Mapping)
14. USDA, National Agricultural Statistics Service,  
[https://www.nass.usda.gov/Quick\\_Stats/CDQT/chapter/2/table/1/state/MO/county/169/year/2017](https://www.nass.usda.gov/Quick_Stats/CDQT/chapter/2/table/1/state/MO/county/169/year/2017)
15. Missouri Department of Economic Development, <https://ded.mo.gov/programs/business/missouri-works>
16. The Climate Explorer, <https://crt-climate-explorer.nemac.org/>
17. Missouri Department of Natural Resources, Dam and Reservoir Safety,  
<https://dnr.mo.gov/geology/wrc/dam-safety/>
18. Stanford University's National Performance of Dams Program, <http://npdp.stanford.edu/>
19. National Inventory of Dams, <http://geo.usace.army.mil/>
20. National Resources Conservation Service, <http://www.nrcs.usda.gov>

21. Missouri Spatial Data Information Service, <http://msdis.missouri.edu>
22. Maps of effects of drought, National Drought Mitigation Center (NDMC) located at the University of Nebraska in Lincoln, <http://www.drought.unl.edu/>
23. Historical drought impacts, National Drought Mitigation Center (NDMC) located at the University of Nebraska in Lincoln, <http://droughtreporter.unl.edu/>
24. Recorded low precipitation, NOAA Regional Climate Center, <http://www.hprcc.unl.edu>
25. Water shortages, Missouri's Drought Response Plan, Missouri Department of Natural Resources, <http://dnr.mo.gov/pubs/WR69.pdf>
26. Populations served by groundwater by county, USGS-NWIS, <http://maps.waterdata.usgs.gov/mapper/index.html>
27. Missouri Department of Natural Resources, Census of Missouri Public Water Systems 2020, <https://dnr.mo.gov/env/wpp/documents/2020-census-completed.pdf>
28. Census of Agriculture, [http://www.agcensus.usda.gov/Publications/2012/Full\\_Report/Volume\\_1,\\_Chapter\\_2\\_County\\_Level/Missouri/](http://www.agcensus.usda.gov/Publications/2012/Full_Report/Volume_1,_Chapter_2_County_Level/Missouri/) & [http://www.agcensus.usda.gov/Publications/2012/Online\\_Resources/County\\_Profiles/Missouri/](http://www.agcensus.usda.gov/Publications/2012/Online_Resources/County_Profiles/Missouri/)
29. USDA Risk Management Agency, Insurance Claims, <https://www.rma.usda.gov/Information-Tools/Summary-of-Business/Cause-of-Loss>
30. Natural Resources Defense Council, <http://www.nrdc.org/globalWarming/watersustainability/>
31. NOAA, Historical Palmer Drought Indices, <https://www.ncdc.noaa.gov/temp-and-precip/drought/historical-palmers/>
32. MO Office of Administration, Division of Budget & Planning, <https://oa.mo.gov/budget-planning/demographic-information/population-projections/2000-2030-projections>
33. U.S. Seismic Hazard Map, United States Geological Survey, <https://www.usgs.gov/natural-hazards/earthquake-hazards/earthquakes>
34. Impact of Earthquakes on the Central USA, [http://www.cusec.org/documents/aar/NMSZ\\_CAT\\_PLANNING\\_SCENARIO.pdf](http://www.cusec.org/documents/aar/NMSZ_CAT_PLANNING_SCENARIO.pdf)
35. 6.5 Richter Magnitude Earthquake Scenario, New Madrid Fault Zone map, <https://iowageologicalsurvey.org/>
36. Probability of magnitude 5.0 or greater within 100 Years, United States Geological Survey, <https://www.usgs.gov/natural-hazards/earthquake-hazards>

37. USGS, Measuring the Size of an Earthquake, [https://www.usgs.gov/faqs/how-are-earthquakes-recorded-how-are-earthquakes-measured-how-magnitude-earthquake-determined?qt-news\\_science\\_products=0#qt-news\\_science\\_products](https://www.usgs.gov/faqs/how-are-earthquakes-recorded-how-are-earthquakes-measured-how-magnitude-earthquake-determined?qt-news_science_products=0#qt-news_science_products)
38. USGS, Earthquake Hazard in the Heart of the Homeland, <https://pubs.usgs.gov/fs/2006/3125/>
39. Missouri Department of Insurance, <https://insurance.mo.gov/earthquake/>
40. Heat Index Chart & typical health impacts from heat, National Weather Service; National Weather Service Heat Index Program, <https://www.weather.gov/safety/heat-index>
41. Daily temperatures averages and extremes, High Plains Regional Climate Summary, [https://hprcc.unl.edu/climate\\_extremes.php](https://hprcc.unl.edu/climate_extremes.php)
42. Hyperthermia mortality, Missouri; Missouri Department of Health and Senior Service, <http://health.mo.gov/living/healthcondiseases/hyperthermia/pdf/hyper1.pdf>
43. Hyperthermia mortality by Geographic area, Missouri Department of Health and Senior Services, <http://health.mo.gov/living/healthcondiseases/hyperthermia/pdf/hyper2.pdf>
44. Missouri Department of Conservation Wildfire Data Search, <https://mdc12.mdc.mo.gov/Applications/MDCFIREReporting/Home/FireReportSearch>
45. Statistics, Missouri Division of Fire Safety
46. National Statistics, US Fire Administration
47. Fire/Rescue Mutual Aid Regions in Missouri
48. Forestry Division of the Missouri Department of Conservation
49. National Fire Incident Reporting System (NFIRS), <https://dfs.dps.mo.gov/programs/resources/fire-incident-reporting-system.php>
50. University of Wisconsin Silvis Lab, <http://silvis.forest.wisc.edu/data/wui-change/>
51. FEMA Map Service Center, Digital Flood Insurance Rate Maps (DFIRM), <http://msc.fema.gov/portal>
52. EPA, How's My Waterway, <https://mywaterway.epa.gov/>
53. SEMA, Flood Insurance Administration—Repetitive Loss List
54. National Centers for Environmental Information, <http://www.ncdc.noaa.gov/stormevents/>
55. FEMA Data Visualization Tool, <https://www.fema.gov/data-visualization-floods-data-visualization>
56. Missouri Department of Natural Resources, <http://www.dnr.mo.gov/geology/geosrv/envgeo/sinkholes.htm>
57. <http://www.businessinsider.com/where-youll-be-swallowed-by-a-sinkhole-2013-3>
58. <http://water.usgs.gov/edu/sinkholes.html>

59. <http://pubs.usgs.gov/fs/2007/3060/>
60. Northeastern University, [http://www.northeastern.edu/protect/wp-content/uploads/US\\_KarstMap.jpg](http://www.northeastern.edu/protect/wp-content/uploads/US_KarstMap.jpg)
61. University of Florida, How to Spot a Sinkhole, <https://ufonline.ufl.edu/infographics/how-to-spot-a-sinkhole/>
62. FEMA 320, Taking Shelter from the Storm, 3rd edition, [http://www.weather.gov/media/bis/FEMA\\_SafeRoom.pdf](http://www.weather.gov/media/bis/FEMA_SafeRoom.pdf)
63. Lightning Map, National Weather Service, [http://www.lightningsafety.noaa.gov/stats/08\\_Vaisala\\_NLDN\\_Poster.pdf](http://www.lightningsafety.noaa.gov/stats/08_Vaisala_NLDN_Poster.pdf)
64. Death and injury statistics from lightning strikes, National Weather Service.
65. Wind Zones in the U.S. map, FEMA, [https://www.fema.gov/pdf/library/ism2\\_s1.pdf](https://www.fema.gov/pdf/library/ism2_s1.pdf)
66. Annual Windstorm Probability (65+knots) map U.S. 1980-1994, NSSL, [http://www.nssl.noaa.gov/users/brooks/public\\_html/bigwind.gif](http://www.nssl.noaa.gov/users/brooks/public_html/bigwind.gif)
67. Hailstorm intensity scale, The Tornado and Storm Research Organization (TORRO), <http://www.torro.org.uk/site/hscale.php>
68. National Severe Storms Laboratory – hail map, [http://www.nssl.noaa.gov/users/brooks/public\\_html/bighail.gif](http://www.nssl.noaa.gov/users/brooks/public_html/bighail.gif)
69. Enhanced F Scale for Tornado Damage, NWS, [www.spc.noaa.gov/faq/tornado/ef-scale.html](http://www.spc.noaa.gov/faq/tornado/ef-scale.html)
70. Enhanced Fujita Scale's damage indicators and degrees of damage table, NOAA Storm Prediction Center, [www.spc.noaa.gov/efscale/ef-scale.html](http://www.spc.noaa.gov/efscale/ef-scale.html)
71. Tornado Activity in the U.S. map (1950-2006), FEMA 320, Taking Shelter from the Storm, 3rd edition;
72. Tornado Alley in the U.S. map, <http://www.tornadochaser.net/tornalley.html>
73. Tornado History Project, map of tornado events, <http://www.tornadohistoryproject.com/tornado/Missouri>
74. Wind chill chart, National Weather Service, <http://www.nws.noaa.gov/om/winter/windchill.shtml>
75. Average Number of House per year with Freezing Rain, American Meteorological Society. "Freezing Rain Events in the United States." <http://ams.confex.com/ams/pdfpapers/71872.pdf>

## B: Planning Process

---

### HMPC Mailing list

Randy Verkamp  
Presiding Commissioner  
200 N. Main Street  
Rolla, MO 65401

*Pam Green*

Gary Hicks  
Associate Commissioner  
200 N. Main Street  
Rolla, MO 65401

Larry Stratman  
Associate Commissioner  
200 N. Main Street  
Rolla, MO 65401

Rick Lisenbe  
Sheriff  
200 N. Main Street  
Rolla, MO 65401

Corporal Mike Kirn  
Phelps County EMD  
200 N. Main Street  
Rolla, MO 65401

Louis J. Magdits, IV  
Rolla Mayor  
P.O. Box 979  
Rolla, MO 65401

John Butz  
City Administrator  
P.O. Box 979  
Rolla, MO 65401

Steve Flowers  
Community Development Director  
P.O. Box 979  
Rolla, MO 65401

Sean Fagan  
Chief of Police  
P.O. Box 979  
Rolla, MO 65401

Ron Smith  
Fire Chief  
P.O. Box 979  
Rolla, MO 65401

Steve Hargis  
Public Works Director  
P.O. Box 979  
Rolla, MO 65401

Rodney Bourne  
Rolla Municipal Utilities GM  
P.O. Box 979  
Rolla, MO 65401

Floyd Jernigan  
Parks & Recreation Director  
P.O. Box 979  
Rolla, MO 65401

Brady Willson  
Director of Environ. Serv.  
P.O. Box 979  
Rolla, MO 65401

Brad Woods  
Rolla EMD  
P.O. Box 979  
Rolla, MO 65401

Billy Martin  
Doolittle Mayor  
380 Eisenhower  
Doolittle, MO 65401

Vincent Giancolone  
Police Chief  
380 Eisenhower  
Doolittle, MO 65401

Superintendent  
380 Eisenhower  
Doolittle, MO 65401

David Simpson  
Water/Sewer Superintendent  
P.O. Drawer K  
Newburg, MO 65550

*John M. Douglas II*  
Electric Superintendent *Edgar Springs*  
P.O. Drawer K  
Newburg, MO 65550

Street Superintendent  
P.O. Drawer K  
Newburg, MO 65550

Newburg EMD  
P.O. Drawer K  
Newburg, MO 65550

Rick Krawiecki  
St. James Mayor  
100 S. Jefferson  
St. James, MO 65559

Ron Jones  
Police Chief  
100 S. Jefferson  
St. James, MO 65559

William Keith Gallion  
Edgar Springs Mayor  
P.O. Box 13  
Edgar Springs, MO 65462

Joe Hohner  
Chief of Police  
P.O. Box 13  
Edgar Springs, MO 65462

Everett Perkins  
Superintendent Water  
P.O. Box 13  
Edgar Springs, MO 65462

James Poucher  
Newburg Mayor  
P.O. Drawer K  
Newburg, MO 65550

*Phyllis Harris*  
*Newburg City*  
*clerk*

Kris Finch  
Police Chief  
P.O. Drawer K  
Newburg, MO 65550

John M. Douglas II  
Fire Chief/EMD  
149-199 Matlock Drive  
St. James, MO 65559

Chuck Hitch  
Electric Supervisor  
100 S. Jefferson  
St. James, MO 65559

Danny Scheel  
Street Supervisor  
100 S. Jefferson  
St. James, MO 65559

*Randy Caffery*  
Dr. Lynn Reed, Supt.  
Newburg R-II  
P.O. Box C  
Newburg, MO 65550

John Richards  
Sho-Me Power Cooperative  
P.O. Box D  
Marshfield, MO 65706

Fidelity Communications  
64 North Clark St.  
Sullivan, MO 63080

Dr. Greg Edwards  
Webster University  
1103 Kingshighway  
Rolla, MO 65401

Christina Ayres  
East Central College  
500 Forum Drive  
Rolla, MO 65401

Administrator  
Missouri Veterans Home  
620 N. Jefferson St.  
St. James, MO 65559

Chris Mueller  
Centurytel  
P.O. Box 158  
St. James, MO 65559

Lyle Thomas  
Public Works Director  
100 S. Jefferson  
St. James, MO 65559

John Cutsinger  
Parks & Recreation Director  
100 S. Jefferson  
St. James, MO 65559

John Fluhrer, Supt.  
Phelps County R-III  
17790 State Route M  
Edgar Springs, MO 65462

Charter Cable  
12405 Powers Court Drive  
St. Louis, MO 63131

Carmen Hartwell  
Gascosage Electric Cooperative  
P.O. Box G  
Dixon, MO 65459

Kerstin Ellis  
Drury University  
1034 S. Bishop Ave  
Rolla, MO 65401

Cory Elfrink  
Columbia College  
500 Blue's Lake Parkway  
Rolla, MO 65401

Cedar Knoll Home  
13635 State Rt. V  
St. James, MO 65559

Dave Griffith  
American Red  
431 E. McCarty  
Jefferson City, MO 65101

Administrator  
1605 Martin Springs Drive  
Rolla, Mo 65401

Merlyn Johnson  
St. James R-1  
122 East Scioto Street  
St. James, MO 65559

Dr. Aaron Zalis, Supt.  
Rolla 31  
500A Forum Drive  
Rolla, MO 65401

Verizon Wireless  
2110 N. Bishop Ave.  
Rolla, MO 65401

Tony Mallory  
Crawford Electric Cooperative  
P.O. Box 10  
Bourbon, MO 65441

Mary Gapsch  
Metro Business College  
1202 East Highway 72  
Rolla, MO 65401

Debbie Hallinar  
PCRMC Medical Group, Inc.  
1050 W. Tenth St.  
Rolla, MO 65401

County Valley Home  
15750 County Rd. 2430  
St. James, MO 65559

Aaron Bradshaw  
Intercounty Electric Cooperative  
P.O. Box 209  
Licking, MO 65542

Michelle Bresnahan  
Missouri Science & Technology  
108 Campus Support Facility  
Rolla, MO 65409

Ferndale, Inc  
15650 County Rd. 2430  
St. James, MO 65559

Heritage Park Skilled Care  
1200 McDutchen Rd  
Rolla, MO 65401

Lea's Haven  
803 E. 12th Street  
Rolla, MO 65401

Parkside Assisted Living  
1700 E. 10th Street Rolla,  
MO 65401

Presbyterian Manor  
1200 Homelife Plaza  
Rolla, MO 65401

Rolla Manor Care  
1800 White Columns Dr.  
Rolla, MO 65401

Rosewood Residential Care  
10880 Hanley Dr.  
Rolla, MO 65401

St. James Nursing Center  
P.O. Box 69  
St. James, MO 65559

Administrator  
Boys & Girls Town of Missouri  
P.O. Box 189  
St. James, MO 65559

Captain Eddie Blaylock  
Missouri State Highway Patrol  
P.O. Box 128  
Rolla, MO 65401

Jeff Faulkner  
BNSF Railway  
508 E. Main St  
Cuba, MO 65453

All Star Gas  
12055 County Rd. 3110  
Rolla, MO 65401

Carol Daniels  
City Clerk  
P.O. Box 979  
Rolla, MO 65402

James Baalman  
Ferrellgas  
602 E. 18th Street  
Rolla, MO 65401

Bryan Lambeth  
St. James Ambulance  
P.O. Box 296  
St. James, MO 65559

Forest Supervisors Office  
Mark Twain National Forest  
401 Fairgrounds Rd.  
Rolla, MO 65401

Missouri Department of Conservation  
12655 State Rt. Y  
Rolla, MO 65401

Preston Kramer  
MoDOT  
17855 Hwy B  
St. James, MO 65559

Poe's Gas  
P.O. Box 28  
Rolla, MO 65401

General Manager  
Walmart Distribution Center  
1100 Matlock Dr.  
St. James, MO 65559

MoGas Pipeline LLC  
329 Joesephville Road  
Wentzville, MO 63385

Commanding Officer  
MONG Amory  
201 Fairgrounds Rd  
Rolla, MO 65401

Della Bishop  
City Clerk  
380 Eisenhower  
Doolittle, MO 65401

Rachel Lucas  
City Administrator  
P.O. Box 13  
Edgar Springs

Pamela Grow  
Phelps County Clerk  
200 N. Main Street  
Rolla, MO 65401

Sarah Wheeler  
City Clerk  
100 S. Jefferson  
St. James, MO 65559

Phillis Harris  
City Clerk  
P.O. Drawer K  
Newburg, MO 65550

American Red Cross  
431 E. McCarty  
Jefferson City, MO 65101

NUSTAR Pipeline  
7340 W. 21<sup>st</sup> N, Ste. 200  
Wichita, KS 67205



## MEMORANDUM

TO: Phelps County Hazard Mitigation Planning Committee  
FROM: Tammy Snodgrass, MRPC Environmental Programs Manager/Assistant Director  
DATE: January 16, 2020  
SUBJECT: Hazard mitigation planning meeting January 30, 2020

The Meramec Regional Planning Commission (MRPC) has been contracted by Phelps County and the State Emergency Management Agency (SEMA) to review and update the multi-jurisdictional hazard mitigation plan for Phelps County, its cities and school districts. The project is being funded by state and federal dollars with matching funds from Phelps County. We need your help to successfully complete this project.

The county must submit the first draft of an updated hazard mitigation plan to SEMA and FEMA by April 12, 2021 in order to continue to be eligible for some hazard mitigation grants, so it is in every jurisdiction's best interest to participate in the review and update of this plan. Hazard mitigation funds are used for such projects as floodplain buyouts, burying electrical lines, tornado shelters for schools, etc.

**A meeting of the Phelps County hazard mitigation planning committee is scheduled for Thursday, January 30 at 10:00 a.m. in the multi-purpose room 149 on the first floor of the Phelps County courthouse located at 200 North Main Street, Rolla, Mo.** The focus of this meeting will be to review existing goals and action items and determine if any changes need to be made. In addition, the group will need to report on what action items have been accomplished and what mitigation activities have occurred since the plan was updated five years ago. This can include activities such as improvements to roads and bridges that were prone to flooding, new programs that have reduced risk to residents and/or businesses and new tornado shelters that have been constructed in the past five years

As the county, each city and school district are required to participate in the planning process and will be asked to formally approve and adopt the Phelps County Hazard Mitigation Plan, we strongly encourage you to participate in this committee or to send a representative who will convey your jurisdiction or department's needs for hazard mitigation as well as report on your hazard mitigation accomplishments. It is important to include representatives from road and bridge, local planners, emergency management offices, law enforcement, city/county officials, fire protection, local health services, disaster relief volunteer services and other appropriate groups.

Thank you for your assistance in addressing hazard mitigation for Phelps County. If you have any questions, contact me at (573) 265-2993, extension 104 or via e-mail: [tsnodgrass@merameregion.org](mailto:tsnodgrass@merameregion.org). I look forward to seeing you at the meeting.

TS

# **Phelps County Multi-Jurisdictional Hazard Mitigation Plan Update Planning Meeting**

Thursday, January 30, 2020 ~ 10:00 a.m.  
Multi-Purpose Room (149), Phelps County Courthouse

## **AGENDA**

- I. Welcome/Introductions – Tammy Snodgrass, Assistant Director, Meramec Regional Planning Commission
- II. Hazard Mitigation Planning Purpose
- III. Grant Programs Linked to Approved Plan
- IV. Planning Tasks / Multi-jurisdictional Approach
- V. Participation Requirements
- VI. Public Involvement
- VII. Data Collection Questionnaires
- VIII. Discussion of Hazards
- IX. Critical Facilities
- X. Next Steps in the Planning Process
- XI. Set Next Meeting Date(s)

## NOTICE OF PUBLIC MEETING

Date and time of posting: **January 30, 2020 at 10:00 a.m.**

Notice is hereby given that the **Phelps County Hazard Mitigation Planning Committee** will meet at 10:00 a.m. on **Thursday, January 30, 2020** at the Phelps County Courthouse, multi-purpose room 149, located at 200 Main Street, Rolla, Mo. 65401

The tentative agenda of this meeting includes:

- Welcome and Introductions
- Hazard Mitigation Planning Purpose
- Grant Programs Linked to Approved Plan
- Planning Tasks/Multi-Jurisdictional Approach
- Participation Requirements
- Public Involvement
- Data Collection Questionnaires
- Discussion of Hazards
- Critical Facilities
- Next Steps in the Planning Process
- Setting of Date and Time for Next Meeting
- Adjourn

Representatives of the news media may obtain copies of this notice by contacting:

Tamara Snodgrass  
#4 Industrial Drive  
St. James, MO 65559  
(573) 265-2993

[tsnodgrass@meramecregion.org](mailto:tsnodgrass@meramecregion.org)

If you require any accommodations (i.e. qualified interpreter, large print, hearing assistance) in order to attend this meeting, please notify this office at 573-265-2993 no later than 48 hours prior to the scheduled commencement of the meeting.

**Phelps County Hazard Mitigation Plan Review Meeting**  
**January 30, 2020 ~ 10:00 a.m.**

Name	Representing	Email Address	Phone #	Address
Wendy Squires	Phelps Health	wsquires@phelpshealth.org	573-458-7720	1000 West 10th St Rolla MO 65401
William Galloway	Edgar Springs City	edgarspringsmo@ycharr.com	573-435-6334	555 Broadway St P.O. Box 13 Edgar Springs Mo. 6554
Melissa Klett	Edgar Springs Rural Fire protection Dist.	Missi Klett@gmail.com	573-202-4457	1501 Broadway St Edgar Springs Mo. 65402
Brad Woods	City of Rolla EMD	Bwoods@Rollacity.org	573-578-6340	1410 E. 10th Rolla, Mo 65401
Lyle D. Thomas	City of St James	lthomas@stjamesmo.org	573-265-7011	100 S. Jefferson St. James
STEVE Flowers	City of Rolla	stflowers@rollacity.org	573-424-6973	901 N. Elm Rolla Mo 65401
Michelle Bresnahan	Missouri S&T	mem@mst.edu	573-341-4240	1201 N. State St. Rolla, Mo. 65401
EDDIE BLAYLOCK	MSHP-TROOP I	edwin.blaylock@ mshp.dps.mo.gov	314-724-4275	1301 NAGOGAM RD. WEST. ROLLA Mo. 65401
STEVE DAVIS	MSHP-TROOP I	STEVE.DAVIS@MSHP. DPS.MO.GOV	573-368-2345	TROOP I H.Q. P.O. Box 128 ROLLA, Mo. 65402

Name	Representing	Email Address	Phone #	Address
John Cutsinger	St. James Parks Dept	cutsinger@stjamesmo.org	573-263-9140	106 S. Jefferson St. James MO 65559
Dave Roberts	SST University Police	robertsd@stj.edu	573-341-4345	1101 N. STATE ST St. James MO 65509
Cari Postine	Sho-me Power	cpostine@shomepower.com	417-859-2465	PO Box D Marshfield, MO 65409
Ron Jaes	St. James Police	rjaes@stjpolice.org	573-263-5172	200 N. Barnard St. James MO 65559
GARY W. HICKS	Phelps County Commission	gary.hicks@phelpscounty.org	573-262-9928	200 NORTH MAIN Rolla
Chad Davis	Rolla Municipal Utilities	cdavis@rollamunicipalutilities.org	573-264-2195	102 West 9th Rolla MO 65402
Ros Smith	City of Rolla Fire-Rescue	rsmtl@rollacity.org	573-364-3989	1490 EAST 10th Rolla MO 65401
MIKE KERN	Phelps CO EM	MIKE.KERN@phelpscountysheriff.org	573-201-3208	500 W. 2nd ST Rolla MO

For immediate release  
April 22, 2020

For more information, contact  
Tammy Snodgrass at (573) 265-2993

### **Public input being accepted on Phelps County Hazard Mitigation Plan until May 15**

PHELPS COUNTY—Public input is being accepted until May 15, 2020, on the Phelps County Hazard Mitigation Plan. The public survey is available on Meramec Regional Planning Commission's website at <http://www.meramecregion.org/surveys/>.

The federal government requires all states and local governments to have hazard mitigation plans approved by the Federal Emergency Management Administration (FEMA) that are consistent with the Disaster Mitigation Act of 2000. Approved mitigation plans are required to maintain eligibility for certain types of federal Hazard Mitigation Assistance Grants.

One of the key components of a hazard mitigation plan is public input during the planning process. The planning committee, comprised of representatives from the Phelps County Commission, the incorporated cities, emergency response agencies, utility providers and public school districts, will be evaluating information on the hazards that impact each jurisdiction within Phelps County.

Formed in 1969, MRPC is a voluntary council of governments serving Crawford, Dent, Gasconade, Maries, Osage, Phelps, Pulaski and Washington counties and their respective cities. Gasconade County Presiding Commissioner Larry Miskel serves as chairman of the board. A professional staff of 34 offers technical assistance and services, such as grant preparation and administration, housing assistance, transportation planning, environmental planning, ordinance codification, business loans and other services to member communities.

If you have questions, please contact Tammy Snodgrass at MRPC at 573-265-2993 or by email at [tsnodgrass@meramecregion.org](mailto:tsnodgrass@meramecregion.org).

To keep up with the latest MRPC news and events, visit the MRPC website at [www.meramecregion.org](http://www.meramecregion.org) or on Facebook at [www.facebook.com/meramecregion](https://www.facebook.com/meramecregion).

3/13/2020

Dear Phelps County Hazard Mitigation Planning Committee Members:

Here is my first stab at editing the action items that were shared out at the January 30<sup>th</sup> meeting. Please see how I marked up the document below. I was able to reduce the list down from 58 to 45, and if we add all the items marked in gray – that will reduce it by seven more to 38. I really want folks to look this over closely and make sure I'm not removing something that needs to stay in the plan. At the same time, I want you to look at the items and let me know if some that I've left in the plan have been accomplished or if progress has been made on them.

I have gone through the existing list and highlighted the ones I think can be removed in **gray**. These may be good activities, but (in my opinion) they do not rise to the level of being included in the plan; would not be an activity that hazard mitigation grant funds would be requested for; or are an on-going activity that is already imbedded in local policy and procedure.

Action items that are repetitive or can be combined are marked in **aqua**, with notes on what I did in **red italic**.

The action items that I believe the county has achieved, that can be taken off the list, I have highlighted in **green**.

Revisions to action items are marked in **blue**.

We will be going over this list in depth at the March 26<sup>th</sup> meeting. Please come prepared to discuss and share your thoughts.

Thank you for your assistance and time. I've attached an in-kind match form for you to use as well.

Tammy Snodgrass  
Meramec Regional Planning Commission  
(573) 265-2993  
[tsnodgrass@meramecregion.org](mailto:tsnodgrass@meramecregion.org)

**Figure 4.4 Prioritization of Mitigation Actions**

Figure 4.4 Prioritization of Mitigation Actions		3 = Def YES 2 = Maybe YES							1 = Prob NO 0 = Def NO						
Action No.	Mitigation Actions	S	T	A	P	L	E	E	STAPLEE Total	Losses Avoided (2 pts. Each)	Benefit	Cost	B/C Total	Total	Priority
1.1.1	Maintain a hazard mitigation public awareness program to include: benefits of hazard mitigation planning and projects; personal emergency preparedness; participation in emergency notification systems where available; information on individual hazard mitigation projects such as tying down hazardous materials tanks; how to shut off utilities; precautions to take during threatening weather events; etc. Combined 1.1.1, 1.1.3, 1.1.4, 1.2.2, 3.1.2, 3.2.1, 3.3.2, 6.2.2	3	3	3	3	3	2	3	20	IC, PD, LF, EMCC	8	-1	7	27	H
1.1.2	Promote development of emergency plans by businesses and public entities.	3	3	3	3	3	2	3	20	IC, PD, LF, EMCC	8	-1	7	27	H
1.1.5	Educate school staff on natural hazards and make sure all staff are familiar with school emergency plan including evacuation and safety procedures.Are they already doing this?	3	3	3	3	3	3	3	21	IC, PD, LF EMCC	8	-1	7	28	H
1.1.6	Schools need to continue to conduct emergency preparedness exercises on a regular basis. Completed	3	3	3	3	3	2	3	20	IC, PD, LF, EMCC	8	-1	7	27	H
1.1.7	Regularly review and update school emergency plans - Completed	3	3	3	3	3	3	3	21	IC, PD, LF, EMCC	8	-1	7	28	H
1.1.8	Encourage the designation of storm shelters and the construction of tornado safe rooms in every school that does not have one.	3	3	3	3	3	1	3	19	IC, EMCC	4	-5	-1	18	H
1.2.1	Continue to encourage cities to budget for and obtain early warning systems and improved communications systems. Combined with 5.1.2	3	3	2	3	3	1	3	18	IC, PD, LF, EMCC	8	-3	5	23	H



1.2.3	Continue to partner with local radio stations to ensure that appropriate warning of impending disasters is provided to all residents of impending disasters. Complete part of policy and procedure.	3	3	3	3	3	3	3	21	IC, EMCC	4	-1	3	24	H
1.2.4	Monitor developments in data availability concerning the impact of disasters such as dam failure, tornados, sinkholes, land subsidence and wildfire upon Phelps County and all jurisdictions through local, state and federal agencies for use in hazard mitigation planning. Combined with 2.3.3,	3	3	3	3	3	3	3	21	IC, PD, LF, EMCC	8	-1	7	28	H
1.3.1	Continue to encourage tree trimming and dead tree removal programs by utility companies and local government. County is working on bid specs for tree trimming and tree removal services. RMU has a tree trimming program in place for Rolla. Coops do trimming. Telecommunications/cable do not do any trimming. Rolla public works does dangerous tree issues. St. James contracts with a company to trim trees around power lines and trees that are considered a hazard.	3	3	3	3	3	2	2	19	IC, PD, LF, EMCC	8	-3	5	24	H
1.3.2	Continue to examine road and bridge upgrades to improve drainage and reduce flooding and the risk to residents and property. Ongoing – CR 7050 across Little Beaver Creek – to improve water flow and reduced flooding that was occurring due to previous dam like water crossing. Old bridge did not accommodate emergency vehicles – major improvement. 100 culverts improved per year. Improve flows of wet weather creeks, clean out ditches routinely to improve stormwater flow.	3	3	2	3	3	2	2	18	IC, PD, LF, EMCC	8	-1	7	25	H

Figure 4.4 Prioritization of Mitigation Actions										3 = Def YES		1 = Prob NO									
										2 = Maybe YES		0 = Def NO									
Action No.	Mitigation Actions						S	T	A	P	L	E	E	STAPLEE Total	Losses Avoided	(2 pts. Each)	Benefit	Cost	B/C Total	Total	Priority

1.3.3	Establish designated shelters for residents to be used during tornado threats, as cooling centers during extreme heat or power outages and/or as shelters during other disasters.	3	3	3	3	3	3	3	21	IC, LF, EMCC	6	-1	5	26	H
1.3.4	Facilities that house vulnerable populations such as disabled and elderly should review alternative locations for sheltering residents and MOUs with “sister” facilities.	3	2	2	3	3	2	3	18	IC, EMCC	4	-1	3	21	H
1.3.5	Continue to work to increase availability (if necessary construction) of certified storm shelters for individual families and large groups, including near large employment centers and schools. <i>Combined 5.2.3</i>	3	3	3	3	3	1	3	19	IC, EMCC	4	-5	-1	18	M
2.1.1	Continue to encourage a self-inspection program at critical facilities to assure that building infrastructure is earthquake and tornado resistant. <i>OK – remove.</i>	3	2	2	3	3	1	3	17	IC, PD, LF, EMCC	8	-5	3	20	H
2.1.2	Continue to encourage businesses and public entities to develop and implement emergency plans. <i>OK – remove.</i>	3	3	3	3	3	3	3	21	IC, PD, LF, EMCC	8	-3	5	26	H
2.1.3	Encourage the installation of backup generators for critical infrastructure such as water systems and emergency services. <i>Rolla Fire has generators for their facilities. City of Rolla at city hall, Courthouse/Sheriff, emergency shelter in Rolla has generator, MHP, Phelps Health Hospital, St. James Fire, St. James Ambulance, Rolla Police,</i>	3	3	3	3	3	2	3	20	LF, EMCC	4	-3	1	21	H
2.2.1	Educate residents, realtors and contractors about the dangers of floodplain development and the benefits of the NFIP. <i>MRPC does press releases every year and distributes a brochure. Rolla has a review of what is built in the floodplain. St. James has brochures available at city hall.</i>	2	3	3	2	3	2	3	18	IC, PD, LF, EMCC	8	-1	7	25	H
2.2.2	Encourage development of storm water management plans in those jurisdictions that do not currently have them and in all new residential and commercial development. <i>Combined 5.1.3 County requires subdivisions in unincorporated areas to have a stormwater accommodation plan. Rolla requires a stormwater plan from developers as well.</i>	3	2	2	2	3	2	3	18	IC, PD, LF, EMCC	8	-3	5	23	H
2.2.3	Continue to enforce flood damage prevention/floodplain management ordinances in compliance with NFIP requirements.	2	3	3	2	3	2	3	18	IC, PD, LF, EMCC	8	-3	5	23	H

2.2.4	Continue to look at ways to reduce vulnerabilities in the Beaver Creek area and along the Gasconade River including elevations and buyouts. <b>Made major accommodations with new culverts, new bridge to improve stormwater. See earlier make this statement more general to apply to any area for buyouts elevations.</b>	2	2	2	2	3	2	3	15	IC, PD, EMCC	6	-5	1	16	M
2.3.1	Encourage minimum standards for building codes in all cities <b>all jurisdictions where they currently don't exist?? Gary will get back to me on this one.</b>	2	3	2	2	3	3	3	18	IC, PD, LF, EMCC	8	-1	7	26	H
2.3.2	Encourage local governments to develop and implement regulations for securing hazardous materials tanks and mobile homes to reduce hazards during storms and flooding. <b>Is this and the one above even achievable? Make it a Medium priority? L, P, A? On both of these – send out to jurisdictions without the standards – do they want to include or drop?</b>	2	2	2	2	3	3	3	17	IC, PD, LF, EMCC	8	-3	5	22	H

**Figure 4.4 Prioritization of Hazard Mitigation Actions**

		3 = Def YES							1 = Prob NO						
		2 = Maybe YES							0 = Def NO						
Action No.	Mitigation Actions	S	T	A	P	L	E	E	STAPLEE Total	Losses Avoided (2 pts. Each)	Benefit	Cost	B/C Total	Total	Priority
3.1.1	<b>Distribute SEMA brochures on natural disasters, preparedness and NFIP at public facilities and events.</b> - Completed	3	3	2	3	3	3	3	20	IC, PD, LF, EMCC	8	-1	7	27	H
3.1.3	<b>Encourage and promote weather spotter classes throughout the county.</b> – Completed <b>still offered through SEMA.</b>	3	3	3	3	3	3	3	21	IC, PD, LF, EMCC	8	-1	7	28	H
3.1.4	Educate staff and parents on school safety protocols.	3	3	3	3	3	3	3	21	IC, LF, EMCC	6	-1	5	26	H

3.2.2	Encourage meetings of EMD, city/county officials & SEMA to familiarize officials with mitigation planning, implementation & budgeting for mitigation projects. – Leave in – discuss what has been done.	3	3	3	2	3	2	3	19	IC, PD, LF, EMCC	8	-1	7	26	H
3.3.1	Re-evaluate the hazard mitigation plan, merge with other community planning and coordinate and integrate hazard mitigation activities, where appropriate, with emergency operations plans and procedures. Combined with 4.2.2 – or has this been accomplished? Has been done to some degree – continuing.	3	2	2	2	3	1	3	16	IC, PD, LF, EMCC	8	-3	5	21	H
3.4.3	Encourage the development of a county-wide CERT and/or VOAD program and educate the public on how they can benefit from these types of programs. MRPC does CERT training once per year. Phelps Health has one at the hospital	3	3	3	3	3	3	3	21	IC, PD, LF, EMCC	8	-1	7	28	H
4.1.1	Continue to encourage joint meetings of different organizations/agencies for mitigation related planning. Leave in - Continuing – MoDOT, County, MDC, MDNR, Corps on the Beaver Creek bridge.	3	3	3	3	3	2	3	20	IC, PD, LF, EMCC	8	-1	7	27	H
4.1.2	Continue to encourage joint training (and drills) between agencies, public and private entities (including schools/businesses). Rolla Fire does regular drills working with multiple agencies, MS&T, state agencies – regularly – Achieved. Brett Hendrix also does them. PAM also does annual exercises. COMPLETED.	3	2	2	3	3	2	3	18	IC, PD, LF, EMCC	8	-1	7	25	H
4.1.3	Pool different agency resources to achieve widespread mitigation planning results. Ongoing. Airport – FAA, city of Rolla corporate agreement. North Outer Road – Incident by-pass route for I-44 – city, county, MoDot, Fed. HWY Admin. through a CDBG grant. City did engineering. MoDOT made accommodations, Fed. Hwy gave up right-of-way for the project.	3	2	2	2	3	2	3	17	IC, PD, LF, EMCC	8	-1	7	24	H
4.1.4	Maintain updated mutual aid agreements between emergency response agencies inside and outside the region.COMPLETED – Fire mutual aid. EMS mutual aid. Mutual aid agreement between Waynesville and St. James and Mo Public Utility Assoc for all utilities.	3	3	2	3	3	3	3	20	IC, PD, LF, EMCC	8	-1	7	27	H
4.2.1	Encourage meetings between EMD, city/county & SEMA to familiarize officials with mitigation planning & implementation and budgeting for mitigation projects.REPEAT	3	3	3	3	3	3	3	21	IC, PD, LF, EMCC	8	-1	7	28	H

5.1.1	Incorporate hazard mitigation into the long-range planning and development activities of the county and each jurisdiction. <b>Progress – NFIP is most important in Phelps Co. MRPC planning activities.</b>	3	3	3	3	3	3	3	21	IC, PD, LF, EMCC	8	-1	7	29	H
5.1.2	Encourage communities to budget for enhanced warning systems. <b>Progres: County has Everbridge – available to everyone including cities. Storm sirens in Rolla, Jerome, Doolittle, Newburg, Edgar Springs, St. James.</b>	3	2	2	3	3	2	3	18	IC, LF EMCC	6	-3	3	21	H
5.1.4	<b>Coordinate and integrate hazard mitigation activities, where appropriate, with emergency operations plans and procedures.</b> – Completed is done to the extent that it can be done.	3	2	2	2	3	1	3	16	IC, PD, LF, EMCC	8	-3	5	21	H

**Figure 4.4 Prioritization of Mitigation Actions**

Figure 4.4 Prioritization of Mitigation Actions		3 = Def YES				1 = Prob NO				2 = Maybe YES				0 = Def NO			
Action No.	Mitigation Actions	S	T	A	P	L	E	E	STAPLEE Total	Loss Avoided	(2 pts. Each)	Benefit	Cost	B/C Total	Total	Priority	
5.2.1	Encourage local governments to purchase properties in the floodplain as funds become available and convert that land into public space/recreation area. <i>Progress made buyouts in Phelps County.</i>	1	2	2	1	2	1	3	12	PD, EMCC		4	-5	-1	11	L	
5.2.2	Encourage communities to discuss zoning repetitive loss properties in the floodplain as open space.	2	2	2	1	2	1	3	13	PD, EMCC		4	-1	3	16	M	
6.1.1	Work with SEMA Region I coordinator to learn about new mitigation funding opportunities. <i>OK to drop off.</i>	3	3	3	3	3	3	3	21	IC, PD, LF, EMCC		8	-1	7	28	H	
6.1.2	Structure grant proposals for road/bridge upgrades so that hazard mitigation concerns are also met. <i>Use Beaver Creek as an example. All road and bridge improvements are done with consideration for mitigation.</i>	3	2	2	2	3	2	3	17	IC, PD, LF, EMCC		8	-1	7	24	H	

6.1.3	Work with state/local/federal agencies to include mitigation in all economic and community development projects. <b>Progress – with CDBG in Rolla Ridgeview extension. West Side Development – stormwater accommodations to mitigate for less run off than occurred before construction. Had to conform to state and federal regulations.</b>	3	2	2	2	3	2	2	16	IC, PD, LF, EMCC	8	-1	7	23	H
6.1.4	Encourage local jurisdictions to budget for mitigation projects.	3	3	3	3	3	2	3	20	IC, PD, LF, EMCC	8	-5	3	23	H
6.2.1	Encourage cities and counties to implement cost-share programs with private property owners for hazard mitigation projects that benefit the community as a whole. <b>Progress – St. James will install culverts purchased by homeowners. If it benefits the city they have done some tree removal.</b>	2	1	1	1	2	2	2	11	IC, PD, LF, EMCC	8	-5	3	14	M
6.3.1	<b>Prioritize mitigation projects, based on cost-effectiveness and starting with those sites facing the greatest threat to life, health and property – Accomplished in plan</b>	3	3	2	2	3	2	3	18	IC, PD, LF, EMCC	8	-1	7	25	H

## MEMORANDUM

TO: Phelps County Hazard Mitigation Planning Committee  
FROM: Tammy Snodgrass, MRPC Environmental Programs Manager/Assistant Director  
DATE: March 13, 2020  
SUBJECT: Hazard mitigation planning meeting March 26, 2020

**The next meeting of the Phelps County hazard mitigation planning committee is scheduled for Thursday, March 26, at 10:00 a.m. in the Sky Room of the Phelps County Courthouse located at 200 North Main Street, Rolla, Mo.** The focus of this meeting will be to review pieces of the draft risk assessment for the county and review existing action items and determine what changes need to be made. A copy of a revised list of action items is attached for your review. In addition, the group will need to report on what action items have been accomplished and what mitigation activities have occurred since the plan was updated five years ago. This can include activities such as improvements to roads and bridges that were prone to flooding, new programs that have reduced risk to residents and/or businesses and new tornado shelters that have been constructed in the past five years. If you have data on damages from natural events that have occurred in the last five years, or information on hazard mitigation projects that have been accomplished in the past five years, please bring this and any other pertinent data with you to the meeting.

The Meramec Regional Planning Commission (MRPC) has been contracted by Phelps County and the State Emergency Management Agency (SEMA) to review and update the multi-jurisdictional hazard mitigation plan for Phelps County, its cities and school districts. The project is being funded by state and federal dollars with matching funds from Phelps County. We need your help to successfully complete this project. If your jurisdiction has not completed and returned the data collection questionnaire, please do so at your earliest convenience.

The county must submit the first draft of an updated hazard mitigation plan to SEMA and FEMA by April 12, 2021 in order to continue to be eligible for some hazard mitigation grants, so it is in every jurisdiction's best interest to participate in the review and update of this plan. Hazard mitigation funds are used for such projects as floodplain buyouts, burying electrical lines, tornado shelters for schools, etc.

As the county, each city and school district are required to participate in the planning process and will be asked to formally approve and adopt the Phelps County Hazard Mitigation Plan, we strongly encourage you to participate in this committee or to send a representative who will convey your jurisdiction or department's needs for hazard mitigation as well as report on your hazard mitigation accomplishments. It is important to include representatives from road and bridge, local planners, emergency management offices, law enforcement, city/county officials, fire protection, local health services, disaster relief volunteer services and other appropriate groups.

Thank you for your assistance in addressing hazard mitigation for Phelps County. If you have any questions, contact me at (573) 265-2993, extension 104 or via e-mail: [tsnodgrass@merameregion.org](mailto:tsnodgrass@merameregion.org). I look forward to seeing you at the meeting.

TS



## MEMORANDUM

TO: Phelps County Hazard Mitigation Planning Committee  
FROM: Tammy Snodgrass, MRPC Environmental Programs Manager/Assistant Director  
DATE: March 16, 2020  
SUBJECT: Hazard mitigation planning meeting March 26, 2020 - **POSTPONED**

**I am writing to let you know that the Phelps County hazard mitigation planning committee meeting scheduled for Thursday, March 26, at 10:00 a.m. is being postponed.** In light of the pandemic national emergency and the call for social distancing, it seems prudent to postpone meetings for a few weeks to help reduce the spread of COVID-19. As we do not know how long this health crisis will last, I would ask that those stakeholders and jurisdiction who are interested in continuing to provide input on the plan **to please provide me with your email**. I have email for the people who attended the first planning meeting, as well as at least one email for each jurisdiction, but please do not assume that have your direct email. Send your email contact information to [tsnodgrass@meramecregion.org](mailto:tsnodgrass@meramecregion.org). This will allow me to contact you directly in a much more timely fashion and allow me to email you documents for review.

**At this time I need feedback on the action items – which are enclosed.** The focus of this meeting was to review pieces of the draft risk assessment for the county and review existing action items and determine what changes need to be made. I still need that feedback. In addition, I need the group to report on what action items have been accomplished and what mitigation activities have occurred since the plan was updated five years ago. Mitigation activities do not have to be limited to what is on the action item list. If you are aware of any activities that would qualify as mitigation, we should include that in the plan to show progress. This can include activities such as improvements to roads and bridges that were prone to flooding, new programs that have reduced risk to residents and/or businesses and new tornado shelters that have been constructed in the past five years. If you have data on damages from natural events that have occurred in the last five years, or information on hazard mitigation projects that have been accomplished in the past five years, please send this and any other pertinent data to me at your earliest convenience – certainly no later than March 27<sup>th</sup>.

Other critical issues: If your jurisdiction has not completed and returned the data collection questionnaire, please get that to me no later than March 27<sup>th</sup>. If you need help completing the questionnaire, give me a call. I'll be happy to walk through it with you.

As the county, each city and school district are required to participate in the planning process and will be asked to formally approve and adopt the Phelps County Hazard Mitigation Plan, we strongly encourage you to participate in this committee or to send a representative who will convey your jurisdiction or department's needs for hazard mitigation as well as report on your hazard mitigation accomplishments. It is important to include representatives from road and bridge, local planners, emergency management

offices, law enforcement, city/county officials, fire protection, local health services, disaster relief volunteer services and other appropriate groups.

Thank you for your assistance in addressing hazard mitigation for Phelps County. If you have any questions, contact me at (573) 265-2993, extension 104 or via e-mail: [tsnodgrass@merameregion.org](mailto:tsnodgrass@merameregion.org). I look forward to seeing you at the meeting.

TS

**Phelps County**  
**Multi-Jurisdictional Hazard Mitigation Plan Update**  
**Planning Meeting Via Zoom and Conference Call**

Thursday, June 25, 2020 ~ 1:30 p.m.

Zoom: <https://us02web.zoom.us/j/84031689172?pwd=eGl1NnYxT0xmLzhJODg2VloxMW00dz09>

Call in: 1-(312) 626-6799 ~ Meeting ID: 840 3168 9172 ~ Password: 247537

**AGENDA**

- I. Welcome/Introductions – Tammy Snodgrass, Assistant Director, Meramec Regional Planning Commission
- II. Brief Review
- III. Public Survey Update
- IV. Participation Requirements/Status
- V. Plan Update Format
- VI. Sample Results of Countywide Risk Assessment Update
- VII. Discuss Mitigation Action Updates – *(Which have been accomplished or had progress made; which are no longer high priority; which can be combined or eliminated)*
- VIII. Next Steps
- IX. Set Next Meeting Date(s)

## NOTICE OF PUBLIC MEETING

Date and time of posting: **June 22, 2020 at 11:30 a.m.**

Notice is hereby given that the **Phelps County Hazard Mitigation Planning Committee** will meet at 1:30 p.m. on **Thursday, June 25, 2020** via Zoom and conference call. Instructions for joining the meeting:

Zoom:

<https://us02web.zoom.us/j/84031689172?pwd=eGl1NnYxT0xmLzhJODg2VloxMW00dz09>

Call in: 1-(312) 626-6799 ~ Meeting ID: 840 3168 9172 ~ Password: 247537

The tentative agenda of this meeting includes:

- Welcome and Introductions
- Brief Review
- Public Survey Update
- Participation Requirements
- Plan Update Format
- Sample Results of Countywide Risk Assessment Update
- Discuss Mitigation Action Updates
- Next Steps
- Setting of Date and Time for Next Meeting
- Adjourn

Representatives of the news media may obtain copies of this notice by contacting:

Tamara Snodgrass  
#4 Industrial Drive  
St. James, MO 65559  
(573) 265-2993

[tsnodgrass@meramecregion.org](mailto:tsnodgrass@meramecregion.org)

If you require any accommodations (i.e. qualified interpreter, large print, hearing assistance) in order to attend this meeting, please notify this office at 573-265-2993 no later than 48 hours prior to the scheduled commencement of the meeting.

**Phelps County Hazard Mitigation Plan Review Meeting**  
**June 25, 2020 ~ 1:30 p.m.**

Name	Representing	Email Address	Phone #	Address
✓ Lyle Thomas	St. James			
Lt. Davis MO Hwy Patrol	MHP			
Gary Hicks	Phelps County			
Ron Smith	Rolla			
✓ Chad Davis	RMO			
✓ Wendy Squires	Phelps Health			
Tammy Snodgrass	MRPC			

For immediate release

July 9, 2020

For more information, contact  
Tammy Snodgrass at (573) 265-2993

### **Public input being accepted on Phelps County Hazard Mitigation Plan until July 31**

PHELPS COUNTY—Public input is being accepted until July 31, 2020, on the Phelps County Hazard Mitigation Plan. The public survey is available on Meramec Regional Planning Commission's website at <http://www.meramecregion.org/surveys/>.

The federal government requires all states and local governments to have hazard mitigation plans approved by the Federal Emergency Management Administration (FEMA) that are consistent with the Disaster Mitigation Act of 2000. Approved mitigation plans are required to maintain eligibility for certain types of federal Hazard Mitigation Assistance Grants.

One of the key components of a hazard mitigation plan is public input during the planning process. The planning committee, comprised of representatives from the Phelps County Commission, the incorporated cities, emergency response agencies, utility providers and public school districts, will be evaluating information on the hazards that impact each jurisdiction within Phelps County.

Formed in 1969, MRPC is a voluntary council of governments serving Crawford, Dent, Gasconade, Maries, Osage, Phelps, Pulaski and Washington counties and their respective cities. Gasconade County Presiding Commissioner Larry Miskel serves as chairman of the board. A professional staff of 34 offers technical assistance and services, such as grant preparation and administration, housing assistance, transportation planning, environmental planning, ordinance codification, business loans and other services to member communities.

If you have questions, please contact Tammy Snodgrass at MRPC at 573-265-2993 or by email at [tsnodgrass@meramecregion.org](mailto:tsnodgrass@meramecregion.org).

To keep up with the latest MRPC news and events, visit the MRPC website at [www.meramecregion.org](http://www.meramecregion.org) or on Facebook at [www.facebook.com/meramecregion](https://www.facebook.com/meramecregion).

## Tammy Snodgrass

---

**Subject:** Tammy's Phelps Hazmit Zoom Meeting  
**Location:** <https://us02web.zoom.us/j/86136458108?pwd=QmUyKzhYSTdxTTVwOFpRL0VPajVrUT09>  
**Start:** Tue 10/27/2020 1:00 PM  
**End:** Tue 10/27/2020 3:00 PM  
**Show Time As:** Tentative  
**Recurrence:** (none)  
**Meeting Status:** Not yet responded  
**Organizer:** Tammy Snodgrass  
**Required Attendees:** Brad Woods; Brian Lambeth/St. James Ambulance; 'Butz, John'; Cari Rostine; Chad Davis; City of Newburg; Della Bishop (cityofdoolittle@yahoo.com); Doug Roberts; Dr. Aaron Zalis, Supt.; Dr. Randy Caffey; Eddie Blaylock; Edgar Springs Police; Gary Hicks ; James Poucher; Jim Fleming; John Fluhrer, Supt.; Josh Cahill; Larry Stratman; Louis Magdits; lthomas@stjamesmo.org; Melissa Klott; Merlyn Johnson, Supt.; Michelle Bresnahan; Mike Kirn; Pam.grow@phelpscounty.org; Randy Verkamp; Ron Jones; ron smith; Sarah Wheeler; Steve Davis; Steve Flowers; Supt. Lynne Reed (lynne.reed@salem80.org); Wendy Squires - PCRMC (wsquires@phelpshealth.org); Kathryn Hawes; Tammy Snodgrass  
**zmMeetingNum:** 86136458108

Tammy Snodgrass is inviting you to a scheduled Zoom meeting. PLEASE NOTE – TIME IS 1:00 P.M.

Join Zoom Meeting  
<https://us02web.zoom.us/j/86136458108?pwd=QmUyKzhYSTdxTTVwOFpRL0VPajVrUT09>

Meeting ID: 861 3645 8108  
Passcode: 899804  
One tap mobile  
+13126266799,,86136458108#,,,,,0#,,899804# US (Chicago)  
+19292056099,,86136458108#,,,,,0#,,899804# US (New York)

Dial by your location  
+1 312 626 6799 US (Chicago)  
+1 929 205 6099 US (New York)  
+1 301 715 8592 US (Germantown)  
+1 346 248 7799 US (Houston)  
+1 669 900 6833 US (San Jose)  
+1 253 215 8782 US (Tacoma)  
Meeting ID: 861 3645 8108  
Passcode: 899804  
Find your local number: <https://us02web.zoom.us/j/86136458108?pwd=QmUyKzhYSTdxTTVwOFpRL0VPajVrUT09>

**Phelps County**  
**Multi-Jurisdictional Hazard Mitigation Plan Update**  
**Planning Meeting Via Zoom and Conference Call**

Tuesday, October 27, 2020 ~ 1:00 p.m.

Zoom:

<https://us02web.zoom.us/j/86136458108?pwd=QmUyKzhYSTdxTTVwOFpRL0VPajVrUT09>

Call in: 1-(312) 626-6799 ~ Meeting ID: 861 3645 8108 ~ Password: 899804

**AGENDA**

- I. Welcome/Introductions – Tammy Snodgrass, Assistant Director, Meramec Regional Planning Commission
- II. Brief Review
- III. Public Survey Update
- IV. Participation Requirements/Status
- V. Review and Discussion on Draft Chapters
- VI. Plan Maintenance
- VII. Adoption Process
- VIII. Next Steps
- IX. Adjourn



## NOTICE OF PUBLIC MEETING

Date and time of posting: **October 21, 2020 at 11:30 a.m.**

Notice is hereby given that the **Phelps County Hazard Mitigation Planning Committee** will meet at 1:00 p.m. on **Tuesday, October 27, 2020** via Zoom and conference call. Instructions for joining the meeting:

Zoom:

<https://us02web.zoom.us/j/86136458108?pwd=QmUyKzhYSTdxTTVwOFpRL0VPajVrUT09>

Call in: 1-(312) 626-6799 ~ Meeting ID: 861 3645 8108 ~ Password: 899804

The tentative agenda of this meeting includes:

- Welcome and Introductions
- Brief Review
- Public Survey Update
- Participation Requirements
- Review and Discussion on Draft Chapters
- Plan Maintenance
- Adoption Process
- Next Steps
- Adjourn

Representatives of the news media may obtain copies of this notice by contacting:

Tamara Snodgrass  
#4 Industrial Drive  
St. James, MO 65559  
(573) 265-2993

[tsnodgrass@meramecregion.org](mailto:tsnodgrass@meramecregion.org)

If you require any accommodations (i.e. qualified interpreter, large print, hearing assistance) in order to attend this meeting, please notify this office at 573-265-2993 no later than 48 hours prior to the scheduled commencement of the meeting.

**Phelps County Hazard Mitigation Plan Review Meeting**  
**October 27, 2020 ~ 1:00 p.m.**

Name	Representing	Email Address	Phone #	Address
Lyle Thomas	St James			
Gary Hicks	Phelps Co.			
Wendy Squires	Phelps Health			
Chief Ron Jones	St. James			
Josh Cahill	St. James R-I Schools			
Craig Hounsom	Rolla 31 Schools			
Michelle Bresnahan	MS+T			
Kathryn Hawes	MRPC			
Tammy Snodgrass	MRPC			

Name	Representing	Email Address	Phone #	Address
Merlyn Johnson	St. James R-I Schools			
Eddie Blaylock	MSHP			
Chad Davis	RMU			
Ron Smith	Rolla Fire & Rescue			
Doug Roberts	MS+T Police			

For immediate release  
March 9, 2021

For more information, contact  
Tammy Snodgrass at (573) 265-2993

**Public comment being accepted on Phelps County Hazard Mitigation Plan until March 26**

PHELPS COUNTY—Public comment is being accepted until March 26, 2021, on the Phelps County Hazard Mitigation Plan. The plan update is available for review on Meramec Regional Planning Commission's website, <http://www.meramecregion.org/publications/>. The 2021 plan update is located under the Hazard Mitigation Plans by County along with the county's approved 2016 plan. A hard copy of the plan is also available at the Phelps County Courthouse in the county clerk's office.

The purpose of the plan is to reduce or eliminate long-term risk to people and property from natural hazards. It is required that the county have this plan in place in order to be eligible for several Federal Emergency Management Agency grant programs.

Several entities participated in the planning process to update the plan, including Phelps County, the cities of Doolittle, Edgar Springs, Newburg, Rolla, and St. James, as well as St. James R-I, Newburg R-II, Phelps County R-III, and Rolla 31 School Districts, Sho-Me Power, Missouri S&T, Phelps Health, Edgar Springs Rural Fire Protection District, Missouri State Highway Patrol and SEMA.

The Meramec Regional Planning Commission (MRPC) facilitated focus group meetings and assisted these entities in developing the plan. Following a public comment period, a final draft will be created and sent to FEMA and SEMA for review and approval.

If you need assistance locating the plan or have questions, please contact Tammy Snodgrass at MRPC at 573-265-2993 or by email at [tsnodgrass@meramecregion.org](mailto:tsnodgrass@meramecregion.org).

Formed in 1969, MRPC is a voluntary council of governments serving Crawford, Dent, Gasconade, Maries, Osage, Phelps, Pulaski and Washington counties and their respective cities. Gasconade County Presiding Commissioner Larry Miskel serves as chairman of the board. A professional staff of 34 offers technical assistance and services, such as grant preparation and administration, housing assistance, transportation planning, environmental planning, ordinance codification, business loans and other services to member communities.

To keep up with the latest MRPC news and events, visit the MRPC website at [www.meramecregion.org](http://www.meramecregion.org) or on Facebook at [www.facebook.com/meramecregion/](https://www.facebook.com/meramecregion/).

To keep up with the latest MRPC news and events, visit the MRPC website at [www.meramecregion.org](http://www.meramecregion.org) or on Facebook at [www.facebook.com/meramecregion/](https://www.facebook.com/meramecregion/).

Mailing list for surrounding jurisdictions:

Mayor Debby Green  
City of Gasconade  
493 Oak St.  
Gasconade, MO 65061-3005

Mayor Bruce Cox  
City of Hermann  
1902 Jefferson St.  
Hermann, MO 65041

Mayor Melissa Strobe  
City of Morrison  
632 Hwy. 100  
Morrison, MO 65061-1005

Mayor John Kamler  
City of Owensville  
107 W. Sears  
Owensville, MO 65066

Mayor Shannon Grus  
City of Rosebud  
P.O. Box 199  
Rosebud, MO 63091

Dr. Chuck Garner, Supt.  
Gasconade County R-II  
P.O. Box 536  
Owensville, MO 65066

Mayor Lee Medlock  
City of Bland  
P.O. Box 40  
Bland, MO 65014

Pres. Commissioner Larry Miskel  
Gasconade County Commission  
119 E. First St.  
Hermann, MO 65041

Dr. Kimberly Hawk, Supt.  
Plato R-V  
P.O. Box A  
Plato, MO 65552

Dana Buschmann, Supt.  
Raymondville R-VIII  
P.O. Box 10  
Raymondville, MO 65555

David Russell, Supt.  
Success R-VI  
10341 Highway 17  
Success, MO 65570

Dr. Rick Stark, Supt.  
Summersville R-II  
P.O. Box 198  
Summersville, MO 65571

Mayor Donnie Wells  
City of Cabool  
528 Spruce St  
Cabool, MO 65689

Presiding Com. Scott Long  
Texas County  
210 North Grand Ave, Ste301  
Houston, MO 65483

Mayor Willy Walker  
City of Houston  
601 S Grand Ave  
Houston, MO 65483

Mayor Keith Cantrell  
City of Licking  
P.O. Box 89  
Licking, MO 65542

Mayor Marilyn Howell  
City of Summersville  
195 Rogers Ave  
Summersville, MO 65571

Dr. Scott Smith, Supt.  
Gasconade County R-I  
170 Blue Pride Drive  
Hermann, MO 65041

Dr. Allen Moss, Supt.  
Houston R-I  
423 W Pine  
Houston, MO 65483

Dr. Karl Janson, Supt.  
Cabool R-IV  
725 Main Street  
Cabool, MO 65689

Christina Wright, Supt.  
Licking R-VIII  
125 College Ave  
Licking, MO 65542

Dr. Kyle Gibbs, Supt.  
Crawford Co R-1  
1444 Old Hwy 66  
Bourbon, MO 65441

Jon Earnhart, Supt.  
Crawford Co R-II  
1 Wildcat Pride Dr  
Cuba, MO 65453

Mike Whittaker, Supt.  
Steelville R-III  
P.O. Box 339  
Steelville, MO 65565

Mayor David Lafferty  
City of Bourbon  
P.O. Box 164  
Bourbon, MO 65441

Mayor, Cody Leathers  
City of Cuba  
P.O. Box K  
Cuba, MO 65453

Mayor Terry Beckham  
City of Steelville  
P.O. Box M  
Steelville, MO 65565

Presiding Comm Leo Sanders  
Crawford County  
P.O. Box AS  
Steelville, MO 65565

Pres. Commissioner Gene Newkirk  
Pulaski County Commission  
301 Historic 66 East  
Waynesville, MO 65583

Mayor Glen Smith  
City of Crocker  
P.O. Box 116  
Crocker, MO 65452

Mayor Mike Null  
City of Dixon  
P.O. Box 177  
Dixon, MO 65459

Mayor Dana Tanner  
City of Richland  
P.O. Box 798  
Richland, MO 65556

Mayor Dr. George Lauritson  
City of St. Robert  
194 Eastlawn Ave. #A  
St. Robert, MO 65584

Mayor Jerry Brown  
City of Waynesville  
100 Tremont Center  
Waynesville, MO 65583

Doug Jacobson, Supt.  
Swedeborg R-III  
17507 Hwy T  
Richland, MO 65556

Brian Lee, Supt.  
Richland R-IV  
714 E. Jefferson  
Richland, MO 65556

Michael Mayle, Supt.  
Laquey R-V  
P.O. Box 130  
Laquey, MO 65534

Dr. Brian Henry, Supt.  
Waynesville R-VI  
200 Fleetwood Dr.  
Waynesville, MO 65583

Duane Doyle, Supt.  
Dixon R-I  
106 W. Fourth St.  
Dixon, MO 65459

Gary Doerhoff, Supt.  
Crocker R-II  
P.O. Box 488  
Crocker, MO 65452

Dr. Lenice Basham, Supt.  
Maries County R-II  
P.O. Box 819  
Belle, MO 65013

Mark Parker, Supt.  
Maries County R-I  
P.O. Box 218  
Vienna, MO 65582

Mayor T.C. James  
City of Vienna  
P.O. Box 196  
Vienna, MO 65582

Mayor Steve Vogt  
City of Belle  
P.O. Drawer 813  
Belle, MO 65013

Presiding Com. Vic Stratman  
Maries County Courthouse  
P.O. Box 205  
Vienna, MO 65582

Presiding Com. Darrell Skiles  
Dent County Courthouse  
400 N. Main  
Salem, MO 65560

Mayor Brad Nash  
City of Salem  
400 N. Iron St.  
Salem, MO 65560

Luann Jadwin  
Oak Hill R-I  
6200 S. Hwy 19  
Salem, MO 65560

Kevin Prugh  
Green Forest R-II  
6111 Hwy F  
Salem, MO 65560

Mrs. Brooker  
Dent-Phelps R-III  
27870 Hwy C  
Salem, MO 65560

Jeff Dodson  
Northwoods R-IV  
3734 N. Hwy 19  
Salem, MO 65560

Lynn Reed  
Salem R-80  
1409 W. Rolla Rd.  
Salem, MO 65560

Melissa Nash  
Bunker R-III  
P.O. Box 365  
Bunker, MO 63629

Meramec Regional Planning Commission  
#4 Industrial Drive  
St. James, MO 65559

Phelps County  
Hazard  
Mitigation Plan is  
Ready for Review!

Meramec Regional Planning Commission  
#4 Industrial Drive  
St. James, MO 65559

Phelps County  
Hazard  
Mitigation Plan is  
Ready for Review!

3/2/21

**Attention Members of the Pulaski County Hazard Mitigation Planning Committee and neighboring jurisdictions:**

The first draft of the Phelps County Hazard Mitigation Plan is now available for review on the MRPC website – <http://www.meramecregion.org/publications/>. A hard copy of the draft document is being mailed to the Phelps County Courthouse for public viewing as well. Please take some time to review the planning document, especially sections that have specifics regarding your jurisdiction. We have submitted a draft to SEMA for review, but they are allowing us some time for public input. Please notify us no later than **March 26, 2021** with any recommended changes or corrections. Contact Tammy Snodgrass at (573) 265-2993 or via email at [tsnodgrass@meramecregion.org](mailto:tsnodgrass@meramecregion.org).

3/2/21

**Attention Members of the Pulaski County Hazard Mitigation Planning Committee and neighboring jurisdictions:**

The first draft of the Phelps County Hazard Mitigation Plan is now available for review on the MRPC website – <http://www.meramecregion.org/publications/>. A hard copy of the draft document is being mailed to the Phelps County Courthouse for public viewing as well. Please take some time to review the planning document, especially sections that have specifics regarding your jurisdiction. We have submitted a draft to SEMA for review, but they are allowing us some time for public input. Please notify us no later than **March 26, 2021** with any recommended changes or corrections. Contact Tammy Snodgrass at (573) 265-2993 or via email at [tsnodgrass@meramecregion.org](mailto:tsnodgrass@meramecregion.org).



## C: Public Survey

---

### Public Survey: Phelps County Multi-jurisdictional Hazard Mitigation Plan

The federal government requires all states and local governments to have hazard mitigation plans approved by FEMA that are consistent with the Disaster Mitigation Act of 2000. Approved mitigation plans are required to maintain eligibility for certain types of federal Hazard Mitigation Assistance Grants.

A planning committee comprised of representatives from Phelps County, the incorporated cities, and the public school districts is currently developing an update to the comprehensive Phelps County Multi-jurisdictional Hazard Mitigation Plan with a strategy to reduce the vulnerability of people and property in the planning area to the impacts of hazards and to remain eligible for mitigation funding programs from FEMA.

One of the key components of a hazard mitigation plan is public input during the planning process. The planning committee will be evaluating information on the hazards that impact each jurisdiction within Phelps County. The committee is seeking your input on the hazards that will be evaluated as well as your opinions on the types of activities that should be considered to reduce future impacts. Your comments will be considered by your community's representatives on the planning committee as the plan is developed. Please take a few moments to answer the following questions. Thank you for your participation.

1. Please select your jurisdiction from the list. You may only select one jurisdiction for each survey completed. If you belong to more than one jurisdiction in this list, please complete multiple surveys.

- |  |  |
|--|--|
| <input type="checkbox"/> Unincorporated Phelps County  | <input type="checkbox"/> City of St. James                   |
| <input type="checkbox"/> City of Doolittle             | <input type="checkbox"/> St. James R-I School District       |
| <input type="checkbox"/> City of City of Edgar Springs | <input type="checkbox"/> Newburg R-II School District        |
| <input type="checkbox"/> City of Newburg               | <input type="checkbox"/> Phelps County R-III School District |
| <input type="checkbox"/> City of Rolla                 | <input type="checkbox"/> Rolla 31 School District            |

2. The hazards addressed in the Multi-jurisdictional Hazard Mitigation Plan Update are listed below. Please indicate your opinion on the likelihood for each hazard to impact YOUR JURISDICTION (identified above). **Please rate EACH hazard 1 through 4 as follows:**

**1 = Unlikely, 2 = Occasional, 3 = Likely, 4 = Highly Likely**

<input type="checkbox"/> Flooding (Flash and River)	<input type="checkbox"/> Earthquake	<input type="checkbox"/> Severe Thunderstorms
<input type="checkbox"/> Tornadoes	<input type="checkbox"/> Land Subsidence / Sinkholes	<input type="checkbox"/> Severe Winter Weather
<input type="checkbox"/> Dam Failure	<input type="checkbox"/> Drought	
<input type="checkbox"/> Wildfire	<input type="checkbox"/> Extreme Temperatures	

3. Please indicate your opinion on the potential magnitude of each hazard's impact on YOUR JURISDICTION (identified above). **Please rate EACH hazard 1 through 4 as follows:**

**1 = Negligible, 2 = Limited, 3 = Critical, 4 = Catastrophic**

<input type="checkbox"/> Flooding (Flash and River)	<input type="checkbox"/> Earthquake	<input type="checkbox"/> Severe Thunderstorms
<input type="checkbox"/> Tornadoes	<input type="checkbox"/> Land Subsidence / Sinkholes	<input type="checkbox"/> Severe Winter Weather
<input type="checkbox"/> Dam Failure	<input type="checkbox"/> Drought	
<input type="checkbox"/> Wildfire	<input type="checkbox"/> Extreme Temperatures	

4. FEMA Hazard Mitigation Assistance Grants are administered by the State Emergency Management Agency. Listed below are some types of projects considered.

**Please check all those that could benefit your jurisdiction, in your opinion:**

- |  |   |
|--|---|
| <input type="checkbox"/> Flood-prone Property Acquisition & Structure Demolition /Relocation                                   | <input type="checkbox"/> Retrofitting of Existing Buildings, and Facilities from Wind Damage. |
| <input type="checkbox"/> Flood-Prone Structure Elevation   | <input type="checkbox"/> New Tornado Safe Room Construction                                   |
| <input type="checkbox"/> Dry Floodproofing of Historical Residential Structures and/or Non-residential Structures              | <input type="checkbox"/> Electrical Utilities Infrastructure Retrofit                         |
| <input type="checkbox"/> Minor Localized Flood Reduction Projects (storm water management or localized flood control projects) | <input type="checkbox"/> Soil Erosion Stabilization   |
| <input type="checkbox"/> Structural Retrofitting of Existing Buildings to Add a Tornado Safe Room                              | <input type="checkbox"/> Wildfire Mitigation  |
| <input type="checkbox"/> Storm Sirens  | <input type="checkbox"/> Other (please specify)   |
| <input type="checkbox"/> Early Warning Systems such as phone/text alerts   |   |

5. Please comment on any other issues that the Phelps County Hazard Mitigation Planning Committee should consider in developing a strategy to reduce future losses caused by hazard events.

---

---

---

**Please return your completed survey to:**

Tamara Snodgrass

Meramec Regional Planning Commission

4 Industrial Drive ~ St. James, MO 65559

Phone: 573-265-2993, ext. 104 ~ FAX: 573-265-3550

[tsnodgrass@meramecregion.org](mailto:tsnodgrass@meramecregion.org)

On-line surveys will be automatically sent.

## Phelps County Public Survey Results

Number of responses: 14

Responses came from following jurisdictions:

- City of St. James - 1

Hazards rated from Unlikely (1) to Highly Likely (4) to occur:

Flooding (flash and riverine)      average score: 2.07

Tornadoes      average score: 2.92

Dam Failure      average score: 1.14

Wildfire      average score: 2.28

Earthquake      average score: 1.64

Land Subsident/Sinkholes      average score: 1.92

Drought      average score: 2.35

Extreme Temperatures      average score: 2.92

Severe Thunderstorms      average score: 3.42

Severe Winter Weather      average score: 3.14

Hazard rated from Negligible (1) to Catastrophic (4):

Flooding (flash and riverine)      average score: 1.85

Tornadoes      average score: 3.00

Dam Failure      average score: 1.21

Wildfire      average score: 2.21

Earthquake      average score: 2.21

Land Subsident/Sinkholes      average score: 1.78

Drought      average score: 2.14

Extreme Temperatures    average score: 2.78

Severe Thunderstorms    average score: 2.85

Severe Winter Weather    average score: 2.92

Check all those types of projects that you believe could benefit your jurisdiction:

Flood-prone Property Acquisition & Structure Demolition /Relocation    6

Flood-Prone Structure Elevation    2

Dry Floodproofing of Historical Residential Structures and/or Non-residential Structures    0

Minor Localized Flood Reduction Projects (storm water management or localized flood control projects)    9

Structural Retrofitting of Existing Buildings to Add a Tornado Safe Room    9

Storm Sirens    9

Early Warning Systems such as phone/text alerts    9

Retrofitting of Existing Buildings, and Facilities from Wind Damage.    3

New Tornado Safe Room Construction    8

Electrical Utilities Infrastructure Retrofit    8

Soil Erosion Stabilization    4

Wildfire Mitigation    2

Other (please specify)    0

Comments: See Below

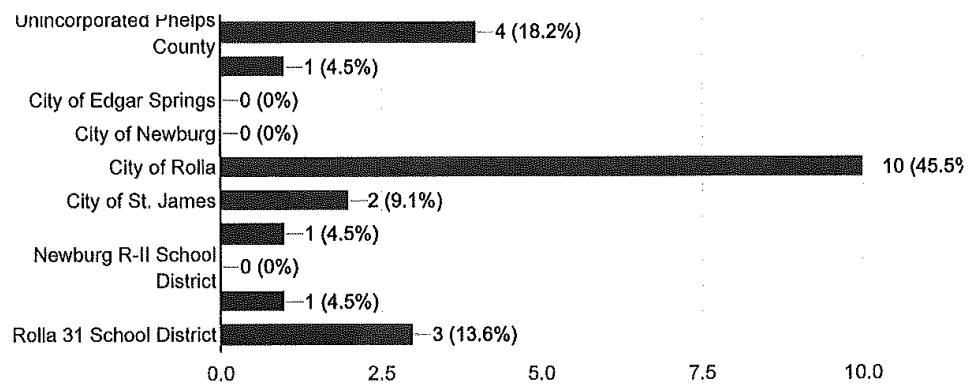
# Public Survey: Phelps County Multi-jurisdictional Hazard Mitigation Plan

22 responses

[Publish analytics](#)

Please select your jurisdiction from the list. You may only select one jurisdiction for each survey completed. If you belong to more than one jurisdiction in this list, please complete multiple surveys.

22 responses

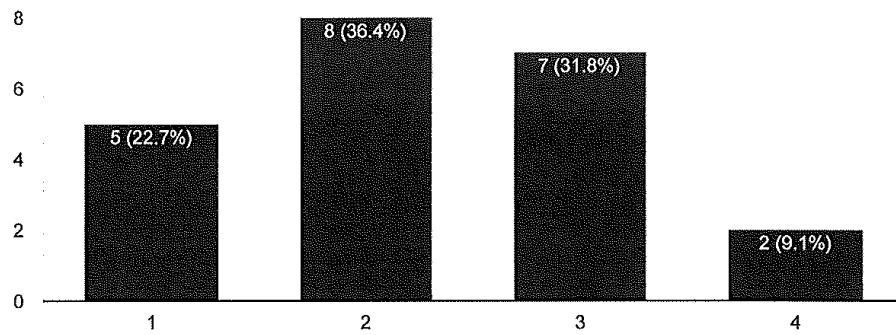


The hazards addressed in the Multi-jurisdictional Hazard Mitigation Plan Update are listed below. Please indicate your opinion on the likelihood for each hazard to impact YOUR JURISDICTION (identified above). Please rate EACH hazard 1 through 4 as follows: 1 = Unlikely, 2 = Occasional, 3 = Likely, 4 = Highly Likely



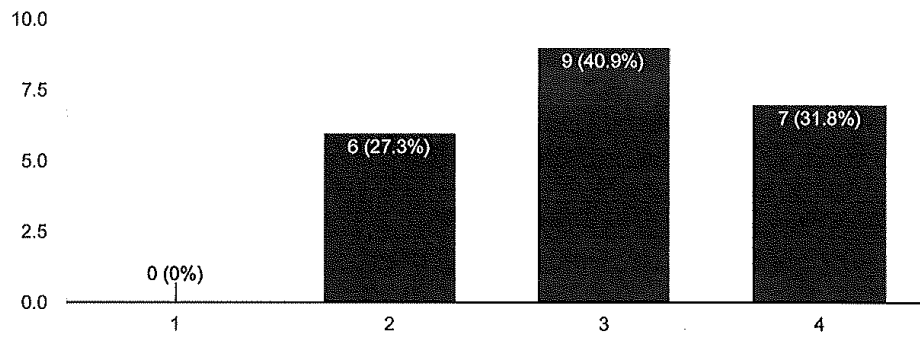
### Flooding (Flash and River)

22 responses



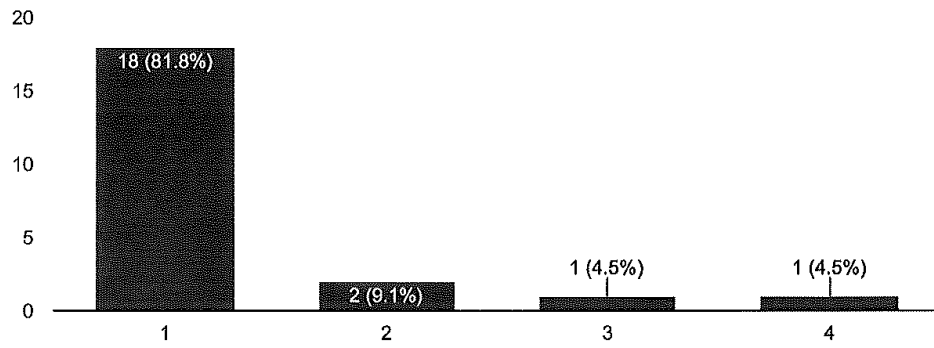
### Tornadoes

22 responses



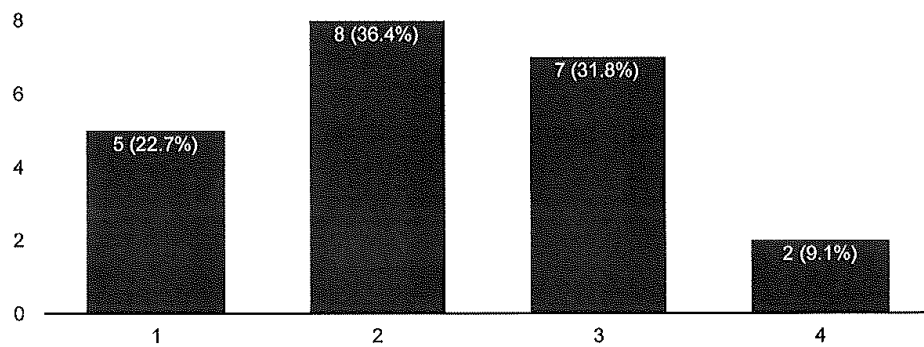
### Dam Failure

22 responses



### Wildfire

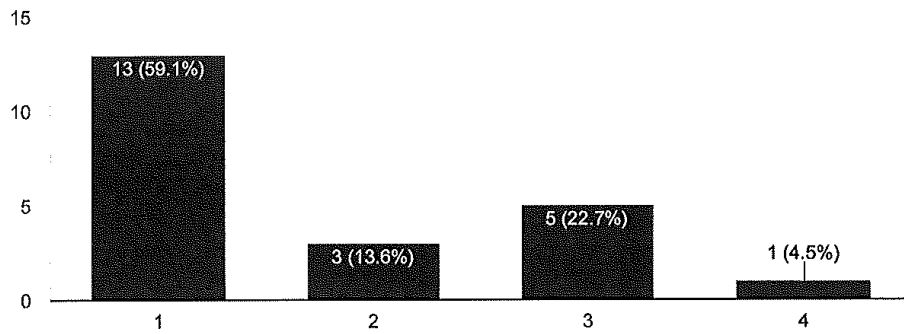
22 responses





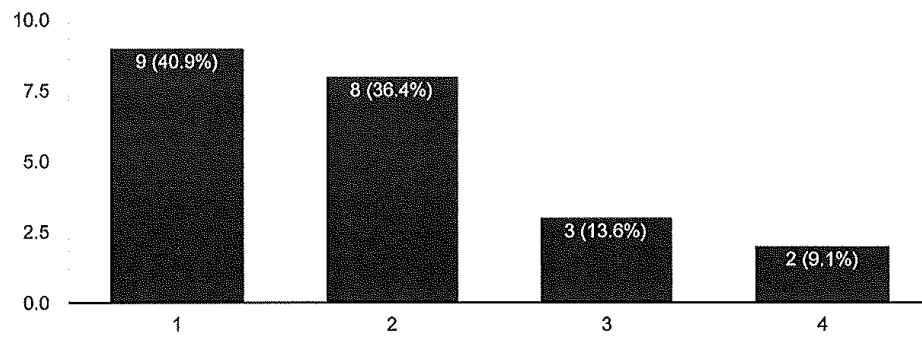
### Earthquake

22 responses



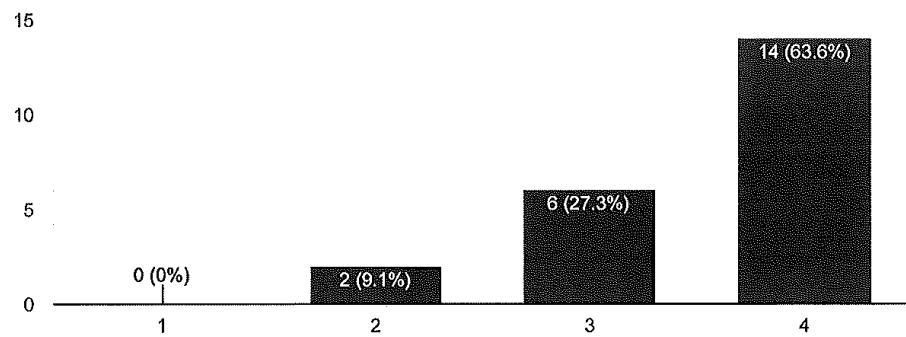
### Land Subsidence/ Sinkholes

22 responses



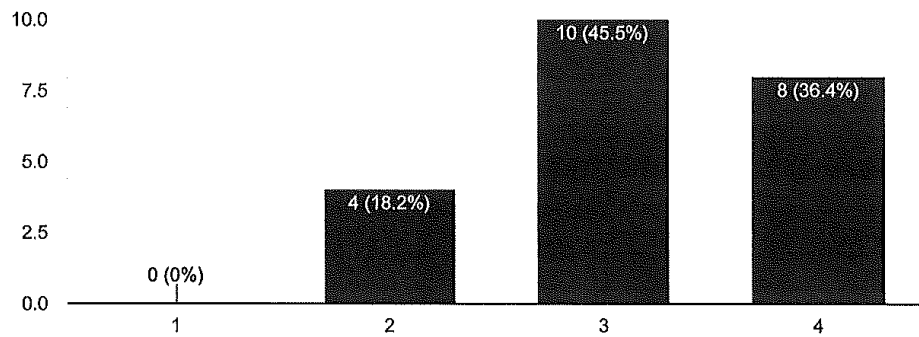
### Severe Thunderstorms

22 responses



### Severe Winter Weather

22 responses

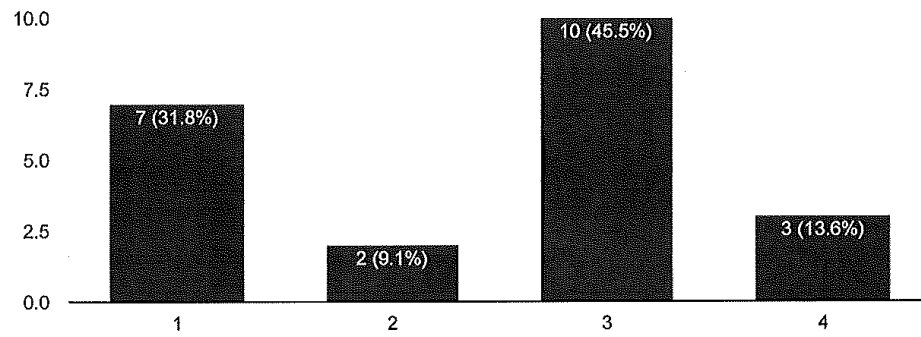


Please indicate your opinion on the potential magnitude of each hazard's impact on YOUR JURISDICTION (identified above). Please rate EACH hazard 1 through 4 as follows: 1 = Negligible, 2 = Limited, 3 = Critical, 4 = Catastrophic



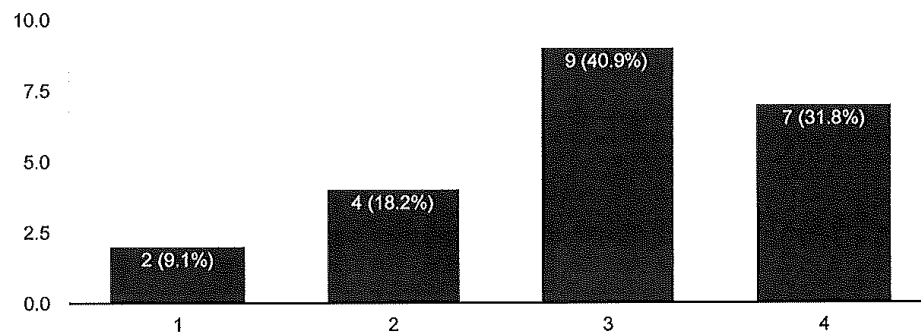
### Drought

22 responses



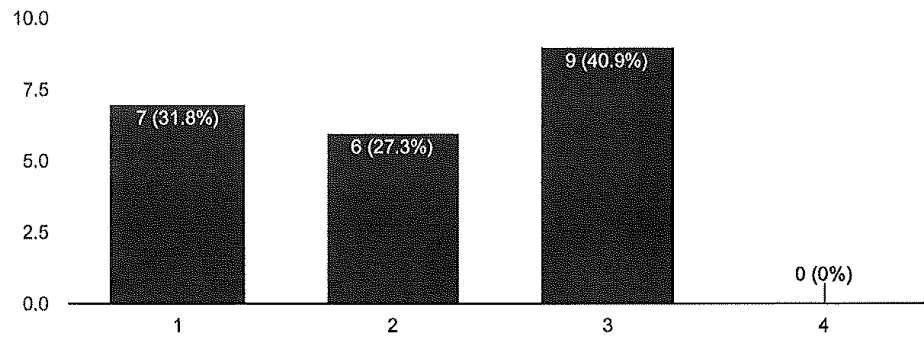
### Extreme Temperatures

22 responses



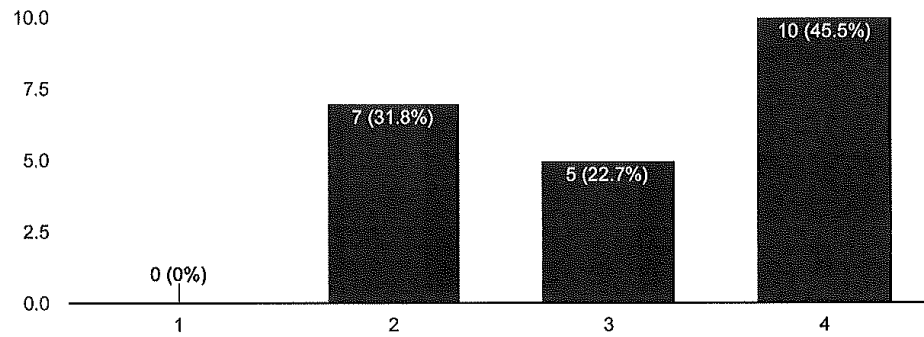
### Flooding (Flash and River)

22 responses



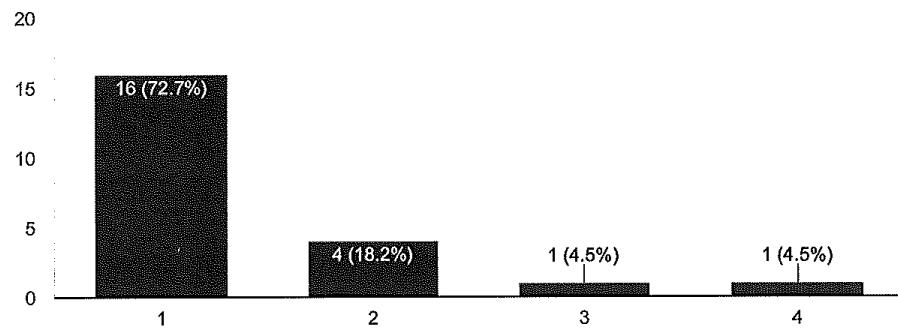
### Tornadoes

22 responses



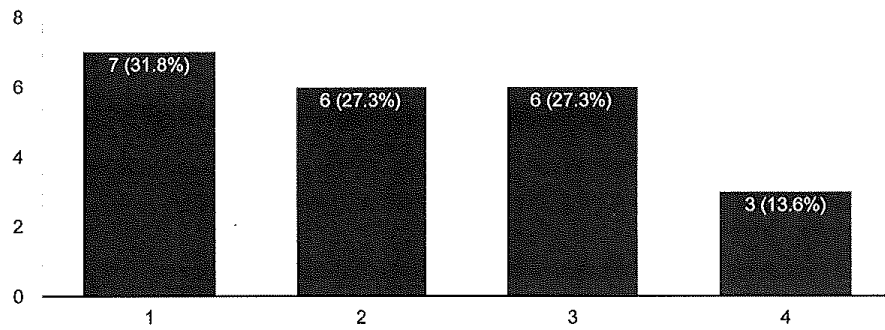
### Dam Failure

22 responses



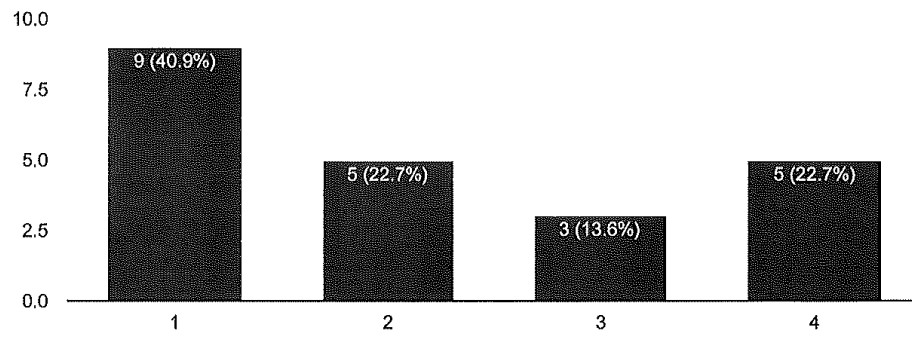
### Wildfire

22 responses



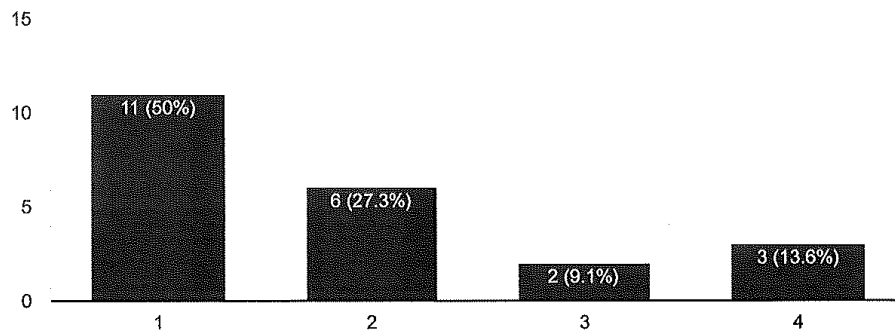
### Earthquake

22 responses



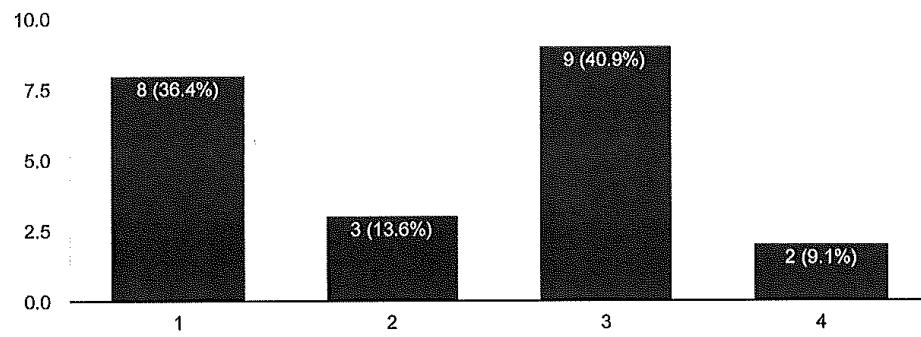
### Land Subsidence/Sinkholes

22 responses



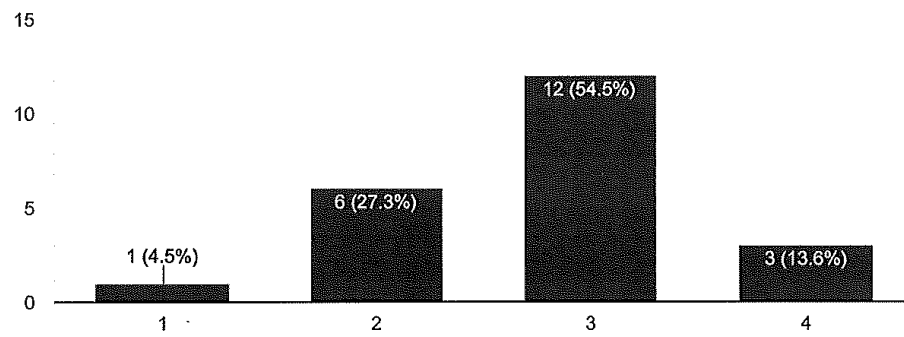
### Drought

22 responses



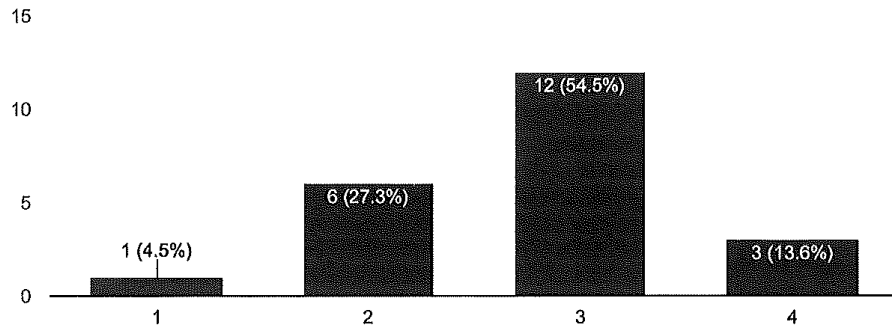
### Extreme Temperatures

22 responses



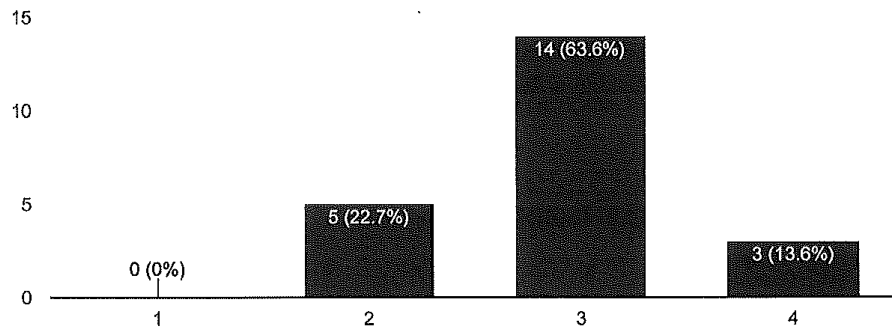
### Severe Thunderstorms

22 responses



### Severe Winter Weather

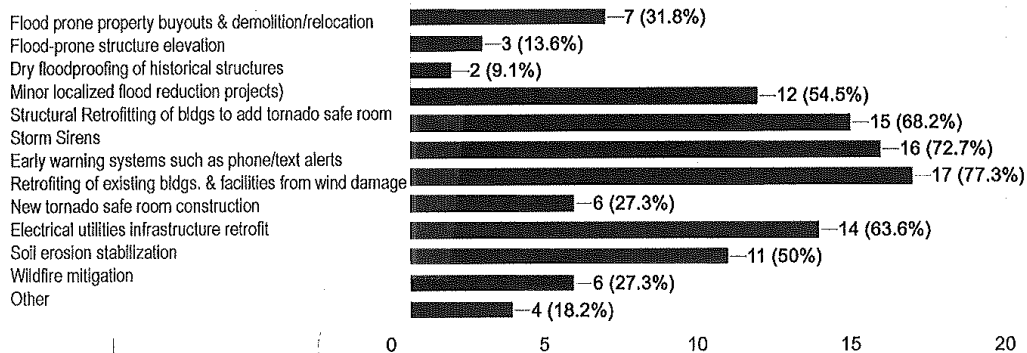
22 responses





FEMA Hazard Mitigation Assistance Grants are administered by the State Emergency Management Agency. Listed below are some types of projects considered. Please check all those that could benefit your jurisdiction, in your opinion:

22 responses



Please comment on any other issues that the Phelps County Hazard Mitigation Planning Committee should consider in developing a strategy to reduce future losses caused by hazard events.

1 response

There needs to be a storm shelter in Richland MO!

For questions or more information:

This content is neither created nor endorsed by Google. [Report Abuse](#) - [Terms of Service](#) - [Privacy Policy](#)

Google Forms



## D: Adoption Resolutions

---

RESOLUTION NO. 2021-3-9 (1)

**A RESOLUTION TO ADOPT THE PHELPS COUNTY  
MULTI-JURISDICTION NATURAL HAZARDS MITIGATION PLAN**

**WHEREAS**, Phelps County recognizes the threat that natural hazards pose to people and property within our community; and

**WHEREAS**, undertaking hazard mitigation actions will reduce the potential for harm to people and property from future hazard occurrences; and

**WHEREAS**, the U.S. Congress passed the Disaster Mitigation Act of 2000 emphasizing the need for pre-disaster mitigation of potential hazards and made available hazard mitigation grants to state and local governments; and

**WHEREAS**, an adopted Multi-Jurisdiction Natural Hazards Mitigation Plan is required as a condition of future funding for mitigation projects under multiple FEMA pre-and post-disaster mitigation grant programs; and

**WHEREAS**, Phelps County Commission fully participated in the FEMA prescribed mitigation planning process to prepare this Mitigation Plan; and

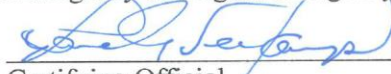
**WHEREAS**, the Missouri State Emergency Management Agency and Federal Emergency Management Agency officials have reviewed the Phelps County Multi-Jurisdictional Natural Hazards Mitigation Plan and approved it contingent upon this official adoption of the participating governing body; and

**WHEREAS**, Phelps County Commission desires to comply with the requirements of the Disaster Mitigation Act and to augment its emergency planning efforts by formally adopting the Phelps County Multi-Jurisdiction Natural Hazards Mitigation Plan; and

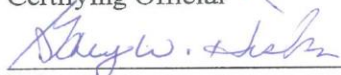
**WHEREAS**, adoption by the governing body of Phelps County demonstrates the jurisdiction's commitment to fulfilling the mitigation goals and objectives outlined in this Mitigation Plan; and

**WHEREAS**, adoption of this legitimizes the plan and authorizes responsible agencies to carry out their responsibilities under the plan;

**NOW, THEREFORE BE IT RESOLVED**, that Phelps County Commission adopts the Phelps County Multi-Jurisdictional Natural Hazards Mitigation Plan as an official plan and will submit this Adoption Resolution to the Missouri Emergency Management Agency and the Federal Emergency Management Agency officials to enable the plan's final approval.

  
\_\_\_\_\_  
Certifying Official

March 9, 2021  
\_\_\_\_\_  
Date

  
\_\_\_\_\_  
Witness

March 18, 2021  
\_\_\_\_\_  
Date

**RESOLUTION NO. 2021 - 1**  
**A RESOLUTION TO ADOPT THE PHELPS COUNTY**  
**MULTI-JURISDICTION NATURAL HAZARDS MITIGATION PLAN**

**WHEREAS**, the City of Doolittle recognizes the threat that natural hazards pose to people and property within our community; and

**WHEREAS**, undertaking hazard mitigation actions will reduce the potential for harm to people and property from future hazard occurrences; and

**WHEREAS**, the U.S. Congress passed the Disaster Mitigation Act of 2000 emphasizing the need for pre-disaster mitigation of potential hazards and made available hazard mitigation grants to state and local governments; and

**WHEREAS**, an adopted Multi-Jurisdiction Natural Hazards Mitigation Plan is required as a condition of future funding for mitigation projects under multiple FEMA pre-and post-disaster mitigation grant programs; and

**WHEREAS**, the City of Doolittle fully participated in the FEMA prescribed mitigation planning process to prepare this Mitigation Plan; and


**WHEREAS**, the Missouri State Emergency Management Agency and Federal Emergency Management Agency officials have reviewed the Phelps County Multi-Jurisdictional Natural Hazards Mitigation Plan and approved it contingent upon this official adoption of the participating governing body; and

**WHEREAS**, the City of Doolittle desires to comply with the requirements of the Disaster Mitigation Act and to augment its emergency planning efforts by formally adopting the Phelps County Multi-Jurisdiction Natural Hazards Mitigation Plan; and

**WHEREAS**, adoption by the governing body of the City of Doolittle demonstrates the jurisdiction's commitment to fulfilling the mitigation goals and objectives outlined in this Mitigation Plan; and

**WHEREAS**, adoption of this legitimizes the plan and authorizes responsible agencies to carry out their responsibilities under the plan;

**NOW, THEREFORE BE IT RESOLVED**, that the City of Doolittle adopts the Phelps County Multi-Jurisdictional Natural Hazards Mitigation Plan as an official plan and will submit this Adoption Resolution to the Missouri Emergency Management Agency and the Federal Emergency Management Agency officials to enable the plan's final approval.

  
\_\_\_\_\_  
Doug Smith, Mayor,                      Certifying Official

3-16-21  
\_\_\_\_\_  
Date

  
\_\_\_\_\_  
Della Bishop-Baggett, Clerk                      Witness

3-16-21  
\_\_\_\_\_  
Date

MAR 12 2021

RESOLUTION NO. 276

**A RESOLUTION TO ADOPT THE PHELPS COUNTY  
MULTI-JURISDICTION NATURAL HAZARDS MITIGATION PLAN**

**WHEREAS**, the City of Newburg recognizes the threat that natural hazards pose to people and property within our community; and

**WHEREAS**, undertaking hazard mitigation actions will reduce the potential for harm to people and property from future hazard occurrences; and

**WHEREAS**, the U.S. Congress passed the Disaster Mitigation Act of 2000 emphasizing the need for pre-disaster mitigation of potential hazards and made available hazard mitigation grants to state and local governments; and

**WHEREAS**, an adopted Multi-Jurisdiction Natural Hazards Mitigation Plan is required as a condition of future funding for mitigation projects under multiple FEMA pre-and post-disaster mitigation grant programs; and

**WHEREAS**, the City of Newburg fully participated in the FEMA prescribed mitigation planning process to prepare this Mitigation Plan; and

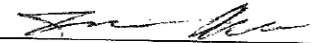
**WHEREAS**, the Missouri State Emergency Management Agency and Federal Emergency Management Agency officials have reviewed the Phelps County Multi-Jurisdictional Natural Hazards Mitigation Plan and approved it contingent upon this official adoption of the participating governing body; and

**WHEREAS**, the City of Newburg desires to comply with the requirements of the Disaster Mitigation Act and to augment its emergency planning efforts by formally adopting the Phelps County Multi-Jurisdiction Natural Hazards Mitigation Plan; and

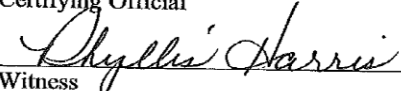
**WHEREAS**, adoption by the governing body of the City of Newburg demonstrates the jurisdiction's commitment to fulfilling the mitigation goals and objectives outlined in this Mitigation Plan; and

**WHEREAS**, adoption of this legitimizes the plan and authorizes responsible agencies to carry out their responsibilities under the plan;

**NOW, THEREFORE BE IT RESOLVED**, that the City of Newburg adopts the Phelps County Multi-Jurisdictional Natural Hazards Mitigation Plan as an official plan and will submit this Adoption Resolution to the Missouri Emergency Management Agency and the Federal Emergency Management Agency officials to enable the plan's final approval.

  
Certifying Official

3-10-21  
Date

  
Witness

3-10-21  
Date

RESOLUTION NO. 1986

A RESOLUTION ADOPTING THE PHELPS COUNTY MULTI-JURISDICTION NATURAL HAZARDS MITIGATION PLAN

WHEREAS, the City of Rolla recognizes the threat that natural hazards pose to people and property within our community; and

WHEREAS, undertaking hazard mitigation actions will reduce the potential for harm to people and property from future hazard occurrences; and

WHEREAS, the U.S. Congress passed the Disaster Mitigation Act of 2000 emphasizing the need for pre-disaster mitigation of potential hazards and made available hazard mitigation grants to state and local governments; and

WHEREAS, an adopted Multi-Jurisdiction Natural Hazards Mitigation Plan is required as a condition of future funding for mitigation projects under multiple FEMA pre-and post-disaster mitigation grant programs; and

WHEREAS, the City of Rolla fully participated in the FEMA prescribed mitigation planning process to prepare this Mitigation Plan; and

WHEREAS, the Missouri State Emergency Management Agency and Federal Emergency Management Agency officials have reviewed the Phelps County Multi-Jurisdictional Natural Hazards Mitigation Plan and approved it contingent upon this official adoption of the participating governing body; and

WHEREAS, the City of Rolla desires to comply with the requirements of the Disaster Mitigation Act and to augment its emergency planning efforts by formally adopting the Phelps County Multi-Jurisdiction Natural Hazards Mitigation Plan; and

WHEREAS, adoption by the governing body of the City of Rolla demonstrates the jurisdiction's commitment to fulfilling the mitigation goals and objectives outlined in this Mitigation Plan; and


WHEREAS, adoption of this legitimizes the plan and authorizes responsible agencies to carry out their responsibilities under the plan;

NOW, THEREFORE BE IT RESOLVED, that the City Council of the City of Rolla adopts the Phelps County Multi-Jurisdictional Natural Hazards Mitigation Plan as an official plan and will submit this Adoption Resolution to the Missouri Emergency Management Agency and the Federal Emergency Management Agency officials to enable the plan's final approval.


PASSED BY THE CITY COUNCIL OF THE CITY OF ROLLA, MISSOURI AND APPROVED BY THE MAYOR THIS 15<sup>TH</sup> DAY OF MARCH 2021.

APPROVED:  
  
Mayor

ATTEST:

  
City Clerk

APPROVED AS TO FORM:

  
City Counselor



RESOLUTION NO. 21-314

**A RESOLUTION TO ADOPT THE PHELPS COUNTY  
MULTI-JURISDICTION NATURAL HAZARDS MITIGATION PLAN**

**WHEREAS**, the City of St. James recognizes the threat that natural hazards pose to people and property within our community; and

**WHEREAS**, undertaking hazard mitigation actions will reduce the potential for harm to people and property from future hazard occurrences; and

**WHEREAS**, the U.S. Congress passed the Disaster Mitigation Act of 2000 emphasizing the need for pre-disaster mitigation of potential hazards and made available hazard mitigation grants to state and local governments; and

**WHEREAS**, an adopted Multi-Jurisdiction Natural Hazards Mitigation Plan is required as a condition of future funding for mitigation projects under multiple FEMA pre-and post-disaster mitigation grant programs; and

**WHEREAS**, the City of St. James fully participated in the FEMA prescribed mitigation planning process to prepare this Mitigation Plan; and

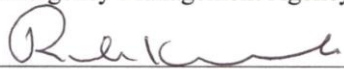
**WHEREAS**, the Missouri State Emergency Management Agency and Federal Emergency Management Agency officials have reviewed the Phelps County Multi-Jurisdictional Natural Hazards Mitigation Plan and approved it contingent upon this official adoption of the participating governing body; and

**WHEREAS**, the City of St. James desires to comply with the requirements of the Disaster Mitigation Act and to augment its emergency planning efforts by formally adopting the Phelps County Multi-Jurisdiction Natural Hazards Mitigation Plan; and

**WHEREAS**, adoption by the governing body of the City of St. James demonstrates the jurisdiction's commitment to fulfilling the mitigation goals and objectives outlined in this Mitigation Plan; and

**WHEREAS**, adoption of this legitimizes the plan and authorizes responsible agencies to carry out their responsibilities under the plan;

**NOW, THEREFORE BE IT RESOLVED**, that the City of St. James adopts the Phelps County Multi-Jurisdictional Natural Hazards Mitigation Plan as an official plan and will submit this Adoption Resolution to the Missouri Emergency Management Agency and the Federal Emergency Management Agency officials to enable the plan's final approval.

  
\_\_\_\_\_  
Certifying Official

3-18-2021  
\_\_\_\_\_  
Date

  
\_\_\_\_\_  
Witness

3-18-2021  
\_\_\_\_\_  
Date

RESOLUTION NO. \_\_\_\_\_

**A RESOLUTION TO ADOPT THE PHELPS COUNTY  
MULTI-JURISDICTION NATURAL HAZARDS MITIGATION PLAN**

**WHEREAS**, St. James R-I School District recognizes the threat that natural hazards pose to people and property within our community; and

**WHEREAS**, undertaking hazard mitigation actions will reduce the potential for harm to people and property from future hazard occurrences; and

**WHEREAS**, the U.S. Congress passed the Disaster Mitigation Act of 2000 emphasizing the need for pre-disaster mitigation of potential hazards and made available hazard mitigation grants to state and local governments; and

**WHEREAS**, an adopted Multi-Jurisdiction Natural Hazards Mitigation Plan is required as a condition of future funding for mitigation projects under multiple FEMA pre-and post-disaster mitigation grant programs; and

**WHEREAS**, St. James R-I School District fully participated in the FEMA prescribed mitigation planning process to prepare this Mitigation Plan; and

**WHEREAS**, the Missouri State Emergency Management Agency and Federal Emergency Management Agency officials have reviewed the Phelps County Multi-Jurisdictional Natural Hazards Mitigation Plan and approved it contingent upon this official adoption of the participating governing body; and

**WHEREAS**, St. James R-I School District desires to comply with the requirements of the Disaster Mitigation Act and to augment its emergency planning efforts by formally adopting the Phelps County Multi-Jurisdiction Natural Hazards Mitigation Plan; and

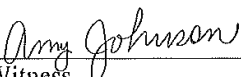
**WHEREAS**, adoption by the governing body of St. James R-I School District demonstrates the jurisdiction's commitment to fulfilling the mitigation goals and objectives outlined in this Mitigation Plan; and

**WHEREAS**, adoption of this legitimizes the plan and authorizes responsible agencies to carry out their responsibilities under the plan;

**NOW, THEREFORE BE IT RESOLVED**, that St. James R-I School District adopts the Phelps County Multi-Jurisdictional Natural Hazards Mitigation Plan as an official plan and will submit this Adoption Resolution to the Missouri Emergency Management Agency and the Federal Emergency Management Agency officials to enable the plan's final approval.

  
\_\_\_\_\_  
Certifying Official

3/24/21  
\_\_\_\_\_  
Date

  
\_\_\_\_\_  
Witness

3/24/21  
\_\_\_\_\_  
Date

RESOLUTION NO. \_\_\_\_\_

**A RESOLUTION TO ADOPT THE PHELPS COUNTY  
MULTI-JURISDICTION NATURAL HAZARDS MITIGATION PLAN**

**WHEREAS**, Newburg R-II School District recognizes the threat that natural hazards pose to people and property within our community; and

**WHEREAS**, undertaking hazard mitigation actions will reduce the potential for harm to people and property from future hazard occurrences; and

**WHEREAS**, the U.S. Congress passed the Disaster Mitigation Act of 2000 emphasizing the need for pre-disaster mitigation of potential hazards and made available hazard mitigation grants to state and local governments; and

**WHEREAS**, an adopted Multi-Jurisdiction Natural Hazards Mitigation Plan is required as a condition of future funding for mitigation projects under multiple FEMA pre-and post-disaster mitigation grant programs; and

**WHEREAS**, Newburg R-II School District fully participated in the FEMA prescribed mitigation planning process to prepare this Mitigation Plan; and

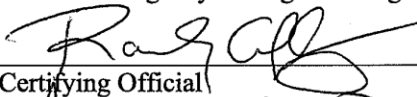
**WHEREAS**, the Missouri State Emergency Management Agency and Federal Emergency Management Agency officials have reviewed the Phelps County Multi-Jurisdictional Natural Hazards Mitigation Plan and approved it contingent upon this official adoption of the participating governing body; and

**WHEREAS**, Newburg R-II School District desires to comply with the requirements of the Disaster Mitigation Act and to augment its emergency planning efforts by formally adopting the Phelps County Multi-Jurisdiction Natural Hazards Mitigation Plan; and

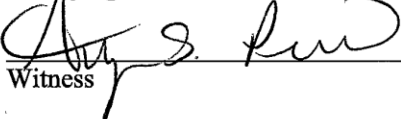
**WHEREAS**, adoption by the governing body of Newburg R-II School District demonstrates the jurisdiction's commitment to fulfilling the mitigation goals and objectives outlined in this Mitigation Plan; and

**WHEREAS**, adoption of this legitimizes the plan and authorizes responsible agencies to carry out their responsibilities under the plan;

**NOW, THEREFORE BE IT RESOLVED**, that Newburg R-II School District adopts the Phelps County Multi-Jurisdictional Natural Hazards Mitigation Plan as an official plan and will submit this Adoption Resolution to the Missouri Emergency Management Agency and the Federal Emergency Management Agency officials to enable the plan's final approval.

  
\_\_\_\_\_  
Certifying Official

03/04/2021  
\_\_\_\_\_  
Date

  
\_\_\_\_\_  
Witness

03/04/2021  
\_\_\_\_\_  
Date



RESOLUTION NO. \_\_\_\_\_

**A RESOLUTION TO ADOPT THE PHELPS COUNTY  
MULTI-JURISDICTION NATURAL HAZARDS MITIGATION PLAN**

**WHEREAS**, Phelps County R-III School District recognizes the threat that natural hazards pose to people and property within our community; and

**WHEREAS**, undertaking hazard mitigation actions will reduce the potential for harm to people and property from future hazard occurrences; and

**WHEREAS**, the U.S. Congress passed the Disaster Mitigation Act of 2000 emphasizing the need for pre-disaster mitigation of potential hazards and made available hazard mitigation grants to state and local governments; and

**WHEREAS**, an adopted Multi-Jurisdiction Natural Hazards Mitigation Plan is required as a condition of future funding for mitigation projects under multiple FEMA pre-and post-disaster mitigation grant programs; and

**WHEREAS**, Phelps County R-III School District fully participated in the FEMA prescribed mitigation planning process to prepare this Mitigation Plan; and

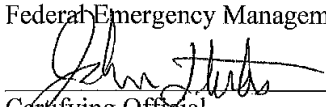
**WHEREAS**, the Missouri State Emergency Management Agency and Federal Emergency Management Agency officials have reviewed the Phelps County Multi-Jurisdictional Natural Hazards Mitigation Plan and approved it contingent upon this official adoption of the participating governing body; and

**WHEREAS**, Phelps County R-III School District desires to comply with the requirements of the Disaster Mitigation Act and to augment its emergency planning efforts by formally adopting the Phelps County Multi-Jurisdiction Natural Hazards Mitigation Plan; and

**WHEREAS**, adoption by the governing body of Phelps County R-III School District demonstrates the jurisdiction's commitment to fulfilling the mitigation goals and objectives outlined in this Mitigation Plan; and

**WHEREAS**, adoption of this legitimizes the plan and authorizes responsible agencies to carry out their responsibilities under the plan;

**NOW, THEREFORE BE IT RESOLVED**, that Phelps County R-III School District adopts the Phelps County Multi-Jurisdictional Natural Hazards Mitigation Plan as an official plan and will submit this Adoption Resolution to the Missouri Emergency Management Agency and the Federal Emergency Management Agency officials to enable the plan's final approval.

  
\_\_\_\_\_  
Certifying Official

  
\_\_\_\_\_  
Date

  
\_\_\_\_\_  
Witness

  
\_\_\_\_\_  
Date

RESOLUTION NO. \_\_\_\_\_

**A RESOLUTION TO ADOPT THE PHELPS COUNTY  
MULTI-JURISDICTION NATURAL HAZARDS MITIGATION PLAN**

**WHEREAS**, Rolla 31 School District recognizes the threat that natural hazards pose to people and property within our community; and

**WHEREAS**, undertaking hazard mitigation actions will reduce the potential for harm to people and property from future hazard occurrences; and

**WHEREAS**, the U.S. Congress passed the Disaster Mitigation Act of 2000 emphasizing the need for pre-disaster mitigation of potential hazards and made available hazard mitigation grants to state and local governments; and

**WHEREAS**, an adopted Multi-Jurisdiction Natural Hazards Mitigation Plan is required as a condition of future funding for mitigation projects under multiple FEMA pre-and post-disaster mitigation grant programs; and

**WHEREAS**, Rolla 31 School District fully participated in the FEMA prescribed mitigation planning process to prepare this Mitigation Plan; and

**WHEREAS**, the Missouri State Emergency Management Agency and Federal Emergency Management Agency officials have reviewed the Phelps County Multi-Jurisdictional Natural Hazards Mitigation Plan and approved it contingent upon this official adoption of the participating governing body; and

**WHEREAS**, Rolla 31 School District desires to comply with the requirements of the Disaster Mitigation Act and to augment its emergency planning efforts by formally adopting the Phelps County Multi-Jurisdiction Natural Hazards Mitigation Plan; and

**WHEREAS**, adoption by the governing body of Rolla 31 School District demonstrates the jurisdiction's commitment to fulfilling the mitigation goals and objectives outlined in this Mitigation Plan; and

**WHEREAS**, adoption of this legitimizes the plan and authorizes responsible agencies to carry out their responsibilities under the plan;

**NOW, THEREFORE BE IT RESOLVED**, that Rolla 31 School District adopts the Phelps County Multi-Jurisdictional Natural Hazards Mitigation Plan as an official plan and will submit this Adoption Resolution to the Missouri Emergency Management Agency and the Federal Emergency Management Agency officials to enable the plan's final approval.

James H. Packard  
Certifying Official

3/18/21  
Date

Myra Ragan  
Witness

3/18/2021  
Date

## E: Critical/Essential Facilities

The table below (**Table 6.1**) provides information for critical facilities in the planning area. Specific information includes a Hazus ID if applicable, jurisdiction, building name/owner, and address.

**Table 6.1 Phelps County Critical Facilities by Type and Jurisdiction**

HazusID	Jurisdiction	Building Name	Address	City	State	Zip
<b>Emergency Facilities</b>						
	Phelps County	Phelps County Ambulance Dist.	504 18th St.	Rolla	MO	65401
	Rolla	Rolla Emergency Mgmt. & Cntrl. Comm.	1007 N Elm St.	Rolla	MO	65401
	St. James	St. James Ambulance Dist.	103 N. Louise	St. James	MO	65559
<b>Fire Department Facilities</b>						
	Doolittle	Doolittle Rural Fire Prot. Dist.1	281 Bouman St.	Doolittle	MO	65550
	Doolittle	Doolittle Rural Fire Prot. Dist.2	11845 Main St.	Jerome	MO	65529
	Duke	Duke Rural Fire Dist.	30003 CR 6630	Duke	MO	65461
	Edgar Springs	Edgar Springs Rural FD	1150 Broadway	Edgar Springs	MO	65462
MO000569	Rolla	Rolla Fire and Rescue #1	1490 E. 10th St.	Rolla	MO	65401
	Rolla	Rolla Fire and Rescue #2	400 W. 4th St.	Rolla	MO	65401
	Rolla	Rolla Rural Fire Prot. Dist. 1	1575 E. Lions Club Dr.	Rolla	MO	65401

	Rolla	Rolla Rural Fire Prot. Dist. 2	18953 S. Hwy. 63	Rolla	MO	65401
	Rolla	Rolla Rural Fire Prot. Dist. 3	10830 Private Dr. 2074	Rolla	MO	65401
	St. James	St. James Fire Prot. Dist. 1	300 E. Eldon St.	St. James	MO	65559
	St. James	St. James Fire Prot. Dist. 2	15995 S. Hwy. 68	St. James	MO	65559
<b>Law Enforcement Facilities</b>						
	Doolittle	Doolittle Police Dept.	380 Eisenhower St.	Doolittle	MO	65401
	Edgar Springs	Edgar Springs Police Dept.	555 Broadway	Edgar Springs	MO	65462
	State	Missouri Hwy. Patrol Troop I	1301 Nagogami Rd	Rolla	MO	65401
MO000351	Newburg	Newburg Police Dept.	30 W. 2nd St.	Newburg	MO	65550
MO000377	Phelps County	Phelps County Sheriff	500 W 2nd St.	Rolla	MO	65550
MO000047	Rolla	Rolla Police Dept.	1007 N Elm St.	Rolla	MO	65401
<b>Law Enforcement Facilities</b>						
	Rolla	University Police, MO S&T	1201 N. State St.	Rolla	MO	65401
MO000245	St. James	St. James City Police	200 N. Bourbeuse St.	St. James	MO	65559
<b>Medical Facilities</b>						
	Phelps County	Phelps Health	1000 West 10th St.	Rolla	MO	65401
	Phelps County	Phelps-Maries Health Dept.	200 N. Main, Suite G51	Rolla	MO	65401
	Rolla	Rolla Dialysis	1503 E. 10th St.	Rolla	MO	65401

	Rolla	Physician Surgery Center, LLC	1500 Hwy. 72 E.	Rolla	MO	65401
	Rolla	Rolla Family Clinic	1060 S. Bishop Ave.	Rolla	MO	65401
	Rolla	Phelps Health Medical Group, Inc.	1050 W. Tenth St.	Rolla	MO	65401
	Rolla	Mercy Clinic	1605 Martin Springs Dr., Ste. 230	Rolla	MO	65401
	St. James	Phelps Health Medical Group	1000 N. Jefferson	St. James	MO	65559
	St. James	Mercy Clinic Family Medicine	107 W. Eldon St.	St. James	MO	65559
<b>School Facilities</b>						
MO000937	Edgar Springs	Phelps Co. Elem.	17790 State Rte. M	Edgar Springs	MO	65462
MO000935	Newburg	Newburg Elem.	701 Wolf Pride Dr.	Newburg	MO	65550
MO000936	Newburg	Newburg High	701 Wolf Pride Dr.	Newburg	MO	65550
MO000108	Rolla	B W Robinson State School	300 Lanning Ln.	Rolla	MO	65401
MO000932	Rolla	Rolla Technical Inst.	1304 E. 10th St.	Rolla	MO	65401
MO000933	Rolla	Harry S. Truman Elem.	1001 E. 18th St.	Rolla	MO	65401
MO000934	Rolla	Rolla Sr. High	900 Bulldog Run	Rolla	MO	65401
MO001524	Rolla	Rolla Seventh-Day Adventist Sch.	814 Hwy. O	Rolla	MO	65401
MO001628	Rolla	St. Patrick Elem. School	19 St. Patrick Ln.	Rolla	MO	65401
MO002256	Rolla	Col. John B. Wyman Elem.	402 Lanning Ln.	Rolla	MO	65401

MO002257	Rolla	Rolla Jr. High	1360 Soest Rd.	Rolla	MO	65401
MO002258	Rolla	Mark Twain Elem.	1100 Mark Twain Dr.	Rolla	MO	65401
MO002259	Rolla	Rolla Middle	1111 Soest Rd.	Rolla	MO	65401
MO002260	Rolla	Rolla Technical Cntr.	500 Forum Dr.	Rolla	MO	65401
MO000930	St. James	Lucy Wortham James Elem.	314 S. Jefferson	St. James	MO	65559
MO000931	St. James	St. James Middle	1 Tiger Dr.	St. James	MO	65559
MO002151	St. James	St. James High	101 E. Scioto	St. James	MO	65559
	St. James	Tiger Cubs 1	220 E. Scioto	St. James	MO	65559
	St. James	Tiger Cubs 2	316 S. Jefferson	St. James	MO	65559
	St. James	Alternative High School	224 E. Scioto	St. James	MO	65559
<b>Childcare Facilities</b>						
	Rolla	Mickelson, Kristina Lynn	11075 Woodale Dr.	Rolla	MO	65401
	Rolla	Marrero, Carmen	13550 County Rd 8100	Rolla	MO	65401
	Rolla	Rolla Head Start Center	1811 E. 10th St.	Rolla	MO	65401
	Rolla	Stepping Stones Child Care Center	814 B Highway O	Rolla	MO	65401
	Rolla	Greentree Child Care and Learning Cntr.	800 Greentree Rd.	Rolla	MO	65401
	Rolla	Christian Life Center Child Development Center	305 E. 1 <sup>st</sup> St.	Rolla	MO	65401

	Rolla	First Presbyterian Preschool	919 E. Tenth St.	Rolla	MO	65401
	Rolla	All Gods Children Day Care	400 Olive St.	Rolla	MO	65401
	Rolla	Kiddie Korner Learning Center & Preschool	302 N. Olive St.	Rolla	MO	65401
	Rolla	Salem Avenue Baptist Church Day Care	1501 Hwy. 72 E.	Rolla	MO	65401
	Rolla	Wands, Debbie	207 Christy Dr.	Rolla	MO	65401
	Rolla	Giesler, Pamela Lynn	307 Williams Rd.	Rolla	MO	65401
	Rolla	First United Methodist Church Preschool	804 Main St.	Rolla	MO	65401
	Rolla	Tender Hearts Preschool Academy, LLC	11697 CR. 8030	Rolla	MO	65401
	St. James	Perona, Loretta Sue	323 Winter Dr.	St. James	MO	65559
	St. James	St. John Lutheran Hand in Hand Preschool	221 W. James Blvd.	St. James	MO	65559
	St. James	St. James Head Start Center	1518 Lola Ln.	St. James	MO	65559
<b>Nursing Homes</b>						
	Rolla	Choices For People Adult Day Care	1815 Forum Dr.	Rolla	MO	65401
	Rolla	Oak Pointe of Rolla	1000 E. Lions Club Dr.	Rolla	MO	65401
	Rolla	Rosewood Residential Care	13450 CR. 7040	Rolla	MO	65401

	Rolla	Parkside - Assisted Living by Americare	1700 E. 10th St.	Rolla	MO	65401
	Rolla	Rolla Presbyterian Manor	1200 Homelife Plaza	Rolla	MO	65401
	St. James	St. James Living Center	415 Sidney St.	St. James	MO	65559
	St. James	Cedar Knoll Home	13635 State Rte. V	St. James	MO	65559
	St. James	Ferndale, Inc.	15677 CR. 2430	St. James	MO	65559
	St. James	Country Valley Home	15750 CR. 2430	St. James	MO	65559
	St. James	Missouri Veterans Home	620 N. Jefferson	St. James	MO	65559

Source: 2020 Data Collection Questionnaires, Missouri DHSS

<https://healthapps.dhss.mo.gov/childcaresearch/>, <https://healthapps.dhss.mo.gov/showmeltc/default.aspx>



## F: MDC Wildfire Data Search

---

View	Discovered Date	County	Station	Cause	Acres Burned
2002-00005-001327	11/08/2002	Phelps	MDC REPORTING REGION - OZARK	Equipment	40
2002-08108-000805	07/23/2002	Phelps	Edgar Springs Rural Fire Protection Dist	Debris	3
2002-08108-000806	08/07/2002	Phelps	Edgar Springs Rural Fire Protection Dist	Debris	7
2002-08108-000810	10/24/2002	Phelps	Edgar Springs Rural Fire Protection Dist	Debris	2
2003-00005-001456	03/26/2003	Phelps	MDC REPORTING REGION - OZARK	Debris	
2003-00005-001475	03/27/2003	Phelps	MDC REPORTING REGION - OZARK	Miscellaneous	30
2003-00005-001519	04/01/2003	Phelps	MDC REPORTING REGION - OZARK	Miscellaneous	1
2003-00005-001544	04/14/2003	Phelps	MDC REPORTING REGION - OZARK	Railroad	1
2003-08104-004156	08/17/2003	Phelps	Duke Rural Fire Department	Unknown	2
2003-08108-000812	02/02/2003	Phelps	Edgar Springs Rural Fire Protection Dist	Debris	2
2003-08108-000815	03/15/2003	Phelps	Edgar Springs Rural Fire Protection Dist	Debris	1
2003-08108-000817	03/23/2003	Phelps	Edgar Springs Rural Fire Protection Dist	Debris	1
2003-08108-000819	03/24/2003	Phelps	Edgar Springs Rural Fire Protection Dist	Debris	5
2003-08108-000822	03/27/2003	Phelps	Edgar Springs Rural Fire Protection Dist	Debris	30
2003-08108-000825	04/01/2003	Phelps	Edgar Springs Rural Fire Protection Dist	Unknown	
2003-08108-000827	04/12/2003	Phelps	Edgar Springs Rural Fire Protection Dist	Debris	2
2003-08108-000831	04/12/2003	Phelps	Edgar Springs Rural Fire Protection Dist	Debris	1
2003-08108-004152	11/12/2003	Phelps	Edgar Springs Rural Fire Protection Dist	Debris	0.5
2003-08108-004153	08/21/2003	Phelps	Edgar Springs Rural Fire Protection Dist	Debris	1
2003-08108-004154	08/20/2003	Phelps	Edgar Springs Rural Fire Protection Dist	Debris	5
2003-08108-004155	08/15/2003	Phelps	Edgar Springs Rural Fire Protection Dist	Unknown	2
2004-00001-004150	03/19/2004	Phelps	MDC REPORTING REGION - CENTRAL	Debris	3
2004-00001-005811	04/05/2004	Phelps	MDC REPORTING REGION - CENTRAL	Miscellaneous	2
2004-08102-005720	02/16/2004	Phelps	Rolla Rural Fire Protection District	Debris	

2004-08102-005721	02/22/2004	Phelps	Rolla Rural Fire Protection District	Debris	0.5
2004-08102-005722	02/26/2004	Phelps	Rolla Rural Fire Protection District	Campfire	
2004-08102-005723	02/28/2004	Phelps	Rolla Rural Fire Protection District	Debris	5
2004-08102-005724	02/28/2004	Phelps	Rolla Rural Fire Protection District	Debris	5
2004-08102-005725	02/28/2004	Phelps	Rolla Rural Fire Protection District	Debris	5
2004-08102-005726	02/28/2004	Phelps	Rolla Rural Fire Protection District	Debris	1
2004-08102-005727	03/01/2004	Phelps	Rolla Rural Fire Protection District	Unknown	2
2004-08102-005728	03/01/2004	Phelps	Rolla Rural Fire Protection District	Debris	5
2004-08102-005729	03/08/2004	Phelps	Rolla Rural Fire Protection District	Debris	1
2004-08102-005730	03/10/2004	Phelps	Rolla Rural Fire Protection District	Debris	2
2004-08102-005731	03/11/2004	Phelps	Rolla Rural Fire Protection District	Debris	4
2004-08102-005732	03/11/2004	Phelps	Rolla Rural Fire Protection District	Debris	4
2004-08102-005733	03/12/2004	Phelps	Rolla Rural Fire Protection District	Debris	4
2004-08102-005734	03/12/2004	Phelps	Rolla Rural Fire Protection District	Debris	
2004-08102-005735	03/12/2004	Phelps	Rolla Rural Fire Protection District	Debris	1
2004-08102-005736	03/19/2004	Phelps	Rolla Rural Fire Protection District	Debris	3
2004-08102-005737	03/19/2004	Phelps	Rolla Rural Fire Protection District	Debris	3
2004-08102-005738	03/19/2004	Phelps	Rolla Rural Fire Protection District	Debris	3
2004-08102-005739	03/22/2004	Phelps	Rolla Rural Fire Protection District	Debris	1
2004-08102-005740	04/04/2004	Phelps	Rolla Rural Fire Protection District	Debris	1
2004-08102-005741	04/08/2004	Phelps	Rolla Rural Fire Protection District	Unknown	5
2004-08102-005742	04/14/2004	Phelps	Rolla Rural Fire Protection District	Debris	0.3
2004-08102-005743	04/15/2004	Phelps	Rolla Rural Fire Protection District	Unknown	1
2004-08102-005744	04/18/2004	Phelps	Rolla Rural Fire Protection District	Debris	4
2004-08102-005745	04/19/2004	Phelps	Rolla Rural Fire Protection District	Unknown	1
2004-08102-006060	11/08/2004	Phelps	Rolla Rural Fire Protection District	Debris	2
2004-08102-006061	10/24/2004	Phelps	Rolla Rural Fire Protection District	Unknown	5
2004-08102-006473	12/31/2004	Phelps	Rolla Rural Fire Protection District	Debris	1
2004-08102-006474	12/30/2004	Phelps	Rolla Rural Fire Protection District	Unknown	1

2004-08102-006475	12/30/2004	Phelps	Rolla Rural Fire Protection District	Unknown	1
2004-08102-009975	12/22/2004	Phelps	Rolla Rural Fire Protection District	Debris	1
2004-08104-005903	04/04/2004	Phelps	Duke Rural Fire Department	Debris	5
2004-08104-005904	03/01/2004	Phelps	Duke Rural Fire Department	Miscellaneous	0.01
2004-08104-005905	03/13/2004	Phelps	Duke Rural Fire Department	Debris	0.01
2004-08104-006022	10/02/2004	Phelps	Duke Rural Fire Department	Debris	1
2004-08104-006793	12/30/2004	Phelps	Duke Rural Fire Department	Arson	8
2004-08104-006794	10/24/2004	Phelps	Duke Rural Fire Department	Debris	1
2004-08110-004162	01/15/2004	Phelps	St. James Fire Protection District	Debris	1
2004-08110-004163	01/14/2004	Phelps	St. James Fire Protection District	Debris	0.25
2004-08110-004164	01/11/2004	Phelps	St. James Fire Protection District	Debris	0.75
2004-08110-004165	02/17/2004	Phelps	St. James Fire Protection District	Debris	0.25
2004-08110-004166	02/22/2004	Phelps	St. James Fire Protection District	Debris	0.75
2004-08110-004167	02/27/2004	Phelps	St. James Fire Protection District	Debris	0.25
2004-08110-004168	02/27/2004	Phelps	St. James Fire Protection District	Debris	
2004-08110-004169	02/27/2004	Phelps	St. James Fire Protection District	Miscellaneous	0.25
2004-08110-004170	02/28/2004	Phelps	St. James Fire Protection District	Debris	3
2004-08110-004171	03/02/2004	Phelps	St. James Fire Protection District	Debris	0.5
2004-08110-004172	03/02/2004	Phelps	St. James Fire Protection District	Debris	2
2004-08110-004176	03/08/2004	Phelps	St. James Fire Protection District	Unknown	1.5
2004-08110-004178	03/08/2004	Phelps	St. James Fire Protection District	Debris	
2004-08110-004180	03/19/2004	Phelps	St. James Fire Protection District	Debris	2
2004-08110-004182	03/19/2004	Phelps	St. James Fire Protection District	Debris	0.5
2004-08110-004184	03/25/2004	Phelps	St. James Fire Protection District	Railroad	0.25
2004-08110-006468	12/04/2004	Phelps	St. James Fire Protection District	Debris	1
2004-08110-006469	12/25/2004	Phelps	St. James Fire Protection District	Debris	0.5
2004-08110-006470	12/28/2004	Phelps	St. James Fire Protection District	Debris	3
2004-08110-006471	12/28/2004	Phelps	St. James Fire Protection District	Debris	3
2004-76409-005454	02/29/2004	Phelps	SALEM FORESTRY	Arson	8

2005-07030-009000	04/03/2005	Phelps	Middletown Community Fire Protection District	Arson	4
2005-07030-009001	03/29/2005	Phelps	Middletown Community Fire Protection District	Debris	60
2005-08100-007062	03/31/2005	Phelps	ROLLA FORESTRY	Debris	99
2005-08100-007063	03/29/2005	Phelps	ROLLA FORESTRY	Arson	50
2005-08100-007064	03/30/2005	Phelps	ROLLA FORESTRY	Debris	450
2005-08100-008108	03/29/2005	Phelps	ROLLA FORESTRY	Debris	3
2005-08100-008170	03/18/2005	Phelps	ROLLA FORESTRY	Miscellaneous	23
2005-08100-009840	11/12/2005	Phelps	ROLLA FORESTRY	Arson	23
2005-08100-009841	11/12/2005	Phelps	ROLLA FORESTRY	Arson	6
2005-08102-006472	01/20/2005	Phelps	Rolla Rural Fire Protection District	Debris	2
2005-08102-006884	04/18/2005	Phelps	Rolla Rural Fire Protection District	Unknown	0.5
2005-08102-006885	03/02/2005	Phelps	Rolla Rural Fire Protection District	Debris	10
2005-08102-006886	02/15/2005	Phelps	Rolla Rural Fire Protection District	Unknown	5
2005-08102-006887	02/26/2005	Phelps	Rolla Rural Fire Protection District	Miscellaneous	0.4
2005-08102-006888	02/26/2005	Phelps	Rolla Rural Fire Protection District	Debris	2
2005-08102-006889	03/06/2005	Phelps	Rolla Rural Fire Protection District	Miscellaneous	7
2005-08102-006890	03/05/2005	Phelps	Rolla Rural Fire Protection District	Not Reported	0.5
2005-08102-006891	03/06/2005	Phelps	Rolla Rural Fire Protection District	Debris	5
2005-08102-006892	03/08/2005	Phelps	Rolla Rural Fire Protection District	Debris	2
2005-08102-006893	03/12/2005	Phelps	Rolla Rural Fire Protection District	Debris	2
2005-08102-006894	03/12/2005	Phelps	Rolla Rural Fire Protection District	Miscellaneous	10
2005-08102-006912	03/12/2005	Phelps	Rolla Rural Fire Protection District	Miscellaneous	1
2005-08102-006913	03/12/2005	Phelps	Rolla Rural Fire Protection District	Miscellaneous	0.5
2005-08102-006914	03/12/2005	Phelps	Rolla Rural Fire Protection District	Miscellaneous	3
2005-08102-006915	03/12/2005	Phelps	Rolla Rural Fire Protection District	Miscellaneous	1
2005-08102-006916	03/13/2005	Phelps	Rolla Rural Fire Protection District	Debris	1
2005-08102-008109	03/14/2005	Phelps	Rolla Rural Fire Protection District	Unknown	3

2005-08102-008110	03/29/2005	Phelps	Rolla Rural Fire Protection District	Debris	10
2005-08102-008111	03/29/2005	Phelps	Rolla Rural Fire Protection District	Unknown	30
2005-08102-008112	03/30/2005	Phelps	Rolla Rural Fire Protection District	Unknown	500
2005-08102-008113	04/03/2005	Phelps	Rolla Rural Fire Protection District	Miscellaneous	8
2005-08102-009972	11/12/2005	Phelps	Rolla Rural Fire Protection District	Miscellaneous	10
2005-08102-009973	11/19/2005	Phelps	Rolla Rural Fire Protection District	Debris	0.5
2005-08102-009974	11/23/2005	Phelps	Rolla Rural Fire Protection District	Miscellaneous	1
2005-08110-006784	01/25/2005	Phelps	St. James Fire Protection District	Debris	6
2005-08110-006785	01/25/2005	Phelps	St. James Fire Protection District	Debris	0.25
2005-08110-006786	02/05/2005	Phelps	St. James Fire Protection District	Debris	0.25
2005-08110-006787	02/15/2005	Phelps	St. James Fire Protection District	Debris	3
2005-08110-006788	02/15/2005	Phelps	St. James Fire Protection District	Miscellaneous	15
2005-08110-006789	02/18/2005	Phelps	St. James Fire Protection District	Unknown	0.25
2005-08110-006790	02/20/2005	Phelps	St. James Fire Protection District	Miscellaneous	0.25
2005-08110-006791	02/26/2005	Phelps	St. James Fire Protection District	Debris	3
2005-08110-006792	02/27/2005	Phelps	St. James Fire Protection District	Debris	2
2005-08110-008114	03/02/2005	Phelps	St. James Fire Protection District	Debris	2
2005-08110-008116	03/11/2005	Phelps	St. James Fire Protection District	Arson	0.25
2005-08110-008117	03/11/2005	Phelps	St. James Fire Protection District	Arson	0.25
2005-08110-008118	03/11/2005	Phelps	St. James Fire Protection District	Arson	0.25
2005-08110-008119	03/12/2005	Phelps	St. James Fire Protection District	Debris	1
2005-08110-008120	03/12/2005	Phelps	St. James Fire Protection District	Debris	2
2005-08110-008121	03/12/2005	Phelps	St. James Fire Protection District	Debris	3
2005-08110-008123	03/17/2005	Phelps	St. James Fire Protection District	Debris	0.25
2005-08110-008124	03/17/2005	Phelps	St. James Fire Protection District	Debris	2
2005-08110-008125	03/18/2005	Phelps	St. James Fire Protection District	Debris	35
2005-08110-008126	03/20/2005	Phelps	St. James Fire Protection District	Debris	0.5
2005-08110-008127	03/29/2005	Phelps	St. James Fire Protection District	Debris	8
2005-08110-008128	03/29/2005	Phelps	St. James Fire Protection District	Debris	8

2005-08110-008130	03/30/2005	Phelps	St. James Fire Protection District	Unknown	0.5
2005-08110-008131	03/31/2005	Phelps	St. James Fire Protection District	Unknown	0.25
2005-08518-008139	01/24/2005	Phelps	Dixon Rural Fire Protection District	Not Reported	0.1
2005-08518-008174	04/03/2005	Phelps	Dixon Rural Fire Protection District	Debris	2
2006-06313-025463	07/29/2006	Phelps	Vichy Volunteer Fire Protection Assoc	Unknown	0.05
2006-06313-025464	08/08/2006	Phelps	Vichy Volunteer Fire Protection Assoc	Unknown	200
2006-08100-025094	08/08/2006	Phelps	ROLLA FORESTRY	Lightning	89
2006-08102-011339	01/25/2006	Phelps	Rolla Rural Fire Protection District	Unknown	2
2006-08102-011341	01/25/2006	Phelps	Rolla Rural Fire Protection District	Unknown	2
2006-08102-011342	01/26/2006	Phelps	Rolla Rural Fire Protection District	Debris	10
2006-08102-011343	01/18/2006	Phelps	Rolla Rural Fire Protection District	Miscellaneous	1
2006-08102-011344	02/23/2006	Phelps	Rolla Rural Fire Protection District	Equipment	1
2006-08102-011345	02/14/2006	Phelps	Rolla Rural Fire Protection District	Debris	2
2006-08102-011346	02/14/2006	Phelps	Rolla Rural Fire Protection District	Debris	1
2006-08102-011348	02/19/2006	Phelps	Rolla Rural Fire Protection District	Unknown	1
2006-08102-012759	03/26/2006	Phelps	Rolla Rural Fire Protection District	Debris	1
2006-08102-012766	03/26/2006	Phelps	Rolla Rural Fire Protection District	Miscellaneous	0.75
2006-08102-012767	03/23/2006	Phelps	Rolla Rural Fire Protection District	Debris	1
2006-08102-012768	03/19/2006	Phelps	Rolla Rural Fire Protection District	Unknown	0.1
2006-08102-012769	03/07/2006	Phelps	Rolla Rural Fire Protection District	Unknown	2
2006-08102-023851	06/02/2006	Phelps	Rolla Rural Fire Protection District	Debris	1
2006-08102-023852	03/16/2006	Phelps	Rolla Rural Fire Protection District	Debris	1
2006-08102-023853	04/04/2006	Phelps	Rolla Rural Fire Protection District	Unknown	1
2006-08102-024324	07/02/2006	Phelps	Rolla Rural Fire Protection District	Unknown	1
2006-08102-024326	07/02/2006	Phelps	Rolla Rural Fire Protection District	Unknown	1
2006-08102-025455	08/05/2006	Phelps	Rolla Rural Fire Protection District	Debris	0.05
2006-08102-026522	11/21/2006	Phelps	Rolla Rural Fire Protection District	Miscellaneous	0.25
2006-08102-026553	07/09/2006	Phelps	Rolla Rural Fire Protection District	Unknown	0.1
2006-08102-026554	04/01/2006	Phelps	Rolla Rural Fire Protection District	Miscellaneous	0.5

2006-08102-026555	02/23/2006	Phelps	Rolla Rural Fire Protection District	Miscellaneous	0.25
2006-08102-026556	04/13/2006	Phelps	Rolla Rural Fire Protection District	Miscellaneous	0.2
2006-08110-011328	01/15/2006	Phelps	St. James Fire Protection District	Miscellaneous	0.1
2006-08110-011330	01/15/2006	Phelps	St. James Fire Protection District	Debris	1
2006-08110-011334	01/19/2006	Phelps	St. James Fire Protection District	Not Reported	0.5
2006-08110-011336	01/27/2006	Phelps	St. James Fire Protection District	Debris	1.5
2006-08110-023854	02/14/2006	Phelps	St. James Fire Protection District	Debris	0.5
2006-08110-023857	02/23/2006	Phelps	St. James Fire Protection District	Debris	2
2006-08110-023858	02/24/2006	Phelps	St. James Fire Protection District	Debris	1
2006-08110-023859	02/27/2006	Phelps	St. James Fire Protection District	Unknown	0.5
2006-08110-023860	03/14/2006	Phelps	St. James Fire Protection District	Debris	0.25
2006-08110-023862	03/26/2006	Phelps	St. James Fire Protection District	Debris	3
2006-08110-023863	03/30/2006	Phelps	St. James Fire Protection District	Debris	1
2006-08110-023864	03/31/2006	Phelps	St. James Fire Protection District	Debris	3
2007-08100-027833	02/23/2007	Phelps	ROLLA FORESTRY	Debris	50
2007-08100-027958	03/05/2007	Phelps	ROLLA FORESTRY	Not Reported	75
2007-08100-031419	08/15/2007	Phelps	ROLLA FORESTRY	Debris	20
2007-08110-029971	01/26/2007	Phelps	St. James Fire Protection District	Unknown	4
2007-08110-029972	02/10/2007	Phelps	St. James Fire Protection District	Unknown	0.5
2007-08110-029973	02/23/2007	Phelps	St. James Fire Protection District	Unknown	2
2007-08110-029974	03/04/2007	Phelps	St. James Fire Protection District	Unknown	0.25
2007-08110-029975	03/06/2007	Phelps	St. James Fire Protection District	Debris	0.5
2007-08110-029976	03/10/2007	Phelps	St. James Fire Protection District	Debris	1.5
2007-08110-029977	03/10/2007	Phelps	St. James Fire Protection District	Debris	2
2007-08110-029978	03/11/2007	Phelps	St. James Fire Protection District	Campfire	0.5
2007-08110-029980	03/21/2007	Phelps	St. James Fire Protection District	Debris	0.5
2007-08110-029981	04/09/2007	Phelps	St. James Fire Protection District	Debris	0.25
2007-08110-029982	04/19/2007	Phelps	St. James Fire Protection District	Debris	0.5
2007-08110-029983	04/20/2007	Phelps	St. James Fire Protection District	Debris	0.25

2007-08110-029984	04/22/2007	Phelps	St. James Fire Protection District	Debris	0.5
2008-02811-034179	03/02/2008	Phelps	Cuba Fire Department	Not Reported	320
2008-02813-034395	03/02/2008	Phelps	Steelville Fire Protection District	Unknown	700
2008-02813-034398	03/12/2008	Phelps	Steelville Fire Protection District	Unknown	100
2008-08100-033608	03/02/2008	Phelps	ROLLA FORESTRY	Debris	22
2008-08100-033609	03/02/2008	Phelps	ROLLA FORESTRY	Miscellaneous	120
2008-08100-033731	03/13/2008	Phelps	ROLLA FORESTRY	Debris	2
2008-08100-034095	03/25/2008	Phelps	ROLLA FORESTRY	Arson	110
2008-08102-034291	01/03/2008	Phelps	Rolla Rural Fire Protection District	Miscellaneous	0.5
2008-08102-034292	01/04/2008	Phelps	Rolla Rural Fire Protection District	Unknown	0.5
2008-08102-034293	01/07/2008	Phelps	Rolla Rural Fire Protection District	Miscellaneous	0.5
2008-08102-034355	01/20/2008	Phelps	Rolla Rural Fire Protection District	Campfire	25
2009-02811-040300	03/23/2009	Phelps	Cuba Fire Department	Unknown	78
2009-08100-038250	03/09/2009	Phelps	ROLLA FORESTRY	Railroad	0.25
2009-08100-038600	03/16/2009	Phelps	ROLLA FORESTRY	Debris	25
2009-08100-038912	03/23/2009	Phelps	ROLLA FORESTRY	Debris	8
2009-08100-038914	03/23/2009	Phelps	ROLLA FORESTRY	Smoking	80
2009-08102-039157	01/17/2009	Phelps	Rolla Rural Fire Protection District	Unknown	1
2009-08102-039158	01/22/2009	Phelps	Rolla Rural Fire Protection District	Miscellaneous	2
2009-08102-039159	01/22/2009	Phelps	Rolla Rural Fire Protection District	Miscellaneous	7
2009-08102-039160	02/10/2009	Phelps	Rolla Rural Fire Protection District	Unknown	1
2009-08102-039161	01/09/2009	Phelps	Rolla Rural Fire Protection District	Unknown	2
2009-08102-039162	03/14/2009	Phelps	Rolla Rural Fire Protection District	Unknown	3
2009-08102-039163	01/09/2009	Phelps	Rolla Rural Fire Protection District	Unknown	30
2009-08102-039164	01/21/2009	Phelps	Rolla Rural Fire Protection District	Unknown	1
2009-08102-039165	02/22/2009	Phelps	Rolla Rural Fire Protection District	Unknown	5
2009-08102-039228	01/22/2009	Phelps	Rolla Rural Fire Protection District	Miscellaneous	12
2009-08102-039229	03/17/2009	Phelps	Rolla Rural Fire Protection District	Miscellaneous	10
2009-08102-039230	03/23/2009	Phelps	Rolla Rural Fire Protection District	Miscellaneous	1



2009-08102-039231	03/26/2009	Phelps	Rolla Rural Fire Protection District	Miscellaneous	1
2009-08102-039232	03/23/2009	Phelps	Rolla Rural Fire Protection District	Miscellaneous	5
2009-08102-039234	02/25/2009	Phelps	Rolla Rural Fire Protection District	Miscellaneous	5
2009-08102-039235	03/22/2009	Phelps	Rolla Rural Fire Protection District	Miscellaneous	4
2009-08102-039247	02/23/2009	Phelps	Rolla Rural Fire Protection District	Miscellaneous	2
2009-08102-039248	03/23/2009	Phelps	Rolla Rural Fire Protection District	Unknown	2
2009-08102-039249	03/23/2009	Phelps	Rolla Rural Fire Protection District	Unknown	1
2009-08102-039251	03/17/2009	Phelps	Rolla Rural Fire Protection District	Unknown	3
2009-08102-039252	02/25/2009	Phelps	Rolla Rural Fire Protection District	Unknown	2
2009-08102-039253	03/14/2009	Phelps	Rolla Rural Fire Protection District	Arson	1
2009-08102-039254	03/14/2009	Phelps	Rolla Rural Fire Protection District	Arson	1
2009-08102-039255	03/17/2009	Phelps	Rolla Rural Fire Protection District	Unknown	1
2009-08102-039256	03/17/2009	Phelps	Rolla Rural Fire Protection District	Unknown	2
2009-08102-039257	03/20/2009	Phelps	Rolla Rural Fire Protection District	Unknown	2
2009-08102-039258	03/22/2009	Phelps	Rolla Rural Fire Protection District	Unknown	15
2009-08102-039260	03/16/2009	Phelps	Rolla Rural Fire Protection District	Unknown	1
2009-08102-039261	03/05/2009	Phelps	Rolla Rural Fire Protection District	Unknown	1
2009-08102-039262	03/05/2009	Phelps	Rolla Rural Fire Protection District	Unknown	3
2009-08102-039264	03/06/2009	Phelps	Rolla Rural Fire Protection District	Unknown	1
2009-08102-039265	03/09/2009	Phelps	Rolla Rural Fire Protection District	Railroad	1
2009-08102-039266	03/10/2009	Phelps	Rolla Rural Fire Protection District	Unknown	1
2009-08102-039267	03/04/2009	Phelps	Rolla Rural Fire Protection District	Unknown	1
2009-08102-039268	02/25/2009	Phelps	Rolla Rural Fire Protection District	Unknown	1
2009-08102-039269	02/25/2009	Phelps	Rolla Rural Fire Protection District	Arson	1
2009-08102-039270	01/13/2009	Phelps	Rolla Rural Fire Protection District	Unknown	1
2009-08102-039271	03/30/2009	Phelps	Rolla Rural Fire Protection District	Unknown	1
2009-08102-039366	01/22/2009	Phelps	Rolla Rural Fire Protection District	Miscellaneous	3
2009-08102-039367	02/16/2009	Phelps	Rolla Rural Fire Protection District	Miscellaneous	2
2009-08102-039368	01/02/2009	Phelps	Rolla Rural Fire Protection District	Miscellaneous	1

2009-08102-039369	02/16/2009	Phelps	Rolla Rural Fire Protection District	Miscellaneous	1
2009-08102-039370	02/16/2009	Phelps	Rolla Rural Fire Protection District	Miscellaneous	15
2009-08102-039371	03/20/2009	Phelps	Rolla Rural Fire Protection District	Miscellaneous	1
2009-08102-039372	03/22/2009	Phelps	Rolla Rural Fire Protection District	Miscellaneous	10
2009-08102-039373	01/22/2009	Phelps	Rolla Rural Fire Protection District	Miscellaneous	5
2009-08102-039374	03/30/2009	Phelps	Rolla Rural Fire Protection District	Miscellaneous	2
2009-08104-039652	03/30/2009	Phelps	Duke Rural Fire Department	Arson	8
2009-08104-039654	04/03/2009	Phelps	Duke Rural Fire Department	Arson	0.5
2009-08104-039657	04/04/2009	Phelps	Duke Rural Fire Department	Arson	0.8
2009-08104-039658	04/04/2009	Phelps	Duke Rural Fire Department	Arson	0.5
2009-08104-039659	04/07/2009	Phelps	Duke Rural Fire Department	Unknown	1
2009-08104-039660	04/08/2009	Phelps	Duke Rural Fire Department	Unknown	0.5
2009-08104-039661	04/08/2009	Phelps	Duke Rural Fire Department	Unknown	50
2009-08104-039662	04/08/2009	Phelps	Duke Rural Fire Department	Unknown	2
2009-08104-039663	04/08/2009	Phelps	Duke Rural Fire Department	Arson	0.8
2009-08104-039664	04/08/2009	Phelps	Duke Rural Fire Department	Arson	0.8
2009-08104-039764	03/30/2009	Phelps	Duke Rural Fire Department	Arson	8
2009-08104-039765	04/15/2009	Phelps	Duke Rural Fire Department	Arson	4
2009-08104-039793	04/16/2009	Phelps	Duke Rural Fire Department	Arson	4
2010-08101-044424	02/20/2010	Phelps	Doolittle Rural Fire Protection District	Debris	2
2010-08101-044736	03/10/2010	Phelps	Doolittle Rural Fire Protection District	Miscellaneous	2
2010-08101-045059	03/22/2010	Phelps	Doolittle Rural Fire Protection District	Miscellaneous	2
2010-08101-045396	04/09/2010	Phelps	Doolittle Rural Fire Protection District	Debris	0.5
2010-08101-045398	03/06/2010	Phelps	Doolittle Rural Fire Protection District	Debris	20
2010-08101-045412	03/06/2010	Phelps	Doolittle Rural Fire Protection District	Debris	75
2010-08101-045413	03/07/2010	Phelps	Doolittle Rural Fire Protection District	Debris	40
2010-08101-045487	04/12/2010	Phelps	Doolittle Rural Fire Protection District	Debris	2
2010-08101-045609	04/19/2010	Phelps	Doolittle Rural Fire Protection District	Unknown	0.3
2010-08101-046754	07/01/2010	Phelps	Doolittle Rural Fire Protection District	Lightning	0.22

2010-08101-047222	07/28/2010	Phelps	Doolittle Rural Fire Protection District	Debris	0.1
2010-08101-049167	10/18/2010	Phelps	Doolittle Rural Fire Protection District	Debris	0.1
2010-08101-049201	10/28/2010	Phelps	Doolittle Rural Fire Protection District	Unknown	10
2010-08101-049202	10/20/2010	Phelps	Doolittle Rural Fire Protection District	Unknown	0.1
2010-08101-049400	11/06/2010	Phelps	Doolittle Rural Fire Protection District	Unknown	3
2010-08101-049582	11/08/2010	Phelps	Doolittle Rural Fire Protection District	Unknown	2.5
2010-08518-052782	10/30/2010	Phelps	Dixon Rural Fire Protection District	Debris	1
2010-08518-052803	10/31/2010	Phelps	Dixon Rural Fire Protection District	Smoking	0.1
2011-02811-056592	04/16/2011	Phelps	Cuba Fire Department	Unknown	20
2011-08101-054818	03/04/2011	Phelps	Doolittle Rural Fire Protection District	Unknown	0.5
2011-08101-054826	03/03/2011	Phelps	Doolittle Rural Fire Protection District	Debris	5
2011-08101-054827	03/03/2011	Phelps	Doolittle Rural Fire Protection District	Debris	1
2011-08101-054828	02/17/2011	Phelps	Doolittle Rural Fire Protection District	Debris	7
2011-08101-054981	01/30/2011	Phelps	Doolittle Rural Fire Protection District	Unknown	0.5
2011-08101-055236	03/12/2011	Phelps	Doolittle Rural Fire Protection District	Debris	5
2011-08101-055237	03/12/2011	Phelps	Doolittle Rural Fire Protection District	Debris	1
2011-08101-055248	03/19/2011	Phelps	Doolittle Rural Fire Protection District	Debris	1
2011-08101-055337	03/19/2011	Phelps	Doolittle Rural Fire Protection District	Debris	1
2011-08101-055338	03/23/2011	Phelps	Doolittle Rural Fire Protection District	Unknown	3
2011-08101-055421	03/24/2011	Phelps	Doolittle Rural Fire Protection District	Unknown	5
2011-08101-056163	04/03/2011	Phelps	Doolittle Rural Fire Protection District	Unknown	30
2011-08101-056327	04/08/2011	Phelps	Doolittle Rural Fire Protection District	Debris	0.01
2011-08101-056551	04/17/2011	Phelps	Doolittle Rural Fire Protection District	Debris	0.2
2011-08101-058761	07/27/2011	Phelps	Doolittle Rural Fire Protection District	Debris	0.5
2011-08102-065288	12/30/2011	Phelps	Rolla Rural Fire Protection District	Debris	1.5
2011-08518-056321	04/09/2011	Phelps	Dixon Rural Fire Protection District	Debris	0.5
2012-02811-073885	06/28/2012	Phelps	Cuba Fire Department	Unknown	40
2012-02811-079271	08/21/2012	Phelps	Cuba Fire Department	Unknown	30
2012-03322-073699	06/08/2012	Phelps	Lenox Rural Fire Department	Debris	100

2012-08102-065289	01/05/2012	Phelps	Rolla Rural Fire Protection District	Debris	30
2012-08102-065342	01/06/2012	Phelps	Rolla Rural Fire Protection District	Debris	2
2012-08102-065343	01/06/2012	Phelps	Rolla Rural Fire Protection District	Debris	2
2012-08102-065344	01/07/2012	Phelps	Rolla Rural Fire Protection District	Debris	2
2012-08102-065345	01/07/2012	Phelps	Rolla Rural Fire Protection District	Debris	3
2012-08102-065626	01/06/2012	Phelps	Rolla Rural Fire Protection District	Debris	1
2012-08102-065627	01/07/2012	Phelps	Rolla Rural Fire Protection District	Debris	1
2012-08102-065647	01/06/2012	Phelps	Rolla Rural Fire Protection District	Debris	4
2012-08102-065648	01/09/2012	Phelps	Rolla Rural Fire Protection District	Debris	2.5
2012-08102-066047	01/05/2012	Phelps	Rolla Rural Fire Protection District	Miscellaneous	5
2012-08102-066508	01/25/2012	Phelps	Rolla Rural Fire Protection District	Miscellaneous	2
2012-08102-066509	01/29/2012	Phelps	Rolla Rural Fire Protection District	Unknown	1
2012-08102-066510	02/02/2012	Phelps	Rolla Rural Fire Protection District	Unknown	1
2012-08102-066525	02/02/2012	Phelps	Rolla Rural Fire Protection District	Debris	1
2012-08102-066526	01/29/2012	Phelps	Rolla Rural Fire Protection District	Unknown	3
2012-08102-066661	02/02/2012	Phelps	Rolla Rural Fire Protection District	Debris	1
2012-08102-066662	02/02/2012	Phelps	Rolla Rural Fire Protection District	Debris	1
2012-08102-067482	02/19/2012	Phelps	Rolla Rural Fire Protection District	Debris	5
2012-08102-067483	02/20/2012	Phelps	Rolla Rural Fire Protection District	Debris	1
2012-08102-067501	02/20/2012	Phelps	Rolla Rural Fire Protection District	Equipment	10
2012-08102-067643	02/20/2012	Phelps	Rolla Rural Fire Protection District	Unknown	4
2012-08102-068281	02/27/2012	Phelps	Rolla Rural Fire Protection District	Debris	5
2012-08102-068282	02/27/2012	Phelps	Rolla Rural Fire Protection District	Debris	5
2012-08102-068283	02/28/2012	Phelps	Rolla Rural Fire Protection District	Debris	3
2012-08102-068301	02/28/2012	Phelps	Rolla Rural Fire Protection District	Unknown	0.5
2012-08102-068302	02/28/2012	Phelps	Rolla Rural Fire Protection District	Debris	1
2012-08102-068303	03/01/2012	Phelps	Rolla Rural Fire Protection District	Debris	0.5
2012-08102-068652	03/13/2012	Phelps	Rolla Rural Fire Protection District	Debris	1
2012-08102-068802	03/06/2012	Phelps	Rolla Rural Fire Protection District	Debris	2

2012-08102-068803	03/06/2012	Phelps	Rolla Rural Fire Protection District	Debris	1000
2012-08102-069781	03/04/2012	Phelps	Rolla Rural Fire Protection District	Debris	1
2012-08102-069782	03/10/2012	Phelps	Rolla Rural Fire Protection District	Unknown	0.5
2012-08102-069961	03/19/2012	Phelps	Rolla Rural Fire Protection District	Debris	1
2012-08518-067063	01/24/2012	Phelps	Dixon Rural Fire Protection District	Debris	20
2012-08518-071027	03/01/2012	Phelps	Dixon Rural Fire Protection District	Debris	2
2012-08518-071070	04/25/2012	Phelps	Dixon Rural Fire Protection District	Debris	25
2012-08518-074261	05/22/2012	Phelps	Dixon Rural Fire Protection District	Debris	1
2012-08518-074302	07/14/2012	Phelps	Dixon Rural Fire Protection District	Debris	10
2012-10714-069799	03/07/2012	Phelps	Licking Fire Dept.	Unknown	25
2012-10714-069841	03/06/2012	Phelps	Licking Fire Dept.	Unknown	100
2012-10714-073450	06/08/2012	Phelps	Licking Fire Dept.	Unknown	100
2012-10714-076641	08/16/2012	Phelps	Licking Fire Dept.	Unknown	60
2012-76409-068038	03/06/2012	Phelps	SALEM FORESTRY	Arson	12
2013-02811-090211	04/06/2013	Phelps	Cuba Fire Department	Debris	5
2013-08102-086343	04/17/2013	Phelps	Rolla Rural Fire Protection District	Unknown	2
2014-00008-095683	03/15/2014	Phelps	MDC REPORTING REGION - ST. LOUIS	Debris	10
2014-02811-106551	03/13/2014	Phelps	Cuba Fire Department	Debris	15
2014-02813-095223	03/11/2014	Phelps	Steelville Fire Protection District	Unknown	5
2014-03322-096137	03/15/2014	Phelps	Lenox Rural Fire Department	Debris	22
2014-06313-111592	03/28/2014	Phelps	Vichy Volunteer Fire Protection Assoc	Miscellaneous	21
2014-08102-095061	01/01/2014	Phelps	Rolla Rural Fire Protection District	Miscellaneous	3
2014-08102-095114	01/14/2014	Phelps	Rolla Rural Fire Protection District	Unknown	5
2014-08102-095115	01/20/2014	Phelps	Rolla Rural Fire Protection District	Unknown	3
2014-08102-095116	01/26/2014	Phelps	Rolla Rural Fire Protection District	Unknown	0.5
2014-08102-095119	01/29/2014	Phelps	Rolla Rural Fire Protection District	Unknown	0.5
2014-08102-095120	01/29/2014	Phelps	Rolla Rural Fire Protection District	Unknown	2
2014-08102-095121	02/11/2014	Phelps	Rolla Rural Fire Protection District	Unknown	0.5
2014-08102-095122	02/19/2014	Phelps	Rolla Rural Fire Protection District	Unknown	0.25

2014-08102-095123	02/22/2014	Phelps	Rolla Rural Fire Protection District	Unknown	3
2014-08102-095124	02/24/2014	Phelps	Rolla Rural Fire Protection District	Unknown	0.5
2014-08102-095125	02/27/2014	Phelps	Rolla Rural Fire Protection District	Unknown	0.5
2014-08102-095126	03/01/2014	Phelps	Rolla Rural Fire Protection District	Unknown	0.5
2014-08102-095127	03/05/2014	Phelps	Rolla Rural Fire Protection District	Debris	0.25
2014-08102-095128	03/06/2014	Phelps	Rolla Rural Fire Protection District	Unknown	0.5
2014-08102-095139	03/05/2014	Phelps	Rolla Rural Fire Protection District	Miscellaneous	4
2014-08518-095060	03/07/2014	Phelps	Dixon Rural Fire Protection District	Debris	2
2015-03322-122295	03/31/2015	Phelps	Lenox Rural Fire Department	Debris	5
2015-08102-128992	01/09/2015	Phelps	Rolla Rural Fire Protection District	Debris	1
2015-08102-128993	02/07/2015	Phelps	Rolla Rural Fire Protection District	Miscellaneous	5
2015-08102-128994	02/08/2015	Phelps	Rolla Rural Fire Protection District	Equipment	1
2015-08102-128995	02/27/2015	Phelps	Rolla Rural Fire Protection District	Debris	1
2015-08102-128996	03/07/2015	Phelps	Rolla Rural Fire Protection District	Unknown	20
2015-08102-128997	03/15/2015	Phelps	Rolla Rural Fire Protection District	Not Reported	2
2015-08102-128998	03/15/2015	Phelps	Rolla Rural Fire Protection District	Debris	1
2015-08102-128999	03/15/2015	Phelps	Rolla Rural Fire Protection District	Unknown	2
2015-08102-129000	03/15/2015	Phelps	Rolla Rural Fire Protection District	Debris	1
2015-08102-129001	03/23/2015	Phelps	Rolla Rural Fire Protection District	Unknown	2
2015-08102-129002	03/23/2015	Phelps	Rolla Rural Fire Protection District	Debris	1
2015-08102-129003	03/28/2015	Phelps	Rolla Rural Fire Protection District	Debris	1
2015-08102-129019	03/30/2015	Phelps	Rolla Rural Fire Protection District	Unknown	30
2015-08102-129020	03/30/2015	Phelps	Rolla Rural Fire Protection District	Unknown	5
2015-08102-129021	03/30/2015	Phelps	Rolla Rural Fire Protection District	Debris	1
2015-08102-129022	03/31/2015	Phelps	Rolla Rural Fire Protection District	Debris	2
2015-08102-129023	03/31/2015	Phelps	Rolla Rural Fire Protection District	Unknown	20
2015-08102-129024	04/01/2015	Phelps	Rolla Rural Fire Protection District	Debris	5
2015-08102-129026	04/12/2015	Phelps	Rolla Rural Fire Protection District	Debris	1
2015-08102-129027	04/12/2015	Phelps	Rolla Rural Fire Protection District	Debris	30

2015-08102-129028	05/03/2015	Phelps	Rolla Rural Fire Protection District	Unknown	1
2015-08102-129029	06/27/2015	Phelps	Rolla Rural Fire Protection District	Unknown	1
2015-08102-129031	08/08/2015	Phelps	Rolla Rural Fire Protection District	Debris	1
2015-08102-129032	08/11/2015	Phelps	Rolla Rural Fire Protection District	Debris	1
2015-08102-129033	10/01/2015	Phelps	Rolla Rural Fire Protection District	Debris	1
2016-01500-131971	10/17/2016	Phelps	CAMDENTON FORESTRY	Campfire	198.62
2016-03322-135518	04/03/2016	Phelps	Lenox Rural Fire Department	Unknown	40
2016-03322-135520	04/03/2016	Phelps	Lenox Rural Fire Department	Unknown	40
2016-06313-141131	01/16/2016	Phelps	Vichy Volunteer Fire Protection Assoc	Miscellaneous	2
2016-10714-132617	12/20/2015	Phelps	Licking Fire Dept.	Unknown	2
2016-10714-133949	02/29/2016	Phelps	Licking Fire Dept.	Debris	25
2017-02811-145753	02/15/2017	Phelps	Cuba Fire Department	Debris	10
2017-03322-149311	04/04/2017	Phelps	Lenox Rural Fire Department	Not Reported	1
2017-06313-164921	11/27/2017	Phelps	Vichy Volunteer Fire Protection Assoc	Miscellaneous	17
2019-00000-178224	04/30/2018	Phelps	MDC Forestry	Debris	30.51
2019-08102-178592	04/07/2019	Phelps	Rolla Rural Fire Protection District	Unknown	2.05
2019-08102-178606	04/10/2019	Phelps	Rolla Rural Fire Protection District	Unknown	17.85
2019-08102-178607	03/22/2019	Phelps	Rolla Rural Fire Protection District	Miscellaneous	0.05
2019-08102-178613	12/05/2018	Phelps	Rolla Rural Fire Protection District	Unknown	0.02
2019-08102-178621	04/22/2018	Phelps	Rolla Rural Fire Protection District	Miscellaneous	0.03
2019-08102-178623	04/21/2018	Phelps	Rolla Rural Fire Protection District	Unknown	0.58
2019-08102-178629	04/07/2018	Phelps	Rolla Rural Fire Protection District	Miscellaneous	3.46
2019-08102-178630	04/09/2018	Phelps	Rolla Rural Fire Protection District	Not Reported	0.66
2019-08102-178631	04/10/2018	Phelps	Rolla Rural Fire Protection District	Miscellaneous	0.01
2019-08102-178632	03/23/2018	Phelps	Rolla Rural Fire Protection District	Miscellaneous	
2019-08102-178638	03/22/2018	Phelps	Rolla Rural Fire Protection District	Unknown	
2019-08102-178639	03/14/2018	Phelps	Rolla Rural Fire Protection District	Debris	1.94
2019-08102-178640	03/14/2018	Phelps	Rolla Rural Fire Protection District	Unknown	2.63
2019-08102-178641	03/14/2018	Phelps	Rolla Rural Fire Protection District	Miscellaneous	0.02

2019-08102-178648	04/25/2018	Phelps	Rolla Rural Fire Protection District	Unknown	0.2
2019-08102-178649	02/25/2019	Phelps	Rolla Rural Fire Protection District	Miscellaneous	0.16
2019-08102-178674	08/10/2018	Phelps	Rolla Rural Fire Protection District	Debris	
2019-08102-178675	08/09/2018	Phelps	Rolla Rural Fire Protection District	Debris	0.11
2019-08102-178688	08/17/2018	Phelps	Rolla Rural Fire Protection District	Unknown	0.01
2019-08102-178691	08/08/2018	Phelps	Rolla Rural Fire Protection District	Unknown	0.07
2019-08102-178698	07/09/2018	Phelps	Rolla Rural Fire Protection District	Miscellaneous	0.89
2019-08102-178699	07/09/2018	Phelps	Rolla Rural Fire Protection District	Miscellaneous	0.01
2019-08102-178700	04/24/2018	Phelps	Rolla Rural Fire Protection District	Unknown	0.66
2019-08102-178701	03/04/2018	Phelps	Rolla Rural Fire Protection District	Smoking	0.23
2019-08102-178702	03/04/2018	Phelps	Rolla Rural Fire Protection District	Unknown	0.25
2019-08102-178703	03/04/2018	Phelps	Rolla Rural Fire Protection District	Miscellaneous	0.14
2019-08102-178704	03/03/2018	Phelps	Rolla Rural Fire Protection District	Miscellaneous	4.52
2019-08102-178711	02/27/2018	Phelps	Rolla Rural Fire Protection District	Unknown	12.82
2019-08102-178712	02/27/2018	Phelps	Rolla Rural Fire Protection District	Unknown	0.92
2019-08102-178713	02/15/2018	Phelps	Rolla Rural Fire Protection District	Unknown	0.17
2019-08102-178714	02/15/2018	Phelps	Rolla Rural Fire Protection District	Miscellaneous	0.01
2019-08102-178715	02/09/2018	Phelps	Rolla Rural Fire Protection District	Miscellaneous	7.84
2019-08102-178721	02/03/2018	Phelps	Rolla Rural Fire Protection District	Miscellaneous	1.92
2019-08102-178726	02/01/2018	Phelps	Rolla Rural Fire Protection District	Miscellaneous	1.19
2019-08102-178727	02/01/2018	Phelps	Rolla Rural Fire Protection District	Unknown	2.72
2019-08102-178728	02/01/2018	Phelps	Rolla Rural Fire Protection District	Unknown	0.93
2019-08102-178729	01/03/2018	Phelps	Rolla Rural Fire Protection District	Unknown	0.13
2019-08102-178730	01/06/2018	Phelps	Rolla Rural Fire Protection District	Unknown	8.59
2019-08102-178731	01/06/2018	Phelps	Rolla Rural Fire Protection District	Unknown	1.05
2019-08102-178732	03/03/2018	Phelps	Rolla Rural Fire Protection District	Miscellaneous	1.13
2019-08102-178735	03/03/2018	Phelps	Rolla Rural Fire Protection District	Unknown	5.92
2019-08102-178736	01/29/2018	Phelps	Rolla Rural Fire Protection District	Miscellaneous	
2019-08102-178737	01/28/2018	Phelps	Rolla Rural Fire Protection District	Unknown	0.33



2019-08102-178738	01/28/2018	Phelps	Rolla Rural Fire Protection District	Unknown	0.01
2019-08102-178741	01/28/2018	Phelps	Rolla Rural Fire Protection District	Miscellaneous	1.69
2019-08102-178744	01/26/2018	Phelps	Rolla Rural Fire Protection District	Unknown	0.27
2019-08102-178745	01/25/2018	Phelps	Rolla Rural Fire Protection District	Unknown	10.04
2019-08102-178746	01/25/2018	Phelps	Rolla Rural Fire Protection District	Unknown	0.97
2019-08102-178747	12/04/2017	Phelps	Rolla Rural Fire Protection District	Miscellaneous	4.87
2019-08102-178749	12/02/2017	Phelps	Rolla Rural Fire Protection District	Unknown	6.33
2019-08102-178758	12/02/2017	Phelps	Rolla Rural Fire Protection District	Miscellaneous	0.19
2019-08102-178759	11/29/2017	Phelps	Rolla Rural Fire Protection District	Unknown	1.47
2019-08102-178760	11/21/2017	Phelps	Rolla Rural Fire Protection District	Unknown	0.24
2019-08102-178761	11/20/2017	Phelps	Rolla Rural Fire Protection District	Unknown	0.08
2019-08102-178763	11/05/2017	Phelps	Rolla Rural Fire Protection District	Unknown	0.03
2019-08102-178768	11/24/2017	Phelps	Rolla Rural Fire Protection District	Miscellaneous	0.3
2019-08102-178773	11/23/2017	Phelps	Rolla Rural Fire Protection District	Miscellaneous	2.25
2019-08102-178774	11/23/2017	Phelps	Rolla Rural Fire Protection District	Miscellaneous	0.38
2019-08102-178775	11/02/2017	Phelps	Rolla Rural Fire Protection District	Miscellaneous	0.07
2019-08102-178776	11/01/2017	Phelps	Rolla Rural Fire Protection District	Miscellaneous	0.01
2019-08102-178790	07/28/2017	Phelps	Rolla Rural Fire Protection District	Debris	5.61
2019-08102-178791	09/15/2017	Phelps	Rolla Rural Fire Protection District	Unknown	0.03
2019-08102-178792	09/23/2017	Phelps	Rolla Rural Fire Protection District	Debris	4.23
2019-08102-178793	06/28/2017	Phelps	Rolla Rural Fire Protection District	Fireworks	0.02
2019-08102-178794	06/26/2017	Phelps	Rolla Rural Fire Protection District	Unknown	0.05
2019-08102-178795	04/14/2017	Phelps	Rolla Rural Fire Protection District	Debris	4.03
2019-08102-178796	04/13/2017	Phelps	Rolla Rural Fire Protection District	Debris	0.02
2019-08102-178804	04/08/2017	Phelps	Rolla Rural Fire Protection District	Debris	1.45
2019-08102-178805	04/08/2017	Phelps	Rolla Rural Fire Protection District	Debris	0.02
2019-08102-178809	03/24/2017	Phelps	Rolla Rural Fire Protection District	Unknown	5.72
2019-08102-178810	03/24/2017	Phelps	Rolla Rural Fire Protection District	Miscellaneous	0.27
2019-08102-178811	03/23/2017	Phelps	Rolla Rural Fire Protection District	Power line	0.17

2019-08102-178812	03/23/2017	Phelps	Rolla Rural Fire Protection District	Unknown	1.34
2019-08102-178813	03/18/2017	Phelps	Rolla Rural Fire Protection District	Equipment	3.02
2019-08102-178814	03/16/2017	Phelps	Rolla Rural Fire Protection District	Debris	0.07
2019-08102-178815	03/16/2017	Phelps	Rolla Rural Fire Protection District	Debris	0.7
2019-08102-178816	03/16/2017	Phelps	Rolla Rural Fire Protection District	Debris	0.1
2019-08102-178817	03/04/2017	Phelps	Rolla Rural Fire Protection District	Miscellaneous	0.46
2019-08102-178818	11/27/2017	Phelps	Rolla Rural Fire Protection District	Debris	0.32
2019-08102-179467	09/16/2019	Phelps	Rolla Rural Fire Protection District	Unknown	
2019-08102-179599	12/04/2019	Phelps	Rolla Rural Fire Protection District	Equipment	0.16
2019-08102-179600	12/09/2019	Phelps	Rolla Rural Fire Protection District	Unknown	0.52
2019-08102-179601	12/11/2019	Phelps	Rolla Rural Fire Protection District	Unknown	0.17
2019-08102-179602	12/12/2019	Phelps	Rolla Rural Fire Protection District	Unknown	7.96
2019-08102-179603	12/12/2019	Phelps	Rolla Rural Fire Protection District	Unknown	0.02
2019-08110-178381	03/26/2019	Phelps	St. James Fire Protection District	Unknown	
2019-08110-178383	03/21/2019	Phelps	St. James Fire Protection District	Debris	0.03
2019-08110-179509	11/20/2019	Phelps	St. James Fire Protection District	Debris	1.52
2019-08110-179510	11/20/2019	Phelps	St. James Fire Protection District	Debris	0.02
2019-08110-179573	12/11/2019	Phelps	St. James Fire Protection District	Miscellaneous	6.64

Source: Missouri Department of Conservation, Fire Report Search, <https://mdc12.mdc.mo.gov/Applications/MDCFIREReporting/Home/FireReportSearch>