

## **Appendix F**

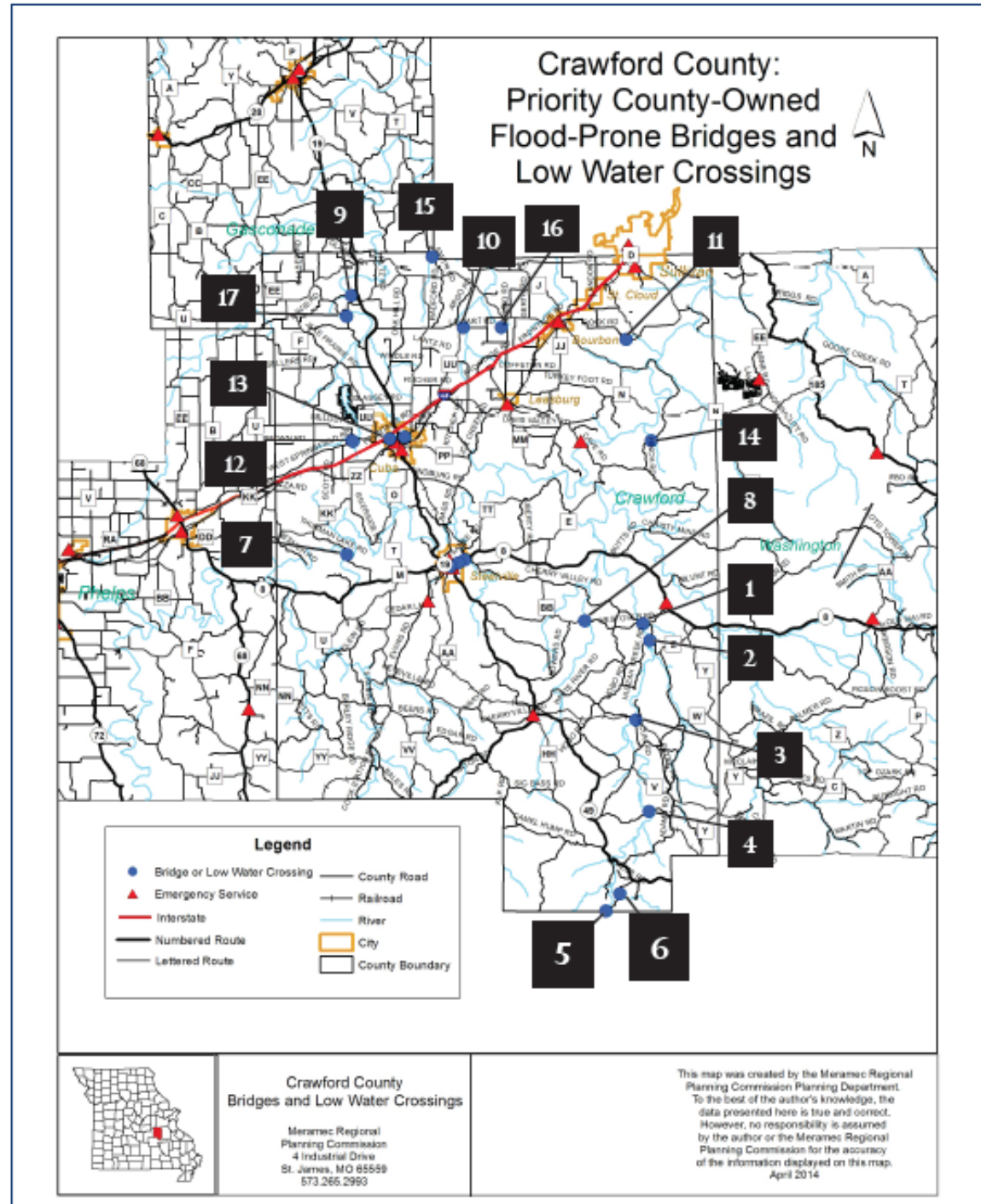
### **Meramec Region**

#### **Priority Low-Water Crossing/Bridge Assessments**

**April 2014**

# —CRAWFORD COUNTY—

## PRIORITY COUNTY-OWNED FLOOD-PRONE BRIDGES AND LOW WATER CROSSINGS



**Bridge 1—**  
On Westover Road  
Crosses Huzzah Creek

**Bridge 2—**  
On Huzzah Creek Road  
Crosses Huzzah Creek

**Bridge 3—**  
On John Coleman Road  
Crosses Huzzah Creek

**Bridge 4—**  
On Sellers Road  
Crosses Huzzah Creek

**Bridge 5—**  
On Willhite Road  
Crosses Huzzah Creek

**Bridge 6—**  
On Willhite Road  
Crosses Crooked Creek

**Bridge 7—**  
On Thurman Lake Road  
Crosses Meramec River

**Bridge 8—**  
On Westover Road  
Crosses Dry Creek

**Bridge 9—**  
On High Point Road  
Crosses Brush Creek

**Bridge 10—**  
On Libhardt Road  
Crosses Little Bourbuese

**Bridge 11—**  
On Rock Road  
Crosses Carter Creek

**Bridge 12—**  
On Springfield Road  
Crosses Indian Hills tributary

**Bridge 13—**  
On Springfield Road  
Crosses Indian Hills tributary

**Bridge 14—**  
On Hinch Road  
Crosses Hinch Creek

**Bridge 15—**  
On Smith Road  
Crosses Three Mile Creek

**Bridge 16—**  
On Ware Road  
Crosses Little Bourbuese tributary

**Bridge 17—**  
On 4 Mile Road  
Crosses Brush Creek tributary

BRIDGE NO.	YEAR BUILT	STRUCTURE TYPE *	TRIBUTARY OR STREAM	LATITUDE	LONGITUDE	ELEVATION (FT)	DATE OF TRAFFIC COUNT	AVERAGE DAILY TRAFFIC	DETOUR TIME (MINUTES)
1	1975	LW-1 Opening	Huzzah Creek	N37.9199667	W091.1689000	696	12/26/13	51	5
2	1980	LW-2 Openings	Huzzah Creek	N37.9067833	W091.1628000	704	12/26/13	56	6
3	1990	LW-1 Opening	Huzzah Creek	N37.84599	W091.17787		11/19/13	73	2
4	1995	LW-1 Opening	Huzzah Creek	N37.77503	W091.16685		11/11/13	37	1
5	1989	LW-Pipe	Huzzah Creek	N37.69888	W091.21053		11/11/13	27	38
6	1980	LW-Pipe	Crooked Creek	N37.71181	W091.19682		11/19/13	36	34
7	1975	LW-Openings	Meramec River	N37.9776333	W091.4566167	750	11/27/13	41	26
8	1987	LW-Pipe	Dry Creek	N37.92331	W091.22568	695	11/27/13	109	11
9	1963	LW-1 Opening	Brush Creek	N38.1773333	W091.4482500	764	01/04/14	90	8
10	1960	LW-Openings	Little Bourbuese	N38.1510833	W091.3390167	816	01/29/14	87	4
11	1947	Slab w/Pipe	Carter Creek	N38.1394833	W091.1801167	730	02/07/14	98	5
12	1955	Slab w/Pipe	Indian Hills trib.	N38.0653500	W091.4500167	895	02/07/14	42	4
13	1955	Slab w/Pipe	Indian Hills trib.	N38.0646667	W091.4490833	913	02/19/14	177	3
14	1950	Concrete Slab	Hinch Creek	N38.0610833	W091.1573667	670	02/19/14	62	16
15	1970	I Beam/Wood Deck	Three Mile Creek	N38.2060667	W091.3683500	747	02/28/14	25	8
16	1975	Slab w/Pipe	Little Bourbuese trib.	N38.1506167	W091.3021833	879	02/28/14	55	Cut Off
17	1949	Slab w/Pipe	Brush creek trib.	N38.1614000	W091.4530000	729	01/29/14	26	16

\* LW= Low Water Crossing

Data Source: MRPC analysis 2012-2014

**MRPC**



---

# CRAWFORD COUNTY BRIDGE PHOTOS

---

**BRIDGE 1**  
*Westover Road*



*Jan. 24, 2014*

**BRIDGE 2**  
*Huzzah Creek Road*



*Jan. 24, 2013*

**BRIDGE 3**  
*John Coleman Road*



*Nov. 19, 2013*

**BRIDGE 4**  
*Sellers Road*



*Nov. 19, 2013*

**BRIDGE 5**  
*Wilhite Road*



*Nov. 19, 2013*

**BRIDGE 6**  
*Wilhite Road*



*Nov. 19, 2013*

**BRIDGE 7**  
*Thurman Lake Road*



*Nov. 25, 2013*

**BRIDGE 8**  
*Westover Road*



*Nov. 25, 2013*

**BRIDGE 9**  
*High Point Road*



*Feb. 13, 2014*

**BRIDGE 10**  
*Libhardt Road*

*Photo Not Available*

**BRIDGE 11**  
*Rock Road*



*March 3, 2014*

**BRIDGE 12**  
*Springfield Road*



*March 3, 2014*

**BRIDGE 13**  
*Springfield Road*



*March 3, 2014*

**BRIDGE 14**  
*Hinch Road*



*March 3, 2014*

**BRIDGE 15**  
*Smith Road*



*March 3, 2014*

**BRIDGE 16**  
*Ware Road*



*March 3, 2014*

**BRIDGE 17**  
*4 Mile Road*

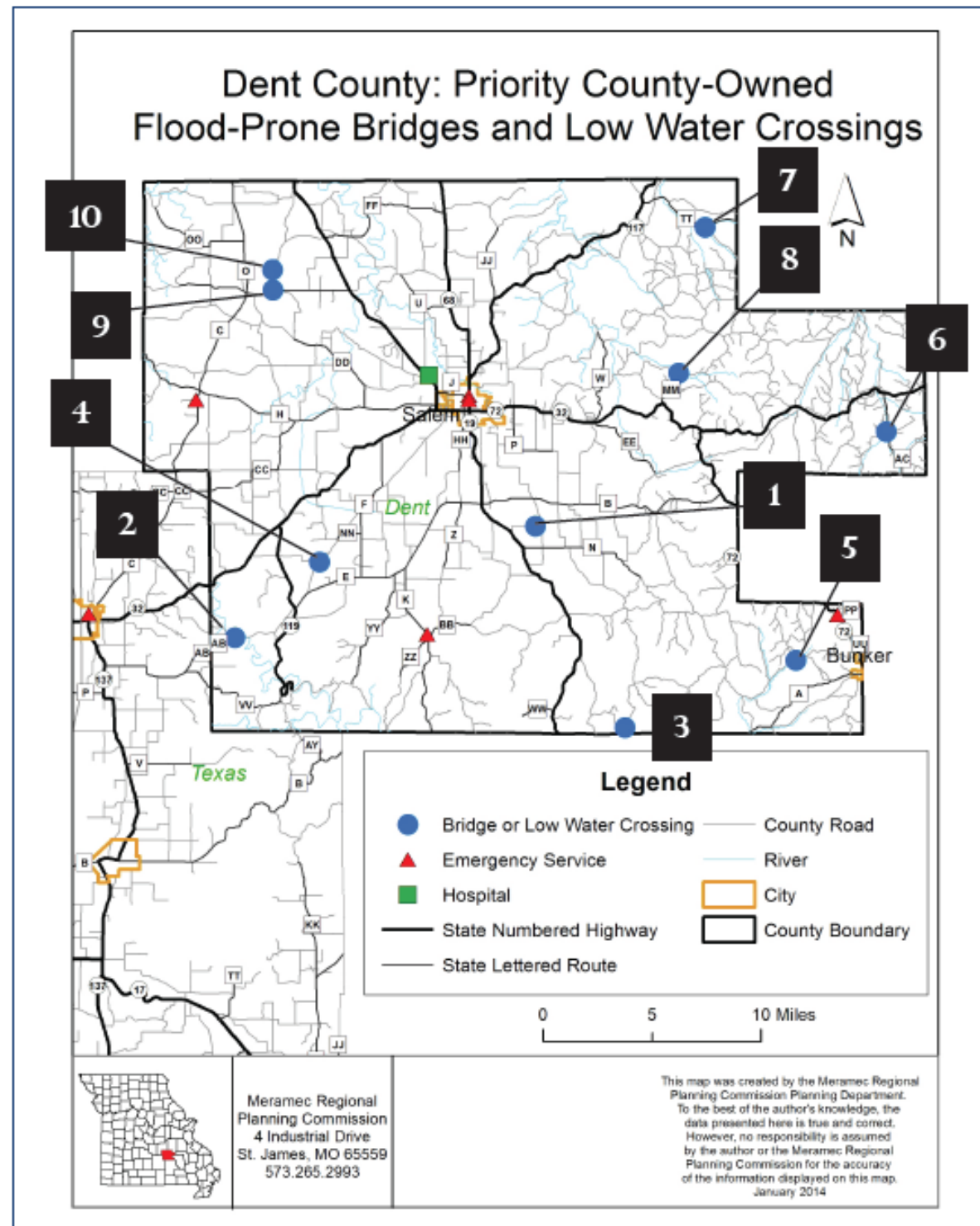


*March 3, 2014*



# —DENT COUNTY—

## PRIORITY COUNTY-OWNED FLOOD-PRONE BRIDGES AND LOW WATER CROSSINGS



**Bridge 1—**  
On County Road 5460  
Crosses a tributary to Dry Valley Creek

**Bridge 2—**  
On County Road 6580  
Crosses Pigeon Creek

**Bridge 3—**  
On County Road 5530  
Crosses Gray Branch

**Bridge 4—**  
On County Road 6470  
Crosses Humes Creek

**Bridge 5—**  
On County Road 5610  
Crosses Gordon Creek

**Bridge 6—**  
On County Road 5300  
Crosses Huzzah Creek

**Bridge 7—**  
On County Road 4030  
Crosses Mid Prong Crooked Creek

**Bridge 8—**  
On County Road 4290  
Crosses Hutchins Creek

**Bridge 9—**  
On County Road 2070  
Crosses Hyer Branch

**Bridge 10—**  
On County Road 2070  
Crosses Hyer Branch

BRIDGE NO.	YEAR BUILT	STRUCTURE TYPE	TRIBUTARY/STREAM	FLOODING FREQUENCY	REPAIR & MAINTENANCE	LATITUDE	LONGITUDE	ELEVATION (FT)	TRAFFIC COUNT DATE	AVERAGE DAILY TRAFFIC	DETOUR TIME (MINUTES)
1	Unk.	Slab	Dry Valley Creek	4	\$1,000	N37.5575167	W091.4821500	1232	12/3/12	34	2-4
2	Unk.	Slab w/CMP	Pigeon Creek	4	\$2,500	N37.4863500	W091.7345167	Unk.	12/20/12	204	6-9
3	Unk.	Slab	Gray Branch	4	\$1,000	N37.4225167	W091.4100167	904	12/12/12	14	6
4	Unk.	Gravel Crossing	Humes Creek	4	\$1,000	N37.5357500	W091.6631000	1228	12/20/12	78	3-6
5	Unk.	Slab w/ Barrels	Gordon Creek	4	\$1,000	N37.4651667	W091.2666667	1041	12/20/12	81	17
6	Unk.	Slab	Huzzah Creek	4	\$1,000	N37.6174000	W091.1874333	1039	12/3/12	171	8
7	Unk.	Slab	Crooked Creek	4	\$1,500	N37.7554167	W091.3358667	1032	11/22/12	75	16-17
8	Unk.	Slab	Hutchins Creek	4	\$1,500	N37.6588833	W091.3602333	1028	11/22/12	85	10
9	Unk.	Slab	Hyer Branch	4	\$1,000	N37.7184500	W091.6987900	1041	10/17/12	33	15
10	Unk.	Slab	Hyer Branch	4	\$1,000	N37.7317167	W091.6988333	1108	10/17/12	25	9

Data Source: MRPC analysis 2012-2014



# DENT COUNTY BRIDGE PHOTOS

**BRIDGE 1**  
CR 5460



Dec. 7, 2012

**BRIDGE 2**  
CR 6580



Dec. 27, 2012

**BRIDGE 3**  
CR 5530



Dec. 7, 2012

**BRIDGE 4**  
CR 6470



Dec. 27, 2012

**BRIDGE 5**  
CR 5610



Dec. 7, 2012

**BRIDGE 6**  
CR 5300



Dec. 7, 2012

**BRIDGE 7**  
CR 4030



Nov. 16, 2012

**BRIDGE 8**  
CR 4290



Nov. 16, 2012

**BRIDGE 9**  
CR 2070



Oct. 10, 2012

**BRIDGE 10**  
CR 2070



Oct. 10, 2012



# — GASCONADE COUNTY —

## PRIORITY COUNTY-OWNED FLOOD-PRONE BRIDGES AND LOW WATER CROSSINGS

### Bridge 1—

On County Road 404/Valentine Ford  
Crosses Third Creek



Photo taken Apr. 24, 2012

### Bridge 2—

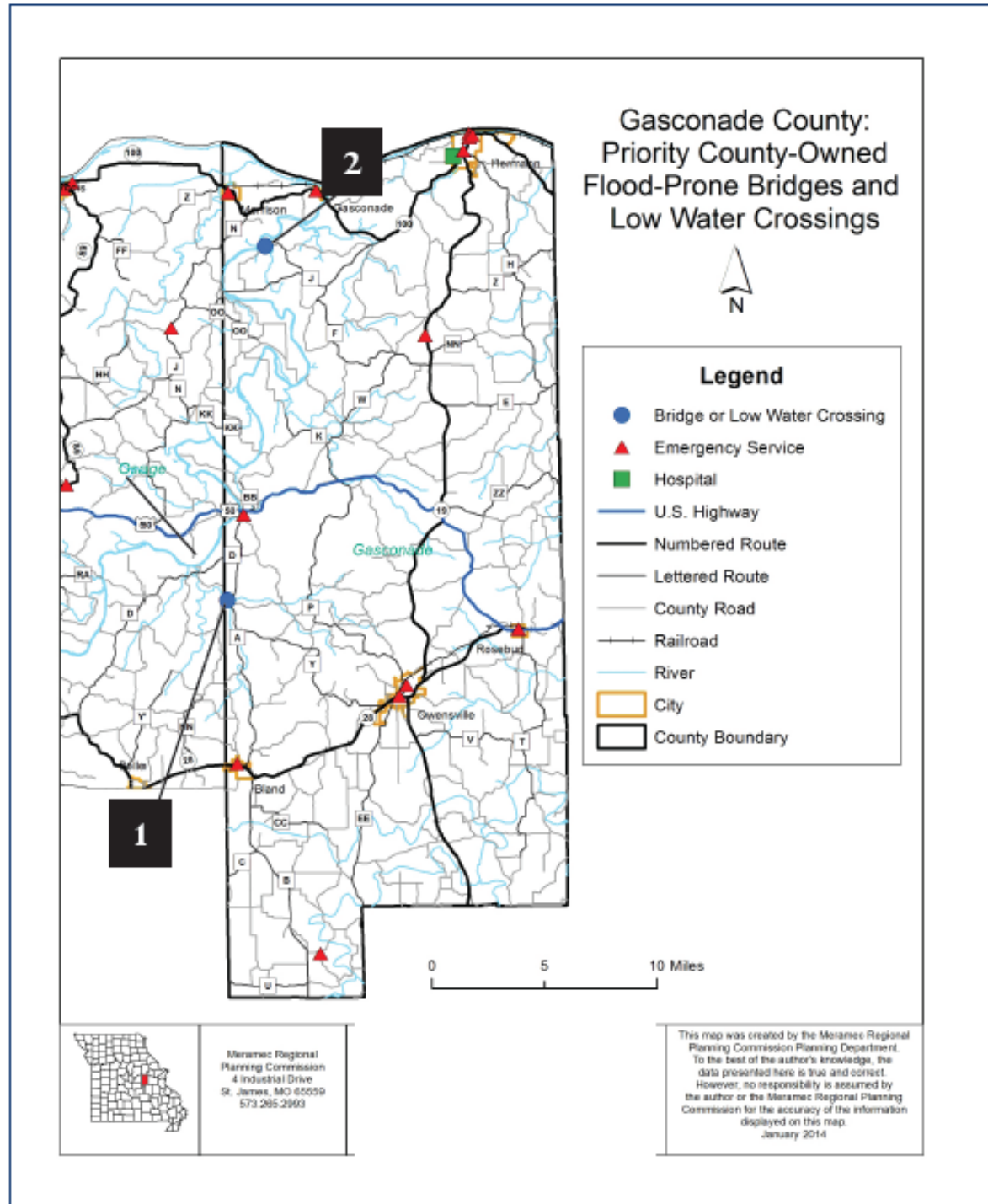
On County Road 6580  
Crosses Pigeon Creek



Photo taken May 23, 2012

BRIDGE NO.	YEAR BUILT		STRUCTURE TYPE	TRIBUTARY/STREAM	FLOODING FREQUENCY		REPAIR & MAINTENANCE	LATITUDE	LONGITUDE	ELEVATION (FT)	TRAFFIC COUNT DATE	AVERAGE DAILY TRAFFIC		DETOUR TIME (MINUTES)
1	1943		Low Water	Third Creek	6	\$1,000		N38.4093667	W091.6414333	586	NA	NA		10
2	Unk		Box Culvert	Sugar Creek	6	\$2,500		N38.6364667	W091.6058500	499	8/23/12	55		10

Data Source: MRPC analysis 2012-2014



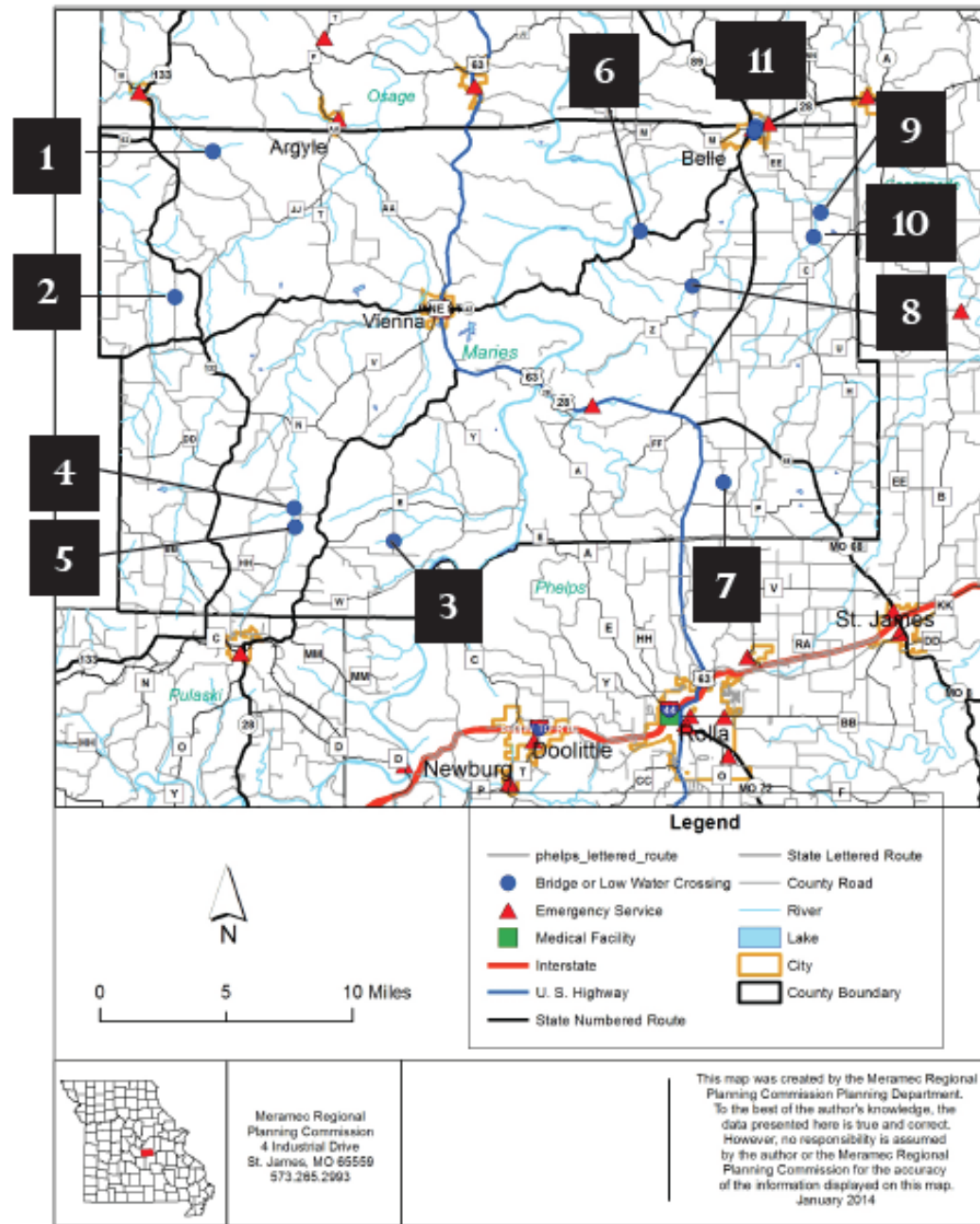
**MRPC**



# —MARIES COUNTY—

## PRIORITY COUNTY-OWNED FLOOD-PRONE BRIDGES AND LOW WATER CROSSINGS

Maries County: Priority County-Owned Flood-Prone Bridges and Low Water Crossings



**Bridge 1—**  
On Maries Road 205  
Crosses Sugar Creek

**Bridge 2—**  
On Maries Road 219

**Bridge 3—**  
On Maries Road 505  
Crosses Montague Creek

**Bridge 4—**  
On Maries Road 621  
Crosses Maries River

**Bridge 5—**  
On Maries Road 621  
Crosses a tributary to the Maries River

**Bridge 6—**  
On Maries Road 311  
Crosses Mill Spring

**Bridge 7—**  
On Maries Road 442

**Bridge 8—**  
On Maries Road 317  
Crosses Dry Fork

**Bridge 9—**  
On Maries Road 408  
Crosses Lower Peavine

**Bridge 10—**  
On Maries Road 409  
Crosses Lower Peavine

**Bridge 11—**  
On Fifth Street in Belle  
Crosses an unnamed creek

BRIDGE NO.	YEAR BUILT	STRUCTURE TYPE	TRIBUTARY/STREAM	FLOODING FREQUENCY	REPAIR & MAINTENANCE	LATITUDE	LONGITUDE	ELEVATION (FT)	TRAFFIC COUNT DATE	AVERAGE DAILY TRAFFIC	DETOUR TIME (MINUTES)
1	Unk.	Low Water Slab	Sugar Creek			N38.2774833	W092.1142667	674	09/18/13	14	2-4
2	Unk.	Low Water Slab				N38.2046833	W092.1412000	767	09/18/13	23	6-9
3	Unk.	Low Water Slab	Montague Creek			N38.0535667	W091.9844667	811	10/14/13	79	6
4	Unk.	Low Water Slab	Maries River			N38.06212	W092.05604		10/24/13	57	3-6
5	Unk.	Low Water Slab	Maries River trib.			N38.060060	W092.056080		10/24/13	57	17
6	Unk.	Low Water Slab	Mill Spring			N38.2295833	W091.8022833	582	09/26/13	26	8
7	Unk.	Low Water Slab				N38.0847667	W091.7443500	987	10/14/13	15	16-17
8	Unk.	Low Water Slab	Dry Fork			N38.1981167	W091.7649833	974	09/26/13	95	10
9	Unk.	Low Water Slab	Lower Peavine			N38.2386167	W091.6706500	744	10/04/13	34	15
10	Unk.	Low Water Slab	Lower Peavine			N38.2248833	W091.6762333	817	10/04/13	69	9

Data Source: MRPC analysis 2012-2014



# MARIES COUNTY BRIDGE PHOTOS

**BRIDGE 1**  
Maries Road 205



Oct. 3, 2013

**BRIDGE 2**  
Maries Road 219



Oct. 3, 2013

**BRIDGE 3**  
Maries Road 505



Oct. 9, 2013

**BRIDGE 4**  
Maries Road 621



Oct. 18, 2013

**BRIDGE 5**  
Maries Road 621

*Photo Not Available*

Oct. 18, 2013

**BRIDGE 6**  
Maries Road 311



Oct. 3, 2013

**BRIDGE 7**  
Maries Road 442



Oct. 9, 2013

**BRIDGE 8**  
Maries Road 317



Oct. 3, 2013

**BRIDGE 9**  
Maries Road 408



Oct. 9, 2013

**BRIDGE 10**  
Maries Road 409



Oct. 9, 2013

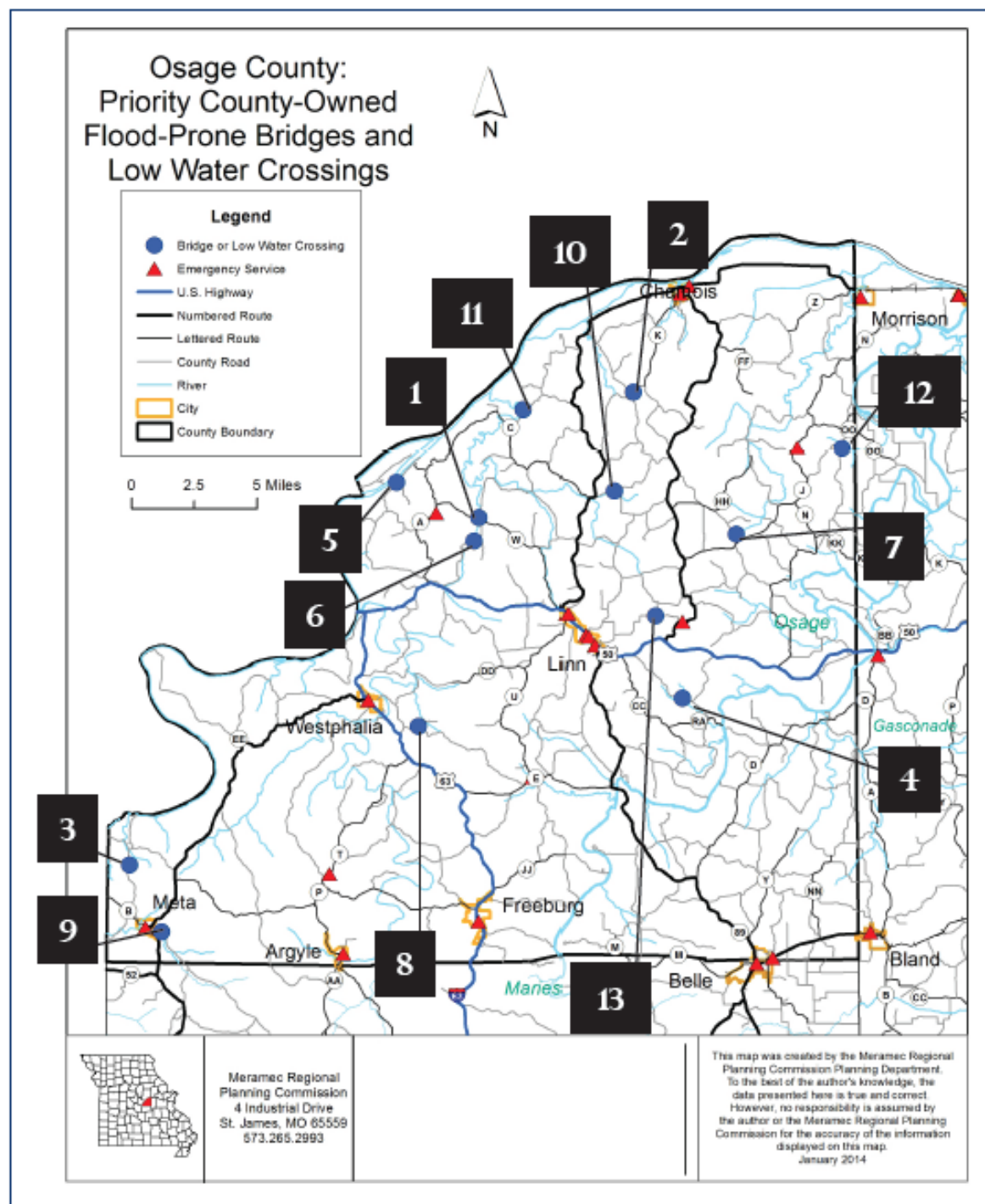
**BRIDGE 11**  
Fifth Street—Belle





# —OSAGE COUNTY—

## PRIORITY COUNTY-OWNED FLOOD-PRONE BRIDGES AND LOW WATER CROSSINGS



**Bridge 1—**  
On County Road 424  
Crosses Loose Creek Branch

**Bridge 2—**  
On County Road 317  
Crosses Deer Creek Branch

**Bridge 3—**  
On County Road 508  
Crosses Profits Creek

**Bridge 4—**  
On County Road 801  
Crosses N. Fork of Pointers Creek

**Bridge 5—**  
On County Road 412  
Crosses Luzon Creek

**Bridge 6—**  
On County Road 403  
Crosses Loose Creek

**Bridge 7—**  
On County Road 232  
Crosses Bailey's Creek tributary

**Bridge 8—**  
On County Road 612  
Crosses Bear Creek

**Bridge 9—**  
On County Road 542  
Crosses Sugar Creek

**Bridge 10—**  
On County Road 312  
Crosses Luystown Creek

**Bridge 11—**  
On County Road 432  
Crosses Darrow Branch

**Bridge 12—**  
On County Road 241  
Crosses Richland Creek tributary

**Bridge 13—**  
On County Road 302

BRIDGE NO.	YEAR BUILT	STRUCTURE TYPE	TRIBUTARY/STREAM	FLOODING FREQUENCY	REPAIR & MAINTENANCE	LATITUDE	LONGITUDE	ELEVATION (FT)	TRAFFIC COUNT DATE	AVERAGE DAILY TRAFFIC	DETOUR TIME (MINUTES)
1	Unk.	Pipe	Loose Creek Branch	5	\$3,000	N38.5467500	W091.9181667	558	01/23/13	379	14
2	Unk.	Slab	Deer Creek Branch	6		N38.6181333	W091.8042833	541	02/01/13	99	13
3	Unk.	Slab	Profits Creek	6	\$2,500	N38.3480167	W091.1778333	647	02/21/13	108	4
4	Unk.	Slab	N. Fork Pointers	6	\$1,000	N38.4409500	W091.7712167	612	08/27/10	92	7
5	Unk.	Bridge	Luzon Creek	4		N38.5677500	W091.9784000	535	02/13/13	63	2
6	Unk.	Slab	Loose Creek	6	\$3,000	N38.5334000	W091.9219000	581	02/13/13	162	10
7	Unk.	Bridge	Bailey's Creek trib.			N38.5353167	W091.7299667	785	01/15/13	92	10
8	Unk.	Slab	Bear Creek	6		N38.4265500	W091.9643500	613	03/14/13	533	18
9	Unk.	Bridge	Sugar Creek	6	\$2,000	N38.3092000	W091.1547167	625	02/21/13	131	12
10	Unk.	Low Water	Luystown Creek		\$6,000	N38.5612000	W091.8192500	645	08/17/10	37	9
11	Unk.	Bridge	Darrow Branch	1		N38.6089167	W091.8843335	527	02/01/13	130	15
12	Unk.	Low Water	Richland Creek trib.	2	\$3,000	N38.5839833	W091.6512833	547	01/15/13	321	10
13	Unk.	Low Water		2	\$3,000	N38.4886667	W091.7902333	783	01/23/13	165	6

Data Source: MRPC analysis 2012-2014

**MRPC**



# OSAGE COUNTY BRIDGE PHOTOS

**BRIDGE 1**  
CR 424



Feb. 8, 2013

**BRIDGE 2**  
CR 317



Feb. 8, 2013

**BRIDGE 3**  
CR 508



March 1, 2013

**BRIDGE 4**  
CR 801



Jan. 9, 2013

**BRIDGE 5**  
CR 412



Feb. 8, 2013

**BRIDGE 6**  
CR 403



Feb. 8, 2013

**BRIDGE 7**  
CR 232



Jan. 18, 2013

**BRIDGE 8**  
CR 612



March 7, 2013

**BRIDGE 9**  
CR 542



March 1, 2013

**BRIDGE 10**  
CR 312



Jan. 18, 2013

**BRIDGE 12**  
CR 241



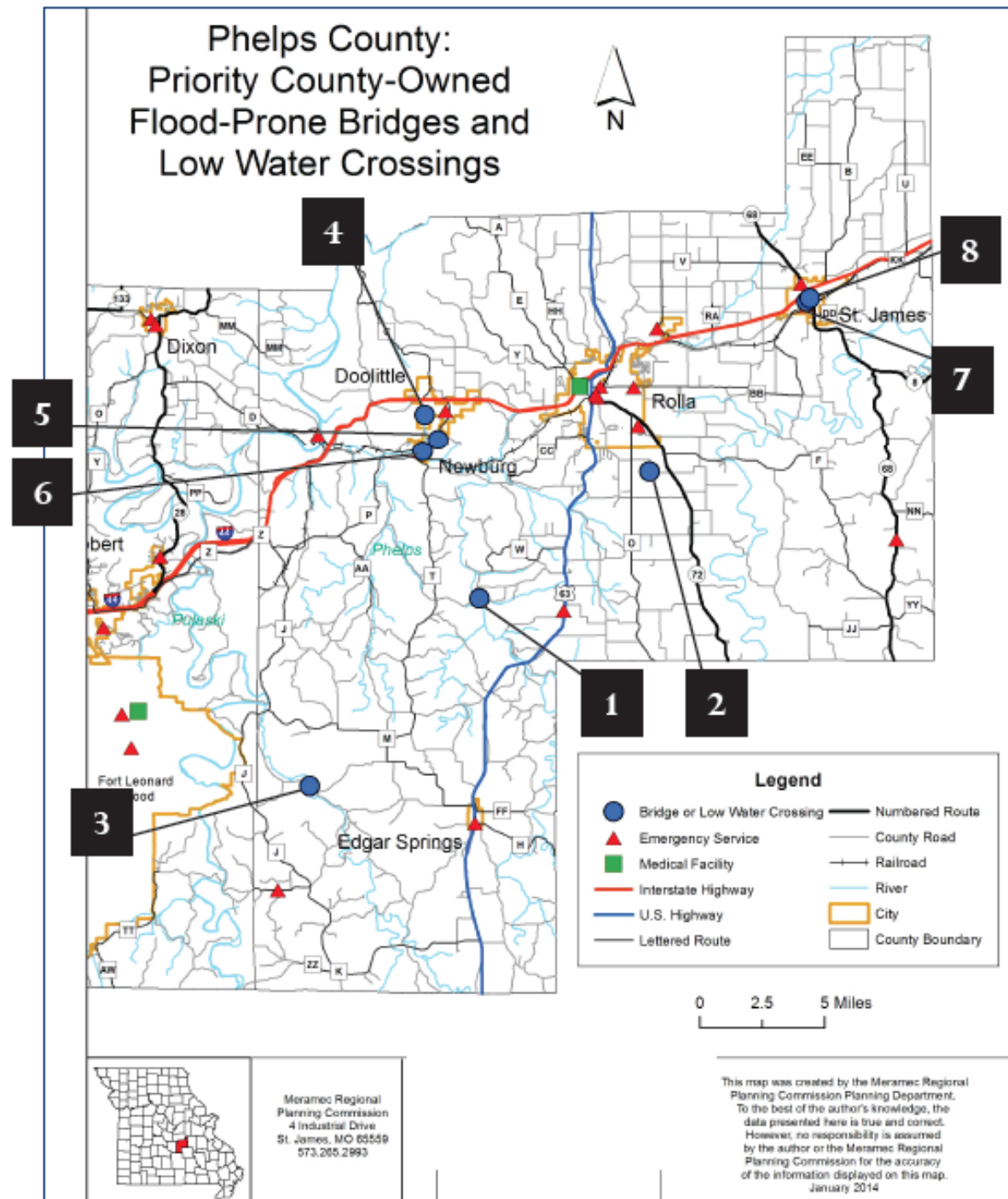
Jan. 9, 2013

*Photo Not Available  
for bridges eleven and  
thirteen*



# —PHELPS COUNTY—

## PRIORITY COUNTY-OWNED FLOOD-PRONE BRIDGES AND LOW WATER CROSSINGS



**Bridge 1—**  
On County Road 7460 in Vida  
Crosses Little Piney

**Bridge 2—**  
On County Road 5120  
Crosses Little Dry Fork

**Bridge 3—**  
On County Road 6410  
Crosses Spring Creek

**Bridge 4—**  
On MacArthur Street in Doolittle  
Crosses a Little Piney tributary

**Bridge 5—**  
On East Fourth Street in Newburg  
Crosses Newburg Creek

**Bridge 6—**  
On Water Street in Newburg  
Crosses Newburg Creek

**Bridge 7—**  
On Meramec Street in St. James

**Bridge 8—**  
On Walters Street in St. James

BRIDGE NO.	YEAR BUILT	STRUCTURE TYPE	TRIBUTARY/STREAM	LATITUDE	LONGITUDE	ELEVATION (FT)	TRAFFIC COUNT DATE	AVERAGE DAILY TRAFFIC	DETOUR TIME (MINUTES)
1	1900	Low Water	Little Piney	N37.8284500	W91.8615200	842	10/26/12	81	5
2	1900	Low Water	Little Dry Fork	N37.9009500	W91.7351833	969	01/03/13	59	1
3	1900	Low Water	Spring Creek	N37.7207333	W91.9872167	781	11/09/12	36	17
4		Culvert-Slab	Little Piney tributary	N37.9366000	W91.8998000		12/31/12	203	5
5	2010		Newburg Creek	N37.9158333	W91.6180167	751	08/13/12	25	2
6		Low Water	Newburg Creek	N37.9148000	W91.9013667	711	08/13/12	221	1
7	1946	Box Culvert		N37.9994333	W91.6180167	1031	08/31/12	828	
8	1965	Bridge		N38.0013833	W91.6155833	1090	08/31/12	716	1



# --- PHELPS COUNTY BRIDGE PHOTOS ---

**BRIDGE 1**  
CR 7460



Nov. 13, 2012

**BRIDGE 2**  
CR 5120



Nov. 13, 2012

**BRIDGE 3**  
CR 6410



Nov. 13, 2012

**BRIDGE 4**  
MacArthur Street—Doolittle



Dec. 31, 2012

**BRIDGE 5**  
East Fourth Street—Newburg



Aug. 7, 2012

**BRIDGE 6**  
Water Street—Newburg



Aug. 7, 2012

**BRIDGE 7**  
Meramec Street—St. James



April 23, 2012

**BRIDGE 8**  
Walters Street—St. James

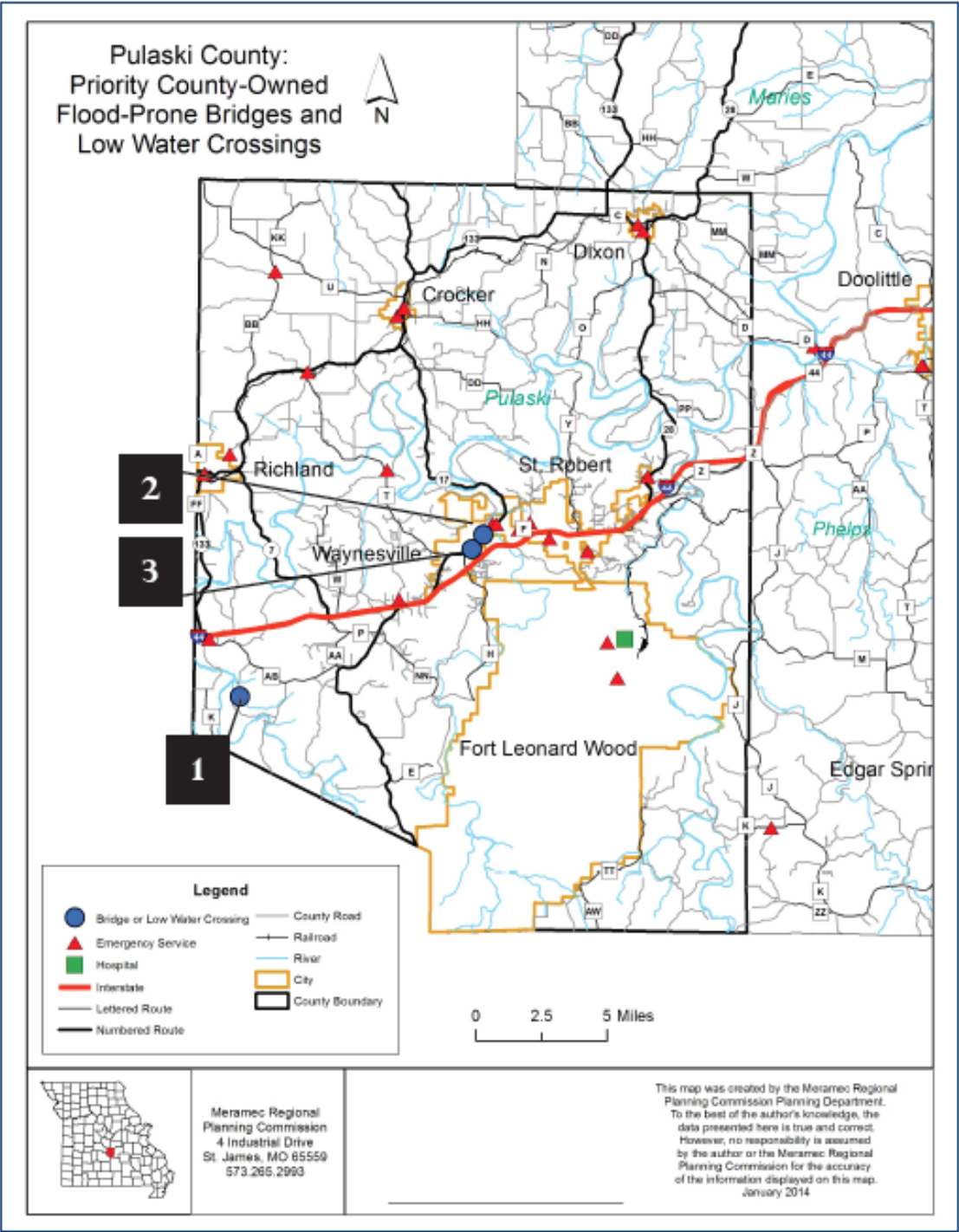


April 23, 2012



# — PULASKI COUNTY —

## PRIORITY COUNTY-OWNED FLOOD-PRONE BRIDGES AND LOW WATER CROSSINGS



**Bridge 1—**  
On Southbend Road  
Crosses an unnamed creek



Photos taken May 7, 2012

**Bridge 2—**  
On Dyer Street—Waynesville  
Crosses Mitchell Creek



Photos taken May 7, 2012

**Bridge 3—**  
On Old Highway H—Waynesville  
Crosses Mitchell Creek



Photos taken May 7, 2012

BRIDGE NO.	YEAR BUILT		STRUCTURE TYPE	TRIBUTARY/STREAM	FLOODING FREQUENCY		REPAIR & MAINTENANCE	LATITUDE	LONGITUDE	ELEVATION (FT)	TRAFFIC COUNT DATE	AVERAGE DAILY TRAFFIC	DETOUR TIME (MINUTES)
1	1970		Culvert Slab	Unnamed creek				N37.7352000	W92.3805500	913			8
2			LW-Cement	Mitchell Creek				N37.8235333	W92.2099833	802	09/14/12	377	2
3			LW-Cement	Mitchell Creek				N37.8156833	W092.2181833	828	09/14/12	1798	5

\* LW= Low Water Crossing

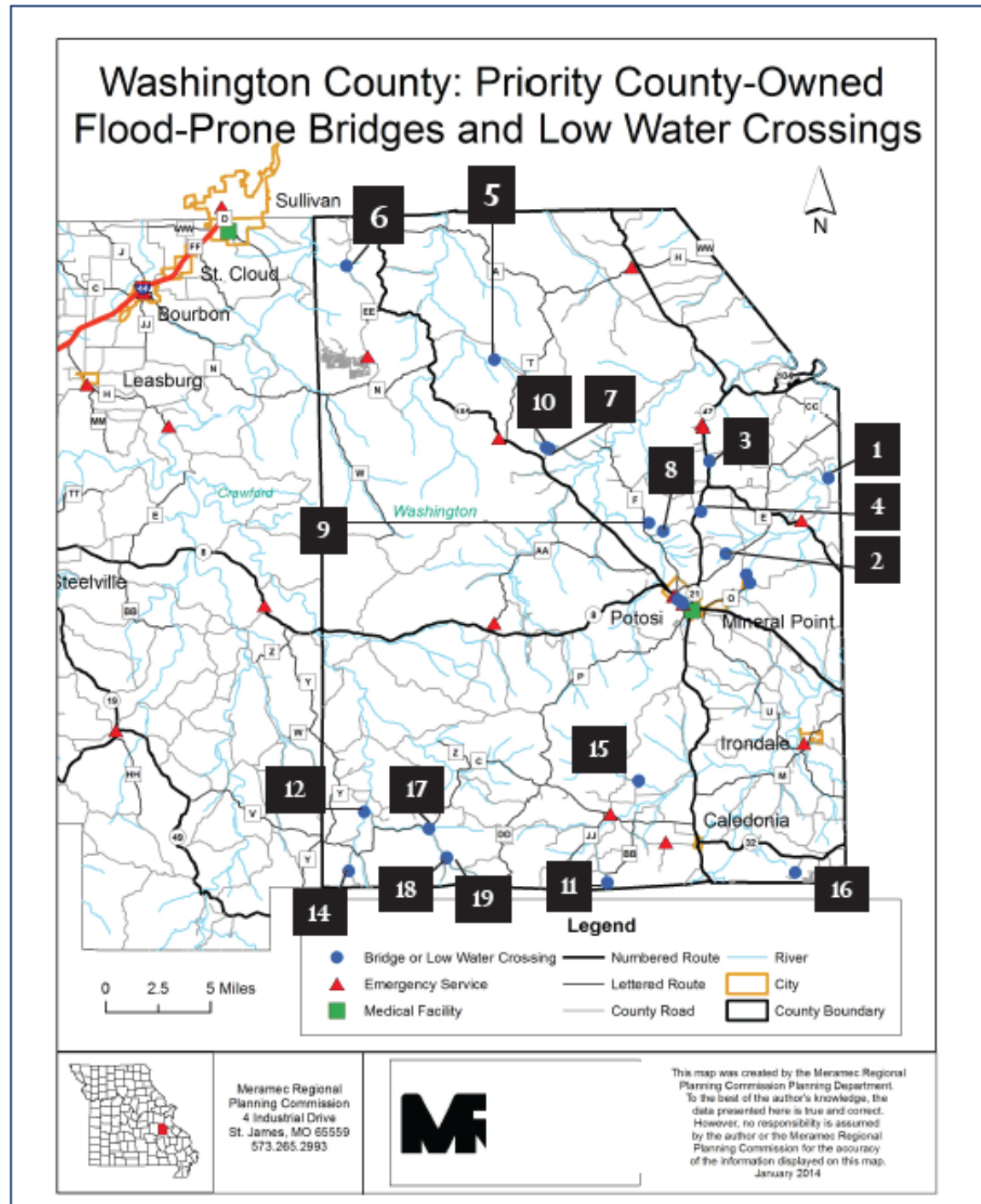
Data Source: MRPC analysis 2012-2014





# —WASHINGTON COUNTY—

## PRIORITY COUNTY-OWNED FLOOD-PRONE BRIDGES AND LOW WATER CROSSINGS



**Bridge 1—**  
On Tiff Road 408  
Crosses Mill Creek

**Bridge 2—**  
On Radio Station Road 418  
Crosses Keyes Branch

**Bridge 3—**  
On Settles Hollow Road 437  
Crosses Old Mines Creek

**Bridge 4—**  
On Thomlinson Road  
Crosses Old Mines Creek

**Bridge 5—**  
On Goose Creek Road 303  
Crosses Pinery Creek

**Bridge 6—**  
On Hamilton Hollow Road 202  
Crosses Hamilton Creek

**Bridge 7—**  
On Lick Skillet Road 320  
Crosses Pucket Branch

**Bridge 8—**  
On Simpson Road 334

**Bridge 9—**  
On Duncan Road 343  
Crosses Mine Au Breton tributary

**Bridge 10—**  
On Pelican Ridge Road 304  
Crosses Pucket Branch

**Bridge 11—**  
On Robinson Road  
Crosses James Creek

**Bridge 12—**  
On Bailey Branch Road 664  
Crosses Courtois River

**Bridge 13—**  
On Bailey Branch Road 664

**Bridge 14—**  
On Wells Road 652  
Crosses Indian Creek

**Bridge 15—**  
On King Road 622  
Crosses Clear Creek

**Bridge 16—**  
On Carr Road 535  
Crosses Lost Creek

**Bridge 17—**  
On Cubb Creek Road 650  
Crosses Cubb Creek

**Bridge 18—**  
On Cubb Creek Road 650  
Crosses Cubb Creek tributary

**Bridge 19—**  
On Keith Cemetery Road  
Crosses Cubb Creek

BRIDGE NO.	YEAR BUILT	STRUCTURE TYPE *	TRIBUTARY OR STREAM	LATITUDE	LONGITUDE	ELEVATION (FT)	DATE OF TRAFFIC COUNT	AVERAGE DAILY TRAFFIC	DETOUR TIME (MINUTES)
1		LW-Cement	Mill Creek	N38.0154333	W090.6506333	720	05/16/13	257	9
2		LW-Cement	Keyes Branch	N37.9645833	W090.37419500	940	05/16/13	324	
3		Concrete	Old Mines Creek	N38.0291333	W090.7543667	736	05/08/13	232	11
4		Concrete	Old Mines Creek	N37.9945200	W090.7627500				Cut Off
5		Concrete	Pinery Creek	N38.1028000	W090.9395667	744	04/18/13	95	10
6		Concrete	Hamilton Creek	N38.1697833	W091.0672883	634	07/25/13	83	11
7		Concrete	Pucket Branch	N38.0400167	W090.8943000	808	04/18/13	218	37
8		Concrete		N37.9812167	W090.7967667	839	07/25/13	278	8
9		Concrete	Mine Au Breton trib.	N37.9871700	W090.8089500		04/18/13	116	Cut Off
10		Concrete	Pucket Branch	N38.0412833	W090.8973833	833	05/08/13	344	13
11	1985	Concrete	James Creek	N37.738933	W090.8525500	964	08/30/13	60	Cut Off
12	1989	Concrete	Courtois River	N37.7917000	W091.0618667	884	06/20/13	60	8
13	1993	Concrete							
14	1990	Concrete	Indian Creek	N37.7508333	W0910764833	1300	06/20/13	19	Cut Off
15	1965	Concrete	Clear Creek	N37.8089333	W090.8223000	865	07/10/13	136	Negligible
16	1970	Concrete	Lost Creek	N37.7427667	W090.6884000	918	07/10/13	12	Cut Off
17		Concrete	Cubb Creek	N37.7789167	W091.0057667	942	08/02/13	110	8
18		Concrete	Cubb Creek trib.	N37.7588500	W090.9905833	978	08/02/13	27	5
19		Concrete	Cubb Creek	N37.7582500	W090.9908167	1013	08/02/13	27	5

\* LW= Low Water Crossing

Data Source: MRPC analysis 2012-2014





# WASHINGTON COUNTY BRIDGE PHOTOS

**BRIDGE 1**  
Tiff Road 408



Oct. 3, 2013

**BRIDGE 2**  
Radio Station Road 418



Oct. 3, 2013

**BRIDGE 3**  
Settles Hollow Road 437



Oct. 3, 2013

**BRIDGE 4**  
Thomlinson Road



Oct. 3, 2013

**BRIDGE 5**  
Goose Creek Road 303



Oct. 3, 2013

**BRIDGE 6**  
Hamilton Hollow Road



Oct. 3, 2013

**BRIDGE 7**  
Lick Skillet Road 320



Oct. 3, 2013

**BRIDGE 8**  
Simpson Road 334



Oct. 3, 2013

**BRIDGE 9**  
Duncan Road 343



Oct. 3, 2013

**BRIDGE 10**  
Pelican Ridge Road 304



July 1, 2013

**BRIDGE 11**  
Robinson Road



Oct. 3, 2013

**BRIDGE 12**  
Bailey Branch Road 664



Oct. 3, 2013

**BRIDGE 13**  
Bailey Branch Road 664

Photo Not Available

**BRIDGE 14**  
Wells Road 652



Oct. 3, 2013

**BRIDGE 15**  
King Road 622



Oct. 3, 2013

**BRIDGE 16**  
Carr Road 535



Oct. 3, 2013

**BRIDGE 17**  
Cubb Creek Road 650



Oct. 3, 2013

**BRIDGE 18**  
Cubb Creek Road 650



Oct. 3, 2013

**BRIDGE 19**  
Keith Cemetery Road



Oct. 3, 2013