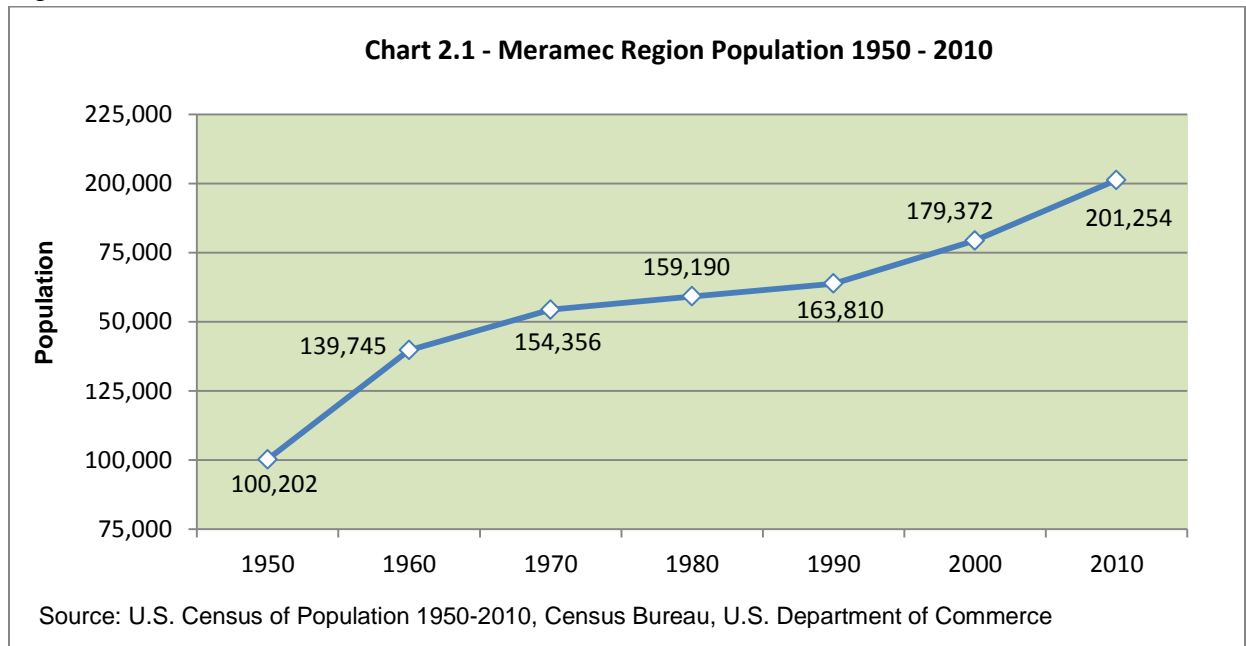


CHAPTER TWO: TRENDS AND CONDITIONS

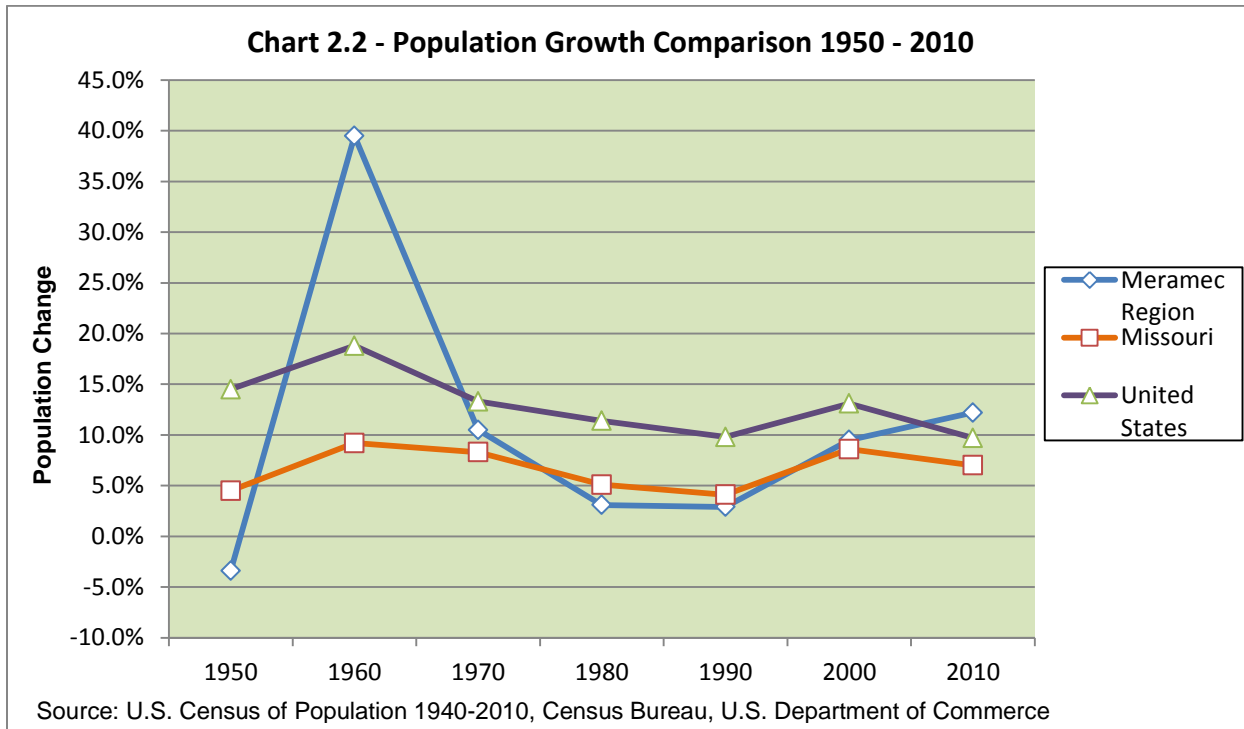
2.1 Population Characteristics

Population Trends

The Meramec Region is made up of eight counties (Crawford, Dent, Gasconade, Maries, Osage, Phelps, Pulaski and Washington) located in southeast-central Missouri, covering 5,131 square miles. The region is currently home to some 201,254 people, according to the 2010 census. Since 1950, the population of the region has grown by over 100 percent, from 100,202 people in 1950 to 201,254 people in 2010; an increase of 101,052. Chart 2.1 below shows the population growth for the region from 1950 to 2010. The region as a whole showed marked growth of 39.5 percent between 1950 and 1960. The region's combined population increased at over twice the rate, of the nation's population and four times the rate of the state during that timeframe. This rapid growth is largely attributed to the United States Army's response to the Korean conflict and the subsequent reactivation, as a military replacement training center, of the nearly abandoned U.S. Army post Fort Leonard Wood, located within Pulaski County. Pulaski County saw an astounding 348 percent increase in population during this period. However, county growth slowed considerably in the region from 1970 to 1990, with revived growth during the 20-year period of 1990-2010 with nearly an 11 percent average increase in population with each census. Table 2.1, located at the end of this chapter, indicates the general population statistics for the United States, the state of Missouri, the Meramec Region and the eight counties within the region.



Regional growth revived from 1990 to 2000 showing a marked increase of 9.5 percent –a higher pace than that of the state at 8.6 percent, but lower than the national level of 13.1 percent. Steady regional growth continued from 2000 to 2010 marking a rate of 12.2 percent – a higher pace than both the state and national levels of 7 percent and 9.7 percent respectively. Chart 2-2 below provides a visual comparison of population growth among the region, state and nation from 1950 to 2010.



1990 - 2000

In the Meramec Region, from 1990-2000, seven of the eight counties had increases in population. According to Census 2000 data, Pulaski County showed a slight decrease of 0.3 percent, but continued to show growth in its urban communities. By 2000, 15 Meramec cities had declined in population and 18 communities had increased, with the community of Meta remaining the same. Eleven communities had growth rates of over 10 percent: St. Robert showed the largest increase at 59.5 percent. The largest population decrease occurred in Morrison, with a decrease of 23.1 percent of its population.

The greatest county growth in population occurred in Crawford County (18.9 percent), followed by Washington County (14.5 percent). The most significant growth in population for the Meramec Region occurred along Interstate 44: Cuba (27.3 percent), Rolla (16.2 percent), St. James (13.8 percent), Bourbon (13.5 percent), Sullivan (12.2 percent) and St. Robert (59.5 percent). Other communities, with a population greater than 1,000, that showed a significant increase were Belle (10.3 percent) and Linn (17.9 percent). Of the communities with a

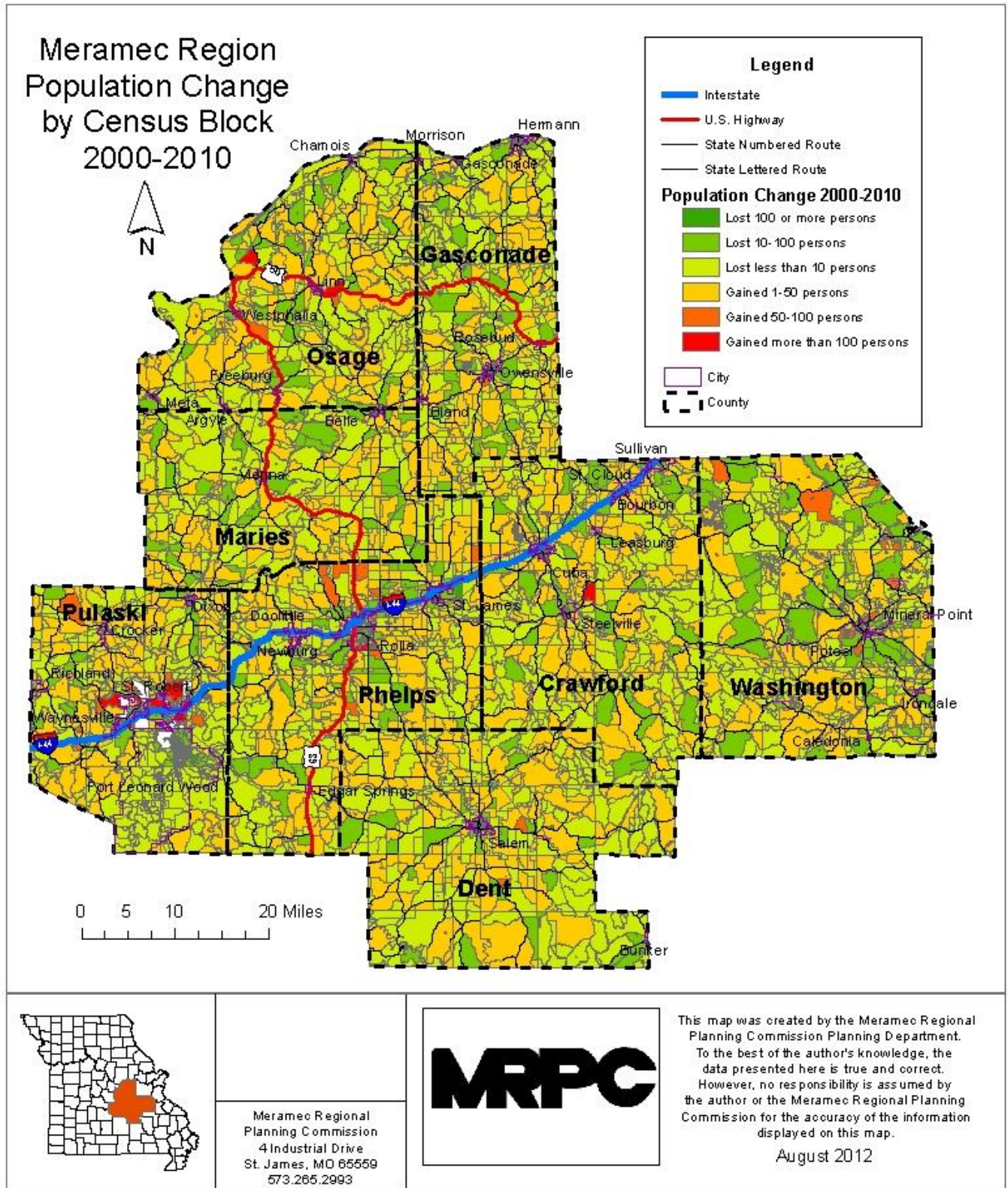
population less than 1,000, the most significant growth occurred in Leasburg (11.8 percent), Westphalia (11.5 percent) and Caledonia (11.3 percent). The communities with the greatest decline in population were, Morrison (-23.1 percent), Newburg (-17.8 percent), Bland (-13.2 percent) and Edgar Springs (-11.6 percent).

2000 - 2010

From 2000 – 2010, seven of the eight counties within the region showed increased populations. According to Census 2010 data, Gasconade County had a decrease of 0.8 percent. By 2010, 12 Meramec cities had declined in population and 23 communities had increased. Ten communities had growth rates of over 10 percent: St. Robert again showed the largest increase with 57.2 percent. The largest population decrease occurred in Caledonia, with a 17.7 percent decrease of its population. West Sullivan was incorporated as a village in 2000. The population according to Census 2010 data was 119 residents. Figure 2.1 on the following page illustrates the population change from Census 2000 to Census 2010.

The greatest county growth in population occurred in Pulaski County (27 percent) which tied Pulaski with St. Charles County as the fifth fastest growing county in Missouri. Pulaski was followed by Phelps County (13.4 percent) showing the second largest population growth in the region during the period. Again, the most significant growth in population for the Meramec Region occurred along Interstate 44: Rolla (19.5 percent), St. James (13.8 percent), Bourbon (21.1 percent), Sullivan (11.5 percent), Waynesville (37.7 percent) and St. Robert (57.2 percent). Other communities, with a population greater than 1,000 that showed a significant increase were Belle (15 percent) and Steelville (14.9 percent). Of the communities with a population less than 1,000, the most significant growth occurred in Rosebud (12.4 percent), Morrison (13 percent) and Westphalia (21.6 percent). The communities with the greatest decline in population were, Chamois (-13.2 percent), Gasconade (-16.5 percent) and Caledonia (-17.7 percent).

Map 2.1



Population Density

Population density is the number of people per unit of area usually per square mile (which may include or exclude bodies of water) simply, population density provides comparable information on how densely populated an area is. Commonly population density is calculated for a county, city, country or the entire world. For the purpose of this document, population density is calculated by utilizing the 2010 Census population data and land area, in square miles or fraction thereof, of each jurisdiction minus measurable bodies of water located within that jurisdiction. It is important to note that the resulting population density of a jurisdiction may be higher than that of the population. The following examples are included to ensure complete understanding of population density.

Example 1: The City of Dixon has 1.01 square miles of land area and a 2010 Census population of 1,549 people, the population density of Dixon equals 1,533.7 people per square mile ($1,549 \text{ people} / 1.01 \text{ square miles} = 1,533.7 \text{ people per square mile}$).

Example 2: The City of Gasconade has 0.20 square miles of land area and a 2010 Census population of 223 people, the population density of Gasconade equals 1,115 people per square mile ($223 \text{ people} / 0.20 \text{ square mile} = 1,115 \text{ people per square mile}$).

Summary: Based on the examples above; Dixon has a higher population density than Gasconade.

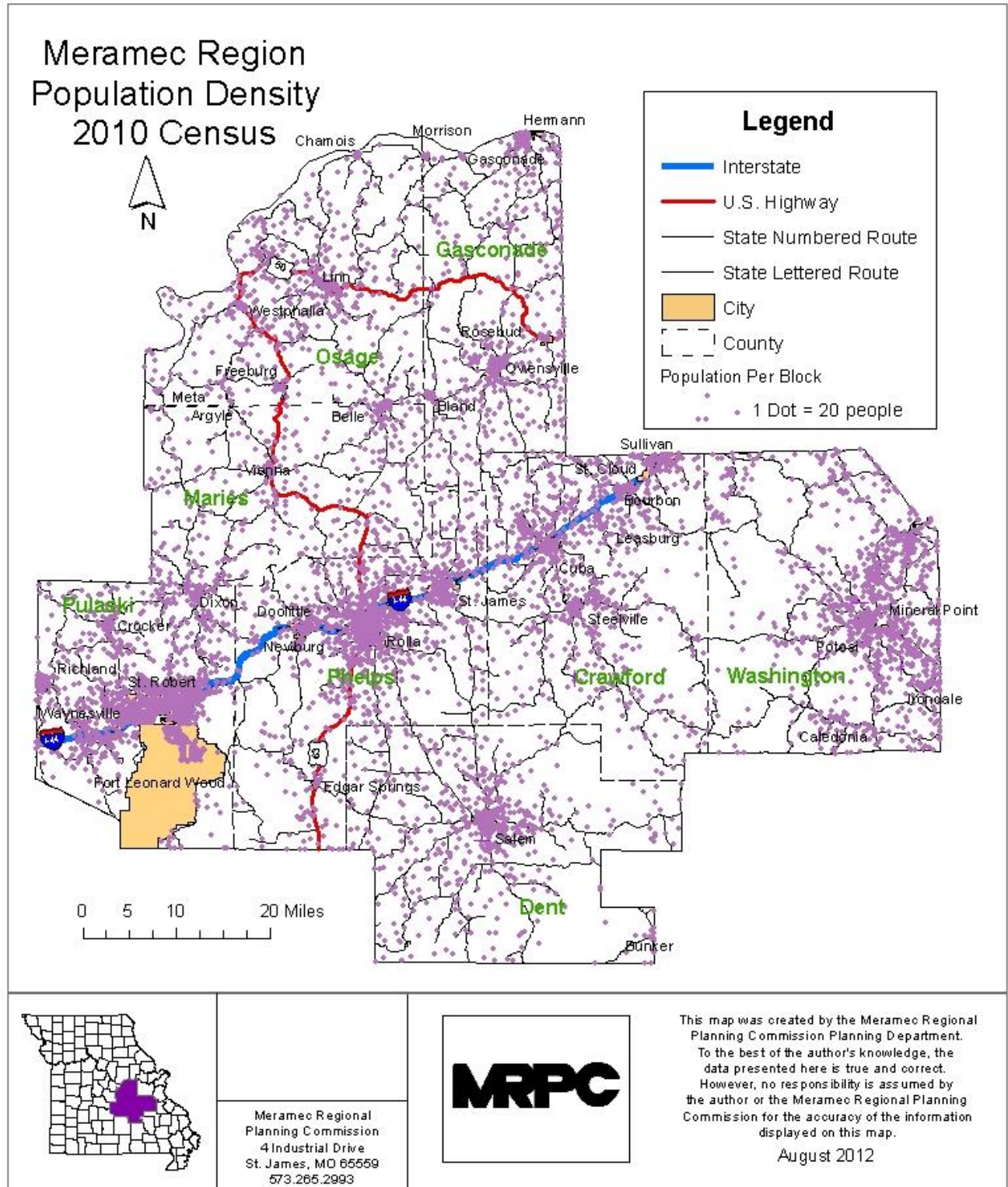
Based on 2010 Census information, the Meramec Region has a low population density of 39.2 persons per square mile compared to the state and national density which is 86.9 and 87.3 respectively. Pulaski County is the most densely populated county within the region with 95.6 persons per square mile, followed by Phelps County with 67.1. Maries and Dent counties have the lowest population densities within the region with 17.4 and 20.8 persons per square mile respectively.

Twelve of the 35 communities within the region have densities above 1,000 persons per square mile; Rolla (1,653.3), Salem (1,556.6), Dixon (1,533.7), Mineral Point (1,462.5), Linn (1,247.0), Bourbon (1,217.9), Belle (1,153.0), Potosi (1,141.6), Gasconade (1,115.0), Chamois (1,070.3), Cuba (1,048.8), and Owensville (1,013.6). Surprisingly, only two of these densely populated cities are directly on the I-44 corridor. The population density of three of the communities listed previously; Mineral Point, Gasconade, and Chamois may seem confusing when compared to the population. It is important to remember each of these communities have both a very small population and land area, to make the population density comparable to other jurisdictions the land area must be inflated.

Six of the regions communities have densities below 500 persons per square mile; Rosebud (470.1), Argyle (405.0), West Sullivan (330.6), Edgar Springs (320), Morrison (308.9) and Doolittle (235.1).

Table 2.2 provides the population densities of all counties within the Meramec Region and their respective communities as well as the population densities for the region, state and nation based on the 2010 Census information. The table also provides approximate population densities for the jurisdictions for 2000 based on 2000 Census populations compared to 2010 recorded land area. The 2000 density is provided for comparison and discussion only. Figure 2.2 below illustrates the population density throughout the region.

Map 2.2



PROJECTIONS

According to population projections by the Missouri State Division of Budget and Planning, the Meramec Region can expect continued growth for the next 30 years. However, the growth projections have not been revised since 2008 and do not reflect the growth documented with the 2010 Census. The 2010 Census documented populations of Dent, Gasconade, Osage, Phelps and Pulaski were higher than the 2008 projections for 2010. The 2008 projections (Table 2.3) have been included for comparison, information and discussion.

It is likely the population of the region will continue to grow over the next 30-years based on natural change and migration.

It is important to note, that the population of Pulaski County will likely continue to grow as the 1995 and 2005 Base Realignment and Closure (BRAC) Commission decisions are fully implemented, causing an increase of military and civilian personnel.

MIGRATION

The two major components of population change are *natural change* (the difference between births and deaths) and *migration* (the difference between population moving into an area and the population leaving that area). Tables 2.4 through 2.11 indicate migration patterns for the eight counties within the region from 1930 to 2010. Tables 2.12 and 2.13 indicate migration for the Meramec Region as a whole and State of Missouri for the same period.

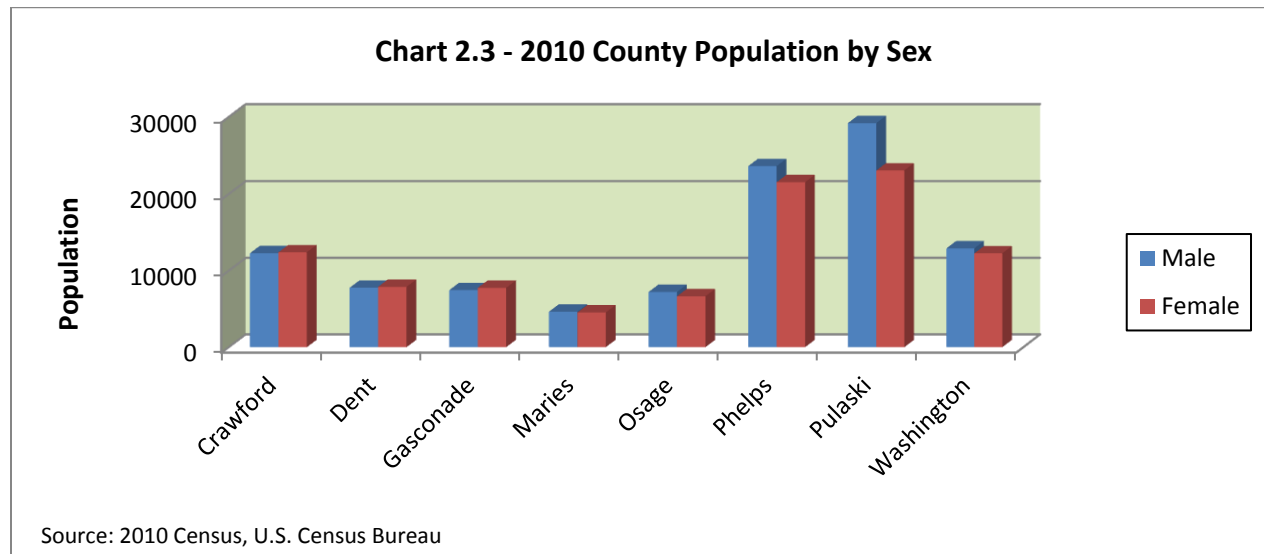
From 1930 to 2010, the Meramec Region gained a total of 71,877 persons through natural change and gained 33,601 through net migration. Some 14,000 citizens migrated out of the Meramec Region from 1940 to 1950, followed by considerable in-migration of 26,534 from 1950 to 1960, largely in Pulaski County. The only county to gain through migration during the decade from 1940-1950 was Phelps County, and it is the only county to show positive net migration in any given 10-year period since 1930. Washington County lost about 27 percent of its population from 1940 to 1950, finally gaining them back from 1970 to 1980, due to natural change.

Pulaski County's population has been the most erratic during the past 80 years, largely due to the effect of Fort Leonard Wood on the county. The county gained over 36,000 in population from 1950 to 1960, due to the reactivation of the installation in response to the Korean conflict, and added over 7,000 people from 1960 to 1970 during the increased U. S. military presence in Vietnam. However, as the Vietnam War drew to a close, the mission of Fort Leonard Wood was reduced, and Pulaski County lost almost 12,000 people from 1970 to 1980. From 1980-2000, the county population remained stable. During the period of 2000 to 2010, the effects of the 1995 and 2005 Base Realignment and Closure (BRAC) Commission decisions were felt in the county as Fort Leonard Wood became a joint military training center, serving all branches of the U.S.

military and allied forces. Also, a contributing factor was the military build-up in response to the 911 attacks and the global war on terrorism, initiating the rapid growth of the Armed Forces, resulting in a population surge of over 11,000 to Pulaski County. During the same 80 year period, Missouri's overall population increased by some 2.4 million people from 1930 to 2010, the migration for the time period was a positive 125,436.

AGE-SEX CHARACTERISTICS

The population of the Meramec Region is aging. From 1970-2010, all age categories over 25 gained in population, while those 25 and less with the exception of the 0-4 category has lost population. According to the 2010 Census, the total number of persons under age 25 decreased by about 10.7 percent from 1970 to 2010. Tables 2.14 through 2.22 display the age-sex characteristics of the population by county and region from 1970-2010. Chart 2.3 graphically illustrates the county population by sex.



The greatest decline between 1970 and 2010 occurred in the age group 20-24 by 23.3 percent, followed by the group 15-19 by 18.7 percent. Although the 20-24 year old group declined by 23.3 percent, they are still the largest segment of the population for the region.

The greatest increase between 1970 and 2010 occurred in the age group 50-54, an increase of 118.4 percent, with the second largest increase being the 45-49 age group with an increase of 117.8 percent. Notably, the third largest increase was in the 75 and older age group with a 97.9 percent increase. Persons over 50 increased by 84.7 percent from 1970-2010, the largest increase from 2000-2010 at 23.7 percent. Almost 58 percent of the population change in the region from 1990-2000 was net migration, followed by a 70 percent increase from 2000-2010.

Other age-sex statistics to note are:

- In Dent County, the age group 50-54 grew by 39.1 percent between 2000 and 2010.

- In Gasconade County, the age group 55-59 grew by 32.7 percent between 2000 and 2010.
- In Maries County, 80-84 years old segment grew 30.6 percent between 2000 and 2010.
- The largest age group in Pulaski County was 20-24 (4,232) in 2000 and also (7635) in 2010. This age group grew by 80.4 percent between 2000 and 2010. This is attributed to the military training population on Fort Leonard Wood.
- The largest age group in Phelps County was 20-24 (3,775) in 1990, (4,023) in 2000 and also (5,564) in 2010. This age group grew by 38.3 percent between 2000 and 2010. This may partially be attributed to the number of people who attend the Missouri University of Science and Technology. S&T enrollment increased by about 3,000 students from 2000 to 2011.
- In Washington County, the age group 55-59 grew by 39.6 percent between 2000 and 2010. The age group 15-19 showed a loss of 10.5 percent, which may be attributed to lack of employment opportunities in the county.

In 2010, ages 65 and older accounted for about 13.5 percent of the region's population (Table 2.22). The median age of the region (Table 2.23) in 1970 was 30.4 years. The median age had increased to 38.9 years by 2010. Washington County shows an increase of over 13 years in the median age from 1970 to 2010. Gasconade County has the oldest population with 45 years being the median age, with Pulaski County having the youngest median age with 26.6 years. The region has consistently shown a population that is older than that of both the state and the nation, although running relatively close to the state median. Factors influencing these figures are the increasing age of the population, a large number of senior citizens retiring to the rural areas, improved health care and the birthrate decline of the 1960s. Chart 2.4 graphically illustrates the county population by sex of those 50 years of age and over.

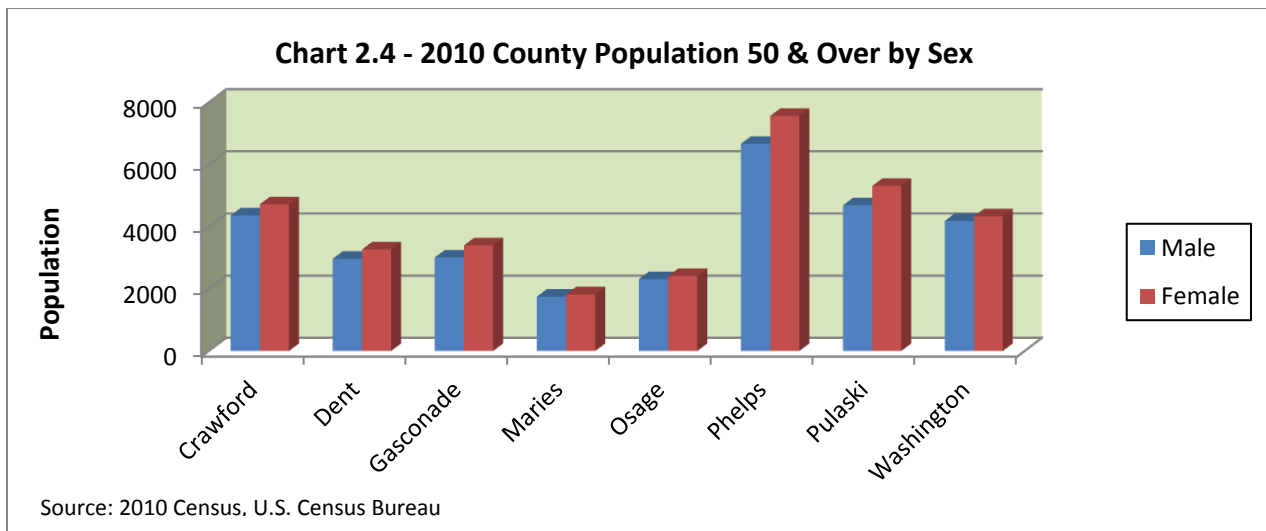
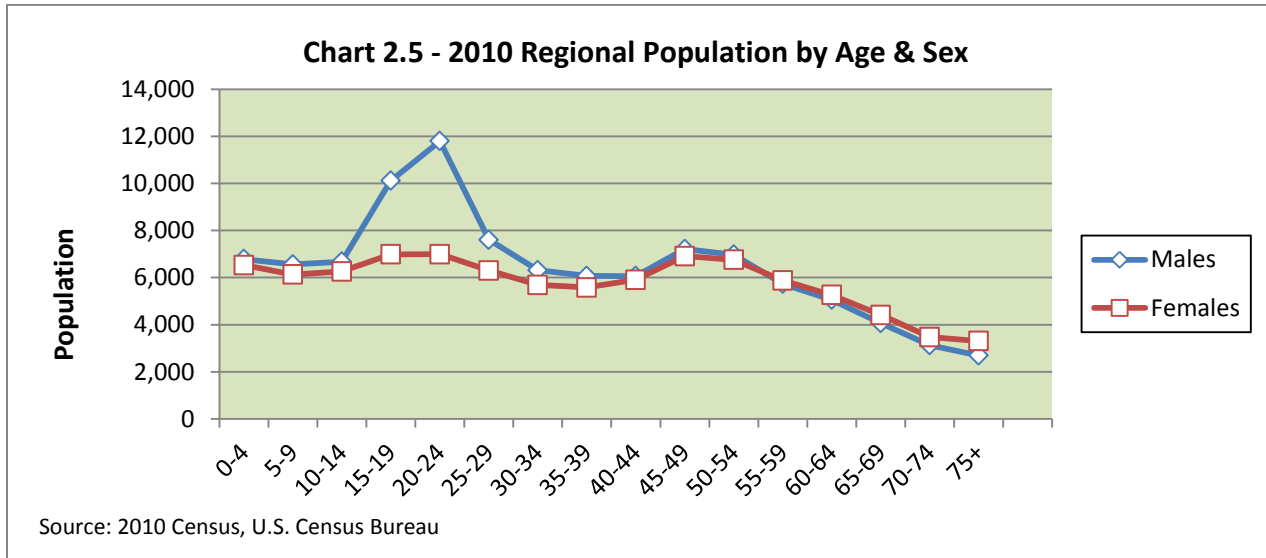
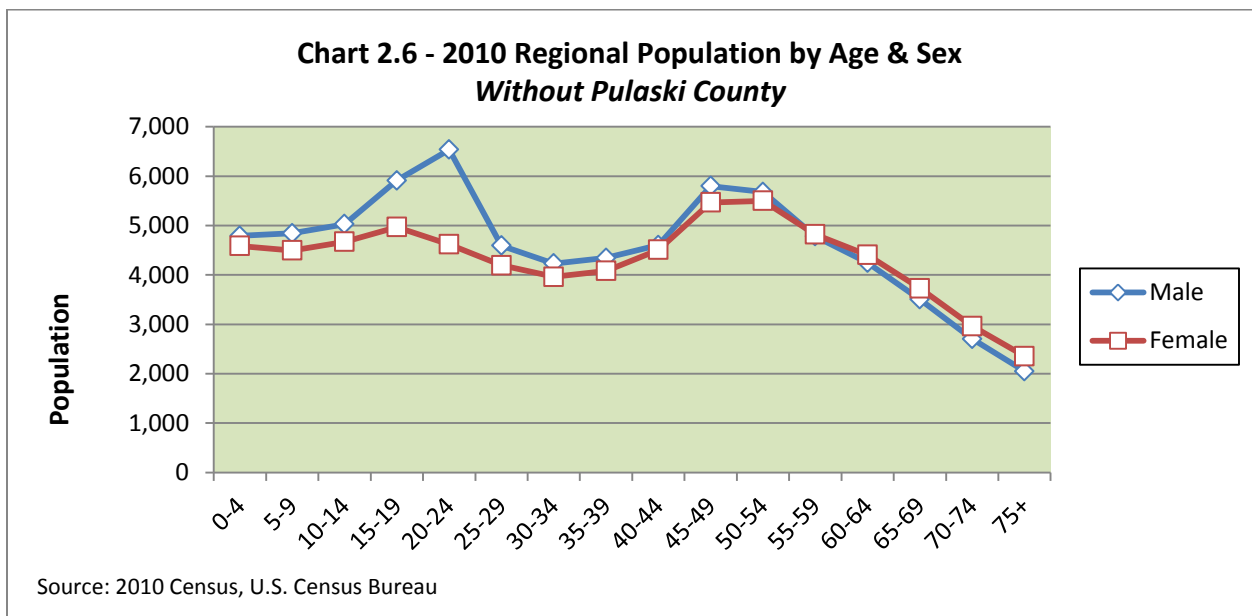


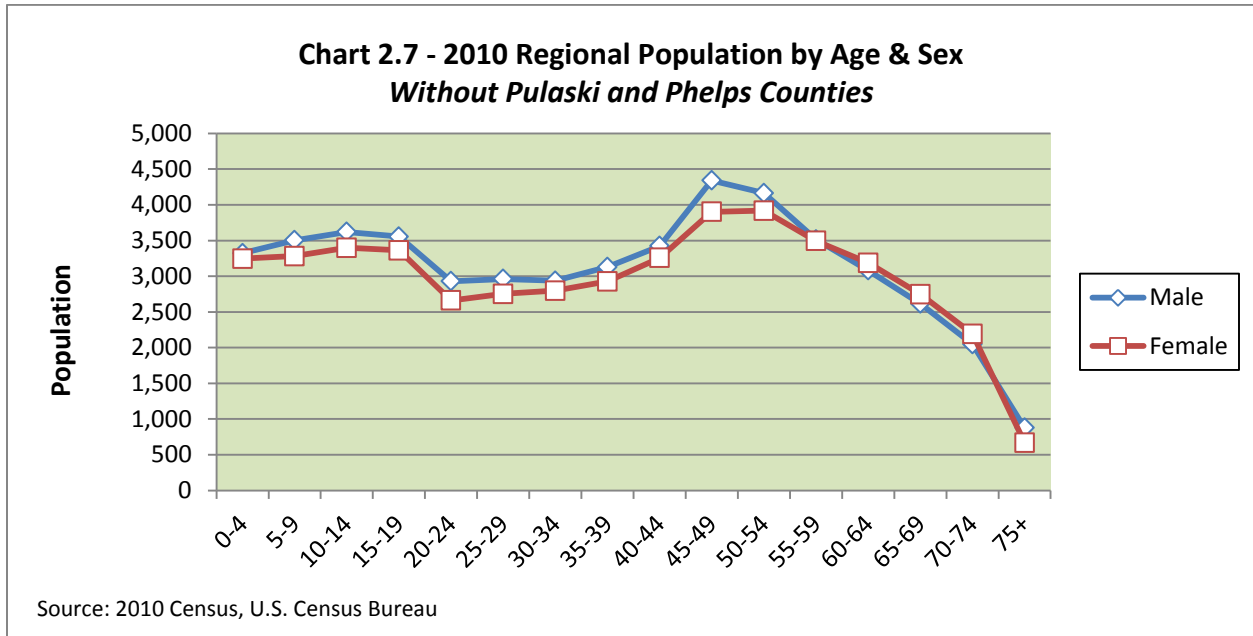
Chart 2.5 graphically illustrates the regional population by age and sex. It is important to note the large male population identified between the ages of 15 and 29 is predominately located in Pulaski and Phelps counties.



When Pulaski County is removed from the regional population as illustrated in the chart (Chart 2.6), the gap between the male and female population begins to narrow, and the “Baby Boomer” generation is more visible.



When Phelps County is also removed from the regional population as shown in (Chart 2.7), the male and female populations are nearly equal, and the “Baby Boomer” generation becomes more pronounced.

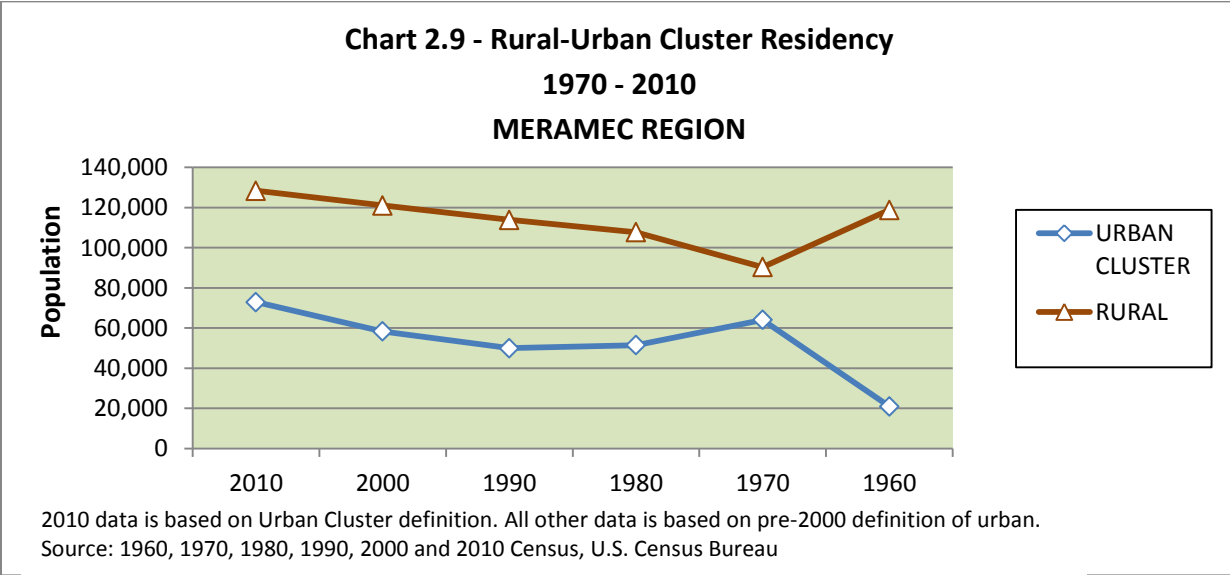
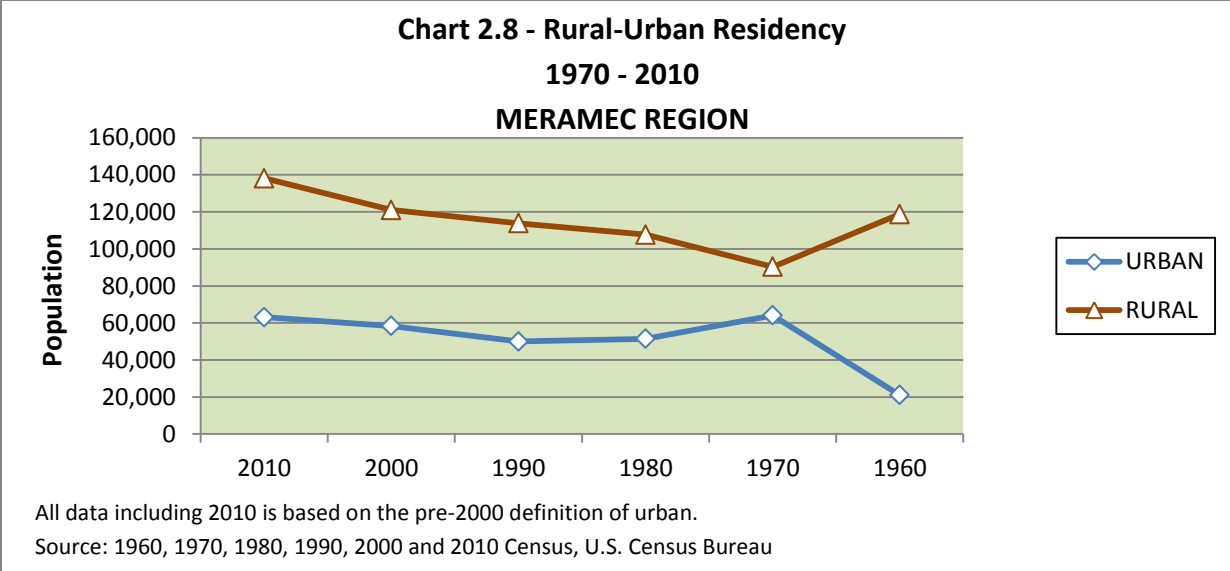


This graphically shows that Fort Leonard Wood and Missouri S&T students are predominately male, and that the region does have a large aging population.

RURAL-URBAN RESIDENCY

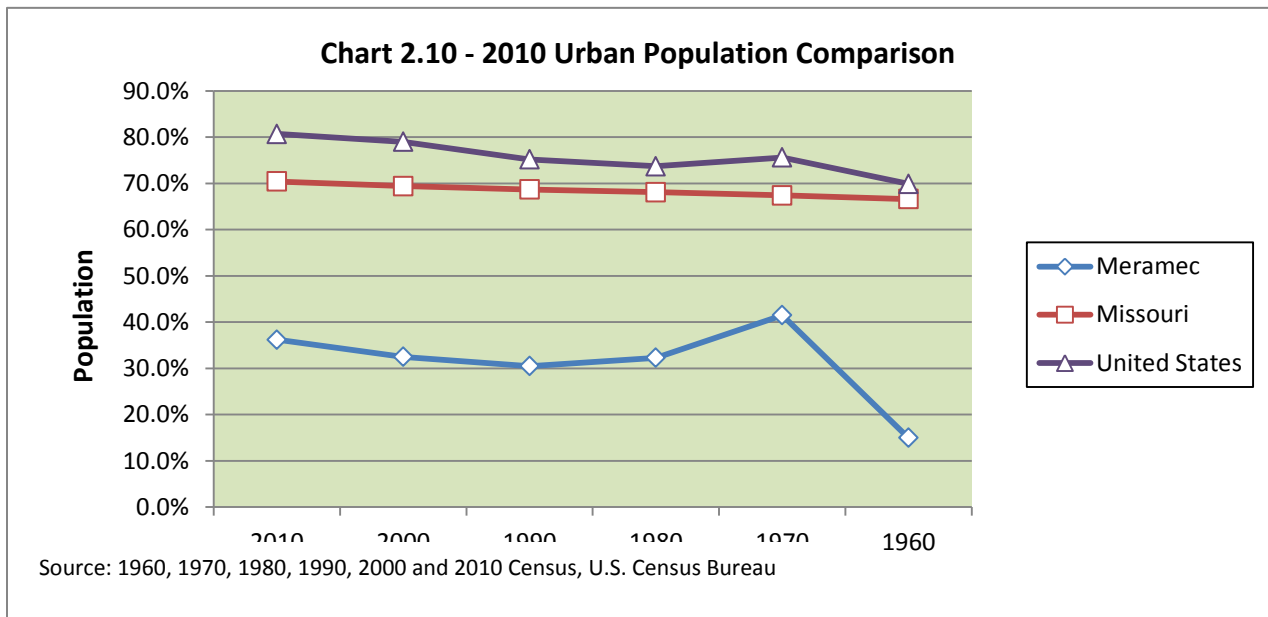
Prior to Census 2000, *Urban* was defined as residents who reside in any *incorporated* location with a population of at least 2,500. With Census 2000, *Urban Clusters* were identified and used to establish the difference between urban and rural areas. Urban Clusters are defined as a densely settled territory having at least 2,500 people but fewer than 50,000. With Census 2010, this change became more evident. To provide as much continuity as possible, all information provided in the section up to 2000 is based on the definition of Urban. The 2010 data presented is based on the definition of Urban Cluster. Chart 2.8 is based on all data displayed as the Urban definition, while Chart 2.9 displays 1960 - 2000 data as Urban and 2010 as Urban Cluster.

The charts that follow (Chart 2.8 & 2.9) leave little doubt that the Meramec Region is a rural area, slowly becoming more urbanized. With the adoption of the Urban Cluster methodology, the progression towards urban has hastened slightly. In 2010, the urban population was 63,122 (31.4 percent) with the rural as 138,132 (68.6 percent). The urban cluster population was calculated at 72,884 (36.2 percent) with the rural as 128,370 (63.8 percent).



Some 84.9 percent of the population of the region was classified as rural in 1960; by 2010, 63.8 percent was considered rural. Pulaski County has shown the largest population shift from rural since 1960, with some 56 percent of the population shifted from rural to urban. This large increase is due in part to the fact that in 1960, none of the incorporated areas exceeded the minimum 2,500 population to be classified as “urban or urban cluster.” This did not happen until 1970, when Waynesville’s population reached 3,375 and the inclusion of Fort Leonard Wood, with St. Robert reaching 2,760 in 2000. Also, from 1960 to 2010, 21.5 percent of Crawford County's population shifted from rural to urban. With Census 2010, Hermann was no longer considered an urban cluster, due to a drop in population causing Gasconade County to shift 2,262

persons to rural designation – a loss of 14.6 percent. Maries and Osage counties remained steady with 100 percent of their populations rural. Dent County continues to show a shift from urban to rural from 1960 to 2010 at 5.7 percent. From 1960 to 2000, Washington County showed a shift from urban to rural at 8.2 percent, however, in 2010 Washington showed a population shift back to urban with a gain of 8.1 percent. Tables 2.24 through 2.31 indicate the rural-urban residency for each county from 1970 to 2010. Although the Meramec Region urban population has consistently been on the rise since 1990, it remains almost 40 percent behind the state and almost 50 percent behind the national percentage (Tables 2.32 through 2.34) of urbanization as compared in Chart 2.10 below.



RACIAL GROUPS

According to the 2010 Census, the Meramec Region deviates from the national and state trends of population regarding racial groups (Table 2.35). Only 9 percent of the region's population — 17,770 people—are considered non-white, while the same group represents 26 percent of the United States' population and 16.6 percent of Missouri's population. However, the growth of the non-white population in the region is keeping pace with the United States and Missouri growth at 1.1 percent, 1.1 percent and 1.5 percent respectively. Prior to the addition of Pulaski County to the Meramec Region, the non-white population was only 3.75 percent. According to 1970 Census data, the region's non-white population was 3.72 percent, rose to 6.4 percent in 1990 and is 9 percent currently (See Tables 2.35 through 2.39) with Pulaski County having the highest non-white population at 22.7 percent and Osage County with the lowest with 1.2 percent.

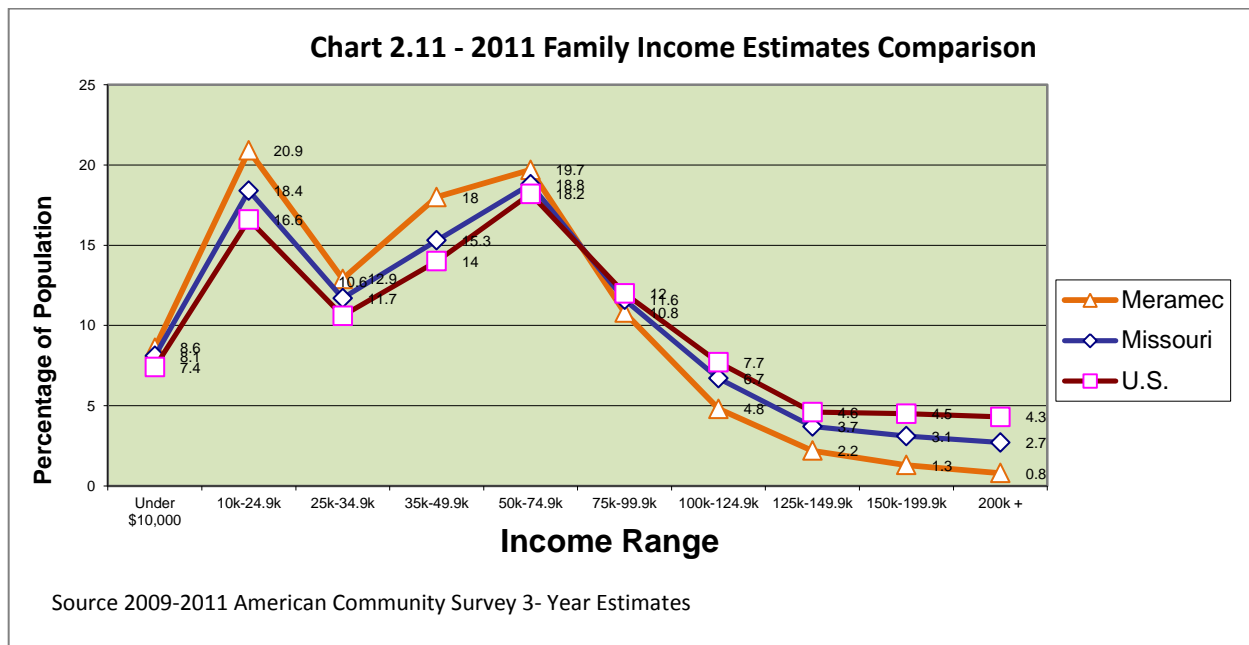
Other than white, the largest racial group in the region is “Black/African American Alone” (7,822) followed by “Two or More Races” and “Asian Alone” (2,995). With the exception of Pulaski County, the “non-white” population seems to be spread proportionately throughout the

region with slightly greater numbers in Phelps, Washington and Dent counties, which have non-white populations of 8.4 percent, 4.4 percent and 3.6 percent respectively. The Phelps County “non-white” population may be largely attributed to the student, professor and instructor population at the Missouri University of Science and Technology.

INCOME

FAMILY INCOME

Family incomes in the Meramec Region generally increased from 1990-2010. However, the family income for the region and the eight counties individually falls below the state and national averages (Tables 2.40 through 2.50). Some 20.9 percent of the regional families have an income between \$10,000 and \$24,999 compared to the state and nation at 18.4 and 16.6 percent respectively. The largest single-family income category for the region is \$200,000 and up. The percentage of population that falls into this category is only 0.8 percent, which is less than that of the state at 2.7 percent and that of the nation at 4.3 percent. Chart 2.11 below compares current family income estimates of the region with state and national estimates.



Citizens of the Meramec Region continue to bring home fewer income dollars than the nation as a whole. Between 1979 and 1989, the gap between the region’s and the nation’s median family income widened (See Tables 2.51 through 2.61).

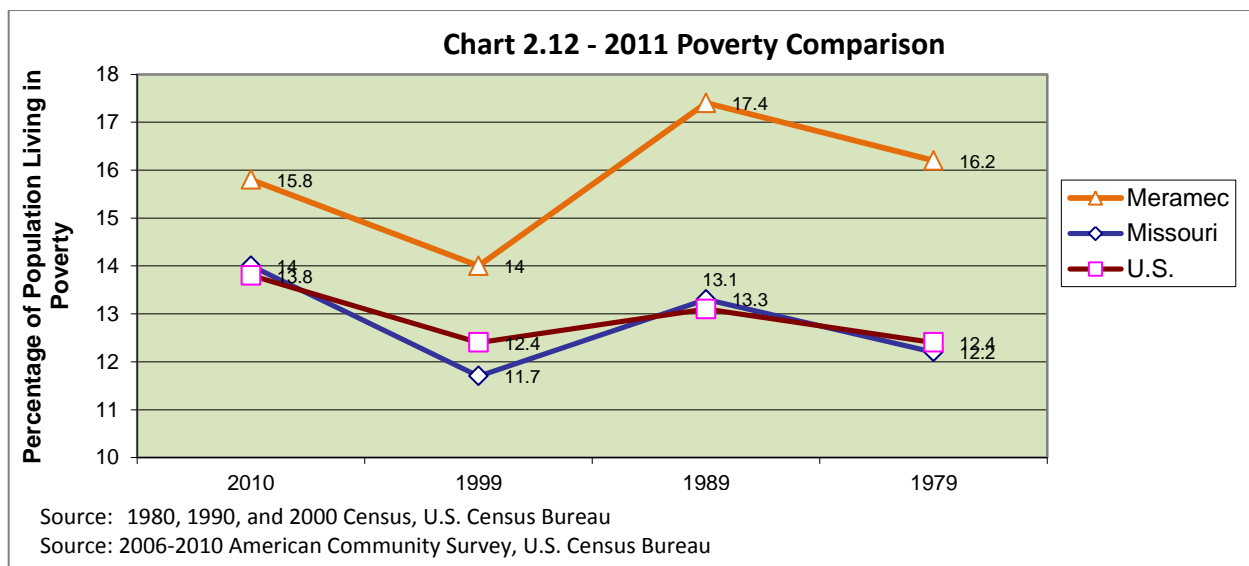
Median Family Income is defined by the U.S. Census Bureau as the income of the householder and all other individuals 15 years old and over in the household, whether they are related to the householder or not.

The median divides the income distribution into two equal parts: one-half of the cases falling below the median income and one-half above the median. For households and families, the median income is based on the distribution of the total number of households and families including those with no income.

In 1979, the region’s families were making 73.3 percent of the national median, but in 1989, that percentage had dropped to 69.1 percent. By 1999, however, the regional family median had gained considerably—76.2 percent of the national median, showing a small increase in 2010 to 77.5 percent. Osage County was the only region county showing a gain on the national median from 1979-1989. From 1989 to 1999, however, every county gained on the national median. Although showing a 4.3 percent drop since 2000, Osage County continues to carry the highest family incomes—at 88.6 percent of the national median. Washington County has the lowest, at 66.9 percent of the national median.

POVERTY

According to 2006 - 2010 American Community Survey, about 16 percent of the Meramec Region families are living in poverty (Chart 2.12). This figure is up from the 1999 percentage of 14 percent. Washington and Dent counties have historically led the region in percent of population meeting poverty guidelines for the past 30 years (Tables 2.51 through 2.61). In 1979, over 20 percent met the guidelines in these counties. These percentages increased considerably in 1989, with Washington County showing 27.2 percent and Dent County with 25.2 percent persons in poverty. In 2010, Washington and Dent counties continue to record the highest poverty levels in the region at 20.7 percent and 18.2 percent respectively. Gasconade and Osage counties continue to have the lowest number of persons in poverty, both with less than 11 percent for 2010.



EDUCATION

The educational level of the residents of the Meramec Region has increased significantly during the past 40 years. Tables 2.62 through 2.69 show that most Meramec counties had a significant increase in the percentage of adults 25 and older with at least a high school diploma during that time frame. Regionally, that percentage grew by 49.2 percent from 1970 to 2010, from 32.4 percent to 81.6 percent currently. Pulaski County, in 2010, shows the highest percentage of high school graduates, with 88.1 percent of its over-25 population holding at least a high school diploma. Washington County has the lowest percentage, with 70.3 percent, in 2010, which is a 46.9 percent increase from 1970.

Table 2.70 provides information on the percentage of the population that had continued their education beyond a high school diploma or equivalency. In 2010, about 22.8 percent of Meramec citizens 25 years and older have obtained some type of college degree, higher from 2000, when almost 19.1 percent had obtained degrees. The percentage of persons 25 years and older obtaining degrees in the region is still lower than the national average of 35.4 percent and the state average of 31.6 percent. Both Phelps and Pulaski counties have over 25 percent of their 25-plus citizens with at least an associate degree. This is to be expected because Missouri University of Science and Technology and the Rolla Technical Institute are located in Phelps County as well as several federal and state agencies that employ individuals with advanced degrees. Additionally, Fort Leonard Wood military personnel and their educated spouses increase the educational attainment percentages for the region.

With all the gains made in the past 40 years, the region as a whole continues to lag behind the state and national percentages in all educational categories (Tables 2.70 through 2.72).

TABLE 2.1 - POPULATION 1950 – 2010 (page 1 of 2)
Percent changes are based on the previous census population

	201		200		199		198		197		196		195	
Area	Populatio	% Chan	Populatio	% Chan	Populatio	% Chan	Populatio	% Chan	Populati	% Chan	Populati	% Chan	Populati	% Chan
CRAWFORD	24,696	8.3	22,804	18.9	19,173	4.8	18,300	23.4	14,828	17.2	12,647	8.9	11,615	-9.3
Bourbon	1,632	21.1	1,348	13.5	1,18	-5.6	1,259	31.8	95	22.6	77	43.5	54	50.8
Cuba	3,356	1.1	3,320	27.3	2,53	19.7	2,120	2.4	2,070	23.8	1,672	28.5	1,301	25.9
Leasburg	33	4.6	32	11.8	28	-5.0	30	39.4	21	23.9	17	-1.1	17	2.9
Steelville	1,642	14.9	1,429	-2.5	1,46	-0.3	1,470	5.6	1,392	23.5	1,127	-2.6	1,157	14.2
Sullivan	*(1,474)	11.5	*(1,117)	12.2	*(1,025)	3.7	5,461	7.1	5,100	24.5	4,098	32.8	3,019	19.9
West	11	N/A	N/	N/I	N/	N/I	N/	N/I	N/	N/I	N/	N/I	N/	N/I
DENT	15,657	4.9	14,927	8.9	13,702	-5.6	14,517	26.7	11,457	9.7	10,455	-4.5	10,936	7.0
Salem	4,950	2	4,854	8.2	4,48	0.7	4,454	2.1	4,363	12.7	3,870	6.7	3,611	14.6
GASCONAD	15,222	-0.8	15,342	9.5	14,006	6.7	13,181	11.0	11,878	-2.6	12,195	-1.2	12,342	-0.6
Bland	53	6.7	56	-13.2	65	-1.7	66	6.6	62	-5.0	65	9.7	59	5.5
Gasconade	22	-16.5	26	5.5	25	1.2	25	6.4	23	-29.4	33	-25.7	44	9.3
Hermann	2,431	-9.1	2,674	-2.9	2,75	2.2	2,695	1.4	2,658	4.8	2,536	0.5	2,523	9.3
Morrison	13	13	12	-23.1	16	-5.3	16	-27.8	23	0.9	23	-20.3	29	7.4
Owensville	2,676	7	2,500	7.5	2,32	3.8	2,241	-7.2	2,416	1.6	2,379	23.5	1,946	35.2
Rosebud	40	12.4	36	-4.2	38	16.6	32	7.5	30	5.9	28	13.4	25	31.6
MARIES	9,176	3.1	8,903	11.6	7,97	5.6	7,551	10.2	6,851	-5.9	7,282	-1.9	7,423	-14.1
Belle	1,545	15	1,344	10.3	1,21	-1.2	1,099	-3.0	1,133	11.5	1,016	12.1	90	45.9
Vienna	61	-2.9	62	2.8	61	18.9	51	1.8	50	-5.8	53	13.8	47	-8.7
OSAGE	13,878	6.2	13,062	8.7	12,018	3.1	12,014	9.2	10,994	1.2	10,867	-3.8	11,301	-22.5
Argyle	16	-1.2	16	-7.9	17	3.4	21	-17.6	26	62.2	99	-38.9	16	-19.5
Chamois	39	-13.2	45	1.6	44	1.6	54	-11.2	61	6.5	65	6.0	62	-6.3
Freeburg	43	3.3	42	-5.2	44	2.7	55	-4.0	57	44.6	39	7.8	37	12.1
Linn	1,459	7.8	1,354	17.9	1,14	3.6	1,211	-6.1	1,289	22.8	1,050	38.5	75	-7.4
Meta	22	-8	24	0.0	24	0.8	33	-13.2	38	7.5	36	2.0	35	-14.7
Westphalia	38	21.6	32	11.5	28	-2.8	28	-14.2	33	5.1	31	0.9	31	8.8

Table 2.1 - POPULATION 1950 – 2010 (page 2 of 2)

Percent changes are based on the previous census population

Area	201		200		199		198		197		196		195	
	Populatio	Chang	Populatio	Chang	Populatio	Chang	Populatio	Chang	Populati	Chang	Populati	Chang	Populati	Chang
PHELPS	45.156	13.4	39.825	13.0	35.248	4.8	33.633	14.1	29.481	16.1	25.396	18.1	21.504	23.3
Doolittle	63	-2.2	64	7.5	59	-14.6	70	37.8	50	2.0	49	110.	23	----
Edgar	20	9.5	19	-11.6	21	-20.7	27	N/A	N/	----	N/	----	N/	----
Newburg	47	-2.9	48	-17.8	58	-20.7	74	-7.8	80	-8.8	83	-5.9	93	11.1
Rolla	19.559	19.5	16.367	16.2	14.090	5.9	13.303	0.4	13.245	19.0	11.132	19.0	9.354	81.9
St. James	4.216	13.8	3.704	13.8	3.25	-2.2	3.328	19.4	2.787	16.9	2.384	19.4	1.996	10.2
PULASKI	52.274	27.0	41.165	-0.3	41.307	-1.7	42.011	-21.9	53.781	15.5	46.567	348.	10.392	-3.6
Crocker	1.110	7.5	1.033	-4.1	1.07	10.0	97	20.3	81	-0.9	82	15.3	71	5.7
Dixon	1.549	-1.3	1.570	-0.9	1.58	13.1	1.402	1.1	1.387	-5.8	1.473	49.1	98	33.3
Richland	**(1.613)	3.2	**(1.618)	-11.0	**(1.879)	5.6	**(1.803)	7.8	1.783	7.3	1.662	46.7	1.133	15.0
St. Robert	4.340	57.2	2.760	59.5	1.73	-0.3	1.735	18.4	1.465	70.2	86	N/A	N/	----
Waynesville	4.830	37.7	3.507	9.4	3.20	11.4	2.879	-14.7	3.375	42.0	2.377	135.	1.010	115.
WASHINGT	25.195	7.9	23.344	14.5	20.380	13.3	17.983	19.2	15.086	5.2	14.346	-2.3	14.689	-16.0
Caledonia	13	-17.7	15	11.3	14	-12.4	16	43.3	11	-5.0	11	-16.8	14	2.8
Irondale	44	1.8	43	-7.8	47	35.8	34	9.4	31	-4.8	33	-24.3	44	-0.7
Mineral	35	-3.3	36	-5.5	38	7.3	35	-3.0	36	11.1	33	9.2	30	-12.6
Potosi	2.660	-0.1	2.662	-0.8	2.68	6.1	2.528	-8.4	2.761	-1.6	2.805	17.6	2.359	17.0
REGION	201.254	12.2	179.372	9.5	163.810	2.9	159.190	3.1	154.356	10.5	139.745	39.5	100.202	----
MISSOURI	5.988.927	7.0	5.595.211	8.6	5.117.073	4.1	4.916.68	5.1	4.673.50	8.3	4.319.81	9.2	39.544.6	4.5
U.S.	308.745.5	9.7	281.421.9	13.1	248.709.87	9.8	226.545.8	11.4	203.211.9	13.3	179.323.1	18.8	151.325.7	14.5

N/I - Not Incorporated

N/A - Not Available

* Crawford County portion of Sullivan

**

Pulaski County portion of Richland

SOURCE: U.S. Census of Population 1940-2000, Census Bureau, U.S. Department of Commerce

**Table 2.2 - Population Density Comparisons 2000 - 2010
Based on Entire Land Mass Only**

Jurisdiction	Size (sqm)	2010 Population	2010 Density (sqm)	2000 Population	2000 Approx. Density (sqm)
CRAWFORD	742.52	24,696	33.3	22,804	30.7
Bourbon	1.34	1,632	1,217.9	1,348	1,006.0
Cuba	3.20	3,356	1,048.8	3,320	1,037.5
Leasburg	0.43	338	786.0	323	751.2
Steelville	2.42	1,642	678.5	1,429	590.5
Sullivan	7.90	7,081	896.3	6,351	803.9
West Sullivan	0.36	119	330.6	N/I	***
DENT	753.54	15,657	20.8	14,927	19.8
Salem	3.18	4,950	1,556.6	4,854	1,526.4
GASCONADE	520.67	15,222	29.2	15,342	29.5
Bland	0.65	539	829.2	565	869.2
Gasconade	0.20	223	1,115.0	267	1,335.0
Hermann	2.53	2,431	960.9	2,674	1,056.9
Morrison	0.45	139	308.9	123	273.3
Owensville	2.64	2,676	1,013.6	2,500	947.0
Rosebud	0.87	409	470.1	364	418.4
MARIES	527.73	9,176	17.4	8,903	16.9
Belle	1.34	1,545	1,153.0	1,344	1,003.0
Vienna	1.06	610	575.5	628	592.5
OSAGE	606.11	13,878	22.9	13,062	21.6
Argyle	0.40	162	405.0	164	410.0
Chamois	0.37	396	1,070.3	456	1,232.4
Freeburg	0.83	437	526.5	423	509.6
Linn	1.17	1,459	1,247.0	1,354	1,157.3
Meta	0.35	229	654.3	249	711.4
Westphalia	0.53	389	734.0	320	603.8
PHELPS	672.85	45,156	67.1	39,825	59.2
Doolittle	2.68	630	235.1	644	240.3
Edgar Springs	0.65	208	320.0	190	292.3
Newburg	0.61	470	770.5	484	793.4
Rolla	11.83	19,559	1,653.3	16,367	1,383.5
St. James	4.28	4,216	985.0	3,704	865.4
PULASKI	547.02	52,274	95.6	41,165	75.3
Crocker	1.24	1,110	895.2	1,033	833.1
Dixon	1.01	1,549	1,533.7	1,570	1,554.5
Richland	2.27	1,863	820.7	1,805	795.2
St. Robert	7.83	4,340	554.3	2,760	352.5
Waynesville	6.42	4,830	752.3	3,507	546.3
WASHINGTON	759.59	25,195	33.2	23,344	30.7
Caledonia	0.16	130	812.5	158	987.5
Irondale	0.53	445	839.6	437	824.5
Mineral Point	0.24	351	1,462.5	363	1,512.5
Potosi	2.33	2,660	1,141.6	2,662	1,142.5
Region	5,130.03	201,254	39.2	179,372	35.0
State	68,888.50	5,988,927	86.9	5,595,211	81.2
Nation	3,537,619.77	308,745,538	87.3	281,421,906	79.6

SOURCE: 2000 & 2010 Census, U.S. Census Bureau

Table 2.3 - POPULATION PROJECTION BY COUNTY

County	2010 Census Population		2010	2015		2020		2025		2030	
	Documente d Population	% Change from Projectio n	Projected Populatio n	Projected Populatio n	% Change *	Projected Populatio n	% Change *	Projected Populatio n	% Change *	Projected Populatio n	% Change *
CRAWFORD	24,696	0.4	24,608	25,614	4.1	26,561	3.7	27,319	2.9	27,895	2.1
DENT	15,657	3.2	15,167	15,309	0.9	15,446	0.9	15,576	0.8	15,694	0.8
GASCONADE	15,222	-2.5	15,611	15,743	0.8	15,890	0.9	15,958	0.4	15,921	-0.2
MARIES	9,176	-1.1	9,275	9,563	3.1	9,848	3.0	10,129	2.9	10,406	2.7
OSAGE	13,878	4.5	13,280	13,379	0.7	13,493	0.9	13,608	0.9	13,704	0.7
PHELPS	45,156	4.5	43,206	44,558	3.1	45,824	2.8	46,864	2.3	47,635	1.6
PULASKI	52,274	17.6	44,466	44,989	1.2	45,497	1.1	46,003	1.1	46,520	1.1
WASHINGTON	25,195	1.6	24,789	25,614	3.3	26,294	2.7	26,842	2.1	27,294	1.7
REGION	201,254	5.7	190,402	194,769	2.3	198,853	2.1	202,299	1.7	205,069	1.4
MISSOURI	5,988,927	0.2	5,979,344	6,184,390	3.4	6,389,850	3.3	6,580,868	3.0	6,746,762	2.5

* Percent Changes are compared to the previous five year projection

SOURCE: Missouri State Government, Division of Budget and Planning;
March 2008

Table 2.4 - CRAWFORD COUNTY MIGRATION: 1930 - 2010

	Beginning Population	Ending Population	Change	Births	Deaths	Natural Change	Net Migration
2000 - 2010	22,804	24,696	1,892	3,092	2,448	644	1,248
1990 - 2000	19,173	22,804	3,631	3,015	2,402	613	3,018
1980 - 1990	18,300	19,173	873	2,679	2,083	596	277
1970 - 1980	14,828	18,300	3,472	2,650	2,086	564	2,908
1960 - 1970	12,647	14,828	2,181	2,458	1,806	652	1,529
1950 - 1960	11,615	12,647	1,032	2,432	1,463	969	63
1940 - 1950	12,693	11,615	-1,078	2,097	1,111	986	-2,064
1930 - 1940	11,287	12,693	1,406	1,860	1,098	762	644

SOURCE: USDC, Bureau of Census, <http://www.oseda.missouri.edu/historicaldata/mig>

SOURCE: Missouri Office of Administration, Division of Budget and Planning, Population Projections 2000 to 2030

Table 2.5 - DENT COUNTY MIGRATION: 1930 - 2010

	Beginning Population	Ending Population	Change	Births	Deaths	Natural Change	Net Migration
2000 - 2010	14,927	15,657	730	1,825	1,858	-33	763
1990 - 2000	13,702	14,927	1,225	1,713	1,854	-141	1,366
1980 - 1990	14,517	13,702	-815	1,930	1,721	209	-1,024
1970 - 1980	11,457	14,517	3,060	2,010	1,733	277	2,783
1960 - 1970	10,445	11,457	1,012	1,645	1,508	137	875
1950 - 1960	10,936	10,445	-491	1,999	1,212	787	-1,278
1940 - 1950	11,763	10,936	-827	2,099	1,154	945	-1,772
1930 - 1940	10,974	11,736	789	1,781	1,100	681	108

SOURCE: USDC, Bureau of Census, <http://www.oseda.missouri.edu/historicaldata/mig>

SOURCE: Missouri Office of Administration, Division of Budget and Planning, Population Projections 2000 to 2030

Table 2.6 - GASCONADE COUNTY MIGRATION: 1930 - 2010

	Beginning Population	Ending Population	Change	Births	Deaths	Natural Change	Net Migration
2000 - 2010	15,342	15,222	-120	1,719	1,841	-122	2
1990 - 2000	14,006	15,342	1,336	1,740	1,959	-219	1,555
1980 - 1990	13,181	14,006	825	1,854	1,825	29	796
1970 - 1980	11,878	13,181	1,303	1,587	1,815	-228	1,531
1960 - 1970	12,195	11,878	-317	1,721	1,631	90	-407
1950 - 1960	12,342	12,195	-147	2,240	1,435	805	-952
1940 - 1950	12,414	12,343	-72	2,170	1,360	810	-882
1930 - 1940	12,172	12,414	242	1,895	1,242	653	-411

SOURCE: USDC, Bureau of Census, <http://www.oseda.missouri.edu/historicaldata/mig>

SOURCE: Missouri Office of Administration, Division of Budget and Planning, Population Projections 2000 to 2030

Table 2.7 - MARIES COUNTY MIGRATION: 1930 - 2010

	Beginning Population	Ending Population	Change	Births	Deaths	Natural Change	Net Migration
2000 - 2010	8,903	9,176	273	1,012	913	99	174
1990 - 2000	7,976	8,903	927	934	926	8	919
1980 - 1990	7,551	7,976	425	992	868	124	301
1970 - 1980	6,851	7,551	700	962	750	212	488
1960 - 1970	7,282	6,851	-431	1,089	808	281	-712
1950 - 1960	7,423	7,282	-141	1,431	711	720	-861
1940 - 1950	8,638	7,423	-1,215	1,539	675	864	-2,079
1930 - 1940	8,368	8,638	270	1,605	624	981	-711

SOURCE: USDC, Bureau of Census, <http://www.oseda.missouri.edu/historicaldata/mig>

SOURCE: Missouri Office of Administration, Division of Budget and Planning, Population Projections 2000 to 2030

Table 2.8 - OSAGE COUNTY MIGRATION: 1930 - 2010

	Beginning Population	Ending Population	Change	Births	Deaths	Natural Change	Net Migration
2000 - 2010	12,375	13,878	1,503	1,686	1,306	380	1,123
1990 - 2000	12,462	12,375	-87	2,556	1,136	1,420	-1,507
1980 - 1990	12,375	11,301	-1,074	2,258	1,081	1,177	-2,251
1970 - 1980	11,301	10,867	-434	2,469	1,130	1,339	-1,773
1960 - 1970	10,867	10,994	127	2,115	1,208	907	-780
1950 - 1960	10,994	12,014	1,020	1,847	1,223	624	396
1940 - 1950	12,014	12,018	4	1,758	1,188	570	-566
1930 - 1940	12,018	13,062	1,044	1,623	1,207	416	628

SOURCE: USDC, Bureau of Census, <http://www.oseda.missouri.edu/historicaldata/mig>

SOURCE: Missouri Office of Administration, Division of Budget and Planning, Population Projections 2000 to 2030

Table 2.9 - PHELPS COUNTY MIGRATION: 1930 - 2010

	Beginning Population	Ending Population	Change	Births	Deaths	Natural Change	Net Migration
2000 - 2010	39,825	45,156	5,331	4,979	4,118	861	4,470
1990 - 2000	35,248	39,825	4,577	4,460	3,762	698	3,879
1980 - 1990	33,633	35,248	1,615	4,695	3,523	1,172	443
1970 - 1980	29,567	33,633	4,066	4,501	3,065	1,436	2,630
1960 - 1970	25,396	29,567	4,171	5,124	2,709	2,415	1,756
1950 - 1960	21,504	25,396	3,892	5,554	2,263	3,291	601
1940 - 1950	17,437	21,504	4,067	4,422	2,108	2,314	1,753
1930 - 1940	15,308	17,437	2,129	3,134	2,396	738	1,391

SOURCE: USDC, Bureau of Census, <http://www.oseda.missouri.edu/historicaldata/mig>

SOURCE: Missouri Office of Administration, Division of Budget and Planning, Population Projections 2000 to 2030

Table 2.10 - PULASKI COUNTY MIGRATION: 1930 - 2010

	Beginning Population	Ending Population	Change	Births	Deaths	Natural Change	Net Migration
2000 - 2010	41,165	52,274	11,109	6,280	2,588	3,692	7,417
1990 - 2000	41,307	41,165	-142	6,736	2,474	4,262	-4,404
1980 - 1990	42,011	41,307	-704	7,604	2,271	5,333	-6,037
1970 - 1980	53,967	42,011	-11,956	7,372	2,100	5,272	-17,228
1960 - 1970	46,567	53,967*	7,400	4,069	1,792	2,277	5,123
1950 - 1960	10,392	46,567	36,175	4,390	1,498	2,892	33,283
1940 - 1950	10,775	10,392	-388	2,852	1,290	1,562	-1,945
1930 - 1940	10,755	10,775	20	2,389	1,042	1,347	-1,327

SOURCE: USDC, Bureau of Census, <http://www.oseda.missouri.edu/historicaldata/mig>

SOURCE: Missouri Office of Administration, Division of Budget and Planning, Population Projections 2000 to 2030

Table 2.11 - WASHINGTON COUNTY MIGRATION: 1930 - 2010

	Beginning Population	Ending Population	Change	Births	Deaths	Natural Change	Net Migration
2000 - 2010	23,344	25,195	1,851	3,307	2,301	1,006	845
1990 - 2000	20,380	23,344	2,964	2,990	2,065	925	2,039
1980 - 1990	17,983	20,380	2,397	3,000	1,810	1,190	1,207
1970 - 1980	15,086	17,983	2,897	3,131	1,715	1,416	1,481
1960 - 1970	14,346	15,086	740	3,104	1,664	1,440	-700
1950 - 1960	14,689	14,346	-343	3,665	1,459	2,206	-2,549
1940 - 1950	17,492	14,689	-2,803	3,362	1,399	1,963	-4,766
1930 - 1940	14,450	17,492	3,042	3,126	1,545	1,581	1,461

SOURCE: USDC, Bureau of Census, <http://www.oseda.missouri.edu/historicaldata/mig>

SOURCE: Missouri Office of Administration, Division of Budget and Planning, Population Projections 2000 to 2030

TABLE 2.12 - MERAMEC REGION MIGRATION: 1930 - 2010

	Beginning Population	Ending Population	Change	Births	Deaths	Natural Change	Net Migration
2000 - 2010	179,372	201,254	21,882	23,900	17,373	6,527	15,355
1990 - 2000	163,810	179,372	15,562	23,211	16,649	6,562	9,000
1980 - 1990	159,190	163,810	4,620	24,512	15,289	9,223	-4,603
1970 - 1980	154,628	159,190	4,562	24,060	14,487	9,573	-5,011
1960 - 1970	139,745	154,628	14,883	21,325	13,126	8,199	6,684
1950 - 1960	100,202	139,745	39,543	24,180	11,171	13,009	26,534
1940 - 1950	103,587	100,202	-3,385	20,799	10,178	10,621	-14,006
1930 - 1940	95,776	103,587	7,811	18,346	10,183	8,163	-352

SOURCE: USDC, Bureau of Census, <http://www.oseda.missouri.edu/historicaldata/mig>

SOURCE: Missouri Office of Administration, Division of Budget and Planning, Population Projections 2000 to 2030

TABLE 2.13 - STATE OF MISSOURI MIGRATION: 1930 - 2010

	Beginning Population	Ending Population	Change	Births	Deaths	Natural Change	Net Migration
2000 - 2010	5,595,211	5,988,927	393,716	761,545	535,852	225,693	168,023
1990 - 2000	5,117,073	5,595,211	478,138	753,673	534,120	219,533	258,585
1980 - 1990	4,916,766	5,117,073	200,307	762,363	469,454	265,909	-65,602
1970 - 1980	4,677,623	4,916,766	239,143	728,404	500,067	228,337	10,806
1960 - 1970	4,319,813	4,677,623	357,810	854,304	501,465	352,839	4,971
1950 - 1960	3,954,653	4,319,813	365,160	933,292	449,788	483,504	-118,344
1940 - 1950	3,784,664	3,954,653	169,989	745,523	430,494	315,029	-145,040
1930 - 1940	3,629,367	3,784,664	155,297	586,049	442,789	143,260	12,037

SOURCE: USDC, Bureau of Census, <http://www.oseda.missouri.edu/historicaldata/mig>

SOURCE: Missouri Office of Administration, Division of Budget and Planning, Population Projections 2000 to 2030

**TABLE 2.14 - AGE-SEX COMPOSITION OF THE POPULATION
FOR
CRAWFORD COUNTY, 1970 - 2010**

Age Group	2010				2000				1990				1980				1970			
	Number of Males	% of Total Males	Number of Females	% of Total Females	Number of Males	% of Total Males	Number of Females	% of Total Females	Number of Males	% of Total Males	Number of Females	% of Total Females	Number of Males	% of Total Males	Number of Females	% of Total Females	Number of Males	% of Total Males	Number of Females	% of Total Females
0-4	796	3.2	865	3.5	755	6.7	730	6.3	672	7.2	624	6.3	727	8.1	669	7.2	616	8.6	609	8.0
5-9	861	3.5	780	3.2	812	7.2	823	7.1	787	8.4	745	7.6	740	8.3	720	7.7	727	10.1	703	9.2
10-14	885	3.6	788	3.2	935	8.3	824	7.1	766	8.2	735	7.5	753	8.4	736	7.9	787	10.9	818	10.7
15-19	799	3.2	821	3.3	873	5.5	821	7.1	681	7.3	645	6.6	819	9.2	791	8.5	623	8.6	608	8.0
20-24	705	2.9	671	2.7	613	5.5	607	5.3	485	5.2	509	5.2	651	7.3	658	7.0	319	4.4	427	5.6
25-29	729	3	693	2.8	587	5.2	617	5.3	659	7.1	677	6.9	554	6.2	585	6.2	395	5.5	395	5.2
30-34	684	2.8	693	2.8	690	6.1	697	6.0	724	7.8	733	7.5	544	6.1	585	6.2	345	4.8	390	5.1
35-39	699	2.8	669	2.7	867	7.7	881	7.6	613	6.6	653	6.6	519	5.8	500	5.3	385	5.3	360	4.7
40-44	808	3.3	777	3.1	913	8.1	891	7.7	576	6.2	596	6.1	445	5.0	458	4.9	382	5.3	380	5.0
45-49	964	3.9	927	3.8	732	6.5	758	6.6	497	5.3	499	5.1	447	5.0	459	4.9	330	4.6	427	5.6
50-54	989	4	939	3.8	691	6.1	704	6.1	496	5.3	531	5.4	444	5.0	473	5.1	366	5.1	359	4.7
55-59	803	3.3	833	3.4	599	5.3	595	5.1	494	5.3	497	5.1	417	4.7	516	5.5	384	3.3	424	5.6
60-64	732	3	769	3.1	593	5.3	594	5.1	475	5.1	505	5.1	448	5.0	499	5.3	394	5.5	464	6.1
65-69	631	2.6	641	2.6	492	4.4	553	4.8	433	4.6	537	5.5	512	5.7	527	5.6	422	5.9	418	5.5
70-74	482	2	508	2.1	460	4.1	462	4.0	388	4.2	443	4.5	386	4.3	463	5.0	298	4.1	347	4.5
75-79	358	1.4	409	1.7	285	2.5	410	3.5	308	3.3	387	3.9	279	3.1	327	3.5	225	3.1	249	3.2
80-84	213	0.9	304	1.2	216	1.9	289	2.5	159	1.7	291	3.0	153	1.7	226	2.4	129	1.8	151	2.0
85+	153	0.6	318	1.3	132	1.2	303	2.6	125	1.3	228	2.3	10	1.1	167	1.8	76	1.1	96	1.3
Total	12,291	49.8	12,405	50.2	11,245	49.3	11,559	50.7	9,338	48.7	9,835	51.3	8,941	48.9	9,359	51.1	7,203	48.6	7,625	51.4

SOURCE: 1970, 1980, 1990, 2000 & 2010 Census, U.S. Census Bureau

**TABLE 2.15 - AGE-SEX COMPOSITION OF THE POPULATION
FOR
DENT COUNTY, 1970 - 2010**

Age Group	2010				2000				1990				1980				1970			
	Number of Males	% of Total Males	Number of Females	% of Total Females	Number of Males	% of Total Males	Number of Females	% of Total Females	Number of Males	% of Total Males	Number of Females	% of Total Females	Number of Males	% of Total Males	Number of Females	% of Total Females	Number of Males	% of Total Males	Number of Females	% of Total Females
0-4	504	3.2	461	2.9	492	6.8	467	6.1	442	6.7	409	5.7	534	7.7	536	7.1	421	7.6	416	5.7
5-9	531	3.4	475	3	507	7.0	493	6.4	518	7.9	503	7.1	557	8.0	539	7.1	499	9.0	511	7.1
10-14	551	3.5	498	3.2	559	7.7	517	6.7	551	8.4	518	7.3	576	8.3	545	7.2	611	11.0	594	7.3
15-19	522	3.3	480	3.1	552	7.6	521	6.8	519	7.9	489	6.9	648	9.3	612	8.1	462	8.3	459	6.9
20-24	388	2.5	394	2.5	355	4.9	394	5.1	346	5.3	337	4.7	489	7.0	564	7.5	305	5.5	321	4.7
25-29	416	2.7	422	2.7	373	5.1	390	5.1	391	6.0	442	6.2	494	7.1	495	6.6	301	5.4	324	6.2
30-34	372	2.4	427	2.7	433	6.0	419	5.5	477	7.3	501	7.0	451	6.5	463	6.1	292	5.2	304	7.0
35-39	438	2.8	418	2.7	507	7.0	563	7.3	429	6.5	462	6.5	411	5.9	410	5.4	273	4.9	312	6.5
40-44	485	3.1	466	3	573	7.9	567	7.4	434	6.6	442	6.2	355	5.1	394	5.2	289	5.2	266	6.2
45-49	595	3.8	586	3.7	475	6.6	503	6.5	380	5.8	392	5.5	381	5.5	367	4.9	254	4.6	330	5.5
50-54	633	4	596	3.8	472	6.5	480	6.2	338	5.1	389	5.5	325	4.7	339	4.5	319	5.7	355	5.5
55-59	495	3.2	528	3.4	413	5.7	436	5.7	348	5.3	366	5.1	330	4.7	458	6.1	326	5.8	360	5.1
60-64	478	3.1	521	3.3	392	5.4	425	5.5	351	5.3	362	5.1	369	5.3	449	5.9	310	5.6	350	5.1
65-69	463	3	463	3	384	5.3	384	5.0	308	4.7	400	5.6	383	5.5	430	5.7	291	5.2	324	5.6
70-74	342	2.2	394	2.5	285	3.9	318	4.1	287	4.4	374	5.2	289	4.2	360	4.8	267	4.8	265	5.2
75-79	279	1.8	276	1.8	206	2.8	313	4.1	230	3.5	329	4.6	189	2.7	272	3.6	190	3.4	199	4.6
80-84	154	1	215	1.4	146	2.0	340	3.1	139	2.1	231	3.2	101	1.4	182	2.4	98	1.8	118	3.2
85+	120	0.8	271	1.7	122	1.7	251	3.3	84	1.3	184	2.6	81	1.2	139	1.8	54	1.0	87	2.6
Total	7,766	49.6	7,891	50.4	7,246	48.5	7,681	51.5	6,572	48.0	7,130	52.0	6,963	48.0	7,554	52.0	5,562	48.5	5,895	51.5

SOURCE: 1970, 1980, 1990, 2000 & 2010 Census, U.S. Census Bureau

**TABLE 2.16 - AGE-SEX COMPOSITION OF THE POPULATION
FOR
GASCONADE COUNTY, 1970 - 2010**

Age Group	2010				2000				1990				1980				1970			
	Number of Males	% of Total Males	Number of Females	% of Total Females	Number of Males	% of Total Males	Number of Females	% of Total Females	Number of Males	% of Total Males	Number of Females	% of Total Females	Number of Males	% of Total Males	Number of Females	% of Total Females	Number of Males	% of Total Males	Number of Females	% of Total Females
0-4	423	2.8	412	2.7	474	6.4	421	5.3	460	6.8	491	6.8	439	6.8	436	5.3	363	6.3	377	6.2
5-9	480	3.2	433	2.8	486	6.5	528	6.7	522	7.7	488	6.7	436	6.8	394	6.7	489	8.4	458	7.5
10-14	492	3.2	510	3.4	573	7.7	605	7.7	491	7.3	489	6.7	482	7.5	441	7.7	542	9.3	524	8.6
15-19	451	3	497	3.3	556	7.5	520	6.6	423	6.3	418	5.8	596	9.3	506	6.6	518	8.9	437	7.2
20-24	368	2.4	338	2.2	338	4.5	351	4.5	346	5.1	369	5.1	434	6.7	416	4.5	278	4.8	306	5.0
25-29	373	2.5	368	2.4	359	4.8	362	4.6	520	7.7	500	6.9	437	6.8	375	4.6	268	4.6	272	4.5
30-34	374	2.5	363	2.4	411	5.5	437	5.5	515	7.6	507	7.0	374	5.8	390	5.5	249	4.3	250	4.1
35-39	400	2.6	405	2.7	628	8.4	557	7.1	478	7.1	423	5.8	325	5.1	334	7.1	256	4.4	300	5.0
40-44	462	3	463	3	626	8.4	588	7.5	429	6.3	419	5.8	298	4.6	304	7.5	322	5.6	312	5.1
45-49	628	4.1	578	3.8	562	7.5	495	6.3	330	4.9	347	4.8	329	5.1	328	6.3	367	6.3	381	6.3
50-54	639	4.2	611	4	468	6.3	485	6.2	319	4.7	331	4.6	339	5.3	369	6.2	361	6.2	429	7.1
55-59	568	3.7	541	3.6	400	5.4	436	5.5	357	5.3	353	4.9	391	6.1	442	5.5	388	6.7	407	6.7
60-64	466	3.1	517	3.4	376	5.0	411	5.2	330	4.9	408	5.6	400	6.2	447	5.2	394	6.8	404	6.6
65-69	416	2.7	457	3	379	5.1	369	4.7	382	5.7	431	6.0	362	5.6	459	4.7	354	6.1	370	6.1
70-74	328	2.2	377	2.5	292	3.9	361	4.6	339	5.0	411	5.7	328	5.1	390	4.6	265	4.6	317	5.2
75-79	252	1.7	312	2	249	3.3	345	4.4	240	3.6	350	4.8	227	3.5	310	4.4	195	3.4	254	4.2
80-84	177	1.2	259	1.7	157	2.1	286	3.6	162	2.4	263	3.6	148	2.3	217	3.6	132	2.3	160	2.6
85+	162	1.1	322	2.1	125	1.7	326	4.1	116	1.7	249	3.4	88	1.4	190	4.1	60	1.0	119	2.0
Total	7,459	49.0	7,763	51.0	7,459	48.6	7,883	51.4	6,759	48.3	7,247	51.7	6,433	48.8	6,748	51.2	5,801	48.8	6,077	51.2

SOURCE: 1970, 1980, 1990, 2000 & 2010 Census, U.S. Census Bureau

**TABLE 2.17 - AGE-SEX COMPOSITION OF THE POPULATION
FOR
MARIES COUNTY, 1970 - 2010**

Age Group	2010				2000				1990				1980				1970			
	Number of Males	% of Total Males	Number of Females	% of Total Females	Number of Males	% of Total Males	Number of Females	% of Total Females	Number of Males	% of Total Males	Number of Females	% of Total Females	Number of Males	% of Total Males	Number of Females	% of Total Females	Number of Males	% of Total Males	Number of Females	% of Total Females
0-4	310	3.4	252	2.7	323	7.2	264	2.0	261	6.6	282	7.0	267	7.0	243	6.5	268	7.7	234	6.2
5-9	288	3.1	298	3.2	345	7.7	286	6.5	288	7.3	267	6.6	294	7.7	268	7.2	336	9.6	306	7.5
10-14	324	3.5	303	3.3	340	7.6	350	7.9	316	8.0	287	7.1	307	8.0	301	8.1	357	10.2	360	8.6
15-19	326	3.6	275	3	326	7.3	290	6.6	312	8.0	271	6.7	404	10.6	323	8.7	337	9.7	269	7.2
20-24	239	2.6	229	2.5	236	5.3	207	4.7	226	5.7	229	5.7	226	5.9	229	6.1	150	4.3	170	5.0
25-29	225	2.5	225	2.5	235	5.2	240	5.4	308	7.8	255	6.3	255	6.7	226	6.1	159	4.6	172	4.5
30-34	256	2.8	227	2.5	258	5.8	278	6.3	261	6.6	274	6.8	233	6.1	236	6.3	164	4.7	170	4.1
35-39	259	2.8	245	2.7	376	8.4	313	7.1	240	6.1	238	5.9	210	5.5	218	5.9	182	5.2	171	5.0
40-44	259	2.8	305	3.3	327	7.3	335	7.6	247	6.3	242	6.0	207	5.4	197	5.3	179	5.1	180	5.1
45-49	406	4.4	357	3.9	305	6.8	279	6.3	227	5.8	271	6.7	194	5.1	187	5.0	207	5.9	195	6.3
50-54	352	3.8	349	3.8	282	6.3	292	6.6	234	6.0	229	5.7	203	5.3	215	5.8	218	6.3	208	7.1
55-59	336	3.7	308	3.4	251	5.6	290	6.6	230	5.8	214	5.3	234	6.1	209	5.6	213	6.1	211	6.7
60-64	292	3.2	285	3.1	250	5.6	230	5.2	205	5.2	213	5.2	214	5.6	214	5.7	194	5.6	217	6.6
65-69	240	2.6	288	3.1	217	4.8	208	4.7	208	5.3	222	5.5	206	5.4	229	6.1	200	5.7	175	6.1
70-74	213	2.3	210	2.3	177	4.0	190	4.3	138	3.5	180	4.5	160	4.2	184	4.9	136	3.9	145	5.2
75-79	153	1.7	157	1.7	126	2.8	151	3.4	131	3.3	156	4.0	120	3.1	122	3.3	103	3.0	93	4.2
80-84	107	1.2	128	1.4	59	1.3	121	2.7	70	2.0	109	2.7	46	1.2	90	2.4	54	1.5	54	2.6
85+	53	0.6	97	1.1	46	1.0	97	2.2	43	1.1	92	2.3	41	1.1	39	1.0	30	0.9	34	2.0
Total	4,638	50.5	4,538	49.5	4,479	50.3	4,424	49.7	3,945	49.5	4,031	50.5	3,821	50.6	3,730	49.4	3,487	50.9	3,364	49.1

SOURCE: 1970, 1980, 1990, 2000 & 2010 Census, U.S. Census Bureau

**TABLE 2.18 - AGE-SEX COMPOSITION OF THE POPULATION
FOR
OSAGE COUNTY, 1970 - 2010**

Age Group	2010				2000				1990				1980				1970			
	Number of Males	% of Total Males	Number of Females	% of Total Females	Number of Males	% of Total Males	Number of Females	% of Total Females	Number of Males	% of Total Males	Number of Females	% of Total Females	Number of Males	% of Total Males	Number of Females	% of Total Females	Number of Males	% of Total Males	Number of Females	% of Total Females
0-4	477	3.4	416	3.0	438	6.6	433	6.7	440	7.1	409	7.0	511	8.4	470	8.0	487	8.8	472	8.6
5-9	486	3.5	502	3.6	493	7.4	461	7.2	475	7.7	501	8.6	461	7.6	486	8.2	602	10.9	584	10.6
10-14	495	3.6	471	3.4	504	7.6	490	7.6	529	8.5	443	7.6	576	9.4	548	9.3	584	10.5	613	11.2
15-19	642	4.6	429	3.1	572	8.6	458	7.1	560	9.1	416	7.2	705	11.5	598	10.2	581	10.5	505	9.3
20-24	469	3.4	341	2.5	469	7.1	366	5.7	503	8.1	365	6.3	511	8.4	432	7.3	310	5.5	307	5.6
25-29	389	2.8	340	2.4	387	5.8	357	5.5	485	7.8	417	7.2	448	7.3	367	6.2	280	5.1	251	4.6
30-34	413	3.0	368	2.7	452	6.8	439	6.8	473	7.6	446	7.7	357	5.9	337	5.7	252	4.6	255	4.7
35-39	438	3.2	404	2.9	561	8.5	473	7.4	444	7.2	369	6.3	317	5.2	306	5.2	259	4.6	235	4.3
40-44	482	3.5	480	3.5	470	7.1	478	7.4	373	6.0	331	5.7	280	4.5	268	4.5	257	4.6	254	4.7
45-49	614	4.4	499	3.6	458	6.9	408	6.3	311	5.0	306	5.3	259	4.2	249	4.2	274	5.0	288	5.3
50-54	519	3.7	484	3.5	387	5.8	353	5.5	283	4.6	275	4.7	286	4.7	267	4.5	283	5.1	292	5.4
55-59	467	3.4	424	3.1	333	5.0	328	5.1	270	4.4	256	4.4	284	4.7	319	5.4	325	5.9	338	6.2
60-64	394	2.8	358	2.6	283	4.3	290	4.5	263	4.3	257	4.4	257	4.2	292	4.9	301	5.4	291	5.3
65-69	296	2.1	296	2.1	265	4.0	268	1.2	255	4.1	305	5.2	292	4.8	302	5.1	255	4.6	249	4.6
70-74	227	1.6	254	1.8	200	3.0	232	3.6	204	3.3	244	4.2	251	4.1	257	4.4	200	3.6	189	3.5
75-79	200	1.4	230	1.7	174	2.6	248	3.9	168	2.7	214	3.6	160	2.6	208	3.5	154	2.8	164	3.0
80-84	122	0.9	160	1.2	102	1.5	155	2.4	90	1.5	142	2.4	88	1.4	119	2.0	83	1.5	101	1.9
85+	89	0.6	203	1.5	80	1.2	197	3.1	68	1.1	128	2.2	64	1.1	82	1.4	53	1.0	66	1.2
Total	7,219	52.0	6,659	48.0	6,628	50.7	6,434	49.3	6,194	51.5	5,824	49.5	6,107	50.7	5,907	49.3	5,540	50.4	5,454	49.6

SOURCE: 1970, 1980, 1990, 2000 & 2010 Census, U.S. Census Bureau

**TABLE 2.19 - AGE-SEX COMPOSITION OF THE POPULATION
FOR
PHELPS COUNTY, 1970 - 2010**

Age Group	2010				2000				1990				1980				1970			
	Number of Males	% of Total Males	Number of Females	% of Total Females	Number of Males	% of Total Males	Number of Females	% of Total Females	Number of Males	% of Total Males	Number of Females	% of Total Females	Number of Males	% of Total Males	Number of Females	% of Total Females	Number of Males	% of Total Males	Number of Females	% of Total Females
0-4	1,471	3.3	1,341	3.0	1,150	5.7	1,111	5.7	1,177	6.5	1,121	6.5	1,056	6.0	1,037	6.5	1,154	7.2	1,147	8.5
5-9	1,340	3.0	1,215	2.7	1,267	6.3	1,244	6.3	1,180	6.5	1,167	6.8	1,121	6.3	1,096	6.9	1,272	7.9	1,232	9.2
10-14	1,405	3.1	1,274	2.8	1,477	7.3	1,423	7.3	1,303	7.2	1,068	6.2	1,273	7.2	1,206	7.5	1,408	8.8	1,244	9.3
15-19	2,357	5.2	1,606	3.6	2,032	10.1	1,508	7.7	1,886	10.4	1,264	7.4	2,471	14.0	1,582	9.9	2,231	13.9	1,124	8.4
20-24	3,608	8.0	1,956	4.3	2,556	12.7	1,467	7.5	2,405	13.3	1,370	8.0	3,125	17.7	1,658	10.4	2,823	17.6	1,272	9.5
25-29	1,631	3.6	1,442	3.2	1,308	6.5	1,096	5.6	1,389	7.7	1,292	8.1	1,256	7.1	1,128	7.1	1,129	7.0	981	7.3
30-34	1,294	2.9	1,166	2.6	1,117	5.5	1,217	6.2	1,300	7.2	1,289	7.5	1,013	5.7	1,036	6.5	800	5.0	745	5.6
35-39	1,214	2.7	1,155	2.6	1,317	6.5	1,421	7.3	1,160	6.4	1,164	6.8	838	4.7	919	5.8	686	4.3	663	4.9
40-44	1,179	2.6	1,254	2.8	1,429	7.1	1,494	7.6	1,093	6.0	1,136	6.6	842	4.8	847	5.3	645	4.0	712	5.3
45-49	1,456	3.2	1,566	3.5	1,257	6.2	1,323	6.8	908	5.0	1,019	5.9	761	4.3	758	4.7	697	4.3	745	5.6
50-54	1,515	3.4	1,583	3.5	1,179	5.8	1,197	6.1	842	4.7	817	4.8	711	4.0	759	4.7	680	4.3	658	4.9
55-59	1,265	2.8	1,325	2.9	941	4.7	1,073	5.5	762	4.2	794	4.6	744	4.2	862	5.4	561	3.5	666	5.0
60-64	1,164	2.6	1,217	2.7	837	4.1	857	4.4	679	3.8	809	4.7	708	4.0	702	4.4	553	3.4	603	4.5
65-69	890	2.0	981	2.2	710	3.5	787	4.0	680	3.8	847	4.9	603	3.4	712	4.5	484	3.0	538	4.0
70-74	655	1.5	772	1.7	578	2.9	750	3.8	567	3.1	634	3.7	486	2.8	640	4.0	388	2.4	436	3.2
75-79	520	1.2	621	1.4	514	2.5	697	3.6	351	2.0	582	3.4	317	1.8	442	2.8	269	1.7	322	2.4
80-84	350	0.8	509	1.1	337	1.7	455	2.3	259	1.4	468	2.7	185	1.1	321	2.0	165	1.0	184	1.3
85+	304	0.7	555	1.2	219	1.1	480	2.4	145	0.8	321	1.9	161	0.9	257	1.6	115	0.7	149	1.1
Total	23,618	52.3	21,538	47.7	20,225	50.8	19,600	49.2	18,086	51.3	17,162	48.7	17,671	52.5	15,962	47.5	16,060	54.5	13,421	45.5

SOURCE: 1970, 1980, 1990, 2000 & 2010 Census, U.S. Census Bureau

**TABLE 2.20 - AGE-SEX COMPOSITION OF THE POPULATION
FOR
PULASKI COUNTY, 1970 - 2010**

Age Group	2010				2000				1990				1980				1970			
	Number of Males	% of Total Males	Number of Females	% of Total Females	Number of Males	% of Total Males	Number of Females	% of Total Females	Number of Males	% of Total Males	Number of Females	% of Total Females	Number of Males	% of Total Males	Number of Females	% of Total Females	Number of Males	% of Total Males	Number of Females	% of Total Females
0-4	1,995	3.8	1,949	3.7	1,585	7.3	1,569	8.1	1,885	8.2	1,765	9.6	1,611	6.4	1,547	9.2	1,792	4.8	1,759	11.1
5-9	1,714	3.3	1,632	3.1	1,654	7.6	1,585	8.2	1,879	8.7	1,720	9.3	1,441	5.7	1,432	8.5	1,803	4.8	1,770	11.1
10-14	1,652	3.2	1,592	3.0	1,625	7.5	1,551	8.0	1,561	7.3	1,452	7.9	1,328	5.3	1,255	7.5	1,836	4.9	1,649	10.4
15-19	4,200	8.0	2,021	3.9	2,719	12.5	1,664	8.6	2,812	10.1	1,354	7.3	6,744	26.8	1,853	11.0	9,845	26.1	1,545	9.7
20-24	5,259	10.1	2,376	4.5	2,674	12.3	1,558	8.0	3,117	11.1	1,484	8.0	5,794	23.0	2,138	12.7	14,436	38.3	2,114	13.3
25-29	3,013	5.8	2,109	4.0	1,891	8.7	1,610	8.3	2,393	10.5	2,002	10.9	2,099	8.3	1,694	10.1	2,153	5.7	1,309	8.2
30-34	2,085	4.0	1,727	3.3	1,787	8.2	1,636	8.4	2,342	10.2	1,877	10.2	1,574	6.2	1,324	7.9	1,120	3.0	1,098	6.9
35-39	1,729	3.3	1,503	2.9	1,789	8.2	1,608	8.3	1,838	8.0	1,404	7.6	1,045	4.1	1,004	6.0	1,150	3.1	988	6.2
40-44	1,463	2.8	1,397	2.7	1,472	6.8	1,394	7.2	1,360	5.9	1,082	5.9	819	3.2	777	4.6	932	2.5	802	5.0
45-49	1,415	2.7	1,445	2.8	1,054	4.8	1,090	5.6	829	3.6	766	4.2	733	2.9	688	4.1	666	1.8	620	3.9
50-54	1,294	2.5	1,257	2.4	910	4.2	945	4.9	612	2.7	664	3.6	621	2.5	656	3.9	545	1.4	520	3.3
55-59	955	1.8	1,059	2.0	662	3.0	706	3.6	587	2.6	622	3.4	550	2.2	574	3.4	441	1.2	424	2.7
60-64	809	1.5	856	1.6	541	2.5	629	3.2	509	2.2	599	3.2	460	1.8	491	2.9	355	0.9	389	2.4
65-69	564	1.1	683	1.3	534	2.5	533	2.7	418	1.8	492	2.7	386	1.5	442	2.6	270	0.7	306	1.9
70-74	425	0.8	508	1.0	379	1.7	480	2.5	296	1.3	386	2.1	267	1.1	357	2.1	210	0.6	251	1.6
75+													317	1.3	570	3.4	309	0.8	374	2.3
75-79	334	0.6	397	0.8	256	1.2	354	1.8	226	1.0	324	1.8								
80-84	203	0.4	298	0.6	133	0.6	256	1.3	125	0.5	236	1.3								
85+	103	0.2	253	0.5	88	0.4	244	1.3	82	0.4	207	1.1								
Total	29,212	55.9	23,062	44.1	21,753	52.8	19,412	47.2	22,871	55.4	18,436	44.6	25,209	60.0	16,802	40.0	37,863	70.4	15,918	29.6

SOURCE: 1970, 1980, 1990, 2000 & 2010 Census, U.S. Census Bureau

**TABLE 2.21 - AGE-SEX COMPOSITION OF THE POPULATION
FOR
WASHINGTON COUNTY, 1970 - 2010**

Age Group	2010				2000				1990				1980				1970			
	Number of Males	% of Total Males	Number of Females	% of Total Females	Number of Males	% of Total Males	Number of Females	% of Total Females	Number of Males	% of Total Males	Number of Females	% of Total Females	Number of Males	% of Total Males	Number of Females	% of Total Females	Number of Males	% of Total Males	Number of Females	% of Total Females
0-4	811	3.2	840	3.3	780	6.5	765	6.8	788	7.6	758	7.6	820	9.2	743	6.8	715	9.5	666	7.6
5-9	857	3.4	794	3.2	825	6.9	817	7.2	893	8.6	800	8.0	854	9.6	802	7.2	850	11.3	894	8.0
10-14	874	3.5	827	3.3	955	7.9	876	7.7	967	9.3	825	8.2	870	9.8	822	7.7	920	12.2	847	8.2
15-19	814	3.2	860	3.4	1,005	8.4	866	7.7	885	8.5	826	8.2	910	10.2	925	7.7	788	10.5	701	8.2
20-24	761	3.0	689	2.7	886	7.4	711	6.3	691	6.7	618	6.2	673	7.6	694	6.3	448	6.0	528	6.2
25-29	829	3.3	705	2.8	830	6.9	743	6.6	858	8.3	775	7.7	648	7.3	642	6.6	431	5.7	443	7.7
30-34	837	3.3	719	2.9	843	7.0	701	6.2	868	8.4	763	7.6	601	6.8	640	6.2	409	5.4	396	7.6
35-39	895	3.6	786	3.1	1,020	8.5	855	7.6	738	7.1	704	7.0	499	5.6	528	7.6	390	5.2	389	7.0
40-44	927	3.7	765	3.0	972	8.1	854	7.6	674	6.5	666	6.6	477	5.4	462	7.6	350	4.7	369	6.6
45-49	1,135	4.5	955	3.8	808	6.7	784	6.9	593	5.7	558	5.6	428	4.8	457	6.9	348	4.6	356	5.6
50-54	1,032	4.1	939	3.7	732	6.1	699	6.2	796	4.8	487	4.9	400	4.5	385	6.2	315	4.2	378	4.9
55-59	846	3.4	861	3.4	615	5.1	608	5.4	479	4.6	479	4.8	419	4.7	428	5.4	375	5.0	347	4.8
60-64	721	2.9	738	2.9	528	4.4	533	4.7	409	3.9	414	4.1	331	3.7	451	4.7	351	4.7	393	4.1
65-69	569	2.3	603	2.4	476	4.0	476	4.2	386	3.7	381	3.8	368	4.1	366	4.2	317	4.2	334	3.8
70-74	458	1.8	450	1.8	332	2.8	359	3.2	247	2.4	355	3.5	283	3.2	327	3.2	220	2.9	223	3.5
75-79	290	1.2	350	1.4	242	2.0	274	2.4	208	2.0	267	2.7	179	2.0	226	2.4	167	2.2	164	2.7
80-84	174	0.7	217	0.9	103	0.9	200	1.8	109	1.1	196	2.0	76	0.8	112	1.8	88	1.2	95	2.0
85+	94	0.4	173	0.7	84	0.7	187	1.7	69	0.6	150	1.5	59	0.7	78	1.7	37	0.5	44	1.5
Total	12,924	51.3	12,271	48.7	12,036	51.6	11,308	48.4	10,358	50.8	10,022	49.2	8,895	49.5	9,088	50.5	7,519	49.8	7,567	50.2

SOURCE: 1970, 1980, 1990, 2000 & 2010 Census, U.S. Census Bureau

**TABLE 2.22 - AGE-SEX COMPOSITION OF THE POPULATION
FOR THE
MERAMEC REGION, 1970 - 2010**

Age Group	2010				2000				1990				1980				1970			
	Number of Males	% of Total Males	Number of Females	% of Total Females	Number of Males	% of Total Males	Number of Females	% of Total Females	Number of Males	% of Total Males	Number of Females	% of Total Females	Number of Males	% of Total Males	Number of Females	% of Total Females	Number of Males	% of Total Males	Number of Females	% of Total Females
0-4	6,787	6.5	6,536	6.8	5,997	6.6	5,760	6.5	6,125	7.3	5,859	7.4	5,965	7.1	5,681	7.6	5,816	6.5	5,680	8.7
5-9	6,557	6.2	6,129	6.4	6,389	7.0	6,237	7.1	6,542	7.8	6,191	7.8	5,904	7.0	5,737	7.6	6,578	7.4	6,458	9.9
10-14	6,678	6.4	6,263	6.5	6,968	7.7	6,636	7.5	6,484	7.7	5,817	7.3	6,165	7.3	5,854	7.8	7,045	7.9	6,649	10.2
15-19	10,111	9.6	6,989	7.3	8,635	9.5	6,648	7.5	8,078	9.6	5,683	7.1	13,297	15.8	7,190	9.6	15,385	17.3	5,648	8.6
20-24	11,797	11.2	6,994	7.3	8,127	8.9	5,661	6.4	8,119	9.7	5,281	6.6	11,303	13.4	6,789	9.0	19,069	21.4	5,445	8.3
25-29	7,605	7.2	6,304	6.6	5,970	6.6	5,451	6.1	7,003	8.3	6,360	8.0	6,191	7.4	5,512	7.3	5,116	5.7	4,147	6.3
30-34	6,315	6.0	5,690	5.9	5,991	6.6	5,824	6.6	6,960	8.3	6,390	8.0	5,147	6.1	5,011	6.7	3,631	4.1	3,608	5.5
35-39	6,072	5.8	5,585	5.8	7,065	7.8	6,671	7.6	5,940	7.1	5,417	6.8	4,164	5.0	4,219	5.6	3,581	4.0	3,418	5.2
40-44	6,065	5.8	5,907	6.1	6,782	7.4	6,601	7.5	5,186	6.2	4,914	6.2	3,723	4.4	3,707	4.9	3,356	3.8	3,275	5.0
45-49	7,213	6.9	6,913	7.2	5,651	6.2	5,640	6.4	4,075	4.8	4,158	5.2	3,532	4.2	3,493	4.6	3,144	3.5	3,342	5.1
50-54	6,973	6.6	6,758	7	5,121	5.6	5,155	5.8	3,620	4.3	3,723	4.7	3,329	4.0	3,463	4.6	3,087	3.5	3,199	4.9
55-59	5,735	5.5	5,879	6.1	4,214	4.6	4,475	5.1	3,527	4.2	3,581	4.5	3,369	4.0	3,808	5.1	3,013	3.4	3,177	4.9
60-64	5,056	4.8	5,261	5.5	3,800	4.2	3,969	4.5	3,221	3.8	3,567	4.5	3,187	3.8	3,545	4.7	2,852	3.2	3,111	4.8
65-69	4,069	3.9	4,412	4.6	3,457	3.8	3,578	4.1	3,070	3.6	3,615	3.8	3,112	3.7	3,467	4.6	2,593	2.9	2,714	4.2
70-74	3,130	3.0	3,473	3.6	2,703	3.0	3,152	3.6	2,466	2.9	3,027	3.8	2,450	2.9	2,978	4.0	1,984	2.2	2,173	3.3
75+	4,964	4.7	7,034	7.3	4,201	4.6	6,879	7.8	3,707	4.4	6,104	7.7	3,202	3.8	4,696	6.2	2,786	3.1	3,277	5.0
Total	105,127	52.2	96,127	47.8	91,071	50.8	88,337	49.2	84,123	50.2	79,687	49.8	84,040	52.8	75,150	47.2	89,036	57.7	65,321	42.3

SOURCE: 1970, 1980, 1990, 2000 & 2010 Census, U.S. Census Bureau

**TABLE 2.23 - MEDIAN AGE IN YEARS
1970 - 2010**

Area	2010			2000			1990			1980			1970		
	Male	Female	Total	Male	Female	Total	Male	Female	Total	Male	Female	Total	Male	Female	Total
CRAWFORD	39.9	41.4	40.6	37.5	38.6	37.8	34.2	36.8	35.5	32.0	34.4	33.2	31.9	33.2	32.6
DENT	41.8	44.1	43.0	38.5	40.8	39.6	35.5	40.0	37.6	32.0	35.3	33.7	33.1	35.3	34.2
GASCONADE	44.0	45.7	45.0	40.3	39.3	41.3	36.1	40.1	38.0	35.2	41.1	38.2	38.8	41.8	40.4
MARIES	41.7	43.5	42.8	37.5	39.8	38.5	35.0	38.1	36.6	33.2	36.1	34.6	34.2	35.0	34.6
OSAGE	37.8	40.6	39.3	35.0	37.2	36.1	30.9	33.9	32.3	28.1	30.6	29.1	28.7	29.9	29.3
PHELPS	30.0	38.5	33.8	33.4	38.8	36.2	28.9	35.1	31.9	24.4	31.2	27.8	23.5	28.5	24.8
PULASKI	24.7	29.7	26.6	26.7	30.5	28.5	25.4	28.7	26.9	20.9	25.5	22.1	24.6	25.4	21.5
WASHINGTON	38.8	39.5	39.2	31.4	37.7	34.9	31.0	32.9	31.9	27.5	29.4	28.4	25.4	26.7	26.1
REGION	37.3	40.4	38.9	35.0	37.8	36.6	33.1	36.7	33.9	30.4	33.0	30.9	30.0	32.0	30.4
MISSOURI	36.5	39.2	37.9	34.8	37.4	36.1	32.1	34.9	33.5	39.3	32.3	30.8	27.9	31.8	29.4
U.S.	35.8	38.5	37.2	34.0	36.5	35.3	31.6	34.0	32.8	28.8	31.3	30.3	26.8	29.3	28.0

SOURCE: U.S. Census of Population 1970-2010, Census Bureau, U.S. Department of Commerce

**TABLE 2.24 - RURAL-URBAN RESIDENCY STATUS 1960 - 2010
CRAWFORD COUNTY**

Year	Total Population	URBAN CLUSTER		RURAL	
		Number	% of Total	Number	% of Total
2010	24,696	6,592	26.7%	18,104	73.3%
2000	22,804	4,644	20.4%	18,160	79.6%
1990	19,173	3,654	19.1%	15,519	80.9%
1980	18,300	1,025	5.6%	17,275	94.4%
1970	14,828	1,058	7.1%	13,770	92.9%
1960	12,647	656	5.2%	11,991	94.8%

Source: U.S. Census of Population 1960-2010, Census Bureau, U.S. Department of Commerce

**TABLE 2.25 - RURAL-URBAN RESIDENCY STATUS 1960 - 2010
DENT COUNTY**

Year	Total Population	URBAN CLUSTER		RURAL	
		Number	% of Total	Number	% of Total
2010	15,657	4,921	31.4%	10,736	68.6%
2000	14,927	4,854	32.5%	10,073	67.5%
1990	13,702	4,486	32.7%	9,216	67.3%
1980	14,517	4,457	30.7%	10,060	69.3%
1970	11,457	4,363	38.1%	7,094	61.9%
1960	10,445	3,870	37.1%	6,575	62.9%

Source: U.S. Census of Population 1960-2010, Census Bureau, U.S. Department of Commerce

**TABLE 2.26 - RURAL-URBAN RESIDENCY STATUS 1960 - 2010
GASCONADE COUNTY**

Year	Total Population	URBAN CLUSTER		RURAL	
		Number	% of Total	Number	% of Total
2010	15,222	2,912	19.1%	12,310	80.9%
2000	15,342	5,174	33.7%	10,168	66.3%
1990	14,006	2,754	19.7%	11,252	80.3%
1980	13,181	2,689	20.4%	10,492	79.6%
1970	11,878	2,658	22.4%	9,220	77.6%
1960	12,195	2,536	20.8%	9,659	79.2%

Source: U.S. Census of Population 1960-2010, Census Bureau, U.S. Department of Commerce

**TABLE 2.27 - RURAL-URBAN RESIDENCY STATUS 1960 - 2010
MARIES COUNTY**

Year	Total Population	URBAN CLUSTER		RURAL	
		Number	% of Total	Number	% of Total
2010	9,176	0	0.0%	9,176	100.0%
2000	8,903	0	0.0%	8,903	100.0%
1990	7,976	0	0.0%	7,976	100.0%
1980	7,551	0	0.0%	7,551	100.0%
1970	6,851	0	0.0%	6,851	100.0%
1960	7,282	0	0.0%	7,282	100.0%

Source: U.S. Census of Population 1960-2010, Census Bureau, U.S. Department of Commerce

**TABLE 2.28 - RURAL-URBAN RESIDENCY STATUS 1960 - 2010
OSAGE COUNTY**

Year	Total Population	URBAN CLUSTER		RURAL	
		Number	% of Total	Number	% of Total
2010	13,878	0	0.0%	13,878	100.0%
2000	13,062	0	0.0%	13,062	100.0%
1990	12,018	0	0.0%	12,018	100.0%
1980	12,014	0	0.0%	12,014	100.0%
1970	10,994	0	0.0%	10,994	100.0%
1960	10,867	0	0.0%	10,867	100.0%

Source: U.S. Census of Population 1960-2010, Census Bureau, U.S. Department of Commerce

**TABLE 2.29 - RURAL-URBAN RESIDENCY STATUS 1960 - 2010
PHELPS COUNTY**

Year	Total Population	URBAN CLUSTER		RURAL	
		Number	% of Total	Number	% of Total
2010	45,156	24,283	53.8%	20,873	46.2%
2000	39,825	20,071	50.4%	19,754	49.6%
1990	35,248	17,346	49.2%	17,902	50.8%
1980	33,633	16,615	49.4%	17,018	50.6%
1970	29,481	16,032	54.4%	13,449	45.6%
1960	25,396	11,132	43.8%	14,264	56.2%

Source: U.S. Census of Population 1960-2010, Census Bureau, U.S. Department of Commerce

**TABLE 2.30 - RURAL-URBAN RESIDENCY STATUS 1960 - 2010
PULASKI COUNTY**

Year	Total Population	URBAN CLUSTER		RURAL	
		Number	% of Total	Number	% of Total
2010	52,274	29,257	56.0%	23,017	44.0%
2000	41,165	20,943	50.9%	20,222	49.1%
1990	41,307	19,070	46.2%	22,237	53.8%
1980	42,011	24,141	57.5%	17,870	42.5%
1970	53,781	37,174	69.1%	16,607	30.9%
1960	46,567	0	0.0%	46,567	100.0%

Source: U.S. Census of Population 1960-2010, Census Bureau, U.S. Department of Commerce

**TABLE 2.31 - RURAL-URBAN RESIDENCY STATUS 1960 - 2010
WASHINGTON COUNTY**

Year	Total Population	URBAN CLUSTER		RURAL	
		Number	% of Total	Number	% of Total
2010	25,195	4,919	19.5%	20,276	80.5%
2000	23,344	2,662	11.4%	20,682	88.6%
1990	20,380	2,683	13.2%	17,697	86.8%
1980	17,983	2,528	14.1%	15,455	85.9%
1970	15,086	2,761	18.3%	12,325	81.7%
1960	14,346	2,805	19.6%	11,541	80.4%

Source: U.S. Census of Population 1960-2010, Census Bureau, U.S. Department of Commerce

**TABLE 2.32 - RURAL-URBAN RESIDENCY STATUS 1960 - 2010
MERAMEC REGION**

Year	Total Population	URBAN CLUSTER		RURAL	
		Number	% of Total	Number	% of Total
2010	201,254	72,884	36.2%	128,370	63.8%
2000	179,372	58,348	32.5%	121,024	67.5%
1990	163,810	49,993	30.5%	113,817	69.5%
1980	159,190	51,455	32.3%	107,735	67.7%
1970	154,356	64,046	41.5%	90,310	58.5%
1960	139,745	20,999	15.0%	118,746	84.9%

Source: U.S. Census of Population 1960-2010, Census Bureau, U.S. Department of Commerce

**TABLE 2.33 - RURAL-URBAN RESIDENCY STATUS 1960 - 2010
MISSOURI**

		URBAN CLUSTER		RURAL	
Year	Total Population	Number	% of Total	Number	% of Total
2010	5,988,927	4,218,371	70.4%	1,770,556	29.6%
2000	5,595,211	3,881,133	69.4%	1,714,078	30.6%
1990	5,117,073	3,516,009	68.7%	1,601,064	31.3%
1980	4,916,686	3,348,263	68.1%	1,568,423	31.9%
1970	4,677,623	3,125,718	67.4%	1,524,905	32.6%
1960	4,319,813	2,876,557	66.6%	1,443,256	33.4%

Source: U.S. Census of Population 1960-2010, Census Bureau, U.S. Department of Commerce

**TABLE 2.34 - RURAL-URBAN RESIDENCY STATUS 1960 - 2010
UNITED STATES**

		URBAN CLUSTER		RURAL	
Year	Total Population	Number	% of Total	Number	% of Total
2010	308,745,609	249,253,271	80.7%	59,492,267	19.3%
2000	281,421,906	222,358,309	79.0%	59,063,597	21.0%
1990	248,709,873	187,053,487	75.2%	61,656,386	24.8%
1980	226,545,805	166,964,258	73.7%	59,581,547	26.3%
1970	203,302,031	153,696,335	75.6%	49,605,696	24.4%
1960	179,323,175	125,268,750	69.9%	54,054,425	30.1%

Source: U.S. Census of Population 1960-2010, Census Bureau, U.S. Department of Commerce

**TABLE 2.35 - RACIAL GROUPS
2010**

Area	Total Population Estimate	White Alone	Black / African American Alone	American Indian/AK Native Alone	Asian Alone	Hawaiian/ Pacific Islander Alone	Some Other Race Alone	Two or More Races	% White	% Non-White
CRAWFORD	24,640	24,118	60	120	33	0	0	309	97.88%	2.12%
DENT	15,497	14,941	116	184	56	7	34	159	96.41%	3.59%
GASCONADE	15,334	15,008	9	127	51	0	21	118	97.87%	2.13%
MARIES	9,203	8,992	145	11	0	0	44	11	97.71%	2.29%
OSAGE	13,768	13,608	79	0	11	0	5	65	98.84%	1.16%
PHELPS	44,473	40,728	1,072	327	1,300	0	541	505	91.58%	8.42%
PULASKI	49,114	37,975	5,785	437	1,508	263	1,649	1,497	77.32%	22.68%
WASHINGTON	24,981	23,871	556	98	36	0	129	291	95.56%	4.44%
REGION	197,010	179,241	7,822	1,304	2,995	270	2,423	2,955	90.98%	9.02%
MISSOURI	5,922,314	4,938,222	679,062	22,829	92,147	5,201	61,101	123,752	83.38%	16.62%
U.S.	303,965,272	224,895,700	37,978,752	2,480,465	14,185,493	491,673	16,603,808	7,329,381	73.99%	26.01%

SOURCE: U.S. Census Bureau, 2006-2010 American Community Survey

**TABLE 2.36 - RACIAL GROUPS
2000**

Area	Total Population	White Alone	Black/African American Alone	American Indian/AK Native Alone	Asian Alone	Hawaiian/Pacific Islander Alone	Some Other Race Alone	Two or More Races	% White	% Non-White
CRAWFORD	22,804	22,408	33	99	30	14	32	188	98.26%	1.74%
DENT	14,927	14,489	59	109	32	2	25	211	97.07%	4.67%
GASCONADE	15,342	15,141	18	28	24	1	22	108	98.69%	1.31%
MARIES	8,903	8,674	29	49	10	0	31	110	97.43%	2.57%
OSAGE	13,062	12,884	21	31	10	3	9	104	98.64%	1.36%
PHELPS	39,825	37,132	596	236	936	25	186	714	93.24%	6.76%
PULASKI	41,165	32,254	4,935	413	936	130	1,028	1,469	78.40%	21.60%
WASHINGTON	23,344	22,286	578	155	35	2	36	252	95.47%	4.53%
REGION	179,372	165,268	6,269	1,120	2,013	177	1,369	3,156	92.10%	7.90%
MISSOURI	5,595,211	4,748,083	629,391	25,076	61,595	41,277	21,525	82,061	84.86%	15.14%
U.S.	281,421,906	211,460,626	34,658,190	2,475,956	10,242,998	7,273,662	11,764,081	6,826,228	75.14%	24.86%

SOURCE: 2000 Census of Population, Bureau of the Census, US Department of Commerce

**TABLE 2.37 - RACIAL GROUPS
1990**

Area	Total Population	White Alone	Non-White	Black/African American Alone	American Indian/AK Native Alone	Asian/Pacific Islander	Other	% White	% Non-White
CRAWFORD	19,173	19,092	81	3	36	30	12	99.57%	0.43%
DENT	13,702	13,568	134	10	67	33	24	99.02%	0.98%
GASCONADE	14,006	13,947	59	11	22	17	9	99.58%	0.42%
MARIES	7,976	7,909	67	27	19	10	11	99.16%	0.84%
OSAGE	12,018	11,940	78	38	148	783	105	99.35%	0.65%
PHELPS	35,248	33,815	1,433	397	21	2	18	95.93%	4.07%
PULASKI	41,307	33,139	8,168	5,608	261	1,209	1,090	80.23%	19.77%
WASHINGTON	20,380	19,914	466	378	47	23	17	97.71%	2.29%
REGION	163,810	153,324	10,486	6,472	621	2,107	1,286	93.60%	6.40%
MISSOURI	5,117,073	4,486,228	630,845	548,208	19,835	41,277	21,525	87.70%	12.30%
U.S.	248,709,873	199,686,070	49,023,803	29,986,060	**	7,273,662	11,764,081	80.30%	19.70%

** Included in Other

SOURCE: 1990 Census of Population, Bureau of the Census, US Department of Commerce

**TABLE 2.38 - RACIAL GROUPS
1980**

Area	Total Population	White Alone	Black/African American Alone	American Indian/AK Native Alone	* Asian/Pacific Islander	** Other	% White	% Non-White
CRAWFORD	18,300	18,207	0	60	33	0	99.49%	0.51%
DENT	14,517	14,436	0	23	41	17	99.44%	0.56%
GASCONADE	13,181	13,140	0	0	41	0	99.69%	0.31%
MARIES	7,551	7,533	0	5	5	8	99.76%	0.24%
OSAGE	12,014	11,971	3	23	17	0	99.64%	0.36%
PHELPS	33,633	32,691	333	77	330	202	97.20%	2.80%
PULASKI	42,011	35,027	4,702	431	944	907	83.48%	16.52%
WASHINGTON	17,983	17,807	99	68	2	7	99.02%	0.98%
REGION	159,190	150,812	5,137	687	1,413	1,141	94.70%	5.30%
MISSOURI	4,916,686	4,348,317	568,369	14,750	25,075	15,242	88.40%	1.56%
U.S.	226,545,805	189,029,820	37,515,915	1,540,511	3,715,351	5,776,918	83.44%	16.56%

* Asian Alone, Hawaiian/Pacific Islander were combined in the 1980 Census

** All other races not previously listed were combined in the 1980 Census

SOURCE: 1980 Census of Population, Bureau of the Census, US Department of Commerce

**TABLE 2.39 - RACIAL GROUPS
1970**

Area	Total Population	White Alone	Black/African American Alone	*Other	% White	% Non-White
CRAWFORD	14,828	14,796	7	25	99.78%	0.22%
DENT	11,457	11,438	1	18	99.83%	0.17%
GASCONADE	11,878	11,849	13	16	96.73%	3.27%
MARIES	6,851	6,847	0	4	99.94%	0.06%
OSAGE	10,994	10,978	3	13	99.85%	0.15%
PHELPS	29,481	28,902	194	385	98.04%	1.96%
PULASKI	53,781	48,849	4,099	833	90.81%	9.19%
WASHINGTON	15,086	14,951	113	22	99.11%	0.89%
REGION	154,356	148,610	4,430	1,316	96.28%	3.72%
MISSOURI	4,676,501	4,177,495	480,172	18,834	89.33%	10.67%
U.S.	203,211,926	177,748,975	22,580,289	2,882,662	87.47%	12.53%

* Other includes Indian, Japanese, Chinese, Filipino and all other races

SOURCE: 1970 Census of Population, Bureau of the Census, US Department of Commerce

**TABLE 2.40 - FAMILY INCOME CRAWFORD COUNTY
FOR 1979 - 2011**

	*2011		1999		1989		1979	
	#	%	#	%	#	%	#	%
Under \$5,000					208	3.8%	494	9.6%
\$5,000-\$9,999					459	8.4%	1,244	24.0%
Under \$10,000	814	8.6%	1,183	13.3%				
\$10,000-\$14,000			900	10.1%				
\$10,000-\$14,999	764	8.1%						
\$10,000-\$24,999					2,271	41.5%	1,950	37.7%
\$15,000-\$19,999	731	7.7%	887	10.0%				
\$20,000-\$24,999	917	9.7%	650	7.3%				
\$25,000-\$29,999	824	8.7%	688	7.8%				
\$25,000-\$34,999					1,163	21.3%	1,197	23.1%
\$30,000-\$34,999	768	8.1%	679	7.7%				
\$35,000 & Over			3,883	4.3%	1,365	25.0%	292	5.6%
\$35,000-\$39,999	464	5.2%						
\$40,000-\$44,999	547	5.8%						
\$45,000-\$49,999	638	6.7%						
\$50,000-\$59,999	939	9.9%						
\$60,000-\$74,999	867	9.2%						
\$75,000-\$99,999	726	7.7%						
\$100,000-\$124,999	203	2.1%						
\$125,000-\$149,999	52	0.5%						
\$150,000-\$199,999	138	1.5%						
\$200,000 & Over	45	0.5%						

SOURCE: U.S. Census of Population 1980-2010 Census Bureau, U.S. Department of Commerce
SOURCE: U.S. Census Bureau, 2009-2011 American Community Survey

**TABLE 2.41 - FAMILY INCOME DENT COUNTY
FOR 1979 - 2011**

	*2011		1999		1989		1979	
	#	%	#	%	#	%	#	%
Under \$5,000					303	7.5%	503	11.9%
\$5,000-\$9,999					506	12.6%	1,008	23.9%
Under \$10,000	591	9.7%	877	14.6%				
\$10,000-\$14,000			644	10.7%				
\$10,000-\$14,999	551	9.0%						
\$10,000-\$24,999					1,550	38.6%	1,614	38.3%
\$15,000-\$19,999	333	5.4%	605	10.1%				
\$20,000-\$24,999	449	7.3%	650	10.8%				
\$25,000-\$29,999	573	9.4%	451	7.5%				
\$25,000-\$34,999					632	15.7%	851	20.2%
\$30,000-\$34,999	468	7.6%	454	7.0%				
\$35,000 & Over			2,336	38.8%	1,024	25.5%	241	5.7%
\$35,000-\$39,999	442	7.2%						
\$40,000-\$44,999	281	4.6%						
\$45,000-\$49,999	326	5.3%						
\$50,000-\$59,999	535	8.7%						
\$60,000-\$74,999	708	11.6%						
\$75,000-\$99,999	518	8.5%						
\$100,000-\$124,999	164	2.7%						
\$125,000-\$149,999	149	2.4%						
\$150,000-\$199,999	10	0.1%						
\$200,000 & Over	26	0.4%						

SOURCE: U.S. Census of Population 1980-2010 Census Bureau, U.S. Department of Commerce

SOURCE: U.S. Census Bureau, 2009-2011 American Community Survey

**TABLE 2.42 - FAMILY INCOME GASCONADE COUNTY
FOR 1979 - 2011**

	*2011		1999		1989		1979	
	#	%	#	%	#	%	#	%
Under \$5,000					92	2.3%	309	8.1%
\$5,000-\$9,999					293	7.4%	680	17.7%
Under \$10,000	474	7.3%	632	10.2%				
\$10,000-\$14,000			435	7.0%				
\$10,000-\$14,999	466	7.2%						
\$10,000-\$24,999					1,378	34.7%	1,533	40.0%
\$15,000-\$19,999	382	5.9%	505	8.2%				
\$20,000-\$24,999	399	6.2%	518	8.4%				
\$25,000-\$29,999	469	7.2%	482	7.8%				
\$25,000-\$34,999					845	21.3%	1,011	26.4%
\$30,000-\$34,999	484	7.5%	517	8.4%				
\$35,000 & Over			3,099	50.1%	1,360	34.3%	297	7.8%
\$35,000-\$39,999	479	7.4%						
\$40,000-\$44,999	418	6.5%						
\$45,000-\$49,999	385	6.0%						
\$50,000-\$59,999	479	7.4%						
\$60,000-\$74,999	783	12.1%						
\$75,000-\$99,999	649	10.0%						
\$100,000-\$124,999	352	5.4%						
\$125,000-\$149,999	133	2.1%						
\$150,000-\$199,999	56	0.9%						
\$200,000 & Over	62	1.0%						

SOURCE: U.S. Census of Population 1980-2010 Census Bureau, U.S. Department of Commerce

SOURCE: U.S. Census Bureau, 2009-2011 American Community Survey

**TABLE 2.43 - FAMILY INCOME MARIES COUNTY
FOR 1979 - 2011**

	*2011		1999		1989		1979	
	#	%	#	%	#	%	#	%
Under \$5,000					110	4.8%	248	11.5%
\$5,000-\$9,999					190	8.3%	438	20.3%
Under \$10,000	320	8.9%	420	11.9%				
\$10,000-\$14,000			327	9.2%				
\$10,000-\$14,999	231	6.4%						
\$10,000-\$24,999					929	40.7%	894	41.5%
\$15,000-\$19,999	256	7.1%	280	7.9%				
\$20,000-\$24,999	413	11.4%	352	10.0%				
\$25,000-\$29,999	167	4.6%	292	8.3%				
\$25,000-\$34,999					480	21.1%	479	22.2%
\$30,000-\$34,999	185	5.1%	259	7.3%				
\$35,000 & Over			1,606	45.4%	571	25.0%	96	4.5%
\$35,000-\$39,999	221	6.1%						
\$40,000-\$44,999	254	7.0%						
\$45,000-\$49,999	133	3.7%						
\$50,000-\$59,999	584	16.2%						
\$60,000-\$74,999	321	8.9%						
\$75,000-\$99,999	297	8.2%						
\$100,000-\$124,999	61	1.7%						
\$125,000-\$149,999	90	2.5%						
\$150,000-\$199,999	66	1.8%						
\$200,000 & Over	16	0.4%						

SOURCE: U.S. Census of Population 1980-2010 Census Bureau, U.S. Department of Commerce

SOURCE: U.S. Census Bureau, 2009-2011 American Community Survey

**TABLE 2.44 - FAMILY INCOME OSAGE COUNTY
FOR 1979 - 2011**

	*2011		1999		1989		1979	
	#	%	#	%	#	%	#	%
Under \$5,000					61	1.9%	278	8.8%
\$5,000-\$9,999					181	5.6%	486	15.4%
Under \$10,000	283	5.3%	486	9.8%				
\$10,000-\$14,000			318	6.4%				
\$10,000-\$14,999	361	6.8%						
\$10,000-\$24,999					979	30.0%	1,184	37.5%
\$15,000-\$19,999	282	5.3%	331	6.7%				
\$20,000-\$24,999	296	5.6%	315	6.4%				
\$25,000-\$29,999	315	5.9%	434	8.8%				
\$25,000-\$34,999					687	21.0%	921	29.2%
\$30,000-\$34,999	392	7.4%	288	5.8%				
\$35,000 & Over			2,784	56.2%	1,329	41.5%	286	9.1%
\$35,000-\$39,999	276	5.2%						
\$40,000-\$44,999	384	7.2%						
\$45,000-\$49,999	295	5.6%						
\$50,000-\$59,999	569	10.7%						
\$60,000-\$74,999	569	10.7%						
\$75,000-\$99,999	691	13.0%						
\$100,000-\$124,999	331	6.2%						
\$125,000-\$149,999	131	2.5%						
\$150,000-\$199,999	52	1.0%						
\$200,000 & Over	74	1.4%						

SOURCE: U.S. Census of Population 1980-2010 Census Bureau, U.S. Department of Commerce

SOURCE: U.S. Census Bureau, 2009-2011 American Community Survey

**TABLE 2.45 - FAMILY INCOME PHELPS COUNTY
FOR 1979 - 2011**

	*2011		1999		1989		1979	
	#	%	#	%	#	%	#	%
Under \$5,000					473	5.1%	741	8.8%
\$5,000-\$9,999					801	8.6%	1,538	18.2%
Under \$10,000	1,878	11.3%	2,394	15.3%				
\$10,000-\$14,000			1,443	9.2%				
\$10,000-\$14,999	1,138	6.9%						
\$10,000-\$24,999					3,086	33.3%	3,041	35.9%
\$15,000-\$19,999	1,248	7.5%	1,455	9.3%				
\$20,000-\$24,999	1,061	6.4%	1,316	8.4%				
\$25,000-\$29,999	892	5.4%	1,372	8.8%				
\$25,000-\$34,999					1,749	18.8%	2,311	27.3%
\$30,000-\$34,999	818	4.9%	1,037	6.6%				
\$35,000 & Over			6,660	42.5%	3,167	34.2%	835	9.8%
\$35,000-\$39,999	1,023	6.2%						
\$40,000-\$44,999	962	5.8%						
\$45,000-\$49,999	790	4.8%						
\$50,000-\$59,999	1,502	9.1%						
\$60,000-\$74,999	1,723	10.4%						
\$75,000-\$99,999	1,676	10.1%						
\$100,000-\$124,999	782	4.7%						
\$125,000-\$149,999	560	3.4%						
\$150,000-\$199,999	275	1.7%						
\$200,000 & Over	240	1.4%						

SOURCE: U.S. Census of Population 1980-2010 Census Bureau, U.S. Department of Commerce

SOURCE: U.S. Census Bureau, 2009-2011 American Community Survey

**TABLE 2.46 - FAMILY INCOME PULASKI COUNTY
FOR 1979 - 2011**

	*2011		1999		1989		1979	
	#	%	#	%	#	%	#	%
Under \$5,000					499	20.2%	627	7.3%
\$5,000-\$9,999					594	24.1%	2,029	23.8%
Under \$10,000	1,019	6.4%	1,186	8.8%				
\$10,000-\$14,000			943	7.0%				
\$10,000-\$14,999	588	3.7%						
\$10,000-\$24,999					927	37.6%	4,638	54.4%
\$15,000-\$19,999	708	4.4%	889	6.6%				
\$20,000-\$24,999	966	6.1%	1,310	9.7%				
\$25,000-\$29,999	1,028	6.5%	1,466	10.9%				
\$25,000-\$34,999					230	9.3%	863	10.1%
\$30,000-\$34,999	643	4.0%	1,081	8.0%				
\$35,000 & Over			6,581	48.9%	216	8.8%	374	4.4%
\$35,000-\$39,999	1,131	7.1%						
\$40,000-\$44,999	1,193	7.5%						
\$45,000-\$49,999	724	4.5%						
\$50,000-\$59,999	1,421	8.9%						
\$60,000-\$74,999	2,125	13.3%						
\$75,000-\$99,999	2,457	15.4%						
\$100,000-\$124,999	1,092	6.9%						
\$125,000-\$149,999	498	3.1%						
\$150,000-\$199,999	235	1.5%						
\$200,000 & Over	99	0.6%						

SOURCE: U.S. Census of Population 1980-2010 Census Bureau, U.S. Department of Commerce

SOURCE: U.S. Census Bureau, 2009-2011 American Community Survey

**TABLE 2.47 - FAMILY INCOME WASHINGTON COUNTY
FOR 1979 - 2011**

	*2011		1999		1989		1979	
	#	%	#	%	#	%	#	%
Under \$5,000					516	9.4%	648	13.5%
\$5,000-\$9,999					778	14.2%	1,031	21.5%
Under \$10,000	868	9.3%	1,498	17.9%				
\$10,000-\$14,000			782	9.3%				
\$10,000-\$14,999	1,228	13.2%						
\$10,000-\$24,999					1,954	35.6%	1,943	40.5%
\$15,000-\$19,999	676	7.3%	990	11.8%				
\$20,000-\$24,999	776	8.3%	662	7.9%				
\$25,000-\$29,999	726	7.8%	625	7.5%				
\$25,000-\$34,999					914	16.7%	972	20.3%
\$30,000-\$34,999	577	6.2%	596	7.1%				
\$35,000 & Over			3,223	38.5%	1,324	24.1%	203	4.2%
\$35,000-\$39,999	688	7.4%						
\$40,000-\$44,999	419	4.5%						
\$45,000-\$49,999	625	6.7%						
\$50,000-\$59,999	512	5.5%						
\$60,000-\$74,999	709	7.6%						
\$75,000-\$99,999	835	9.0%						
\$100,000-\$124,999	501	5.4%						
\$125,000-\$149,999	18	0.2%						
\$150,000-\$199,999	106	1.1%						
\$200,000 & Over	48	0.5%						

SOURCE: U.S. Census of Population 1980-2010 Census Bureau, U.S. Department of Commerce
SOURCE: U.S. Census Bureau, 2009-2011 American Community Survey

**TABLE 2.48 - FAMILY INCOME MERAMEC REGION
FOR 1979 - 2011**

	*2011		1999		1989		1979	
	#	%	#	%	#	%	#	%
Under \$5,000					2262	6.3%	3848	9.5%
\$5,000-\$9,999					3802	10.5%	8,454	21.0%
Under \$10,000	6,247	8.6%	8,676	12.9%				
\$10,000-\$14,000			5,792	8.6%				
\$10,000-\$14,999	5,327	7.3%						
\$10,000-\$24,999					13,074	36.1%	16,797	41.7%
\$15,000-\$19,999	4,616	6.3%	5,942	8.9%				
\$20,000-\$24,999	5,277	7.3%	5,773	8.6%				
\$25,000-\$29,999	4,994	6.9%	5,810	8.7%				
\$25,000-\$34,999					6,700	18.5%	8,605	21.3%
\$30,000-\$34,999	4,335	6.0%	4,911	7.3%				
\$35,000 & Over			30,172	45.0%	10,356	28.6%	2,624	6.5%
\$35,000-\$39,999	4,724	6.5%						
\$40,000-\$44,999	4,458	6.1%						
\$45,000-\$49,999	3,916	5.4%						
\$50,000-\$59,999	6,541	9.0%						
\$60,000-\$74,999	7,805	10.7%						
\$75,000-\$99,999	7,849	10.8%						
\$100,000-\$124,999	3,486	4.8%						
\$125,000-\$149,999	1,631	2.2%						
\$150,000-\$199,999	938	1.3%						
\$200,000 & Over	610	0.8%						

SOURCE: U.S. Census of Population 1980-2010 Census Bureau, U.S. Department of Commerce

SOURCE: U.S. Census Bureau, 2009-2011 American Community Survey

**TABLE 2.49 - FAMILY INCOME MISSOURI
FOR 1979 - 2011**

	2011		1999		1989		1979	
	Population	%	Population	%	Population	%	Population	%
Under \$5,000					57295	4.2%	95165	7.2%
\$5,000-\$9,999					83953	6.1%	193,358	14.7%
Under \$10,000	190,559	8.1%	221,242	10.1%				
\$10,000-\$14,000			156,370	7.0%				
\$10,000-\$14,999	145,390	6.2%						
\$10,000-\$24,999					371,986	27.0%	419,085	31.8%
\$15,000-\$19,999	142,611	6.1%	156,062	7.1%				
\$20,000-\$24,999	144,260	6.1%	163,924	7.5%				
\$25,000-\$29,999	138,306	5.9%	159,663	7.3%				
\$25,000-\$34,999					248,655	18.0%	431,731	32.8%
\$30,000-\$34,999	136,677	5.8%	154,948	7.1%				
\$35,000 & Over			1,187,005	54.0%	616,131	44.7%	177,616	13.5%
\$35,000-\$39,999	128,420	5.5%						
\$40,000-\$44,999	125,779	5.3%						
\$45,000-\$49,999	105,088	4.5%						
\$50,000-\$59,999	203,486	8.6%						
\$60,000-\$74,999	240,770	10.2%						
\$75,000-\$99,999	272,992	11.6%						
\$100,000-\$124,999	156,827	6.7%						
\$125,000-\$149,999	87,508	3.7%						
\$150,000-\$199,999	74,133	3.1%						
\$200,000 & Over	62,456	2.7%						

SOURCE: U.S. Census of Population 1980-2010 Census Bureau, U.S. Department of Commerce

SOURCE: U.S. Census Bureau, 2009-2011 American Community Survey

**TABLE 2.50 - FAMILY INCOME UNITED STATES
FOR 1979 - 2011**

	2011		1999		1989		1979	
	#	%	#	%	#	%	#	%
Under \$5,000					2582206	4.0%	95165	7.2%
\$5,000-\$9,999					3636361	5.6%	193,358	14.7%
Under \$10,000	8,529,677	7.4%	10,067,027	9.5%				
\$10,000-\$14,000			6,657,228	6.3%				
\$10,000-\$14,999	6,472,374	5.6%						
\$10,000-\$24,999					15,334,437	23.6%	419,085	31.8%
\$15,000-\$19,999	6,326,462	5.5%	6,601,020	6.3%				
\$20,000-\$24,999	6,329,273	5.5%	6,935,945	6.6%				
\$25,000-\$29,999	6,084,213	5.3%	6,801,010	6.4%				
\$25,000-\$34,999					10,729,951	16.4%	431,731	32.8%
\$30,000-\$34,999	6,052,286	5.3%	6,718,232	5.9%				
\$35,000 & Over			61,758,660	58.5%	32,766,473	50.4%	177,616	13.5%
\$35,000-\$39,999	5,627,863	4.9%						
\$40,000-\$44,999	5,500,124	4.9%						
\$45,000-\$49,999	4,836,076	4.2%						
\$50,000-\$59,999	9,333,445	8.1%						
\$60,000-\$74,999	11,653,685	10.1%						
\$75,000-\$99,999	13,829,482	12.0%						
\$100,000-\$124,999	8,900,314	7.7%						
\$125,000-\$149,999	5,288,433	4.6%						
\$150,000-\$199,999	5,214,111	4.5%						
\$200,000 & Over	4,954,046	4.3%						

SOURCE: U.S. Census of Population 1980-2010 Census Bureau, U.S. Department of Commerce

SOURCE: U.S. Census Bureau, 2009-2011 American Community Survey

**TABLE 2.51 - MEDIAN FAMILY INCOME
CRAWFORD COUNTY**

	Median Family Income	Percent of U.S. Median	Persons In Poverty	Percent In Poverty
2010	\$44,270	70.3%	3,718	15.4%
1999	\$36,558	73.1%	3,668	16.3%
1989	\$23,208	65.9%	3,044	16.1%
1979	\$14,248	71.5%	3,101	17.1%

SOURCE: U.S. Census of Population 1980-2000 Census Bureau, U.S. Department of Commerce

SOURCE: U.S. Census Bureau, 2006-2010 American Community Survey

**TABLE 2.52 - MEDIAN FAMILY INCOME
DENT COUNTY**

	Median Family Income	Percent of U.S. Median	Persons In Poverty	Percent In Poverty
2010	\$44,092	70.0%	2,793	18.2%
1999	\$33,061	66.1%	2,527	17.2%
1989	\$21,039	59.7%	3,389	25.2%
1979	\$12,551	63.0%	2,899	20.1%

SOURCE: U.S. Census of Population 1980-2000 Census Bureau, U.S. Department of Commerce

SOURCE: U.S. Census Bureau, 2006-2010 American Community Survey

**TABLE 2.53 - MEDIAN FAMILY INCOME
GASCONADE COUNTY**

	Median Family Income	Percent of U.S. Median	Persons In Poverty	Percent In Poverty
2010	\$50,022	79.4%	1,624	10.8%
1999	\$41,518	83.0%	1,427	9.5%
1989	\$27,228	77.3%	1,474	10.8%
1979	\$15,658	78.6%	1,589	12.3%

SOURCE: U.S. Census of Population 1980-2000 Census Bureau, U.S. Department of Commerce

SOURCE: U.S. Census Bureau, 2006-2010 American Community Survey

**TABLE 2.54 - MEDIAN FAMILY INCOME
MARIES COUNTY**

	Median Family Income	Percent of U.S. Median	Persons In Poverty	Percent In Poverty
2010	\$48,504	77.0%	1,259	13.9%
1999	\$39,187	78.3%	1,153	13.1%
1989	\$22,199	63.0%	1,297	16.5%
1979	\$13,909	69.8%	1,190	15.8%

SOURCE: U.S. Census of Population 1980-2000 Census Bureau, U.S. Department of Commerce

SOURCE: U.S. Census Bureau, 2006-2010 American Community Survey

**TABLE 2.55 - MEDIAN FAMILY INCOME
OSAGE COUNTY**

	Median Family Income	Percent of U.S. Median	Persons In Poverty	Percent In Poverty
2010	\$55,813	88.6%	1,490	10.9%
1999	\$46,503	92.9%	1,068	8.3%
1989	\$30,846	88.0%	1,153	9.7%
1979	\$17,110	86.0%	1,506	12.6%

SOURCE: U.S. Census of Population 1980-2000 Census Bureau, U.S. Department of Commerce

SOURCE: U.S. Census Bureau, 2006-2010 American Community Survey

**TABLE 2.56 - MEDIAN FAMILY INCOME
PHELPS COUNTY**

	Median Family Income	Percent of U.S. Median	Persons In Poverty	Percent In Poverty
2010	\$52,229	82.9%	7,281	17.9%
1999	\$28,693	77.3%	6,129	16.4%
1989	\$26,428	75.0%	6,046	18.5%
1979	\$16,310	81.9%	4,848	15.9%

SOURCE: U.S. Census of Population 1980-2000 Census Bureau, U.S. Department of Commerce

SOURCE: U.S. Census Bureau, 2006-2010 American Community Survey

**TABLE 2.57 - MEDIAN FAMILY INCOME
PULASKI COUNTY**

	Median Family Income	Percent of U.S. Median	Persons In Poverty	Percent In Poverty
2010	\$53,304	84.6%	5,684	14.3%
1999	\$37,786	75.5%	3,702	10.3%
1989	\$23,312	66.2%	5,222	14.8%
1979	\$13,533	67.9%	4,620	15.2%

SOURCE: U.S. Census of Population 1980-2000 Census Bureau, U.S. Department of Commerce

SOURCE: U.S. Census Bureau, 2006-2010 American Community Survey

**TABLE 2.58 - MEDIAN FAMILY INCOME
WASHINGTON COUNTY**

	Median Family Income	Percent of U.S. Median	Persons In Poverty	Percent In Poverty
2010	\$42,120	66.9%	4,886	20.7%
1999	\$31,634	63.2%	4,586	20.8%
1989	\$20,406	57.9%	5,362	27.2%
1979	\$13,465	67.6%	3,713	20.8%

SOURCE: U.S. Census of Population 1980-2000 Census Bureau, U.S. Department of Commerce

SOURCE: U.S. Census Bureau, 2006-2010 American Community Survey

**TABLE 2.59 - MEDIAN FAMILY INCOME
MERAMEC REGION**

	Median Family Income	Percent of U.S. Median	Persons In Poverty	Percent In Poverty
2010	\$48,794	77.5%	28,735	15.8%
1999	\$38,118	76.2%	24,260	14.0%
1989	\$24,333	69.1%	26,987	17.4%
1979	\$14,598	73.3%	23,466	16.2%

SOURCE: U.S. Census of Population 1980-2000 Census Bureau, U.S. Department of Commerce

SOURCE: U.S. Census Bureau, 2006-2010 American Community Survey

**TABLE 2.60 - MEDIAN FAMILY INCOME
MISSOURI**

	Median Family Income	Percent of U.S. Median	Persons In Poverty	Percent In Poverty
2010	\$57,661	91.6%	802,596	14.0%
1999	\$46,044	92.0%	637,891	11.7%
1989	\$31,838	90.4%	663,075	13.3%
1979	\$18,784	94.3%	582,252	12.2%

SOURCE: U.S. Census of Population 1980-2000 Census Bureau, U.S. Department of Commerce

SOURCE: U.S. Census Bureau, 2006-2010 American Community Survey

**TABLE 2.61 - MEDIAN FAMILY INCOME
UNITED STATES**

	Median Family Income	Percent of U.S. Median	Persons In Poverty	Percent In Poverty
2010	\$62,982	100.0%	40,917,513	13.8%
1999	\$50,046	100.0%	33,899,812	12.4%
1989	\$35,225	100.0%	31,742,864	13.1%
1979	\$19,917	100.0%	27,392,000	12.4%

SOURCE: U.S. Census of Population 1980-2000 Census Bureau, U.S. Department of Commerce

SOURCE: U.S. Census Bureau, 2006-2010 American Community Survey

TABLE 2.62 - DETAILED EDUCATION LEVELS: CRAWFORD COUNTY

	Persons 25 yrs & Older	Elementary (0 - 8 grade)	%	Some H. S. no Diploma	%	H. S. Diploma or Equivalent	%	College, no Degree	%	Assoc. Degree	%	Bachelor's Degree	%	Graduate or Professional Degree	%	% w/ at least H.S. Diploma	% w/ at least an Assoc. Degree	% w/ at least a Four Year College Degree
2010	16,595	1,380	8.3	2,328	14.0	6,842	41.2	3,419	20.6	829	5.0	1,248	7.5	549	3.3	77.6	15.8	10.8
2000	15,057	1,958	13.0	2,648	17.6	5,897	39.2	2,641	17.5	644	4.3	815	5.4	454	3.0	69.4	12.7	8.4
1990	12,559	2,651	21.2	2,544	20.1	4,659	37.1	1,450	11.5	362	2.9	573	4.6	320	2.5	58.6	10.0	7.1

Source: 1990 and 2000 Census, U.S. Census Bureau

Source: 2006-2010 American Community Survey 5 year Estimates

TABLE 2.63 - DETAILED EDUCATION LEVELS: DENT COUNTY

	Persons 25 yrs & Older	Elementary (0 - 8 grade)	%	Some H. S. no Diploma	%	H. S. Diploma or Equivalent	%	College, no Degree	%	Assoc. Degree	%	Bachelor's Degree	%	Graduate or Professional Degree	%	% w/ at least H.S. Diploma	% w/ at least an Assoc. Degree	% w/ at least a Four Year College Degree
2010	10,703	1,138	10.6	1,434	13.4	4,097	38.3	2,161	20.2	672	6.3	815	7.6	386	3.6	76.0	17.5	11.2
2000	10,098	1,626	16.1	1,775	17.9	3,621	35.9	1,749	17.3	304	3.0	710	7.0	313	3.1	66.3	13.1	10.1
1990	9,070	2,250	24.8	1,935	21.3	2,931	32.3	1,114	12.3	128	1.4	493	5.4	219	2.4	53.9	9.2	7.9

Source: 1990 and 2000 Census, U.S. Census Bureau

Source: 2006-2010 American Community Survey 5 year Estimates

TABLE 2.64 - DETAILED EDUCATION LEVELS: GASCONADE COUNTY

	Persons 25 yrs & Older	Elementary (0 - 8 grade)	%	Some H. S. no Diploma	%	H. S. Diploma or Equivalent	%	College, no Degree	%	Assoc. Degree	%	Bachelor's Degree	%	Graduate or Professional Degree	%	% w/ at least H.S. Diploma	% w/ at least an Assoc. Degree	% w/ at least a Four Year College Degree
2010	10,819	881	8.1	1,081	10.0	4,390	40.6	2,137	19.8	801	7.4	977	9.0	552	5.1	81.9	21.5	14.1
2000	10,530	1,384	13.1	1,359	12.9	4,228	40.2	1,923	18.3	540	5.1	734	7.0	362	3.4	73.9	15.5	10.4
1990	9,518	2,296	24.1	1,402	14.7	3,464	36.4	1,192	12.5	402	4.2	530	5.6	232	2.4	61.1	12.2	8.0

Source: 1990 and 2000 Census, U.S. Census Bureau

Source: 2006-2010 American Community Survey 5 year Estimates

TABLE 2.65 - DETAILED EDUCATION LEVELS: MARIES COUNTY

	Persons 25 yrs & Older	Elementary (0 - 8 grade)	%	Some H. S. no Diploma	%	H. S. Diploma or Equivalent	%	College, no Degree	%	Assoc. Degree	%	Bachelor's Degree	%	Graduate or Professional Degree	%	% w/ at least H.S. Diploma	% w/ at least an Assoc. Degree	% w/ at least a Four Year College Degree
2010	6,205	447	7.2	821	13.2	2,676	43.1	1,011	16.3	367	5.9	555	8.9	328	5.3	79.5	20.1	14.2
2000	5,969	818	13.7	703	11.8	2,518	42.2	984	16.5	290	4.9	482	8.1	174	3.0	74.5	16.0	11.0
1990	5,237	1,181	22.6	850	16.2	1,945	37.1	643	12.3	182	3.5	334	6.4	102	1.9	61.2	11.8	8.3

Source: 1990 and 2000 Census, U.S. Census Bureau

Source: 2006-2010 American Community Survey 5 year Estimates

TABLE 2.66 - DETAILED EDUCATION LEVELS: OSAGE COUNTY

	Persons 25 yrs & Older	Elementary (0 - 8 grade)	%	Some H. S. no Diploma	%	H. S. Diploma or Equivalent	%	College, no Degree	%	Assoc. Degree	%	Bachelor's Degree	%	Graduate or Professional Degree	%	% w/ at least H.S. Diploma	% w/ at least an Assoc. Degree	% w/ at least a Four Year College Degree
2010	9,025	680	7.5	582	6.5	4,225	46.8	1,396	15.5	948	10.5	839	9.3	355	3.9	86.0	23.7	13.2
2000	8,375	1,273	15.2	808	9.7	3,690	44.1	1,238	14.8	498	5.9	587	7.0	281	3.4	75.2	16.3	10.4
1990	7,377	1,741	23.6	840	11.4	3,176	43.0	698	9.5	396	5.4	377	5.1	149	2.0	65.0	12.5	7.1

Source: 1990 and 2000 Census, U.S. Census Bureau

Source: 2006-2010 American Community Survey 5 year Estimates

TABLE 2.67 - DETAILED EDUCATION LEVELS: PHELPS COUNTY

	Persons 25 yrs & Older	Elementary (0 - 8 grade)	%	Some H. S. no Diploma	%	H. S. Diploma or Equivalent	%	College, no Degree	%	Assoc. Degree	%	Bachelor's Degree	%	Graduate or Professional Degree	%	% w/ at least H.S. Diploma	% w/ at least an Assoc. Degree	% w/ at least a Four Year College Degree
2010	26,750	1,543	5.8	2,232	8.3	8,915	33.3	5,690	21.3	1,615	6.0	3,950	14.8	2,805	10.5	85.9	31.3	25.3
2000	24,665	1,955	7.9	3,216	13.0	8,123	32.9	5,045	20.5	1,134	4.6	2,934	12.0	2,258	9.1	79.1	25.7	21.1
1990	21,343	3,305	15.5	3,067	14.4	7,021	32.9	3,297	15.4	747	3.5	2,284	10.7	1,622	7.6	70.1	21.8	18.3

Source: 1990 and 2000 Census, U.S. Census Bureau

Source: 2006-2010 American Community Survey 5 year Estimates

TABLE 2.68 - DETAILED EDUCATION LEVELS: PULASKI COUNTY

	Persons 25 yrs & Older	Elementary (0 - 8 grade)	%	Some H. S. no Diploma	%	H. S. Diploma or Equivalent	%	College, no Degree	%	Assoc. Degree	%	Bachelor's Degree	%	Graduate or Professional Degree	%	% w/ at least H.S. Diploma	% w/ at least an Assoc. Degree	% w/ at least a Four Year College Degree
2010	26,113	1,111	4.3	1,987	7.6	8,888	34.0	6,701	25.7	2,621	10.0	3,001	11.5	1,804	6.9	88.1	28.4	18.4
2000	23,062	1,153	5.0	2,282	9.9	7,753	33.6	5,532	24.0	2,011	8.7	2,961	12.8	1,370	5.9	85.1	27.4	18.8
1990	22,343	2,100	9.4	2,695	12.1	8,283	37.1	13,078	58.5	6,413	28.7	1,927	8.6	925	4.1	78.6	41.4	12.8

Source: 1990 and 2000 Census, U.S. Census Bureau

Source: 2006-2010 American Community Survey 5 year Estimates

TABLE 2.69 - DETAILED EDUCATION LEVELS: WASHINGTON COUNTY

	Persons 25 yrs & Older	Elementary (0 - 8 grade)	%	Some H. S. no Diploma	%	H. S. Diploma or Equivalent	%	College, no Degree	%	Assoc. Degree	%	Bachelor's Degree	%	Graduate or Professional Degree	%	% w/ at least H.S. Diploma	% w/ at least an Assoc. Degree	% w/ at least a Four Year College Degree
2010	16,802	2,200	13.1	2,788	16.6	7,004	41.7	2,808	16.7	707	4.2	749	4.5	546	3.2	70.3	11.9	7.7
2000	14,796	2,428	16.4	3,120	21.1	5,233	35.4	2,401	16.2	503	3.4	759	5.1	352	2.4	62.5	10.9	7.5
1990	12,397	3,442	27.8	2,661	21.5	3,883	31.3	1,389	11.2	312	3.5	492	4.0	218	1.8	50.7	9.3	5.8

Source: 1990 and 2000 Census, U.S. Census Bureau

Source: 2006-2010 American Community Survey 5 year Estimates

TABLE 2.70 - DETAILED EDUCATION LEVELS: MERAMEC REGION

	Persons 25 yrs & Older	Elementary (0 - 8 grade)	%	Some H. S. no Diploma	%	H. S. Diploma or Equivalent	%	College, no Degree	%	Assoc. Degree	%	Bachelor's Degree	%	Graduate or Professional Degree	%	% w/ at least H.S. Diploma	% w/ at least an Assoc. Degree	% w/ at least a Four Year College Degree
2010	123,012	9,380	7.6	13,253	10.8	47,037	38.2	25,323	20.6	8,560	6.9	12,134	9.9	7,325	6.0	81.6	22.8	15.9
2000	112,552	12,595	11.2	15,911	14.1	41,063	36.5	21,513	19.1	5,924	5.3	9,982	8.9	5,564	4.9	74.7	19.1	13.8
1990	99,844	18,966	19.0	15,994	16.0	35,362	35.4	22,861	22.9	8,948	9.0	7,010	7.0	3,787	3.8	65	19.8	10.8

Source: 1990 and 2000 Census, U.S. Census Bureau

Source: 2006-2010 American Community Survey 5 year Estimates

TABLE 2.71 - DETAILED EDUCATION LEVELS: MISSOURI

	Persons 25 yrs & Older	Elementary (0 - 8 grade)	%	Some H. S. no Diploma	%	H. S. Diploma or Equivalent	%	College, no Degree	%	Assoc. Degree	%	Bachelor's Degree	%	Graduate or Professional Degree	%	% w/ at least H.S. Diploma	% w/ at least an Assoc. Degree	% w/ at least a Four Year College Degree
2010	3,906,865	182,145	4.7	358,523	9.2	1,272,495	32.6	859,097	22.0	255,955	6.6	618,502	15.8	360,148	9.2	86.2	31.6	25.0
2000	3,634,906	237,618	6.5	441,477	12.2	1,189,670	32.7	796,999	20.6	184,666	5.1	507,892	14.0	276,584	7.6	81.3	26.7	21.6
1990	3,291,579	380,613	11.6	477,755	14.5	1,090,940	33.1	607,163	18.4	149,347	4.5	383,678	11.7	202,083	6.1	73.9	22.3	17.8

Source: 1990 and 2000 Census, U.S. Census Bureau

Source: 2006-2010 American Community Survey 5 year Estimates

TABLE 2.72 - DETAILED EDUCATION LEVELS: UNITED STATES

	Persons 25 yrs & Older	Elementary (0 - 8 grade)	%	Some H. S. no Diploma	%	H. S. Diploma or Equivalent	%	College, no Degree	%	Assoc. Degree	%	Bachelor's Degree	%	Graduate or Professional Degree	%	% w/ at least H.S. Diploma	% w/ at least an Assoc. Degree	% w/ at least a Four Year College Degree
2010	199,726,659	12,435,227	6.2	17,463,256	8.7	57,903,353	29.0	41,175,904	20.6	15,021,920	7.5	35,148,428	17.6	20,578,571	10.3	85.0	35.4	27.9
2000	182,211,639	13,755,477	7.5	21,960,148	12.1	52,168,981	28.6	38,351,595	21.1	11,512,823	6.3	28,317,792	15.5	16,144,813	8.9	80.4	30.7	24.4
1990	158,868,436	16,502,211	10.4	22,841,507	14.4	47,642,763	30.0	29,779,777	18.7	9,791,925	6.2	20,832,567	13.1	11,477,686	7.2	75.2	26.5	20.3

Source: 1990 and 2000 Census, U.S. Census Bureau

Source: 2006-2010 American Community Survey 5 year Estimates