

Appendix F

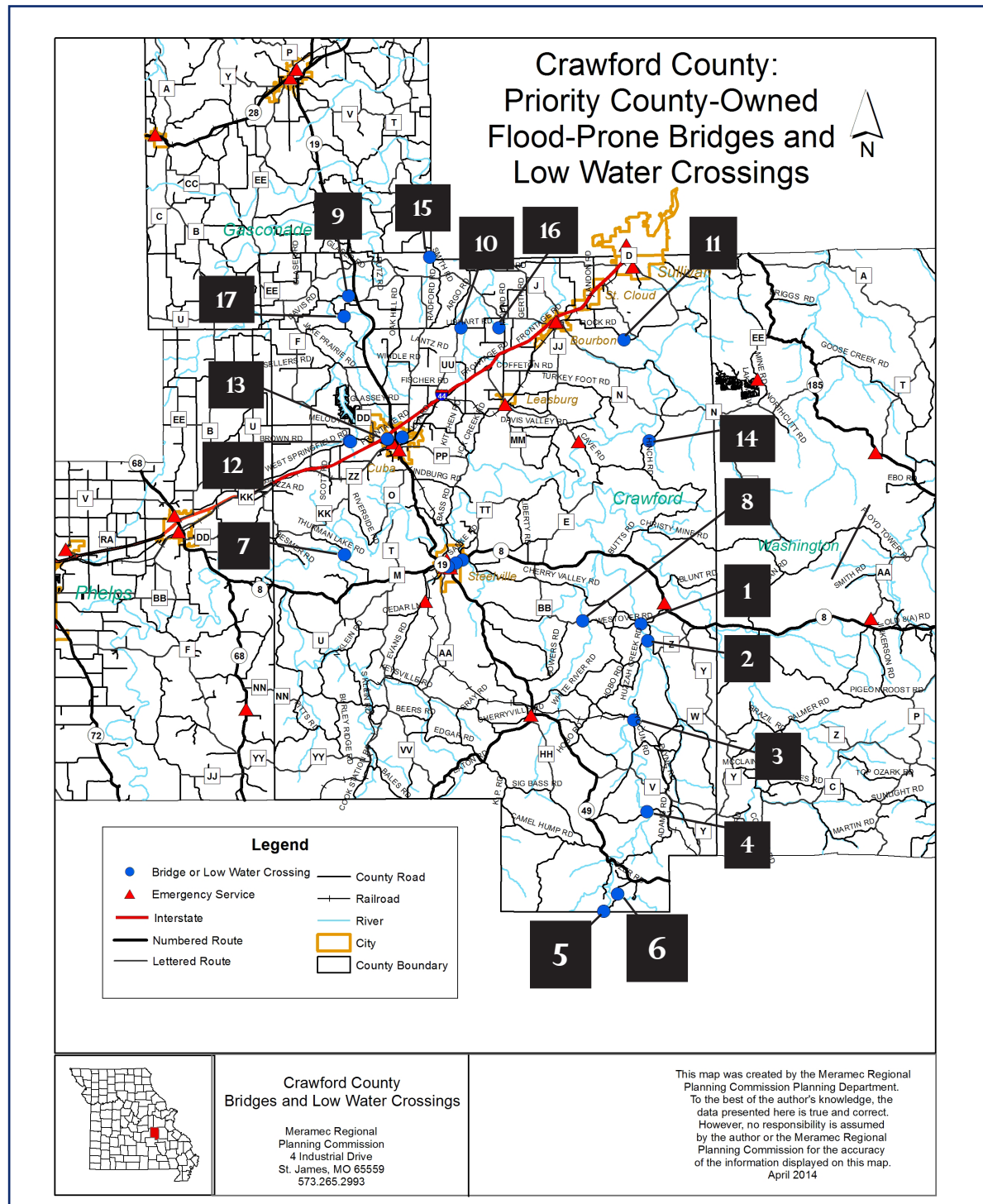
Meramec Region

Priority Low-Water Crossing/Bridge Assessments

April 2014

—CRAWFORD COUNTY—

PRIORITY COUNTY-OWNED FLOOD-PRONE BRIDGES AND LOW WATER CROSSINGS



Bridge 1—
On Westover Road
Crosses Huzzah Creek

Bridge 2—
On Huzzah Creek Road
Crosses Huzzah Creek

Bridge 3—
On John Coleman Road
Crosses Huzzah Creek

Bridge 4—
On Sellers Road
Crosses Huzzah Creek

Bridge 5—
On Willhite Road
Crosses Huzzah Creek

Bridge 6—
On Willhite Road
Crosses Crooked Creek

Bridge 7—
On Thurman Lake Road
Crosses Meramec River

Bridge 8—
On Westover Road
Crosses Dry Creek

Bridge 9—
On High Point Road
Crosses Brush Creek

Bridge 10—
On Libhardt Road
Crosses Little Bourbouse

Bridge 11—
On Rock Road
Crosses Carter Creek

Bridge 12—
On Springfield Road
Crosses Indian Hills tributary

Bridge 13—
On Springfield Road
Crosses Indian Hills tributary

Bridge 14—
On Hinch Road
Crosses Hinch Creek

Bridge 15—
On Smith Road
Crosses Three Mile Creek

Bridge 16—
On Ware Road
Crosses Little Bourbouse tributary

Bridge 17—
On 4 Mile Road
Crosses Brush Creek tributary

BRIDGE NO.	YEAR BUILT	STRUCTURE TYPE *	TRIBUTARY OR STREAM	LATITUDE	LONGITUDE	ELEVATION (FT)	DATE OF TRAFFIC COUNT	AVERAGE DAILY TRAFFIC	DETOUR TIME (MINUTES)
1	1975	LW-1 Opening	Huzzah Creek	N37.9199667	W091.1689000	696	12/26/13	51	5
2	1980	LW-2 Openings	Huzzah Creek	N37.9067833	W091.1628000	704	12/26/13	56	6
3	1990	LW-1 Opening	Huzzah Creek	N37.84599	W091.17787		11/19/13	73	2
4	1995	LW-1 Opening	Huzzah Creek	N37.77503	W091.16685		11/11/13	37	1
5	1989	LW-Pipe	Huzzah Creek	N37.69888	W091.21053		11/11/13	27	38
6	1980	LW-Pipe	Crooked Creek	N37.71181	W091.19682		11/19/13	36	34
7	1975	LW-Openings	Meramec River	N37.9776333	W091.4566167	750	11/27/13	41	26
8	1987	LW-Pipe	Dry Creek	N37.92331	W091.22568	695	11/27/13	109	11
9	1963	LW-1 Opening	Brush Creek	N38.1773333	W091.4482500	764	01/04/14	90	8
10	1960	LW-Openings	Little Bourbouse	N38.1510833	W091.3390167	816	01/29/14	87	4
11	1947	Slab w/Pipe	Carter Creek	N38.1394833	W091.1801167	730	02/07/14	98	5
12	1955	Slab w/Pipe	Indian Hills trib.	N38.0653500	W091.4500167	895	02/07/14	42	4
13	1955	Slab w/Pipe	Indian Hills trib.	N38.0646667	W091.4490833	913	02/19/14	177	3
14	1950	Concrete Slab	Hinch Creek	N38.0610833	W091.1573667	670	02/19/14	62	16
15	1970	I Beam/Wood Deck	Three Mile Creek	N38.2060667	W091.3683500	747	02/28/14	25	8
16	1975	Slab w/Pipe	Little Bourbouse trib.	N38.1506167	W091.3021833	879	02/28/14	55	Cut Off
17	1949	Slab w/Pipe	Brush creek trib.	N38.1614000	W091.4530000	729	01/29/14	26	16

* LW= Low Water Crossing

Data Source: MRPC analysis 2012-2014



CRAWFORD COUNTY BRIDGE PHOTOS

BRIDGE 1
Westover Road



Jan. 24, 2014

BRIDGE 2
Huzzah Creek Road



Jan. 24, 2013

BRIDGE 3
John Coleman Road



Nov. 19, 2013

BRIDGE 4
Sellers Road



Nov. 19, 2013

BRIDGE 5
Wilhite Road



Nov. 19, 2013

BRIDGE 6
Wilhite Road



Nov. 19, 2013

BRIDGE 7
Thurman Lake Road



Nov. 25, 2013

BRIDGE 8
Westover Road



Nov. 25, 2013

BRIDGE 9
High Point Road



Feb. 13, 2014

BRIDGE 10
Libhardt Road

Photo Not Available

BRIDGE 11
Rock Road



March 3, 2014

BRIDGE 12
Springfield Road



March 3, 2014

BRIDGE 13
Springfield Road



March 3, 2014

BRIDGE 14
Hinch Road



March 3, 2014

BRIDGE 15
Smith Road



March 3, 2014

BRIDGE 16
Ware Road



March 3, 2014

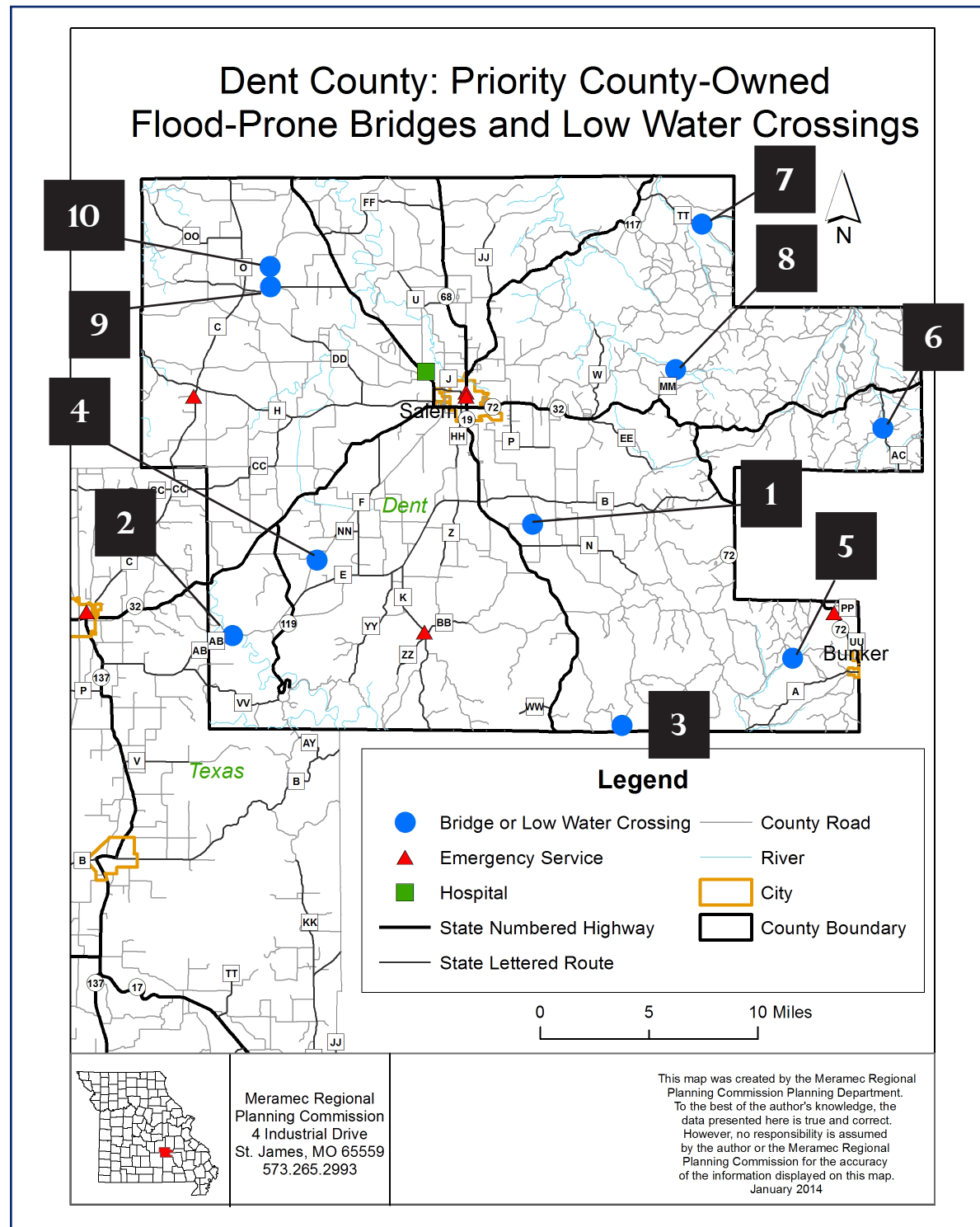
BRIDGE 17
4 Mile Road



March 3, 2014

—DENT COUNTY—

PRIORITY COUNTY-OWNED FLOOD-PRONE BRIDGES AND LOW WATER CROSSINGS



Bridge 1—
On County Road 5460
Crosses a tributary to Dry Valley Creek

Bridge 2—
On County Road 6580
Crosses Pigeon Creek

Bridge 3—
On County Road 5530
Crosses Gray Branch

Bridge 4—
On County Road 6470
Crosses Humes Creek

Bridge 5—
On County Road 5610
Crosses Gordon Creek

Bridge 6—
On County Road 5300
Crosses Huzzah Creek

Bridge 7—
On County Road 4030
Crosses Mid Prong Crooked Creek

Bridge 8—
On County Road 4290
Crosses Hutchins Creek

Bridge 9—
On County Road 2070
Crosses Hyer Branch

Bridge 10—
On County Road 2070
Crosses Hyer Branch

BRIDGE NO.	YEAR BUILT	STRUCTURE TYPE	TRIBUTARY/STREAM	FLOODING FREQUENCY	REPAIR & MAINTENANCE	LATITUDE	LONGITUDE	ELEVATION (FT)	TRAFFIC COUNT DATE	AVERAGE DAILY TRAFFIC	DETOUR TIME (MINUTES)
1	Unk.	Slab	Dry Valley Creek	4	\$1,000	N37.5575167	W091.4821500	1232	12/3/12	34	2-4
2	Unk.	Slab w/CMP	Pigeon Creek	4	\$2,500	N37.4863500	W091.7345167	Unk.	12/20/12	204	6-9
3	Unk.	Slab	Gray Branch	4	\$1,000	N37.4225167	W091.4100167	904	12/12/12	14	6
4	Unk.	Gravel Crossing	Humes Creek	4	\$1,000	N37.5357500	W091.6631000	1228	12/20/12	78	3-6
5	Unk.	Slab w/ Barrels	Gordon Creek	4	\$1,000	N37.4651667	W091.2666667	1041	12/20/12	81	17
6	Unk.	Slab	Huzzah Creek	4	\$1,000	N37.6174000	W091.1874333	1039	12/3/12	171	8
7	Unk.	Slab	Crooked Creek	4	\$1,500	N37.7554167	W091.3358667	1032	11/22/12	75	16-17
8	Unk.	Slab	Hutchins Creek	4	\$1,500	N37.6588833	W091.3602333	1028	11/22/12	85	10
9	Unk.	Slab	Hyer Branch	4	\$1,000	N37.7184500	W091.6987900	1041	10/17/12	33	15
10	Unk.	Slab	Hyer Branch	4	\$1,000	N37.7317167	W091.6988333	1108	10/17/12	25	9

Data Source: MRPC analysis 2012-2014



DENT COUNTY BRIDGE PHOTOS

BRIDGE 1
CR 5460



Dec. 7, 2012

BRIDGE 2
CR 6580



Dec. 27, 2012

BRIDGE 3
CR 5530



Dec. 7, 2012

BRIDGE 4
CR 6470



Dec. 27, 2012

BRIDGE 5
CR 5610



Dec. 7, 2012

BRIDGE 6
CR 5300



Dec. 7, 2012

BRIDGE 7
CR 4030



Nov. 16, 2012

BRIDGE 8
CR 4290



Nov. 16, 2012

BRIDGE 9
CR 2070



Oct. 10, 2012

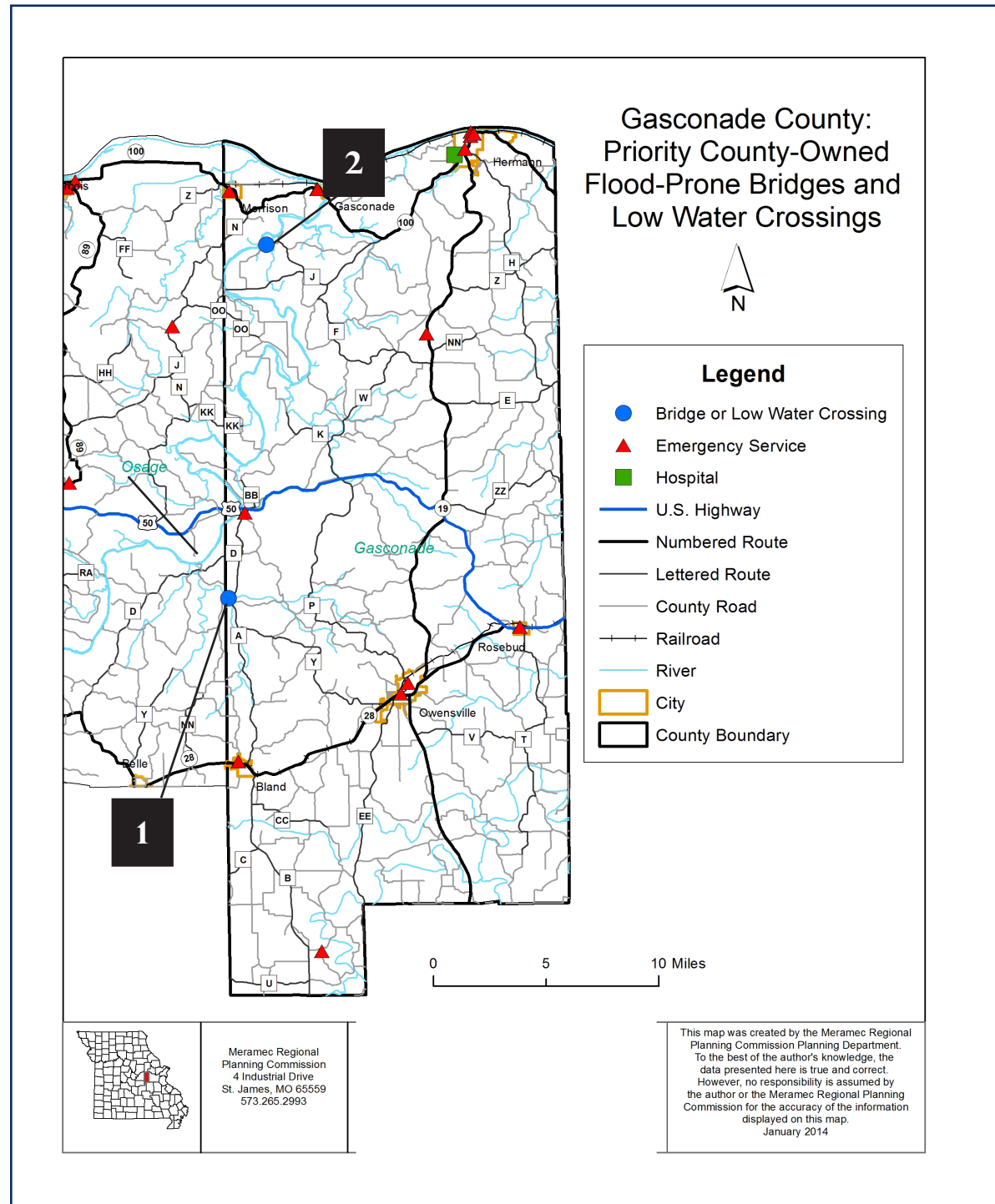
BRIDGE 10
CR 2070



Oct. 10, 2012

— GASCONADE COUNTY —

PRIORITY COUNTY-OWNED FLOOD-PRONE BRIDGES AND LOW WATER CROSSINGS



Bridge 1 —
On County Road 404/Valentine Ford
Crosses Third Creek



Photo taken Apr. 24, 2012

Bridge 2 —
On County Road 6580
Crosses Pigeon Creek



Photo taken May 23, 2012

BRIDGE NO.	YEAR BUILT	STRUCTURE TYPE	TRIBUTARY/STREAM	FLOODING FREQUENCY	REPAIR & MAINTENANCE	LATITUDE	LONGITUDE	ELEVATION (FT.)	TRAFFIC COUNT DATE	AVERAGE DAILY TRAFFIC	DETOUR TIME (MINUTES)
1	1943	Low Water	Third Creek	6	\$1,000	N38.4093667	W091.6414333	586	NA	NA	10
2	Unk	Box Culvert	Sugar Creek	6	\$2,500	N38.6364667	W091.6058500	499	8/23/12	55	10

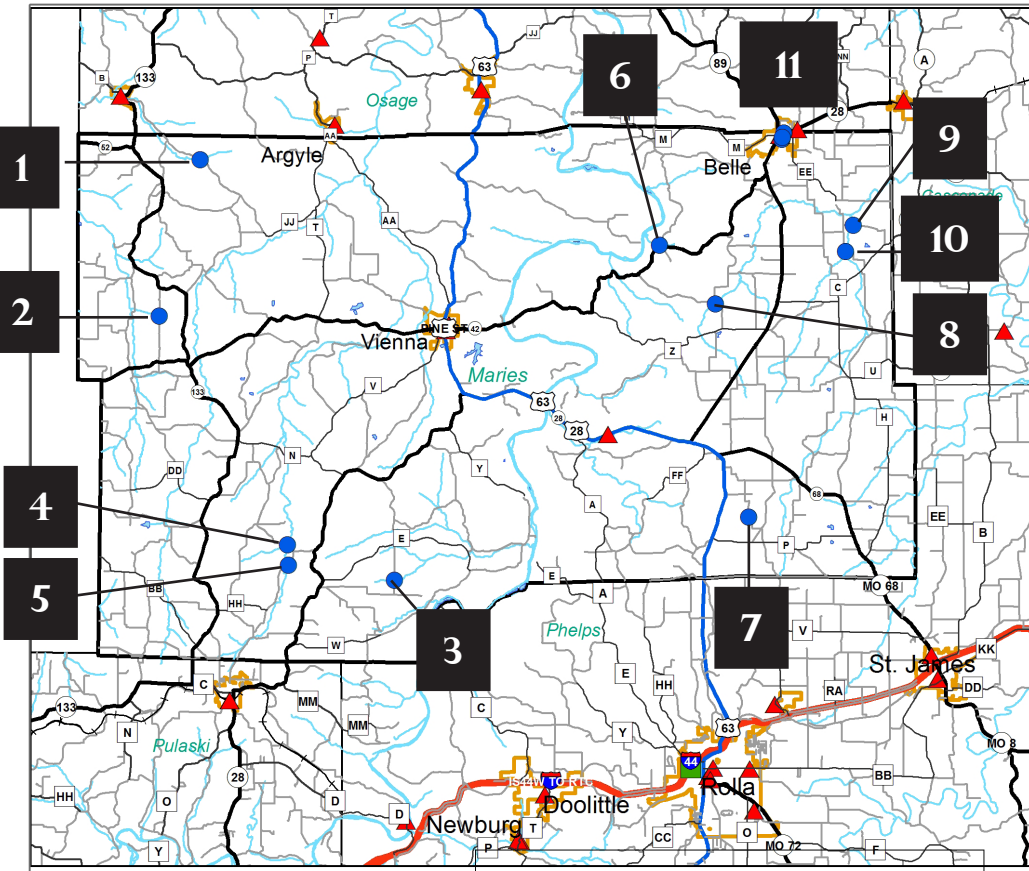
Data Source: MRPC analysis 2012-2014



—MARIES COUNTY—

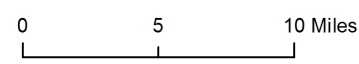
PRIORITY COUNTY-OWNED FLOOD-PRONE BRIDGES AND LOW WATER CROSSINGS

Maries County: Priority County-Owned Flood-Prone Bridges and Low Water Crossings



Legend

- phelps_lettered_route
- State Lettered Route
- Bridge or Low Water Crossing
- County Road
- Emergency Service
- River
- Medical Facility
- Lake
- Interstate
- City
- U. S. Highway
- County Boundary
- State Numbered Route



Meramec Regional Planning Commission
4 Industrial Drive
St. James, MO 65559
573.265.2993

This map was created by the Meramec Regional Planning Commission Planning Department. To the best of the author's knowledge, the data presented here is true and correct. However, no responsibility is assumed by the author or the Meramec Regional Planning Commission for the accuracy of the information displayed on this map. January 2014

Bridge 1—
On Maries Road 205
Crosses Sugar Creek

Bridge 2—
On Maries Road 219

Bridge 3—
On Maries Road 505
Crosses Montague Creek

Bridge 4—
On Maries Road 621
Crosses Maries River

Bridge 5—
On Maries Road 621
Crosses a tributary to the Maries River

Bridge 6—
On Maries Road 311
Crosses Mill Spring

Bridge 7—
On Maries Road 442

Bridge 8—
On Maries Road 317
Crosses Dry Fork

Bridge 9—
On Maries Road 408
Crosses Lower Peavine

Bridge 10—
On Maries Road 409
Crosses Lower Peavine

Bridge 11—
On Fifth Street in Belle
Crosses an unnamed creek

BRIDGE NO.	YEAR BUILT	STRUCTURE TYPE	TRIBUTARY/STREAM	FLOODING FREQUENCY	REPAIR & MAINTENANCE	LATITUDE	LONGITUDE	ELEVATION (FT)	TRAFFIC COUNT DATE	AVERAGE DAILY TRAFFIC	DETOUR TIME (MINUTES)
1	Unk.	Low Water Slab	Sugar Creek			N38.2774833	W092.1142667	674	09/18/13	14	2-4
2	Unk.	Low Water Slab				N38.2046833	W092.1412000	767	09/18/13	23	6-9
3	Unk.	Low Water Slab	Montague Creek			N38.0535667	W091.9844667	811	10/14/13	79	6
4	Unk.	Low Water Slab	Maries River			N38.06212	W092.05604		10/24/13	57	3-6
5	Unk.	Low Water Slab	Maries River trib.			N38.060060	W092.056080		10/24/13	57	17
6	Unk.	Low Water Slab	Mill Spring			N38.2295833	W091.8022833	582	09/26/13	26	8
7	Unk.	Low Water Slab				N38.0847667	W091.7443500	987	10/14/13	15	16-17
8	Unk.	Low Water Slab	Dry Fork			N38.1981167	W091.7649833	974	09/26/13	95	10
9	Unk.	Low Water Slab	Lower Peavine			N38.2386167	W091.6706500	744	10/04/13	34	15
10	Unk.	Low Water Slab	Lower Peavine			N38.2248833	W091.6762333	817	10/04/13	69	9

Data Source: MRPC analysis 2012-2014



MARIES COUNTY BRIDGE PHOTOS

BRIDGE 1
Maries Road 205



Oct. 3, 2013

BRIDGE 2
Maries Road 219



Oct. 3, 2013

BRIDGE 3
Maries Road 505



Oct. 9, 2013

BRIDGE 4
Maries Road 621



Oct. 18, 2013

BRIDGE 5
Maries Road 621

Photo Not Available

Oct. 18, 2013

BRIDGE 6
Maries Road 311



Oct. 3, 2013

BRIDGE 7
Maries Road 442



Oct. 9, 2013

BRIDGE 8
Maries Road 317



Oct. 3, 2013

BRIDGE 9
Maries Road 408



Oct. 9, 2013

BRIDGE 10
Maries Road 409



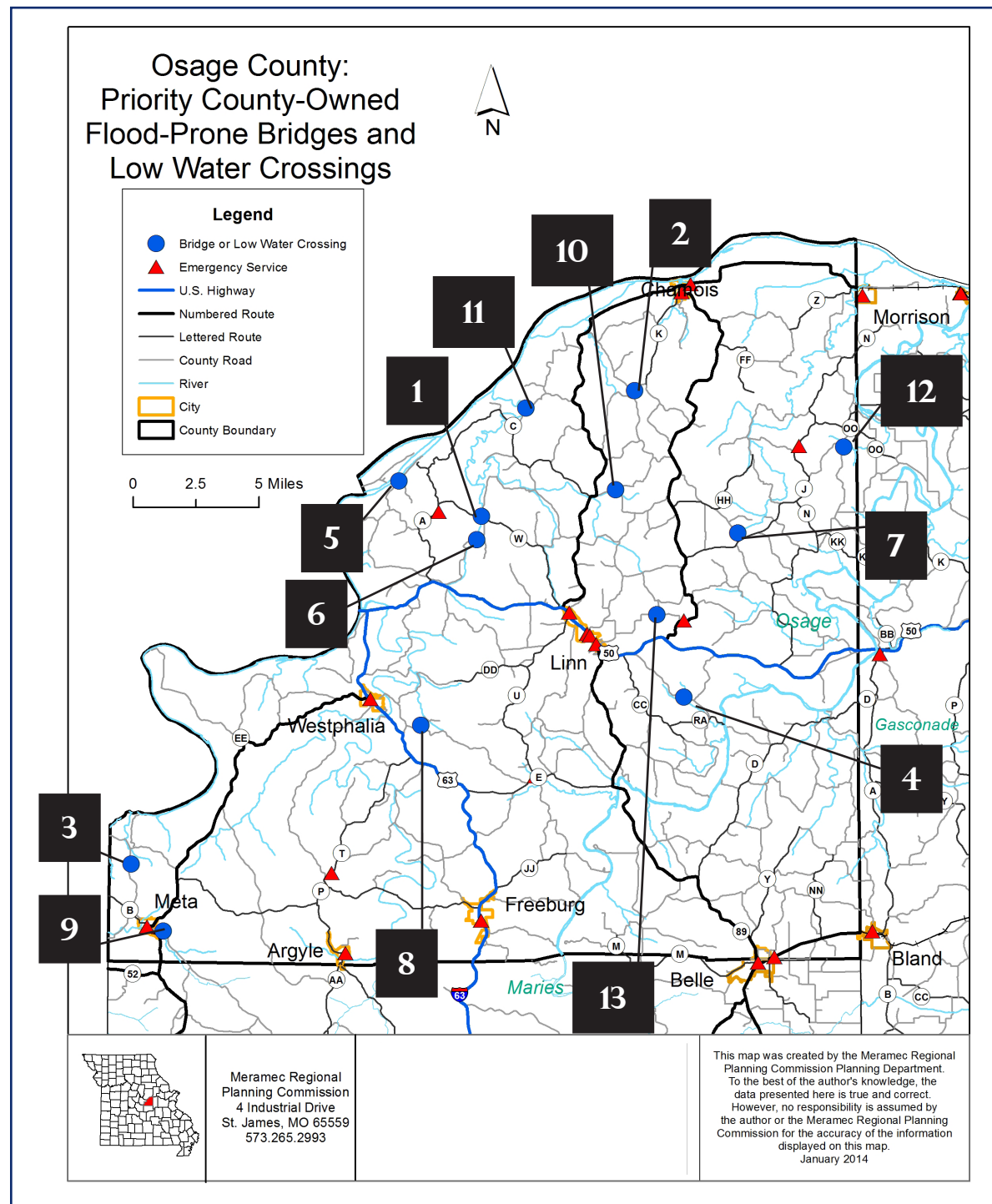
Oct. 9, 2013

BRIDGE 11
Fifth Street—Belle



—OSAGE COUNTY—

PRIORITY COUNTY-OWNED FLOOD-PRONE BRIDGES AND LOW WATER CROSSINGS



Bridge 1—
On County Road 424
Crosses Loose Creek Branch

Bridge 2—
On County Road 317
Crosses Deer Creek Branch

Bridge 3—
On County Road 508
Crosses Profits Creek

Bridge 4—
On County Road 801
Crosses N. Fork of Pointers Creek

Bridge 5—
On County Road 412
Crosses Luzon Creek

Bridge 6—
On County Road 403
Crosses Loose Creek

Bridge 7—
On County Road 232
Crosses Bailey's Creek tributary

Bridge 8—
On County Road 612
Crosses Bear Creek

Bridge 9—
On County Road 542
Crosses Sugar Creek

Bridge 10—
On County Road 312
Crosses Luystown Creek

Bridge 11—
On County Road 432
Crosses Darrow Branch

Bridge 12—
On County Road 241
Crosses Richland Creek tributary

Bridge 13—
On County Road 302

BRIDGE NO.	YEAR BUILT	STRUCTURE TYPE	TRIBUTARY/STREAM	FLOODING FREQUENCY	REPAIR & MAINTENANCE	LATITUDE	LONGITUDE	ELEVATION (FT)	TRAFFIC COUNT DATE	AVERAGE DAILY TRAFFIC	DETOUR TIME (MINUTES)
1	Unk.	Pipe	Loose Creek Branch	5	\$3,000	N38.5467500	W091.9181667	558	01/23/13	379	14
2	Unk.	Slab	Deer Creek Branch	6		N38.6181333	W091.8042833	541	02/01/13	99	13
3	Unk.	Slab	Profits Creek	6	\$2,500	N38.3480167	W091.1778333	647	02/21/13	108	4
4	Unk.	Slab	N. Fork Pointers	6	\$1,000	N38.4409500	W091.7712167	612	08/27/10	92	7
5	Unk.	Bridge	Luzon Creek	4		N38.5677500	W091.9784000	535	02/13/13	63	2
6	Unk.	Slab	Loose Creek	6	\$3,000	N38.5334000	W091.9219000	581	02/13/13	162	10
7	Unk.	Bridge	Bailey's Creek trib.			N38.5353167	W091.7299667	785	01/15/13	92	10
8	Unk.	Slab	Bear Creek	6		N38.4265500	W091.9643500	613	03/14/13	533	18
9	Unk.	Bridge	Sugar Creek	6	\$2,000	N38.3092000	W091.1547167	625	02/21/13	131	12
10	Unk.	Low Water	Luystown Creek		\$6,000	N38.5612000	W091.8192500	645	08/17/10	37	9
11	Unk.	Bridge	Darrow Branch	1		N38.6089167	W091.8843335	527	02/01/13	130	15
12	Unk.	Low Water	Richland Creek trib.	2	\$3,000	N38.5839833	W091.6512833	547	01/15/13	321	10
13	Unk.	Low Water		2	\$3,000	N38.4886667	W091.7902333	783	01/23/13	165	6



OSAGE COUNTY BRIDGE PHOTOS

BRIDGE 1
CR 424



Feb. 8, 2013

BRIDGE 2
CR 317



Feb. 8, 2013

BRIDGE 3
CR 508



March 1, 2013

BRIDGE 4
CR 801



Jan. 9, 2013

BRIDGE 5
CR 412



Feb. 8, 2013

BRIDGE 6
CR 403



Feb. 8, 2013

BRIDGE 7
CR 232



Jan. 18, 2013

BRIDGE 8
CR 612



March 7, 2013

BRIDGE 9
CR 542



March 1, 2013

BRIDGE 10
CR 312



Jan. 18, 2013

BRIDGE 12
CR 241

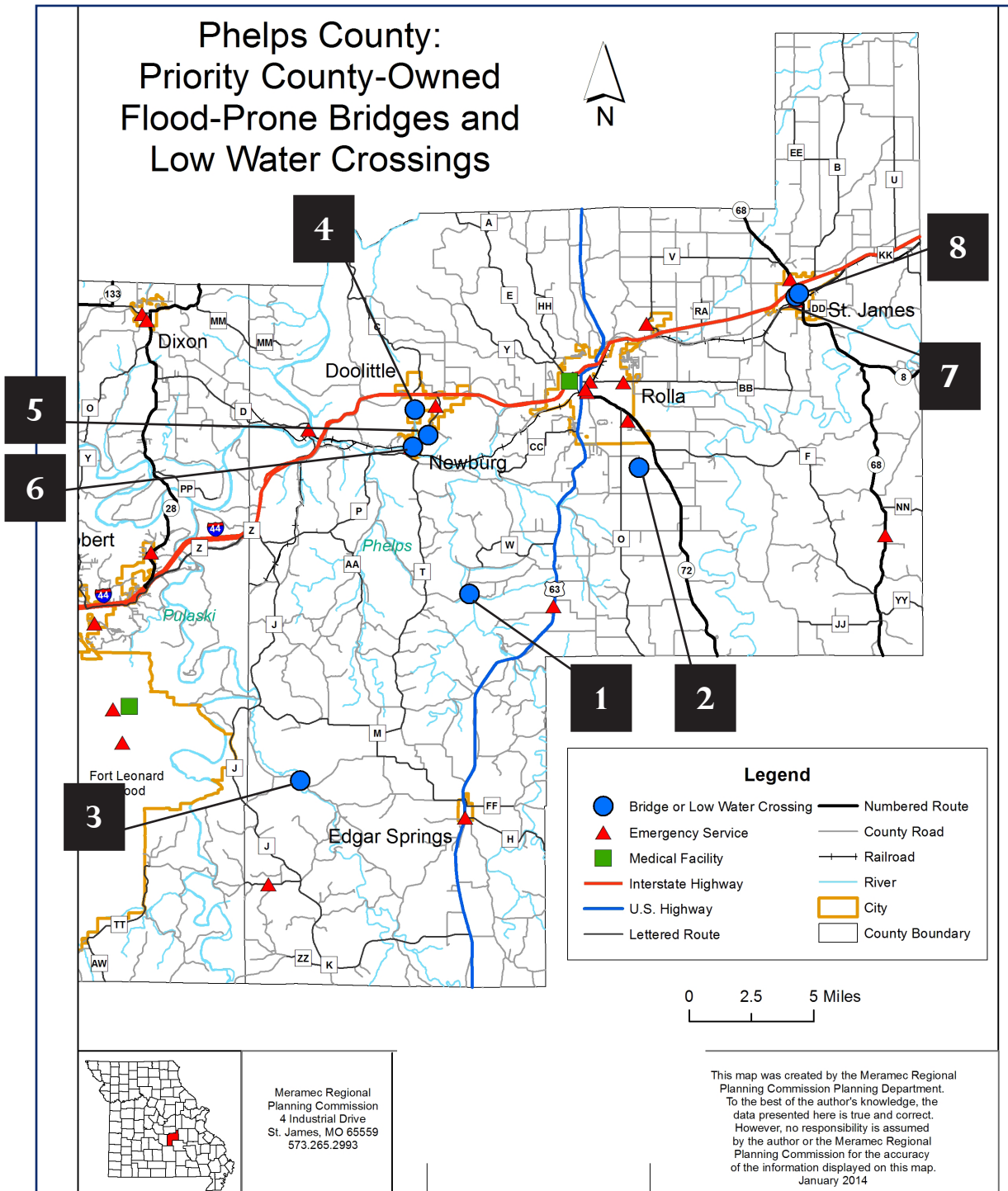


Jan. 9, 2013

*Photo Not Available
for bridges eleven and
thirteen*

—PHELPS COUNTY—

PRIORITY COUNTY-OWNED FLOOD-PRONE BRIDGES AND LOW WATER CROSSINGS



Bridge 1—
On County Road 7460 in Vida
Crosses Little Piney

Bridge 2—
On County Road 5120
Crosses Little Dry Fork

Bridge 3—
On County Road 6410
Crosses Spring Creek

Bridge 4—
On MacArthur Street in Doolittle
Crosses a Little Piney tributary

Bridge 5—
On East Fourth Street in Newburg
Crosses Newburg Creek

Bridge 6—
On Water Street in Newburg
Crosses Newburg Creek

Bridge 7—
On Meramec Street in St. James

Bridge 8—
On Walters Street in St. James

BRIDGE NO.	YEAR BUILT	STRUCTURE TYPE	TRIBUTARY/STREAM	LATITUDE	LONGITUDE	ELEVATION (FT)	TRAFFIC COUNT DATE	AVERAGE DAILY TRAFFIC	DETOUR TIME (MINUTES)
1	1900	Low Water	Little Piney	N37.8284500	W91.8615200	842	10/26/12	81	5
2	1900	Low Water	Little Dry Fork	N37.9009500	W91.7351833	969	01/03/13	59	1
3	1900	Low Water	Spring Creek	N37.7207333	W91.9872167	781	11/09/12	36	17
4		Culvert-Slab	Little Piney tributary	N37.9366000	W91.8998000		12/31/12	203	5
5	2010		Newburg Creek	N37.9158333	W91.6180167	751	08/13/12	25	2
6		Low Water	Newburg Creek	N37.9148000	W91.9013667	711	08/13/12	221	1
7	1946	Box Culvert		N37.9994333	W91.6180167	1031	08/31/12	828	
8	1965	Bridge		N38.0013833	W91.6155833	1090	08/31/12	716	1

PHELPS COUNTY BRIDGE PHOTOS

BRIDGE 1
CR 7460



Nov. 13, 2012

BRIDGE 2
CR 5120



Nov. 13, 2012

BRIDGE 3
CR 6410



Nov. 13, 2012

BRIDGE 4
MacArthur Street—Doolittle



Dec. 31, 2012

BRIDGE 5
East Fourth Street—Newburg



Aug. 7, 2012

BRIDGE 6
Water Street—Newburg



Aug. 7, 2012

BRIDGE 7
Meramec Street—St. James



April 23, 2012

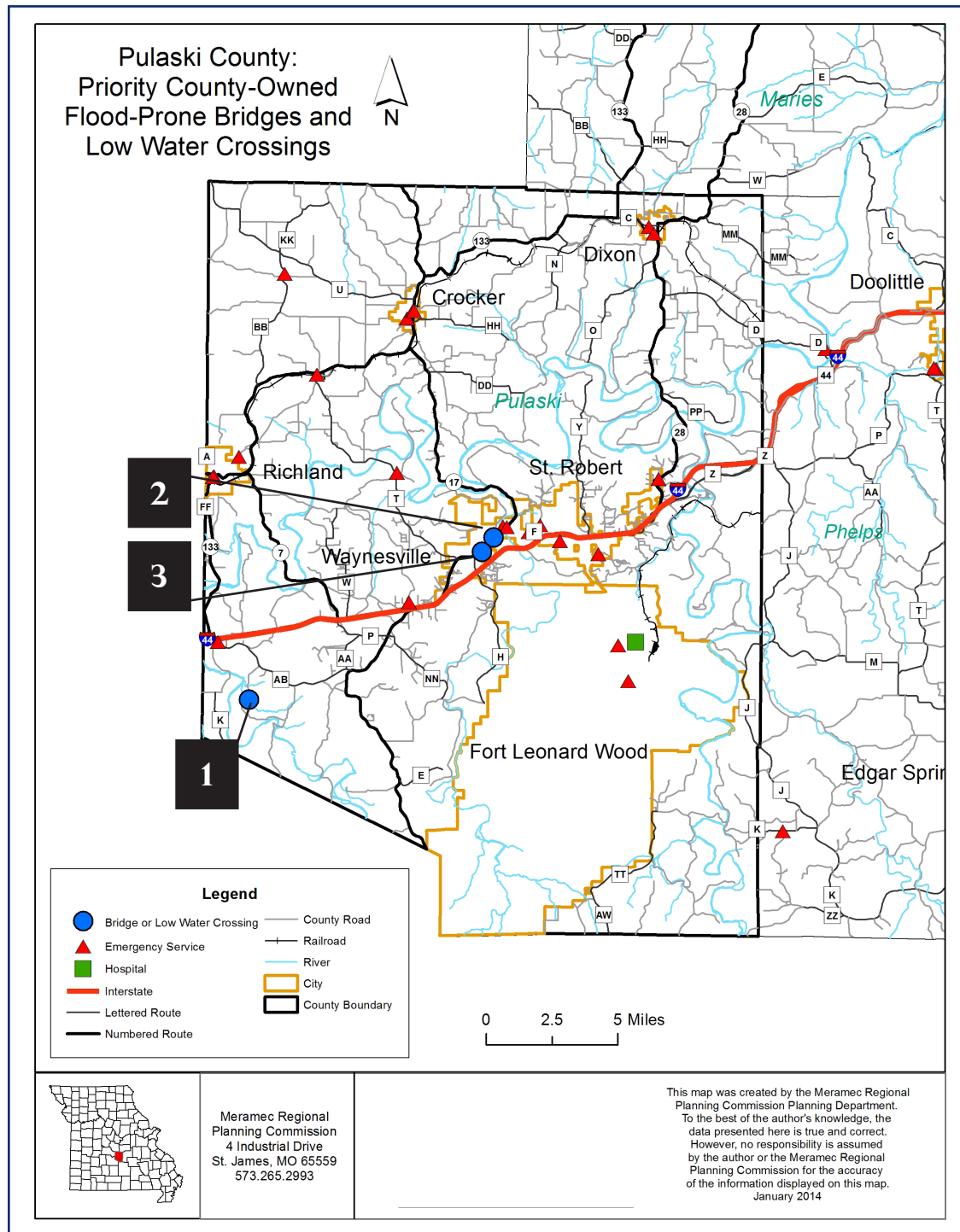
BRIDGE 8
Walters Street—St. James



April 23, 2012

— PULASKI COUNTY —

PRIORITY COUNTY-OWNED FLOOD-PRONE BRIDGES AND LOW WATER CROSSINGS



Bridge 1—
On Southbend Road
Crosses an unnamed creek



Photos taken May 7, 2012

Bridge 2—
On Dyer Street—Waynesville
Crosses Mitchell Creek



Photos taken May 7, 2012

Bridge 3—
On Old Highway H—Waynesville
Crosses Mitchell Creek



Photos taken May 7, 2012

BRIDGE NO.	YEAR BUILT	STRUCTURE TYPE	TRIBUTARY/STREAM	FLOODING FREQUENCY	REPAIR & MAINTENANCE	LATITUDE	LONGITUDE	ELEVATION (FT)	TRAFFIC COUNT DATE	AVERAGE DAILY TRAFFIC	DETOUR TIME (MINUTES)
1	1970	Culvert Slab	Unnamed creek			N37.7352000	W92.3805500	913			8
2		LW-Cement	Mitchell Creek			N37.8235333	W92.2099833	802	09/14/12	377	2
3		LW-Cement	Mitchell Creek			N37.8156833	W092.2181833	828	09/14/12	1798	5

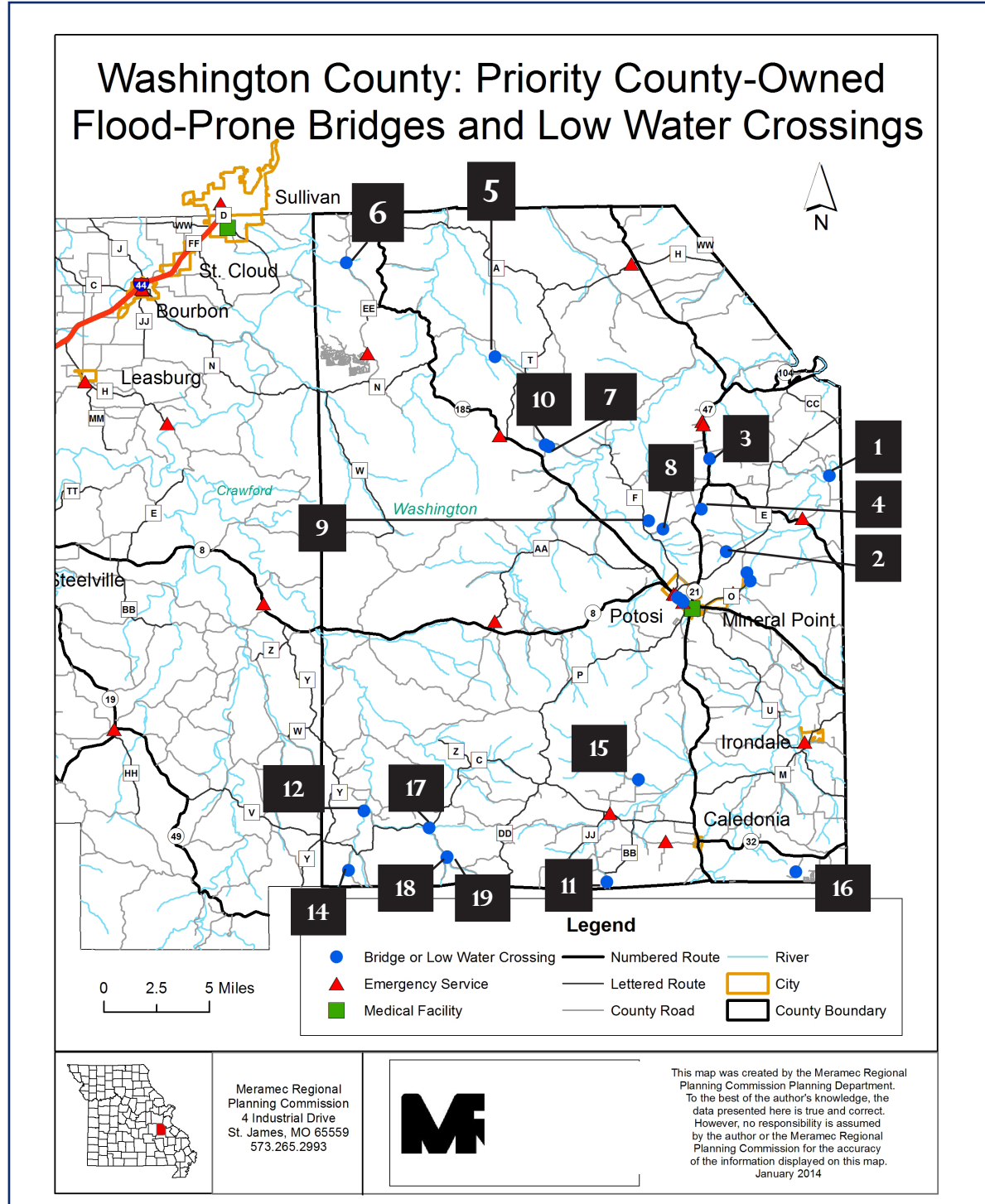
* LW= Low Water Crossing

Data Source: MRPC analysis 2012-2014



—WASHINGTON COUNTY—

PRIORITY COUNTY-OWNED FLOOD-PRONE BRIDGES AND LOW WATER CROSSINGS



Bridge 1—
On Tiff Road 408
Crosses Mill Creek

Bridge 2—
On Radio Station Road 418
Crosses Keyes Branch

Bridge 3—
On Settles Hollow Road 437
Crosses Old Mines Creek

Bridge 4—
On Thomlinson Road
Crosses Old Mines Creek

Bridge 5—
On Goose Creek Road 303
Crosses Pinery Creek

Bridge 6—
On Hamilton Hollow Road 202
Crosses Hamilton Creek

Bridge 7—
On Lick Skillet Road 320
Crosses Pucket Branch

Bridge 8—
On Simpson Road 334

Bridge 9—
On Duncan Road 343
Crosses Mine Au Breton tributary

Bridge 10—
On Pelican Ridge Road 304
Crosses Pucket Branch

Bridge 11—
On Robinson Road
Crosses James Creek

Bridge 12—
On Bailey Branch Road 664
Crosses Courtois River

Bridge 13—
On Bailey Branch Road 664

Bridge 14—
On Wells Road 652
Crosses Indian Creek

Bridge 15—
On King Road 622
Crosses Clear Creek

Bridge 16—
On Carr Road 535
Crosses Lost Creek

Bridge 17—
On Cubb Creek Road 650
Crosses Cubb Creek

Bridge 18—
On Cubb Creek Road 650
Crosses Cubb Creek tributary

Bridge 19—
On Keith Cemetery Road
Crosses Cubb Creek

BRIDGE NO.	YEAR BUILT	STRUCTURE TYPE *	TRIBUTARY OR STREAM	LATITUDE	LONGITUDE	ELEVATION (FT)	DATE OF TRAFFIC COUNT	AVERAGE DAILY TRAFFIC	DETOUR TIME (MINUTES)
1		LW-Cement	Mill Creek	N38.0154333	W090.6506333	720	05/16/13	257	9
2		LW-Cement	Keyes Branch	N37.9645833	W090.37419500	940	05/16/13	324	
3		Concrete	Old Mines Creek	N38.0291333	W090.7543667	736	05/08/13	232	11
4		Concrete	Old Mines Creek	N37.9945200	W090.7627500				Cut Off
5		Concrete	Pinery Creek	N38.1028000	W090.9395667	744	04/18/13	95	10
6		Concrete	Hamilton Creek	N38.1697833	W091.0672883	634	07/25/13	83	11
7		Concrete	Pucket Branch	N38.0400167	W090.8943000	808	04/18/13	218	37
8		Concrete		N37.9812167	W090.7967667	839	07/25/13	278	8
9		Concrete	Mine Au Breton trib.	N37.9871700	W090.8089500		04/18/13	116	Cut Off
10		Concrete	Pucket Branch	N38.0412833	W090.8973833	833	05/08/13	344	13
11	1985	Concrete	James Creek	N37.738933	W090.8525500	964	08/30/13	60	Cut Off
12	1989	Concrete	Courtois River	N37.7917000	W091.0618667	884	06/20/13	60	8
13	1993	Concrete							
14	1990	Concrete	Indian Creek	N37.7508333	W0910764833	1300	06/20/13	19	Cut Off
15	1965	Concrete	Clear Creek	N37.8089333	W090.8223000	865	07/10/13	136	Negligible
16	1970	Concrete	Lost Creek	N37.7427667	W090.6884000	918	07/10/13	12	Cut Off
17		Concrete	Cubb Creek	N37.7789167	W091.0057667	942	08/02/13	110	8
18		Concrete	Cubb Creek trib.	N37.7588500	W090.9905833	978	08/02/13	27	5
19		Concrete	Cubb Creek	N37.7582500	W090.9908167	1013	08/02/13	27	5

* LW= Low Water Crossing

Data Source: MRPC analysis 2012-2014



WASHINGTON COUNTY BRIDGE PHOTOS

BRIDGE 1
Tiff Road 408



Oct. 3, 2013

BRIDGE 2
Radio Station Road 418



Oct. 3, 2013

BRIDGE 3
Settles Hollow Road 437



Oct. 3, 2013

BRIDGE 4
Thomlinson Road



Oct. 3, 2013

BRIDGE 5
Goose Creek Road 303



Oct. 3, 2013

BRIDGE 6
Hamilton Hollow Road



Oct. 3, 2013

BRIDGE 7
Lick Skillet Road 320



Oct. 3, 2013

BRIDGE 8
Simpson Road 334



Oct. 3, 2013

BRIDGE 9
Duncan Road 343



Oct. 3, 2013

BRIDGE 10
Pelican Ridge Road 304



July 1, 2013

BRIDGE 11
Robinson Road



Oct. 3, 2013

BRIDGE 12
Bailey Branch Road 664



Oct. 3, 2013

BRIDGE 13
Bailey Branch Road 664

Photo Not Available

BRIDGE 14
Wells Road 652



Oct. 3, 2013

BRIDGE 15
King Road 622



Oct. 3, 2013

BRIDGE 16
Carr Road 535



Oct. 3, 2013

BRIDGE 17
Cubb Creek Road 650



Oct. 3, 2013

BRIDGE 18
Cubb Creek Road 650



Oct. 3, 2013

BRIDGE 19
Keith Cemetery Road



Oct. 3, 2013