

## Appendix E

### PHASE I: SIDEWALK SURVEY

Crawford County, City of Sullivan  
Gasconade County, City of Hermann  
    Maries County, City of Belle  
    Osage County, City of Linn  
    Phelps County, City of Rolla  
Phelps County, City of St. James  
Pulaski County, City of Waynesville

### PHASE II: SIDEWALK SURVEY

Crawford County, City of Bourbon  
    Crawford County, City of Cuba  
Crawford County, City of Steelville  
    Dent County, City of Salem  
Gasconade County, City of Owensville  
    Pulaski County, City of Crocker  
    Pulaski County, City of Dixon  
    Pulaski County, City of St. Robert  
Washington County, City of Potosi

### PHASE III: SIDEWALK SURVEY

    Gasconade County, City of Bland  
Gasconade County, City of Rosebud  
    Maries County, City of Vienna  
    Osage County, City of Chamois  
    Osage County, City of Freeburg  
    Phelps County, City of Doolittle  
    Phelps County, City of Newburg  
Washington County, City of Caledonia  
    Washington County, City of Irondale  
Washington County, City of Mineral Point





# City of Sullivan Sidewalk Inventory

This inventory was completed in January 2012 by the city of Sullivan, with assistance from the Meramec Regional Planning Commission. Data for the map was gathered through a “windshield” survey and is only intended to be a general representation of sidewalk condition.

## Sidewalk Conditions

The city of Sullivan has approximately 111,700 linear feet (21.2 miles) of existing sidewalks. The majority of the sidewalks are considered to be in good condition. Most of the good sidewalks are located on the north side of town or along main thoroughfares. The table below shows the condition of sidewalks.

Condition	Approximate Linear Feet	Percent of Total
Good	76,500	68
Fair	25,300	23
Poor	9,900	9
Totals:	111,700	100

## Photo Examples



Good Condition: Roundabout at intersection of Taylor and Washington



Fair Condition: Taylor Street, west side looking south



Poor Condition: Taylor Street, east side looking south

## Questionnaire Results

The city of Sullivan currently has sidewalk codes that address maintenance, construction and snow removal. Sidewalks exist in the downtown area, and are generally of fair condition. The adequacy of sidewalks in Sullivan is also fair. Width of existing sidewalks is fair, and the majority of sidewalks have ramps where they join the street.

Only 5 percent of sidewalks in Sullivan are ADA accessible.

On a scale of 1-10, with “1” being unimportant and “10” being very important, sidewalks are considered a “9” to the citizens of Sullivan. Sidewalks exist on streets leading to the schools in Sullivan. Crosswalks also exist at the schools. Some students have to cross major state highways to get to school.

In the future, due to citizen interest, the city will seek to expand existing sidewalks into unserved areas as well as where gaps exist. The jurisdiction does not currently have, but is considering, a comprehensive sidewalk plan. The city would first target high pedestrian traffic areas before moving on to the rest of the jurisdiction. The motives for the city to have a comprehensive sidewalk plan are health/wellness, beautification and accessibility.



# City of Sullivan, MO Sidewalks

## Legend

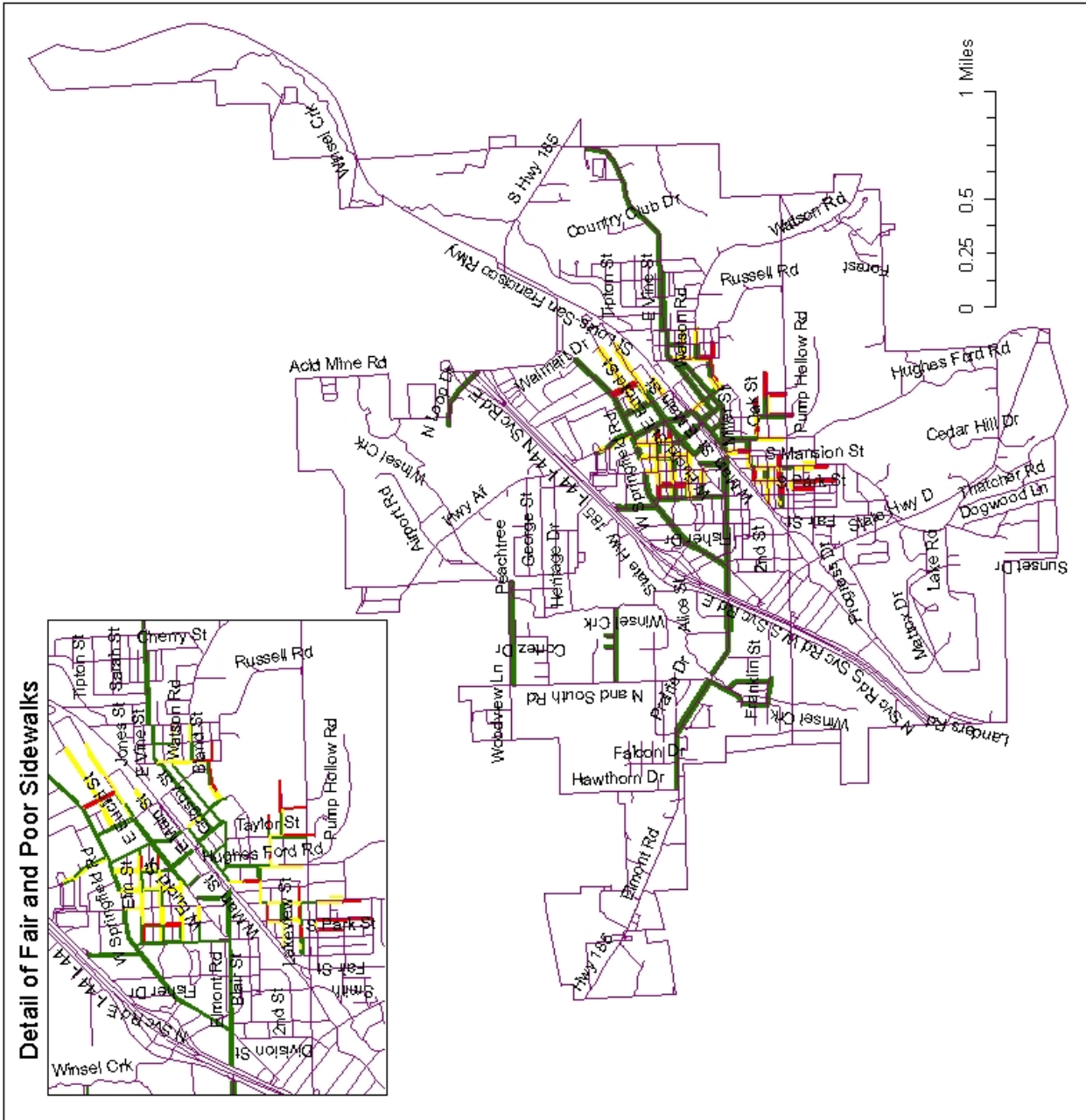
### City Sidewalks

- Good Approx. 76,500 ft
- Fair Approx. 25,300 ft
- Poor Approx. 9,900 ft

Created by the  
 Meramec Regional  
 Planning Commission  
 4 Industrial Drive  
 St. James, MO 65559  
 In partnership with the  
 Missouri Department of  
 Transportation  
 March 2012



To the best of the author's knowledge, the data presented here is true and correct. However, no responsibility is assumed by the author. Data for this map was gathered through a "windshield" survey and is intended to be a general representation of sidewalk condition only.



# City of Hermann

## Sidewalk Inventory

This inventory was completed in May 2012 by the city of Hermann with the assistance of the MRPC. Data for the map was gathered through a “windshield” survey and is only intended to be a general representation of sidewalk condition.

### Sidewalk Conditions

The city of Hermann has approximately 51,880 linear feet (9.8 miles) of existing sidewalks. The majority of the sidewalks are considered to be in good condition. The good sidewalks are located throughout town. The fair and poor sidewalks are scattered throughout the town and do not represent whole streets or sections. The table below shows the condition of sidewalks.

Condition	Approximate Linear Feet	Percent of Total
Good	41,730	80.4
Fair	8,450	16.3
Poor	1,700	3.3
Totals:	51,880	100

### Photo Examples



Good Condition: West Fifth Street, south side looking west





Fair Condition: West Fifth Street, north side looking west



Poor Condition: West Third Street, north side looking east

## Questionnaire Results

The city of Hermann currently has sidewalk codes that address maintenance and snow removal. Sidewalks exist in the downtown area, and all sidewalks are generally of good condition. The adequacy of sidewalks in Hermann is good. Width of existing sidewalks is sufficient, with some areas being better than others, and the majority of sidewalks have ramps where they join the street.

An estimated 75 percent of sidewalks in Hermann are ADA accessible.

On a scale of 1-10, with “1” being unimportant and “10” being very important, sidewalks are considered a “9” to the citizens of Hermann. Sidewalks exist on streets leading to the schools in Hermann. Crosswalks also exist at the schools. Some students have to cross major state highways to get to school.

The city recently completed a Safe Routes to School project along Highway 100, connecting the elementary school with the middle/high school complex.

In the future, the city will seek to expand existing sidewalks into un-served areas as well as where gaps exist. Hermann currently has a comprehensive sidewalk plan in development. The city will first target the downtown area and a few neighborhoods where streets will be rebuilt if a bond issue passes in August 2012. The city also notes that any improvements to sidewalks would be funded by assessments to property owners. The motives for the city to have a comprehensive sidewalk plan are health/wellness, beautification and accessibility.

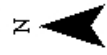
# City of Hermann, MO Sidewalks

**Legend**

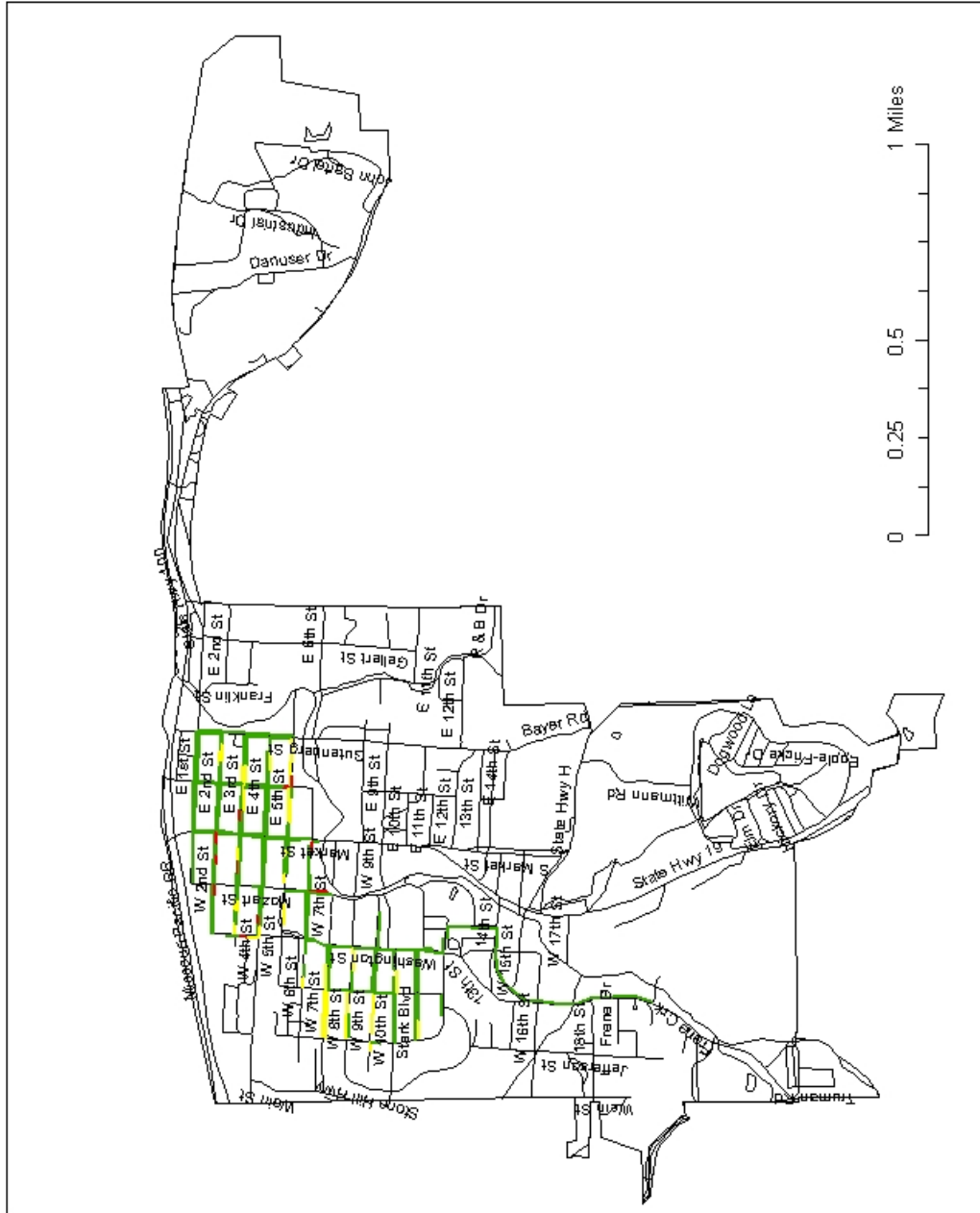
**CONDITION**

- Good Approx. 41,730 ft.
- Fair Approx. 8,450 ft.
- Poor Approx. 1,700 ft.

Created by the  
Meramec Regional  
Planning Commission  
4 Industrial Drive  
St. James, MO 65559  
in partnership with the  
Missouri Department of  
Transportation  
May 2012



To the best of the author's knowledge, the data presented here is true and correct. However, no responsibility is assumed by the author. Data for this map was gathered through a "windshield" survey and is intended to be a general representation of sidewalk condition only.





# City of Belle

## Sidewalk Inventory

This inventory was completed in January 2012 by the city of Belle, with assistance from the Meramec Regional Planning Commission. Data for the map was gathered through a “windshield” survey and is only intended to be a general representation of sidewalk condition.

### Sidewalk Conditions

The city of Belle has approximately 21,415 linear feet (4 miles) of existing sidewalks. The majority of the sidewalks are considered to be in good condition. The good sidewalks are scattered throughout town, but are most consistently found along the main roads near the school and downtown areas. The table below shows the condition of sidewalks.

Condition	Approximate Linear Feet	Percent of Total
Good	12,515	58
Fair	4,450	21
Poor	4,450	21
Totals:	21,415	100

### Photo Examples



Good Condition:  
Third Street,  
south side  
looking east



Fair Condition: Second Street, south side looking east



Poor Condition: First Street, south side looking east

## Questionnaire Results

The city of Belle does not currently have sidewalk codes that address maintenance, construction or snow removal. Sidewalks exist in the downtown area, and are generally of poor condition. The adequacy of sidewalks in Belle is also poor. Width of existing sidewalks is poor, and sidewalks do not have curbs or ramps where they join the street.

Only 10 percent of sidewalks in Belle are ADA accessible.

On a scale of 1-10, with “1” being unimportant and “10” being very important, sidewalks in Linn are considered a “10” to the citizens of Belle. Sidewalks exist on streets leading to the schools in Belle. Crosswalks also exist at the schools. Some students have to cross major state highways to get to school.

Due to citizen interest, the city is currently seeking to expand existing sidewalks into un-served areas as well as where gaps exist. Currently, the jurisdiction has a comprehensive sidewalk plan in development. The city is targeting State Highway 28 and the streets leading to the downtown area for sidewalk expansion/improvement. The primary motive for the city to have a comprehensive sidewalk plan is health and wellness.



# City of Belle, MO Sidewalks

**Legend**

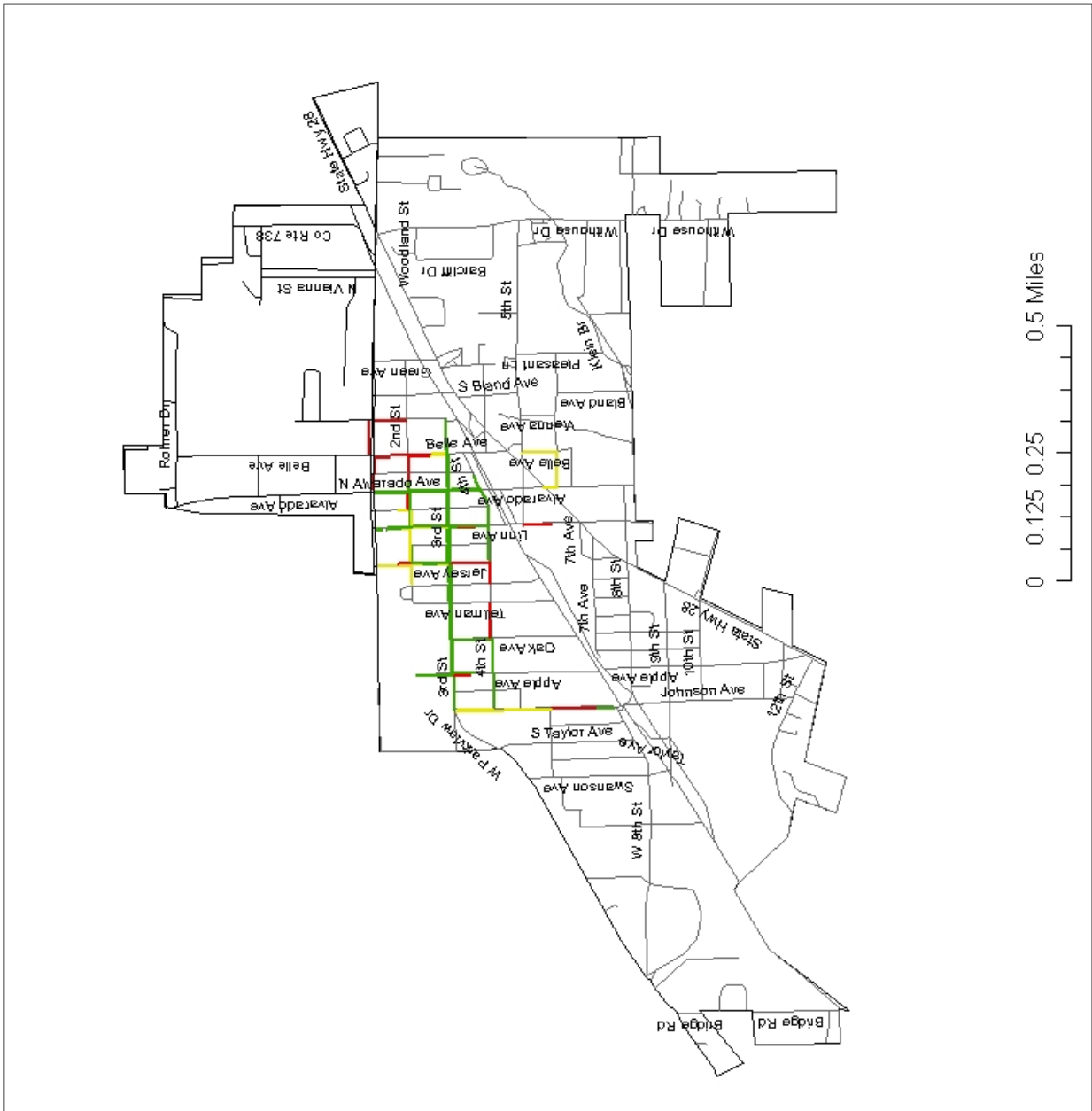
**City Sidewalks**

- Good Approx. 12,515 ft
- Fair Approx. 4,450 ft
- Poor Approx. 4,450 ft

Created by the  
Meramec Regional  
Planning Commission  
4 Industrial Drive  
St. James, MO 65559  
In partnership with the  
Missouri Department of  
Transportation  
April 2012



To the best of the author's knowledge, the data presented here is true and correct. However, no responsibility is assumed by the author. Data for this map was gathered through a "windshield" survey and is intended to be a general representation of sidewalk condition only.



# City of Linn

## Sidewalk Inventory

This inventory was completed in January 2012 by the city of Linn, with assistance from the Meramec Regional Planning Commission. Data for the map was gathered through a “windshield” survey and is only intended to be a general representation of sidewalk condition.

### Sidewalk Conditions

The city of Linn has approximately 17,200 linear feet (3.25 miles) of existing sidewalks. The majority of the sidewalks are considered to be in good condition. Most of the good sidewalks are located in the downtown area and along U.S. Highway 50 as it runs through the city. The table below shows the condition of sidewalks.

Condition	Approximate Linear Feet	Percent of Total
Good	14,700	85
Fair	1,800	11
Poor	700	4
Totals:	17,200	100

### Photo Examples



Good Condition: Corner of U.S. Hwy 50 (Main) and Third Street, south side looking east



Fair Condition: Benton Street, north side looking west



Poor Condition: Corner of Benton Street and Fifth Street, south side

## Questionnaire Results

The city of Linn currently has sidewalk codes that address maintenance, construction and snow removal as part of new development. Sidewalks exist in the downtown area, and are generally of fair condition. The adequacy of sidewalks in Linn is also fair. Width of existing sidewalks is fair, and the majority of sidewalks have an equal number of curbs and ramps where they join the street.

Approximately 60 percent of sidewalks in Linn are ADA accessible.

On a scale of 1-10, with “1” being unimportant and “10” being very important, sidewalks in Linn are considered a “7” to the citizens of Linn. Sidewalks exist on streets leading to the schools in Linn. Crosswalks also exist at the schools. Students have to cross major state highways to get to some schools.

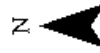
Due to citizen interest, the city is currently seeking to expand existing sidewalks into un-served areas as well as where gaps exist. The city also plans to continue seeking expansions in the future. The jurisdiction has no comprehensive sidewalk plan, but is considering it. The city would replace and upgrade existing sidewalks first, then look at expanding the sidewalk system. The motives for the city to consider a sidewalk expansion would be health/wellness, beautification and accessibility.



# City of Linn, MO Sidewalks

Legend	
City Sidewalks	
	Good Approx. 14,700 ft
	Fair Approx. 1,800 ft
	Poor Approx. 700 ft

Created by the  
Meramec Regional  
Planning Commission  
4 Industrial Drive  
St. James, MO 65559  
in partnership with the  
Missouri Department of  
Transportation  
May 2012



To the best of the author's knowledge, the data presented here is true and correct. However, no responsibility is assumed by the author. Data for this map was gathered through a "windshield" survey and is intended to be a general representation of sidewalk condition only.





# City of Rolla

## Sidewalk Inventory

This inventory was completed in September 2011 by the city of Rolla.

### Sidewalk Conditions

The city of Rolla has approximately 380,688 linear feet (72.1 miles) of existing sidewalks and an additional 92,400 linear feet (17.5 miles) of walking bike path. The majority of the sidewalks are considered to be in good condition. Most of the good sidewalks are located in the downtown area. The table below shows the condition of sidewalks.

Condition	Linear Feet	Percent of Total
Good	263,472	69
Fair	103,488	27
Poor	13,728	4
Totals:	380,688	100

### Photo Examples



This sidewalk, located on the south side of Hwy. 72, is in good condition.



This sidewalk, in fair condition, is located on Cedar Street.



Sidewalks on portions of Olive Street are in poor condition.

## Questionnaire Results

The city of Rolla currently has sidewalk codes that address maintenance and construction as part of new development. Sidewalks exist in the downtown area, and are generally of good condition. However, the adequacy of sidewalks in Rolla is only fair. Width of existing sidewalks is sufficient, and the majority of sidewalks have ramps where they join the street.

Although 100 percent of sidewalks in Rolla are ADA accessible, they are not 100 percent compliant, with 2 percent cross slope and truncated domes.

On a scale of 1-10, sidewalks are very important to the citizens of Rolla. Sidewalks exist on streets leading to the schools in Rolla. Students have to cross major state highways to get to some schools.

Due to citizen interest, the city is currently seeking to expand existing sidewalks into un-served areas as well as where gaps exist. The jurisdiction has no comprehensive sidewalk plan, but is considering it.





# City of St. James

## Sidewalk Inventory

This inventory was completed in 2006 by the city of St. James.

### Sidewalk Conditions

The city of St. James has approximately 67,350 linear feet (12.75 miles) of existing sidewalks and an additional 27,456 linear feet (5.2 miles) of paved walking/bike path. The overall condition of the sidewalks is poor. The following table shows the general condition of sidewalks.

Condition	Approximate Linear Feet	Percent of Total
Good	29,200	43
Fair	6,050	9
Poor	32,100	48
Totals:	67,350	100

### Photo Examples



This sidewalk, located on the north side of Washington Street, is in good condition.





This sidewalk, in fair condition, is located on Seymour Street.



A large portion of the sidewalks in St. James are in poor condition, such as these along W. Washington Street.

## Questionnaire Results

The city of St. James currently has sidewalk codes that address construction as part of new development. Sidewalks exist in the downtown area, and are generally of fair to good condition in that area. Overall, sidewalks in St. James are rated poor, as is the adequacy of the sidewalks. Width of existing sidewalks is fair, and about half of the sidewalks have curbs or ramps where they join the street.

About 25 percent of sidewalks in St. James are ADA accessible.

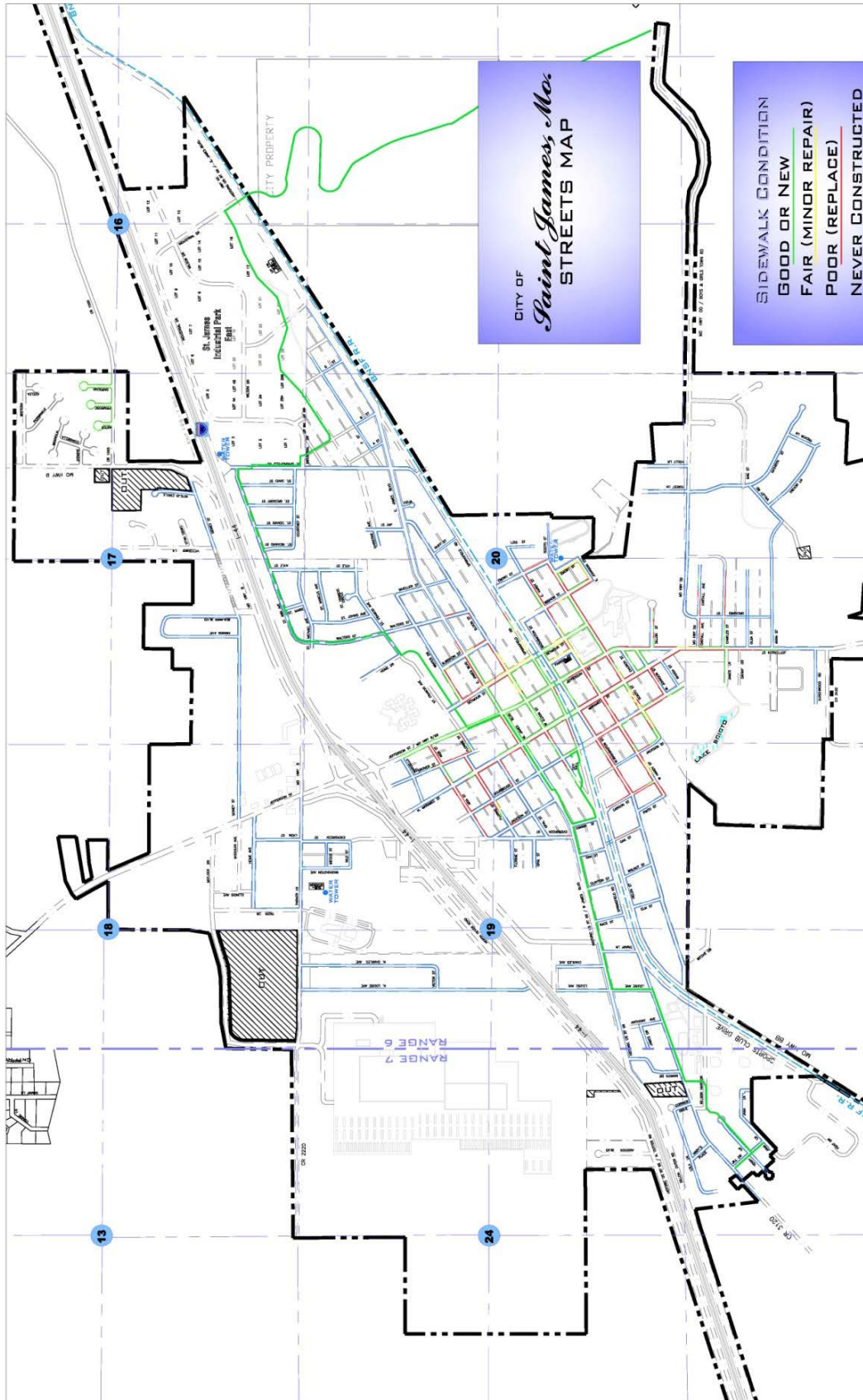
On a scale of 1-10, sidewalks are very important to the citizens of St. James. Sidewalks exist on streets leading to the schools in St. James. Students have to cross major state highways to get to some schools.

The city is currently seeking to expand existing sidewalks into un-served areas as well as where gaps exist and repair poor condition sidewalks. Expansion/improvement is targeted for the following areas:

- B Hwy. from the junction of State Hwy. 68 to the city limits
- Parker Lane from the junction of State Hwy. 68 to the St. James Middle School
- Boys Town Road/State Rt. DD from the junction of State Hwy. 68 to the city limits

The jurisdiction has no comprehensive sidewalk plan, but is considering it.







# City of Waynesville

## Sidewalk Inventory

This inventory was completed in October 2011 by the city of Waynesville, with assistance from the Meramec Regional Planning Commission. Data for the map was gathered through a “windshield” survey and is only intended to be a general representation of sidewalk condition.

### Sidewalk Conditions

The city of Waynesville has approximately 17,000 linear feet (3.2 miles) of existing sidewalks, as well as 2,350 linear feet (.45 mile) of unpaved walking trail. The majority of the sidewalks are considered to be in good condition. Most of the good sidewalks are located around or adjacent to the downtown area. The table below shows the condition of sidewalks.

Condition	Approximate Linear Feet	Percent of Total
Good	9,100	53
Fair	4,400	26
Poor	3,500	21
Totals:	17,000	100

### Photo Examples



Good Condition: Olive Street, east side looking north



Fair Condition: North Benton Street, east side looking north



Poor Condition: South Benton Street, west side looking south

## Questionnaire Results

The city of Waynesville currently has sidewalk codes that address maintenance, construction and snow removal. Sidewalks exist in the downtown area. According to the city, all sidewalks are generally in good condition. The adequacy of sidewalks in Waynesville is rated as fair. Width of existing sidewalks is fair, and the majority of sidewalks have ramps where they join the street.

Only 25 percent of sidewalks in Waynesville are rated as ADA accessible.

On a scale of 1-10, with “1” being unimportant and “10” being very important, sidewalks are considered an “8” to the citizens of Waynesville. Sidewalks do not exist on streets leading to the schools in Waynesville, though crosswalks do exist at the schools. Some students have to cross major state highways to get to school.

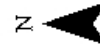
The city is currently seeking to expand existing sidewalks into un-served areas as well as where gaps exist. The jurisdiction currently has a completed comprehensive sidewalk plan. The city’s top priority is to expand sidewalks from the downtown square, down Highway 17 to Ichord Avenue to the high school down Old H Highway. The motive for the city to have a comprehensive sidewalk plan is health/wellness.



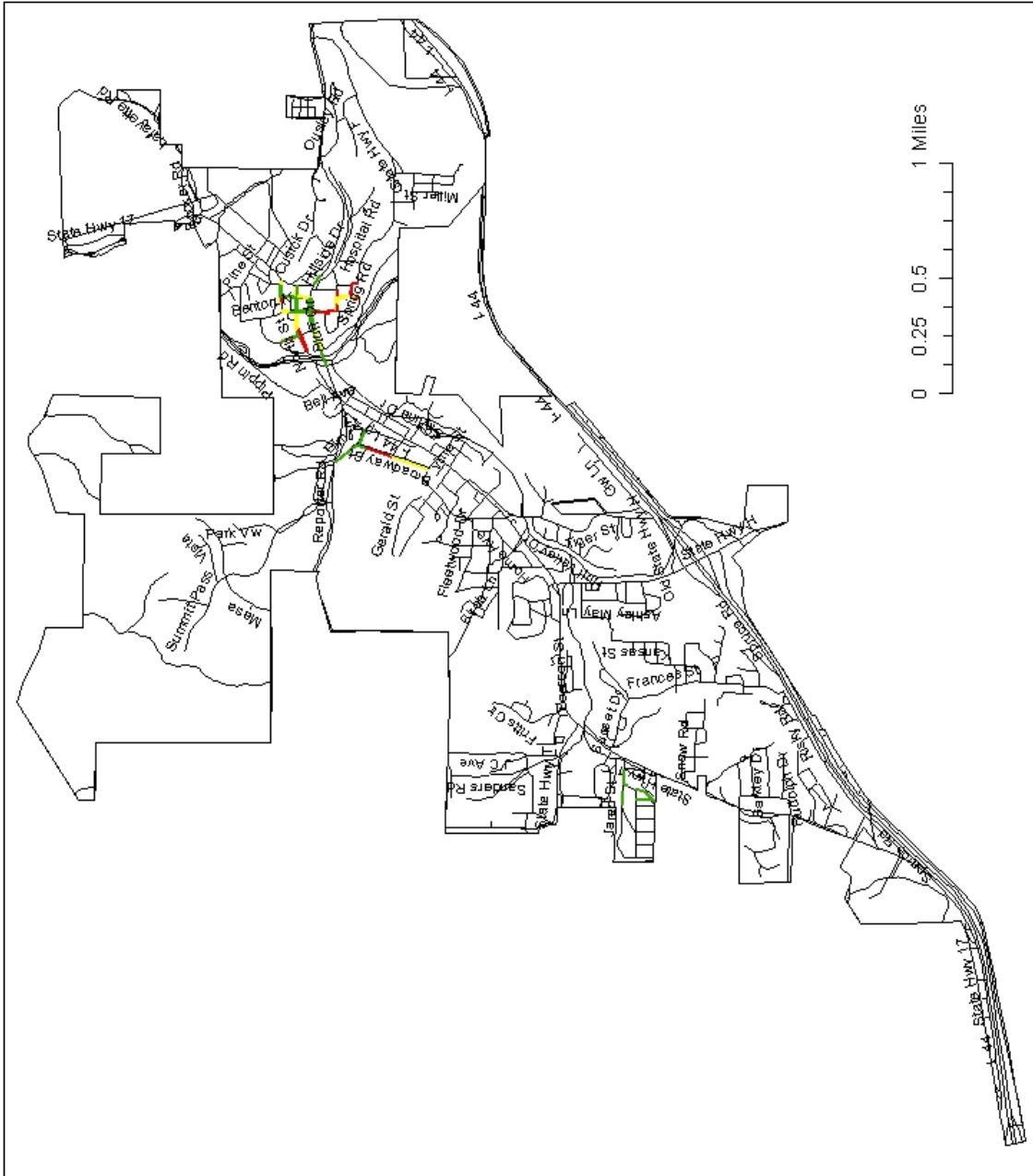
## City of Waynesville, MO Sidewalks

Legend	
City Sidewalks	
Good	Approx. 9,100 feet
Fair	Approx. 4,400 feet
Poor	Approx. 3,500 feet

Created by the  
Meramec Regional  
Planning Commission  
4 Industrial Drive  
St. James, MO 65559  
in partnership with the  
Missouri Department of  
Transportation  
May 2012



To the best of the author's knowledge, the data presented here is true and correct. However, no responsibility is assumed by the author. Data for this map was gathered through a "windshield" survey and is intended to be a general representation of sidewalk condition only.



# City of Bourbon

## Sidewalk Inventory

This inventory was completed in March 2013 by the Meramec Regional Planning Commission. Data for the map was gathered through a “windshield” survey and is only intended to be a general representation of sidewalk condition.

### Sidewalk Conditions

The city of Bourbon has approximately 14,050 linear feet (2.7 miles) of existing sidewalks. The majority of the sidewalks are considered to be in good condition. Most of the good sidewalks are located along N. Old U.S. Highway 66 and E. Pine Street. The table below shows the condition of sidewalks.

Condition	Approximate Linear Feet	Percent of Total
Good	7,600	54
Fair	3,830	27
Poor	2,620	19
Totals:	14,050	100

### Photo Examples



Good Condition: E. Pine Street, south side looking east toward Walnut Street



Fair Condition: Intersection E. Pine Street and Olive Street, southeast corner



Poor Condition: E. Pine Street, west side looking north toward N. Old U.S. Highway 66

## **Questionnaire Results**

The city of Bourbon did not respond to requests to complete the questionnaire. The following information is compiled based in the windshield survey only.

It is unknown if Bourbon has sidewalk codes that address maintenance, construction and snow removal. Sidewalks exist in the downtown area, and are generally of good condition. The adequacy of sidewalks in Owensville is poor. Width of existing sidewalks is fair, and a majority of sidewalks have curbs or steps where they join the street. Along the main thoroughfares some ADA compliant ramps have been added to existing sidewalks.

It is undetermined the percentage of sidewalks in Bourbon are ADA accessible.

It is unknown the extent of importance placed on sidewalks by the residents of Bourbon. Sidewalks do exist on streets leading to the schools in Bourbon. Crosswalks do exist at the schools. Some of the students have to cross major state highways to get to school.

A plan of future expansion of the sidewalk system is not known, nor is the existence of a comprehensive sidewalk plan known.







# City of Cuba

## Sidewalk Inventory

This inventory was completed in March 2013 by the city of Cuba, with assistance from the Meramec Regional Planning Commission. Data for the map was gathered through a “windshield” survey and is only intended to be a general representation of sidewalk condition.

### Sidewalk Conditions

The city of Cuba has approximately 57,900 linear feet (11 miles) of existing sidewalks. The majority of the sidewalks are considered to be in poor condition. Most of the good sidewalks are located in the downtown area and along Franklin Street. The table below shows the condition of sidewalks.

Condition	Approximate Linear Feet	Percent of Total
Good	39,650	68
Fair	12,550	22
Poor	5,700	10
Totals:	57,900	100

### Photo Examples



Good Condition: Intersection of North Franklin St and West Washington Blvd



Fair Condition: West Main Ave, north side looking west



Poor Condition: Washington Blvd, north side looking west

## **Questionnaire Results**

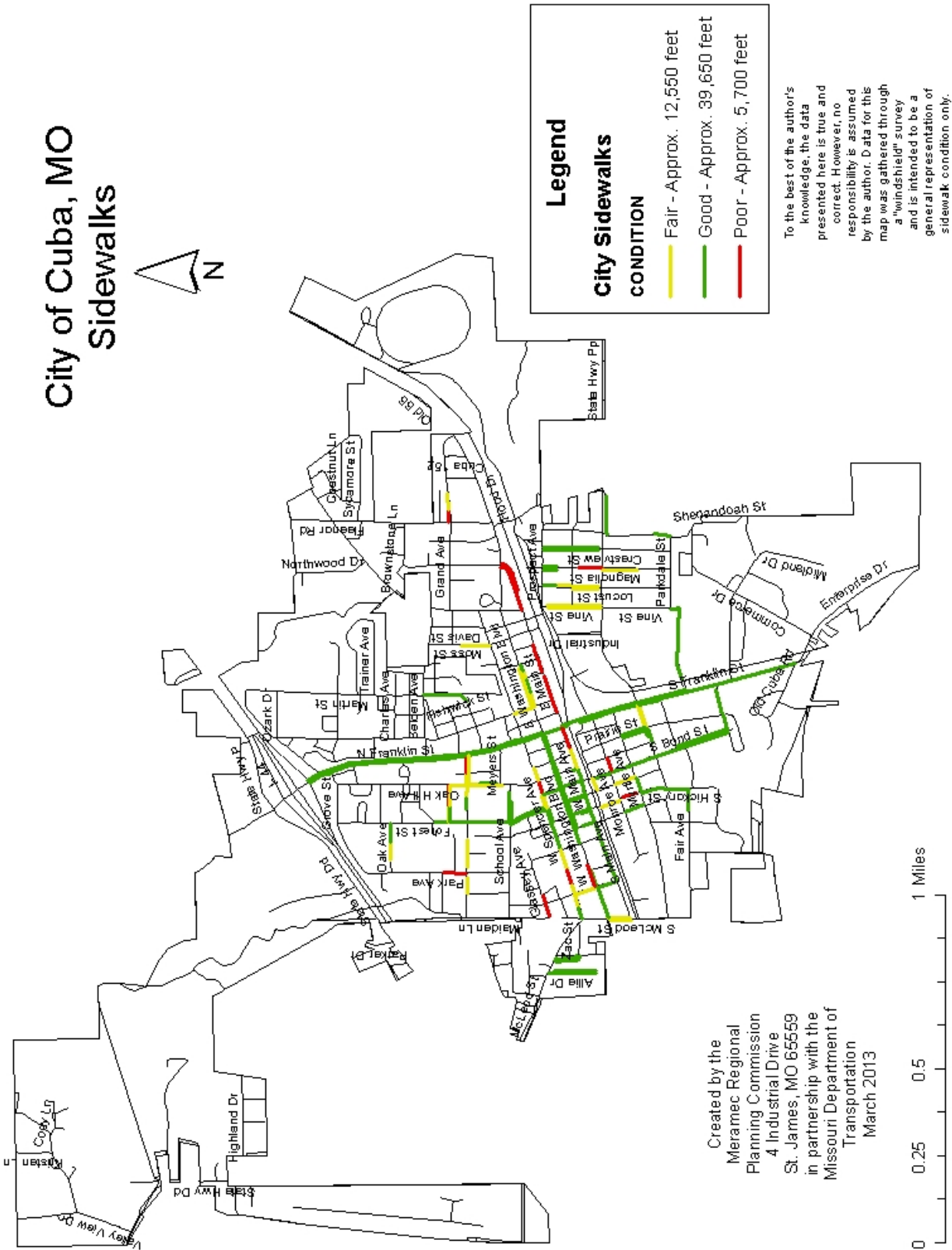
The City of Cuba currently does have sidewalk codes that address maintenance, construction and snow removal. Sidewalks exist in the downtown area, and are generally of good condition. The adequacy of sidewalks in Cuba is sufficient. Width of existing sidewalks is sufficient, and there are an equal number of sidewalks which have ramps or curbs where they join the street. 20 percent of sidewalks in Cuba are ADA accessible.

On a scale of 1-10, with "1" being unimportant and "10" being very important, sidewalks are considered a "10" to the citizens of Cuba. Sidewalks exist on streets leading to the schools in Cuba. Crosswalks exist at the schools. Students must cross a major state highway to get to school.

In the future, due to citizen interest, the city will seek to expand existing sidewalks. Specifically, the construction of new sidewalks along the entire length of Highway PP and to improve 80 percent of the existing sidewalk inventory. The jurisdiction does not have, but is considering the development of a comprehensive sidewalk plan. The motive for the city to have a comprehensive sidewalk plan is accessibility.



# City of Cuba, MO Sidewalks



**Legend**

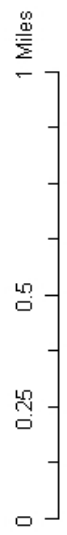
**City Sidewalks**

**CONDITION**

- Fair - Approx. 12,550 feet
- Good - Approx. 39,650 feet
- Poor - Approx. 5,700 feet

To the best of the author's knowledge, the data presented here is true and correct. However, no responsibility is assumed by the author. Data for this map was gathered through a "windshield" survey and is intended to be a general representation of sidewalk condition only.

Created by the  
Meramec Regional  
Planning Commission  
4 Industrial Drive  
St. James, MO 65559  
in partnership with the  
Missouri Department of  
Transportation  
March 2013



# City of Steelville

## Sidewalk Inventory

This inventory was completed in February 2013 by the city of Steelville, with assistance from the Meramec Regional Planning Commission. Data for the map was gathered through a “windshield” survey and is only intended to be a general representation of sidewalk condition.

### Sidewalk Conditions

The city of Steelville has approximately 13,675 linear feet (2.6 miles) of existing sidewalks. The majority of the sidewalks are considered to be in good condition. Most of the good sidewalks are located along main thoroughfares. The table below shows the condition of sidewalks.

Condition	Approximate Linear Feet	Percent of Total
Good	7,940	58
Fair	2,045	15
Poor	3,690	27
Totals:	13,675	100

### Photo Examples



Good Condition: Main Street, south side looking east toward S. 4<sup>th</sup> Street



Fair Condition: Cedar Street, south side looking east from Hickory Street



Poor Condition: Main Street, north side looking west toward S. Spring Street



## **Questionnaire Results**

The city of Steelville currently does not have sidewalk codes that address maintenance, construction and snow removal. Sidewalks exist in the downtown area, and are generally of good condition. The adequacy of sidewalks in Steelville is poor. Width of existing sidewalks is poor, and a majority of sidewalks have curbs where they join the street.

None of the existing sidewalks in Steelville are ADA accessible.

On a scale of 1-10, with "1" being unimportant and "10" being very important, sidewalks are considered an "8" to the citizens of Steelville. Sidewalks do not exist on streets leading to the schools. Crosswalks do exist at the schools. A majority of the students have to cross major state highways to get to school.

At this time, due to citizen interest, the city will seek to expand existing sidewalks specifically to provide a safe route to the schools and to improve or replace existing sidewalks to make them ADA compliant. The jurisdiction does not currently have, but is developing, a comprehensive sidewalk plan. The motive for the city to have a comprehensive sidewalk plan is health/wellness, beautification and accessibility.

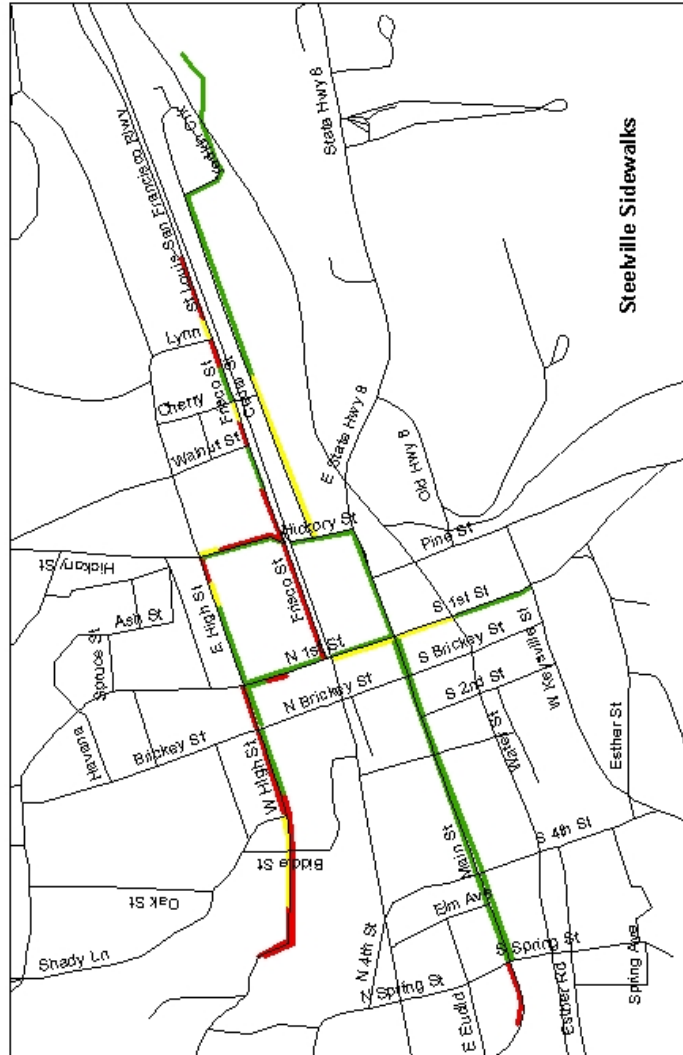
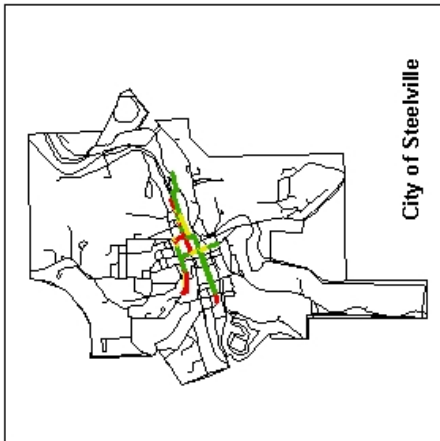
# City of Steelville, MO Sidewalks



**Legend**

**City Sidewalks**

- Fair-Approx. 2,045 feet
- Good-Approx. 7,940 feet
- Poor-Approx. 3,690 feet



Created by the  
Meramec Regional  
Planning Commission  
4 Industrial Drive  
St. James, MO 65559  
in partnership with the  
Missouri Department of  
Transportation  
February 2013



To the best of the author's knowledge, the data presented here is true and correct. However, no responsibility is assumed by the author. Data for this map was gathered through a "windshield" survey and is intended to be a general representation of sidewalk condition only.

# City of Salem

## Sidewalk Inventory

This inventory was completed in April 2013 by the city of Salem, with assistance from the Meramec Regional Planning Commission. Data for the map was gathered through a “windshield” survey and is only intended to be a general representation of sidewalk condition.

### Sidewalk Conditions

The city of Salem has approximately 131,670 linear feet (24.9 miles) of existing sidewalks. The majority of the sidewalks are considered to be in good condition. The good sidewalks are located throughout town. The table below shows the condition of sidewalks.

Condition	Approximate Linear Feet	Percent of Total
Good	108,970	83
Fair	18,650	14
Poor	4,050	3
Totals:	131,670	100

### Photo Examples



Good Condition: South end of Jackson Street, east side looking north





Fair Condition: Intersection of N. Henderson and 5<sup>th</sup> Street, north side looking west



Poor Condition: N. Main Street, east side looking north (adjacent to historical marker)

## **Questionnaire Results**

The city of Salem currently does not have sidewalk codes that address maintenance, construction and snow removal. Sidewalks exist in the downtown area, and are generally of fair condition. The adequacy of sidewalks in Salem is also good. Width of existing sidewalks is fair, and there are an equal number of sidewalks which have ramps or curbs where they join the street.

30 percent of sidewalks in Salem are ADA accessible.

On a scale of 1-10, with "1" being unimportant and "10" being very important, sidewalks are considered a "7" to the citizens of Salem. Sidewalks exist on streets leading to the schools in Salem and crosswalks exist at the schools. Some students have to cross major state highways to get to school.

At this time, due to citizen interest, the city will seek to expand existing sidewalks by replacing sidewalks which are cracked, broken or narrow in the business district, parks and school areas. The motives for the city to have a comprehensive sidewalk plan are health/wellness, accessibility and reducing environmental impact.

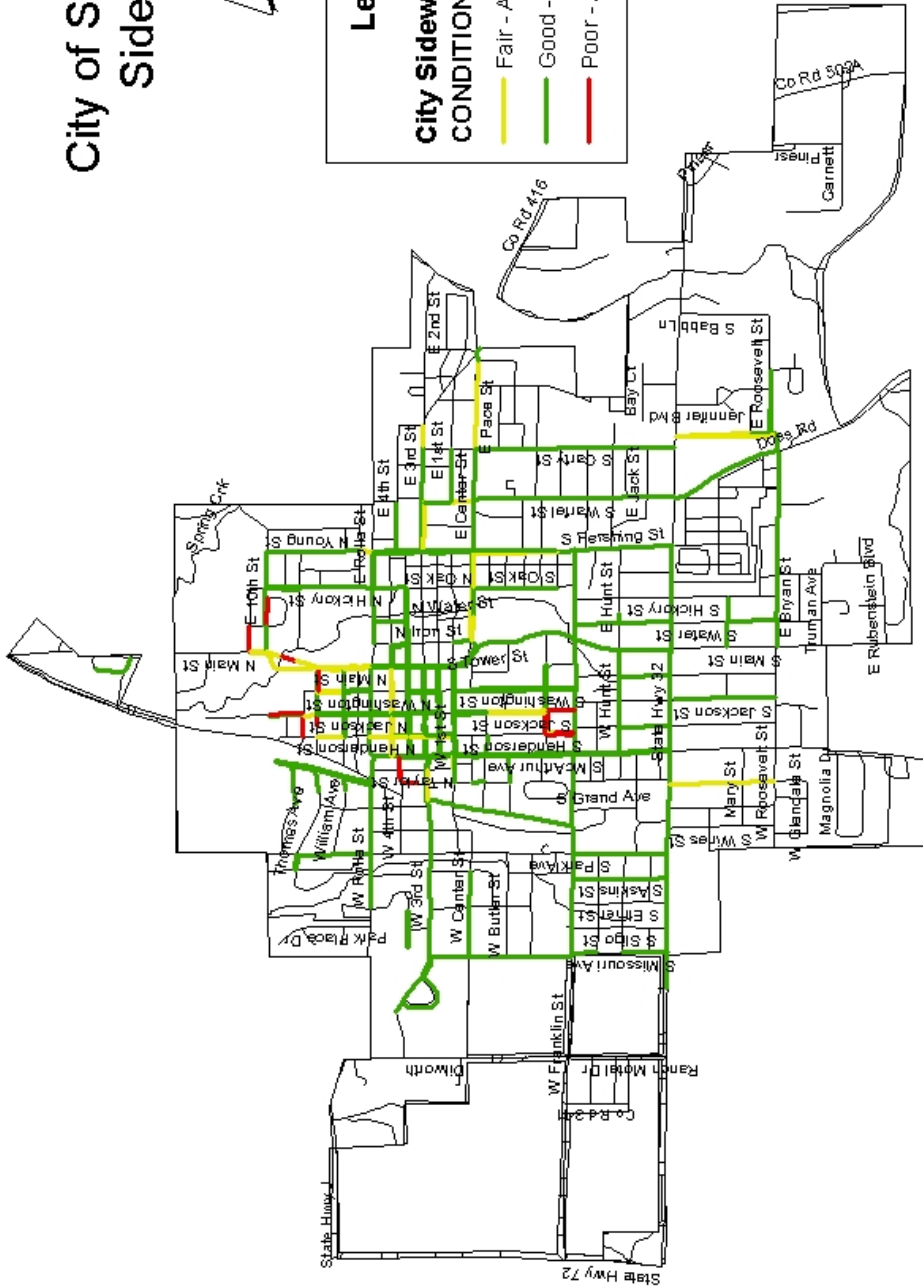
# City of Salem, MO Sidewalks



## Legend

### City Sidewalks CONDITION

- Fair - Approx. 18,650 feet
- Good - Approx. 108,970 feet
- Poor - Approx. 4,050 feet



To the best of the author's knowledge, the data presented here is true and correct. However, no responsibility is assumed by the author. Data for this map was gathered through a "windshield" survey and is intended to be a general representation of sidewalk condition only.

Created by the  
Meramec Regional  
Planning Commission  
4 Industrial Drive  
St. James, MO 65559  
in partnership with the  
Missouri Department of  
Transportation  
May 2013



# City of Owensville

## Sidewalk Inventory

This inventory was completed in February 2013 by the city of Owensville, with assistance from the Meramec Regional Planning Commission. Data for the map was gathered through a “windshield” survey and is only intended to be a general representation of sidewalk condition.

### Sidewalk Conditions

The city of Owensville has approximately 89,050 linear feet (16.9 miles) of existing sidewalks. The majority of the sidewalks are considered to be in fair condition. Most of the good sidewalks are located south of Highway 28 and west of Highway 19. The table below shows the condition of sidewalks.

Condition	Approximate Linear Feet	Percent of Total
Good	33,180	37
Fair	38,220	43
Poor	17,650	20
Totals:	89,050	100

### Photo Examples



Good Condition: S. 1<sup>st</sup> Street, west side looking south toward E. Washington Avenue



Fair Condition: Intersection of W. Jackson Avenue and S. 2<sup>nd</sup> Street, looking northeast



Poor Condition: W. Washington Avenue west of S. 3<sup>rd</sup> Street, south side looking west

## **Questionnaire Results**

The city of Owensville currently does not have sidewalk codes that address maintenance, construction and snow removal. Sidewalks exist in the downtown area, and are generally of good condition. The adequacy of sidewalks in Owensville is fair. Width of existing sidewalks is fair, and a majority of sidewalks have curbs where they join the street.

10 percent of sidewalks in Owensville are ADA accessible.

On a scale of 1-10, with “1” being unimportant and “10” being very important, sidewalks are considered a “10” to the citizens of Owensville. Sidewalks do not exist on streets leading to the schools in Owensville. Crosswalks do not exist at the schools. A majority of the students have to cross major state highways to get to school.

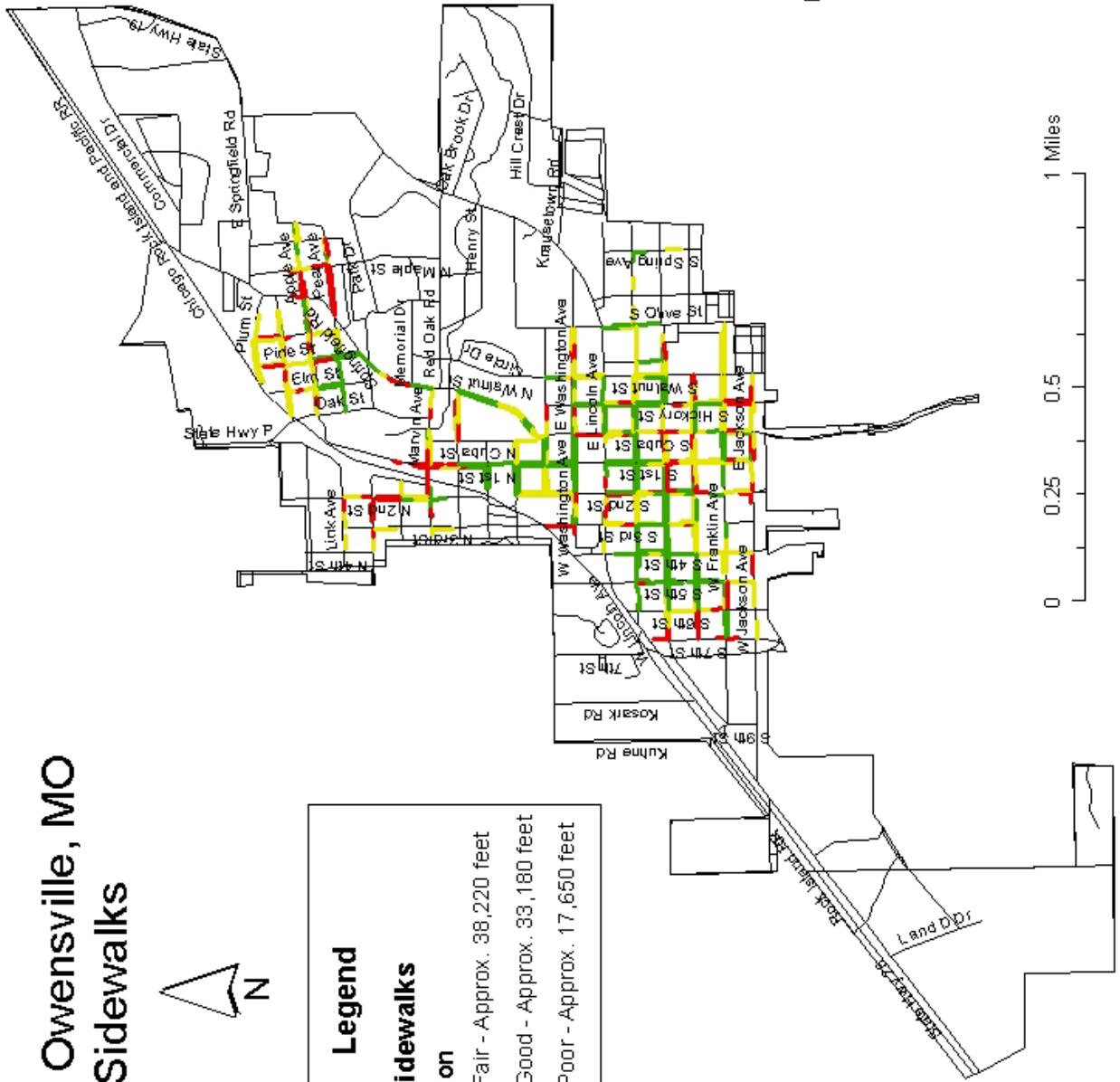
In the future, due to citizen interest, the city will seek to expand existing sidewalks into unserved areas such as routes to schools, downtown and residential areas as well as provide ADA accessible ramps to existing sidewalks. The jurisdiction does not have, but is considering the development of a comprehensive sidewalk plan. The motive for the city to have a comprehensive sidewalk plan is accessibility.



# City of Owensville, MO Sidewalks



Legend	
City Sidewalks Condition	
<span style="color: yellow;">—</span>	Fair - Approx. 38,220 feet
<span style="color: green;">—</span>	Good - Approx. 33,180 feet
<span style="color: red;">—</span>	Poor - Approx. 17,650 feet



Created by the  
Meramec Regional  
Planning Commission  
4 Industrial Drive  
St. James, MO 65559  
in partnership with the  
Missouri Department of  
Transportation  
March 2013

To the best of the author's knowledge, the data presented here is true and correct. However, no responsibility is assumed by the author. Data for this map was gathered through a "windshield" survey and is intended to be a general representation of sidewalk condition only.

# City of Crocker Sidewalk Inventory

This inventory was completed in March 2013 by the city of Crocker, with assistance from the Meramec Regional Planning Commission. Data for the map was gathered through a “windshield” survey and is only intended to be a general representation of sidewalk condition.

## Sidewalk Conditions

The city of Crocker has approximately 10,400 linear feet (2.0 miles) of existing sidewalks. The majority of the sidewalks are considered to be in fair condition. Most of the good sidewalks are located from downtown along North Commercial Street to the intersection of York Street. The table below shows the condition of sidewalks.

Condition	Approximate Linear Feet	Percent of Total
Good	4,070	39
Fair	2,440	24
Poor	3,890	37
Totals:	10,400	100

## Photo Examples



Good Condition: North Commercial Street, west side looking north



Fair Condition: North Commercial Street, east side looking north



Poor Condition: Eastside Street, west side looking north



## **Questionnaire Results**

The city of Crocker currently does not have sidewalk codes that address maintenance, construction and snow removal. Sidewalks exist in the downtown area, and are generally of good condition. The adequacy of sidewalks in Crocker is also fair. Width of existing sidewalks is fair, and there are an equal number of sidewalks which have ramps or curbs where they join the street.

75 percent of sidewalks in Crocker are ADA accessible.

On a scale of 1-10, with "1" being unimportant and "10" being very important, sidewalks are considered a "9" to the citizens of Crocker. Sidewalks exist on streets leading to the schools in Crocker. Crosswalks also exist at the schools. Some students have to cross major state highways to get to school.

At this time, due to citizen interest, the city will seek to expand existing sidewalks. The jurisdiction does not currently have, but is developing, a comprehensive sidewalk plan. The motives for the city to have a comprehensive sidewalk plan are health/wellness and accessibility.

# City of Crocker, MO Sidewalks



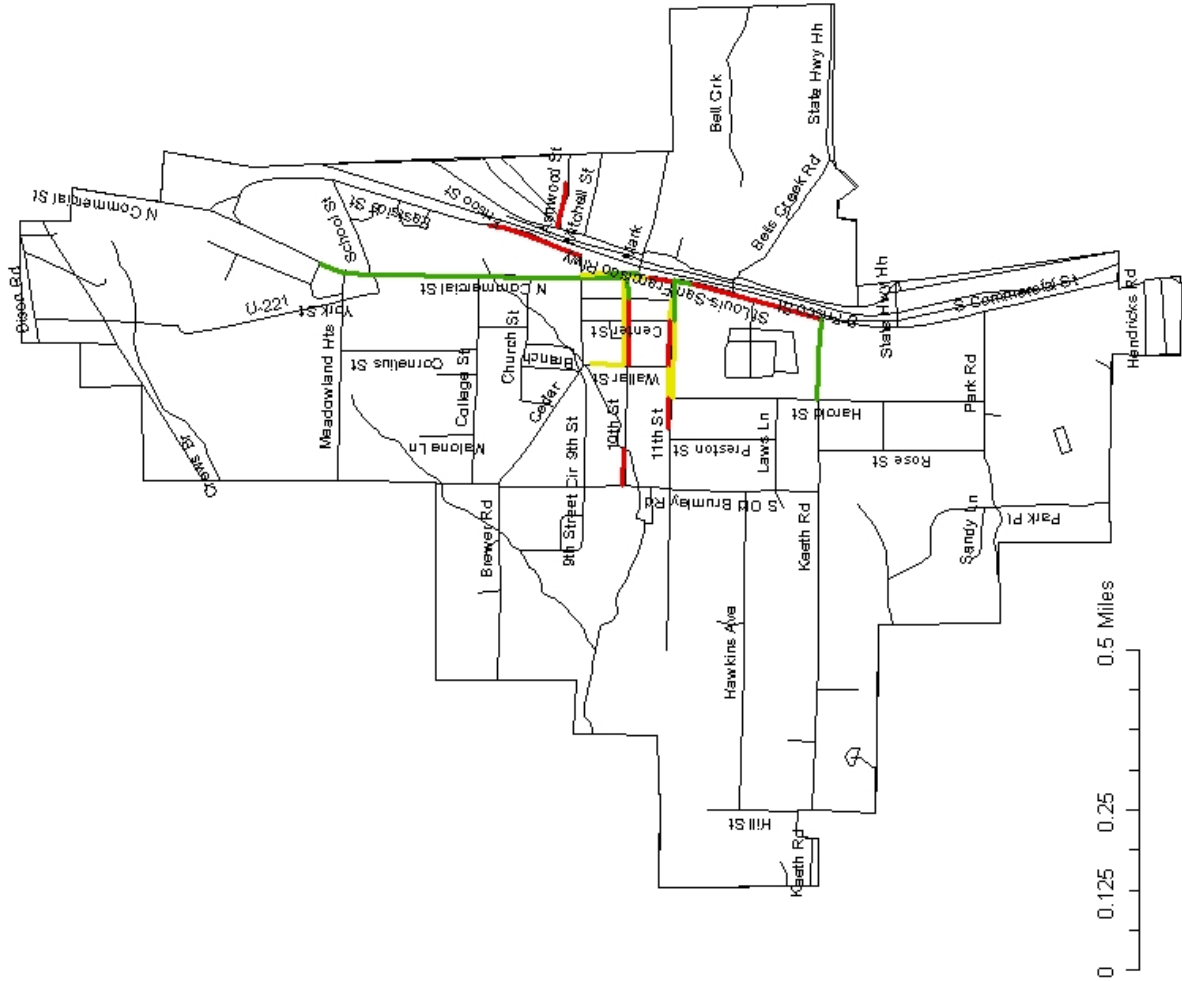
**Legend**

**City Sidewalks Condition**

- Fair-Approx. 2,440 feet
- Good-Approx. 4,070 feet
- Poor-Approx. 3,890 feet

Created by the  
Meramec Regional  
Planning Commission  
4 Industrial Drive  
St. James, MO 65559  
in partnership with the  
Missouri Department of  
Transportation  
March 2013

To the best of the author's  
knowledge, the data  
presented here is true and  
correct. However, no  
responsibility is assumed  
by the author. Data for this  
map was gathered through  
a "windshield" survey  
and is intended to be a  
general representation of  
sidewalk condition only.



# City of Dixon

## Sidewalk Inventory

This inventory was completed in February 2013 by the city of Dixon, with assistance from the Meramec Regional Planning Commission. Data for the map was gathered through a “windshield” survey and is only intended to be a general representation of sidewalk condition.

### Sidewalk Conditions

The city of Dixon has approximately 31,450 linear feet (6 miles) of existing sidewalks. The majority of the sidewalks are considered to be in poor condition. The good sidewalks are located on the south side of E. 3<sup>rd</sup> Street. The table below shows the condition of sidewalks.

Condition	Approximate Linear Feet	Percent of Total
Good	650	2
Fair	18,800	60
Poor	12,000	38
Totals:	31,450	100

### Photo Examples



Good Condition: E. 3<sup>rd</sup> Street, south side looking west





Fair Condition: E. 4<sup>th</sup> Street, south side looking east



Poor Condition: S. Walnut Street, west side looking north

## **Questionnaire Results**

The city of Dixon currently does not have sidewalk codes that address maintenance, construction and snow removal. Sidewalks exist in the downtown area, and are generally of fair condition. The adequacy of sidewalks in Dixon is also poor. Width of existing sidewalks is fair, and there is an equal number of sidewalks which have ramps or curbs where they join the street.

50 percent of sidewalks in Dixon are ADA accessible.

On a scale of 1-10, with "1" being unimportant and "10" being very important, sidewalks are considered a "8" to the citizens of Dixon. Sidewalks exist on streets leading to the schools in Dixon. Crosswalks do not exist at the schools. Some students have to cross major state highways to get to school.

In the future, due to citizen interest, the city will seek to expand existing sidewalks by replacing sidewalks which are cracked, broken or narrow in the business district, parks and school areas. The jurisdiction does not have, but is considering the development of a comprehensive sidewalk plan. The motives for the city to have a comprehensive sidewalk plan are health/wellness and accessibility.

# City of Dixon, MO Sidewalks



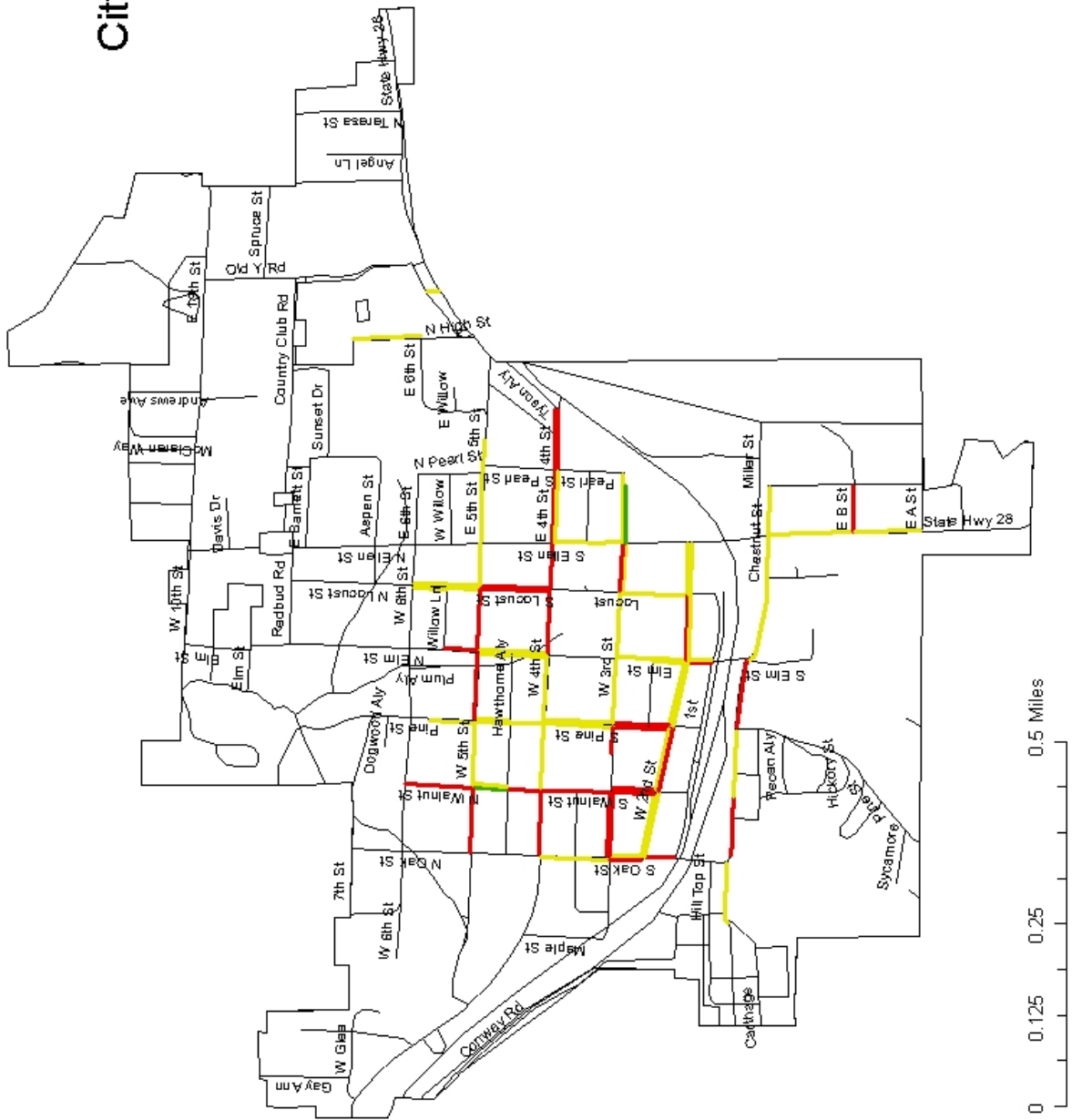
**Legend**

**City Sidewalks**

- Fair-Approx. 18,800 feet
- Good-Approx. 650 feet
- Poor-Approx. 12,000 feet

Created by the  
Meramec Regional  
Planning Commission  
4 Industrial Drive  
St. James, MO 65559  
in partnership with the  
Missouri Department of  
Transportation  
February 2013

To the best of the author's  
knowledge, the data  
presented here is true and  
correct. However, no  
responsibility is assumed  
by the author. Data for this  
map was gathered through  
a "windshield" survey  
and is intended to be a  
general representation of  
sidewalk condition only.





# City of St. Robert

## Sidewalk Inventory

This inventory was completed in January 2013 by the city of St. Robert, with assistance from the Meramec Regional Planning Commission. Data for the map was gathered through a “windshield” survey and is only intended to be a general representation of sidewalk condition.

### Sidewalk Conditions

The city of St. Robert has approximately 104,910 linear feet (19.9 miles) of existing sidewalks. The majority of the sidewalks are considered to be in good condition. Most of the good sidewalks are located on the north side of town or along main thoroughfares. The table below shows the condition of sidewalks.

Condition	Approximate Linear Feet	Percent of Total
Good	91,870	88
Fair	13,040	12
Poor	0	0
Totals:	104,910	100

### Photo Examples



Good Condition: St. Robert Boulevard, south side looking east



Fair Condition: Woodland Lane, south side looking east

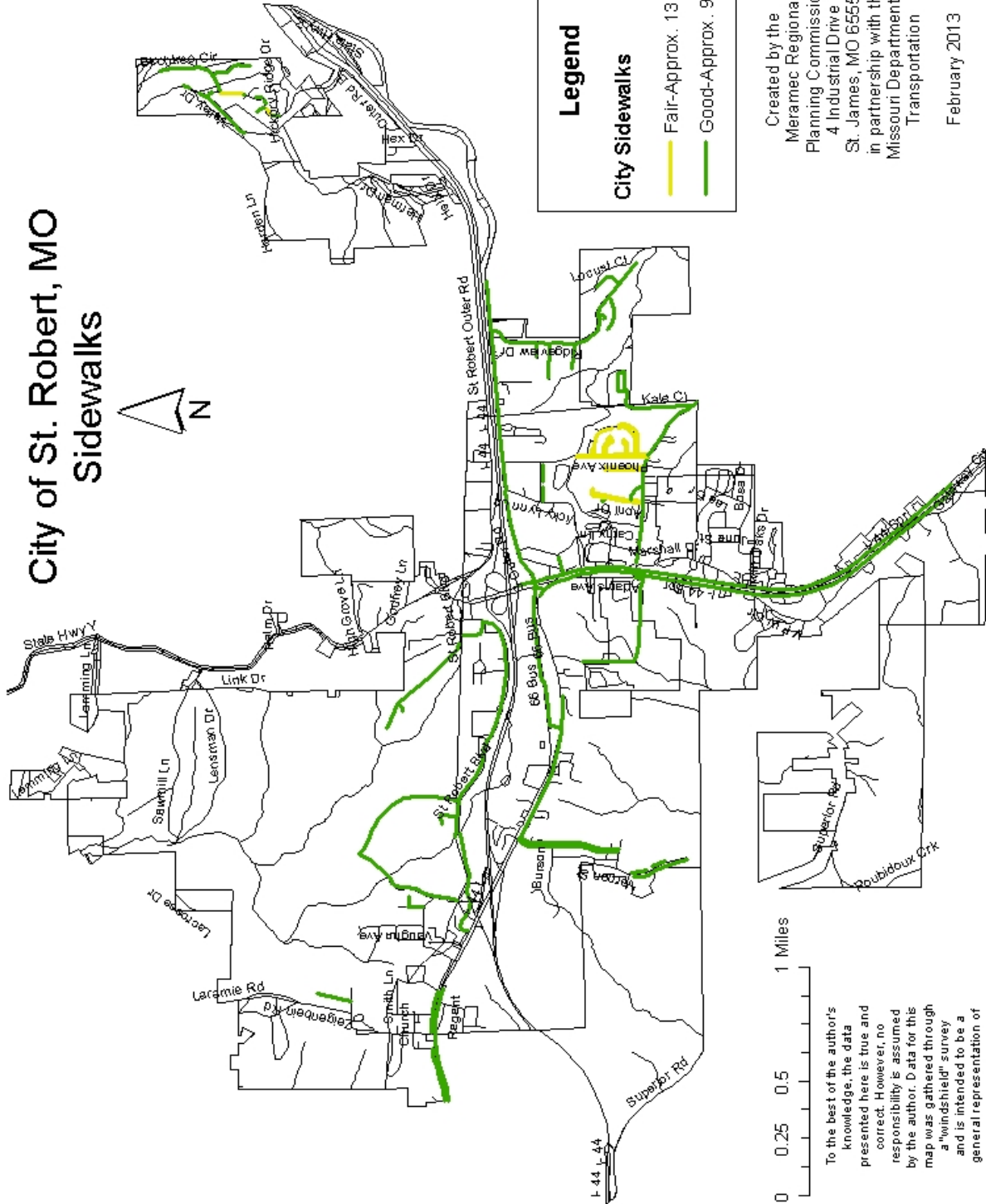
### **Questionnaire Results**

The city of St. Robert currently does have sidewalk codes that address maintenance and construction. Sidewalks exist in the commercial areas, and are generally of fair condition. The adequacy of sidewalks in St. Robert is sufficient. Width of existing sidewalks is sufficient, and there are an equal number of sidewalks which have ramps or curbs where they join the street. 60 percent of sidewalks in St. Robert are ADA accessible.

On a scale of 1-10, with "1" being unimportant and "10" being very important, sidewalks are considered a "10" to the citizens of St. Robert. Sidewalks exist on streets leading to the schools in St. Robert. Crosswalks do not exist at the schools. No students have to cross major state highways to get to school.

At this time, due to citizen interest, the city will seek to expand existing sidewalks, specifically along Eastlawn Avenue, the main route to Freedom Elementary School. The jurisdiction does not currently have, but is developing, a comprehensive sidewalk plan. The motive for the city to have a comprehensive sidewalk plan is accessibility.

# City of St. Robert, MO Sidewalks



**Legend**

**City Sidewalks**

- Fair-Approx. 13,040 feet
- Good-Approx. 91,870 feet

Created by the  
Meramec Regional  
Planning Commission  
4 Industrial Drive  
St. James, MO 65559  
in partnership with the  
Missouri Department of  
Transportation

February 2013





# City of Potosi

## Sidewalk Inventory

This inventory was completed in September 2012 by the city of Potosi, with assistance from the Meramec Regional Planning Commission. Data for the map was gathered through a “windshield” survey and is only intended to be a general representation of sidewalk condition.

### Sidewalk Conditions

The city of Potosi has approximately 24,120 linear feet (4.6 miles) of existing sidewalks. The majority of the sidewalks are considered to be in good condition. Most of the good sidewalks are located in the downtown area. The table below shows the condition of sidewalks.

Condition	Approximate Linear Feet	Percent of Total
Good	13,870	57
Fair	5,450	23
Poor	4,800	20
Totals:	24,120	100

### Photo Examples



Good Condition: N. Missouri Street, between Brenton Street and Hickory Street looking west



Fair Condition: E. Jefferson Street between S. Water Street and Mill Street, looking southeast



Poor Condition: N. Missouri Street between Rosemary Ave and Cordia Ave, looking northeast



## **Questionnaire Results**

The city of Potosi currently has sidewalk codes that address maintenance and construction as part of new development. Sidewalks exist in the downtown area, and are generally of fair condition. Additionally, the adequacy of sidewalks in Potosi is fair as is the width. There are an equal number of sidewalks which have ramps or curbs where they join the street.

50 percent of sidewalks in Potosi are ADA accessible.

On a scale of 1-10, with "1" being unimportant and "10" being very important, sidewalks are considered a "10" to the citizens of Potosi. Sidewalks exist on streets leading to the schools in Potosi and crosswalks exist at the schools. A majority of the students have to cross major state highways to get to school.

At this time, due to citizen interest, the city will seek to expand existing sidewalks into unserved as well as where gaps exist. Targeted areas for expansion/improvements are Main Street and S. Lead Street. The jurisdiction does not currently have, but is developing, a comprehensive sidewalk plan. The motive for the city to have a comprehensive sidewalk plan is health/wellness and accessibility.

**City of Potosi, MO  
Sidewalks**



**Potosi Sidewalks**



**City of Potosi**

**Legend**

**City Sidewalks**

- Fair-Approx. 5,450 feet
- Good-Approx. 13,870 feet
- Poor-Approx. 4,800 feet

Created by the Meramec Regional Planning Commission, 4 Industrial Drive, St. James, MO 65559 in partnership with the Missouri Department of Transportation. February 2013



To the best of the author's knowledge, the data presented here is true and correct. However, no responsibility is assumed by the author. Data for this map was gathered through a "windshield" survey and is intended to be a general representation of sidewalk condition only.

# City of Bland

## Sidewalk Inventory

This inventory was completed in February 2014 by the city of Bland, with assistance from the Meramec Regional Planning Commission. Data for the map was gathered through a “windshield” survey and is only intended to be a general representation of sidewalk condition.

### Sidewalk Conditions

The city of Bland has approximately 21,800 linear feet (4.13 miles) of existing sidewalks. The majority of the sidewalks are considered to be in poor condition. Most of the good sidewalks are located north of Highway 28. The table below shows the condition of sidewalks.

Condition	Approximate Linear Feet	Percent of Total
Good	3,500	16
Fair	7,800	36
Poor	10,500	48
Totals:	21,800	100

### Photo Examples



Good Condition: E. Kansas City Street, south side looking east from Main Street





Fair Condition: North side of W. Colorado Ave., looking west to Frost Street



Poor Condition: N.W. corner of Taylor and East Missouri, looking north

## Questionnaire Results

The city of Bland currently has sidewalk codes that address maintenance and snow removal. Sidewalks exist in the downtown area, and are generally of good condition. The adequacy of sidewalks in Owensville is fair. Width of existing sidewalks is fair, and a majority of sidewalks have curbs where they join the street.

According to the city none of the sidewalks in Bland are ADA accessible.

On a scale of 1-10, with “1” being unimportant and “10” being very important, sidewalks are considered a “5” to the citizens of Bland. Sidewalks do exist on streets leading to the school in Bland. Crosswalks do not exist at the school. A majority of the students have to cross a major state highway to get to school.

At this time the city is not seeking to expand its sidewalks. The jurisdiction does not have, but is considering the development of a comprehensive sidewalk plan.

# City of Bland, MO Sidewalks



## Legend

### City Sidewalks

- Fair: Approx. 7,800 feet
- Good: Approx. 3,500 feet
- Poor: Approx. 10,500 feet

Created by the  
Meramec Regional  
Planning Commission  
4 Industrial Drive  
St. James, MO 65559  
in partnership with the  
Missouri Department of  
Transportation  
March 2014



To the best of the author's knowledge, the data presented here is true and correct. However, no responsibility is assumed by the author. Data for this map was gathered through a "windshield" survey and is intended to be a general representation of sidewalk condition only.



# City of Rosebud

## Sidewalk Inventory

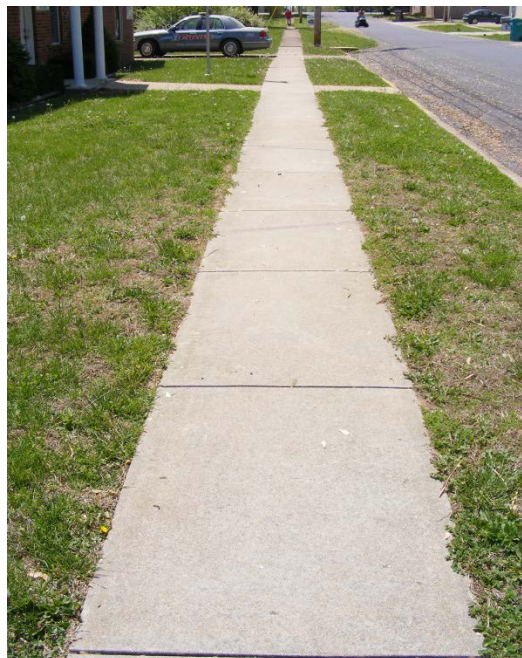
This inventory was completed in May 2014 by the city of Rosebud, with assistance from the Meramec Regional Planning Commission. Data for the map was gathered through a “windshield” survey and is only intended to be a general representation of sidewalk condition.

### Sidewalk Conditions

The city of Rosebud has approximately 10,000 linear feet (1.89 miles) of existing sidewalks. The majority of the sidewalks are considered to be in poor condition. Most of the good sidewalks are located along Highway 50. The table below shows the condition of sidewalks.

Condition	Approximate Linear Feet	Percent of Total
Good	3,450	35
Fair	2,250	22
Poor	4,300	43
Totals:	10,000	100

### Photo Examples



Good Condition: Cedar Street, east side looking south toward Highway 50.





Fair Condition: Cedar Street, east side looking south toward Highway 50.



Poor Condition: Intersection of Highway 50 and 1<sup>st</sup> Street, northwest corner looking east.

## Questionnaire Results

The city of Rosebud currently has sidewalk codes that address maintenance and construction. Sidewalks exist in the downtown area, and are generally of fair condition. The adequacy of sidewalks in Rosebud is poor. Width of existing sidewalks is fair, and a majority of sidewalks have curbs where they join the street.

None of sidewalks in Rosebud are ADA accessible.

On a scale of 1-10, with “1” being unimportant and “10” being very important, sidewalks are considered an “8” to the citizens of Rosebud. There are limited sidewalks leading to the school in Rosebud. Crosswalks do not exist at the school. A majority of the students have to cross a major state highway to get to school.

The city is seeking to expand the sidewalk system in the future. The jurisdiction does not have, but is considering the development of a comprehensive sidewalk plan. Future sidewalk expansion is being considered in the downtown business district and near the elementary school. The motive for the city to expand the sidewalk system is for the health and wellness of the residents as well as accessibility and economic development.

# City of Rosebud, MO Sidewalks



**Legend**

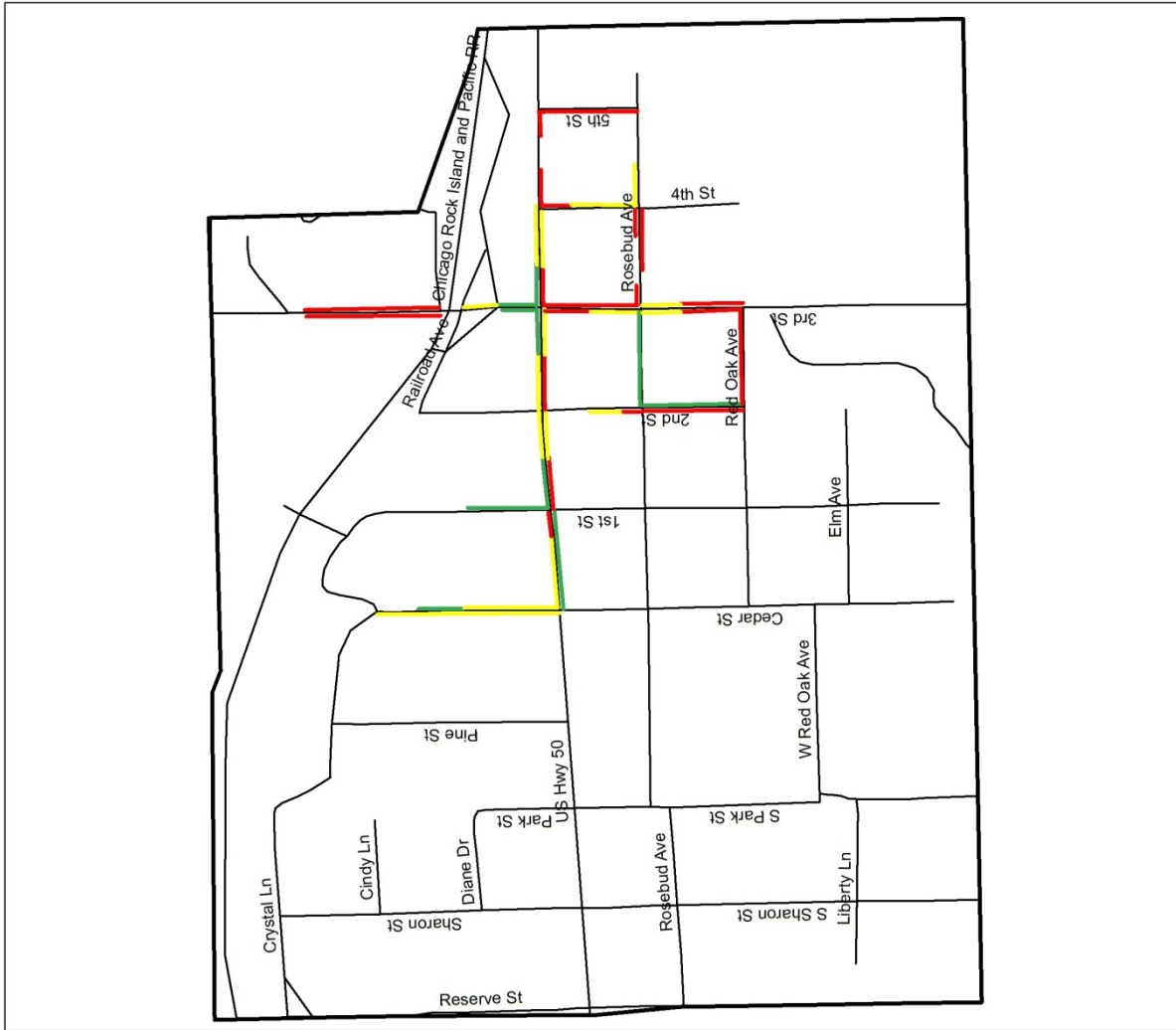
**City Sidewalks**

- Fair: Approx. 3,450 feet
- Good: Approx. 2,250 feet
- Poor: Approx. 4,300 feet

Created by the  
Meramec Regional  
Planning Commission  
4 Industrial Drive  
St. James, MO 65559  
in partnership with the  
Missouri Department of  
Transportation  
May 2014



To the best of the author's knowledge, the data presented here is true and correct. However, no responsibility is assumed by the author. Data for this map was gathered through a "windshield" survey and is intended to be a general representation of sidewalk condition only.



# City of Vienna

## Sidewalk Inventory

This inventory was completed in May 2014 by the city of Vienna, with assistance from the Meramec Regional Planning Commission. Data for the map was gathered through a “windshield” survey and is only intended to be a general representation of sidewalk condition.

### Sidewalk Conditions

The city of Vienna has approximately 6,167 linear feet (1.17 miles) of existing sidewalks. The majority of the sidewalks are considered to be in good condition. Most of the good sidewalks are located in the downtown area. The table below shows the condition of sidewalks.

Condition	Approximate Linear Feet	Percent of Total
Good	5,330	86
Fair	353	6
Poor	484	8
Totals:	6,167	100

### Photo Examples

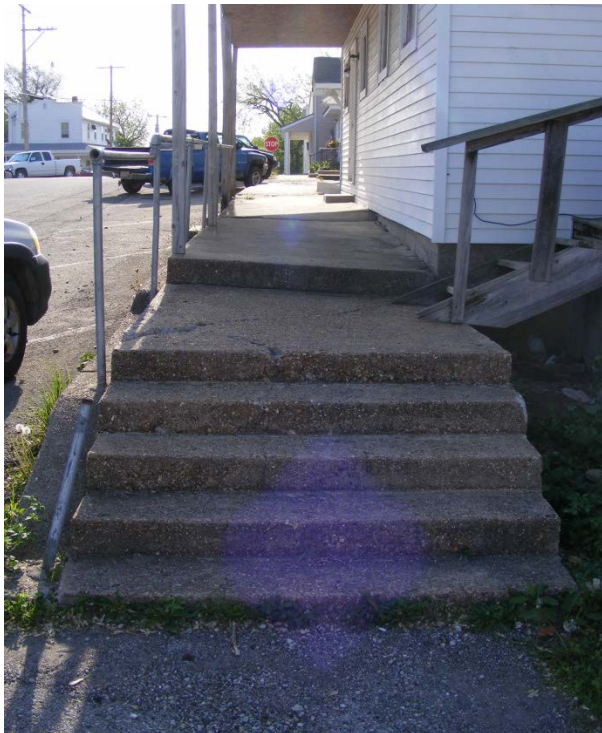


Good Condition: N. Main Street, west side looking north toward 6<sup>th</sup> Street





Fair Condition: 5<sup>th</sup> Street, south side looking west



Poor Condition: Intersection of 3<sup>rd</sup> Street and Coffey Street, southeast corner looking east.

## Questionnaire Results

All sidewalks in the city of Vienna are the property of the individual property owners. The city of Vienna currently has sidewalk codes that address maintenance and construction. Sidewalks exist in the downtown area, and are generally of good condition. The adequacy of sidewalks in Vienna is poor. Width of existing sidewalks is sufficient, and a majority of sidewalks have curbs or steps where they join the street.

10 percent of sidewalks in Vienna are ADA accessible.

On a scale of 1-10, with “1” being unimportant and “10” being very important, sidewalks are considered a “10” to the citizens of Vienna. Sidewalks exist on 5<sup>th</sup> Street leading to the school in Vienna. Crosswalks do not exist at the schools. A majority of the students have to cross a major state highway to get to school.

The city is currently in the process of expanding the sidewalk system, by constructing a sidewalk along Ball Park Road. This project is funded through a transportation enhancement grant. The jurisdiction does not have, but is considering the development of a comprehensive sidewalk plan. The motive for the city to expand the sidewalk system is for the health and wellness of the residents as well as accessibility.

# City of Vienna, MO Sidewalks

**Legend**

**City Sidewalks**

- █ Good Approx. 5,330 feet
- █ Fair Approx. 353 feet
- █ Poor Approx. 484 feet

Created by the  
Meramec Regional  
Planning Commission  
4 Industrial Drive  
St. James, MO 65559  
In partnership with the  
Missouri Department of  
Transportation  
May 2014

To the best of the author's knowledge, the data presented here is true and correct. However, no responsibility is assumed by the author. Data for this map was gathered through a "windshield" survey and is intended to be a general representation of sidewalk condition only.



# City of Chamois

## Sidewalk Inventory

This inventory was completed in May 2014 by the city of Chamois, with assistance from the Meramec Regional Planning Commission. Data for the map was gathered through a “windshield” survey and is only intended to be a general representation of sidewalk condition.

### Sidewalk Conditions

The city of Vienna has approximately 14,130 linear feet (2.7 miles) of existing sidewalks. The majority of the sidewalks are considered to be in good condition. Most of the good sidewalks are located south of the Union Pacific Rail Road. The table below shows the condition of sidewalks.

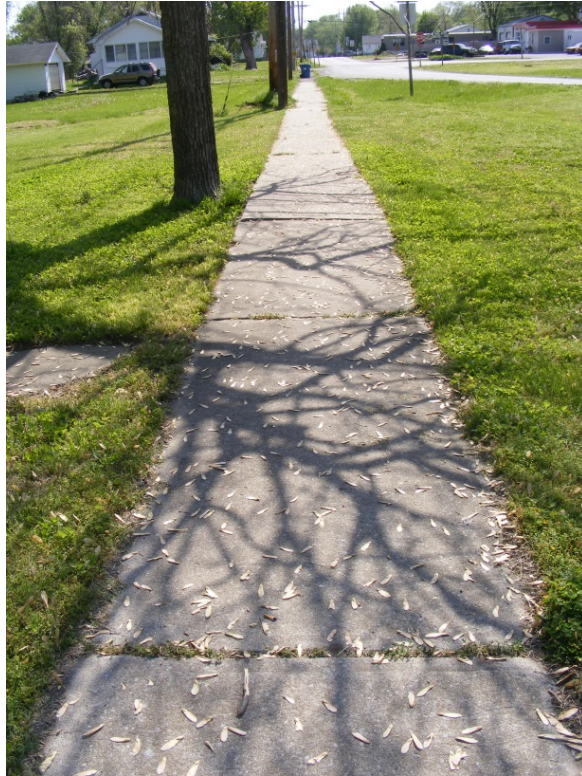
Condition	Approximate Linear Feet	Percent of Total
Good	7,380	52
Fair	3,190	23
Poor	3,560	25
Totals:	14,130	100

### Photo Examples



Good Condition: Main Street, east side looking north toward Missouri Avenue.





Fair Condition: Missouri Avenue, north side looking east.



Poor Condition: Main Street, north of Missouri Avenue looking north.

## Questionnaire Results

The city of Chamois does not have sidewalk codes that address maintenance, construction and snow removal. Sidewalks exist in the downtown area, and are generally of good condition. The adequacy of sidewalks in Chamois is poor. Width of existing sidewalks is fair, and an equal number of sidewalks have curbs or ramps where they join the street.

30 percent of sidewalks in Chamois are ADA accessible.

On a scale of 1-10, with “1” being unimportant and “10” being very important, sidewalks are considered a “9” to the citizens of Chamois. ADA compliant sidewalks with crosswalks exist on streets leading to the school. A majority of the students have to cross a major state highway to get to school.

The city currently has no desire to expand the existing sidewalk system and does not have a comprehensive sidewalk plan.





# City of Freeburg

## Sidewalk Inventory

This inventory was completed in May 2014 by the city of Freeburg, with assistance from the Meramec Regional Planning Commission. Data for the map was gathered through a “windshield” survey and is only intended to be a general representation of sidewalk condition.

### Sidewalk Conditions

The city of Freeburg has approximately 4,580 linear feet (0.87 mile) of existing sidewalks. The majority of the sidewalks are considered to be in good condition. Most of the good sidewalks are located along Holy Family Road. The table below shows the condition of sidewalks.

Condition	Approximate Linear Feet	Percent of Total
Good	2,600	57
Fair	600	13
Poor	1,380	30
Totals:	4,580	100

### Photo Examples

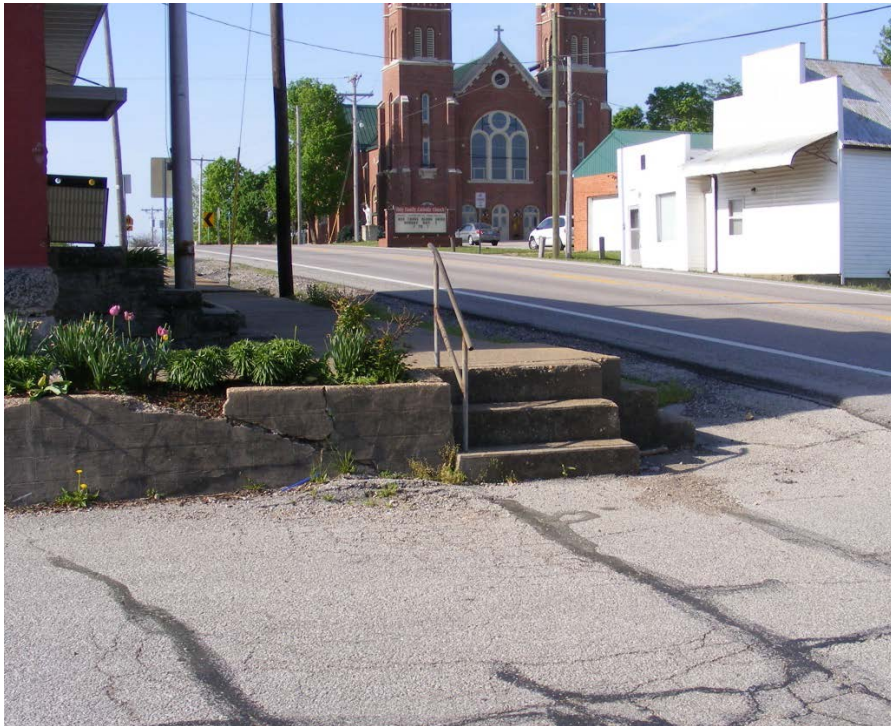


Good Condition: Holy Family Road, west side looking south.





Fair Condition: Locust Street (Highway 63), west side looking north.



Poor Condition: Intersection of Locust Street (Highway 63) and Gilbert Avenue, southeast corner looking south.

## Questionnaire Results

The city of Freeburg currently does not have sidewalk codes that address maintenance, construction or snow removal. Sidewalks are predominately along Locust Street and Holy Family Road and are in fair condition. The adequacy of sidewalks in Freeburg is sufficient. Width of existing sidewalks is sufficient, and a majority of the older sidewalks along Locust Street have curbs or steps where they join the street.

80 percent of sidewalks in Vienna are ADA accessible.

On a scale of 1-10, with “1” being unimportant and “10” being very important, sidewalks are considered a “7” to the citizens of Freeburg. Sidewalks do exist leading to the parochial school in Freeburg. Crosswalks do exist at the school. A majority of the students have to cross a major state highway to get to school.

The city currently has no desire to expand the existing sidewalk system and does not have a comprehensive sidewalk plan.

# City of Freeburg, MO Sidewalks

**Legend**

City Sidewalks

- Good Approx. 2,600 feet
- Fair Approx. 600 feet
- Poor Approx. 1,380 feet

Created by the  
Meramec Regional  
Planning Commission  
4 Industrial Drive  
St. James, MO 65559  
in partnership with the  
Missouri Department of  
Transportation  
May 2014

To the best of the author's knowledge, the data presented here is true and correct. However, no responsibility is assumed by the author. Data for this map was gathered through a "windshield" survey and is intended to be a general representation of sidewalk condition only.



# City of Doolittle

## Sidewalk Inventory

The city of Doolittle completed the sidewalk survey during August 2013. The survey was completed by the Dene Kirn, City Clerk. It was indicated on the survey that Doolittle does not have any existing sidewalks within the city limits and that the city does not have codes or regulations governing the construction or maintenance of sidewalks within its jurisdiction. It was further noted that no schools exist within the city limits.

It was noted that sidewalks are important to the residents and Doolittle is interested in constructing sidewalks on some streets but is financially unable to do so at this time.





# City of Newburg

## Sidewalk Inventory

This inventory was completed in February 2014 by the city of Newburg, with assistance from the Meramec Regional Planning Commission. Data for the map was gathered through a “windshield” survey and is only intended to be a general representation of sidewalk condition.

### Sidewalk Conditions

The city of Newburg has approximately 14,070 linear feet (2.67 miles) of existing sidewalks. The majority of the sidewalks are considered to be in poor condition. Most of the good sidewalks are located along Main Street (Highway T). The table below shows the condition of sidewalks.

Condition	Approximate Linear Feet	Percent of Total
Good	5,350	38
Fair	3,790	27
Poor	4,930	35
Totals:	14,070	100

### Photo Examples



Good Condition: School crossing west side of Main Street (Highway T) near the intersection of Wolf Pride Drive



Fair Condition: N.W. corner of Front Street and Water Street, looking north



Poor Condition: N.W. corner of Front Street and Hollow Street, looking east

## Questionnaire Results

The city of Newburg currently has sidewalk codes that address maintenance. Sidewalks exist in the downtown area, and are generally of good condition. The adequacy of sidewalks in Newburg is fair. Width of existing sidewalks is sufficient, and a majority of sidewalks slope where they join the street.

According to the city none 40 percent of the sidewalks in Newburg are ADA accessible.

On a scale of 1-10, with “1” being unimportant and “10” being very important, sidewalks are considered a “10” to the citizens of Newburg. Sidewalks do exist on streets leading to the school in Newburg. Crosswalks are located at the school. A majority of the students have to cross a major state highway to get to school.

At this time the city is seeking to expand its sidewalks. The jurisdiction does not have, but is considering the development of a comprehensive sidewalk plan. Sidewalk development is targeted toward adding additional sidewalks and to make improvements to sidewalks leading to the school. The motive for expansion of the sidewalk system is for health and wellness as well as increasing accessibility.



# City of Newburg, Missouri Sidewalks



**Legend**

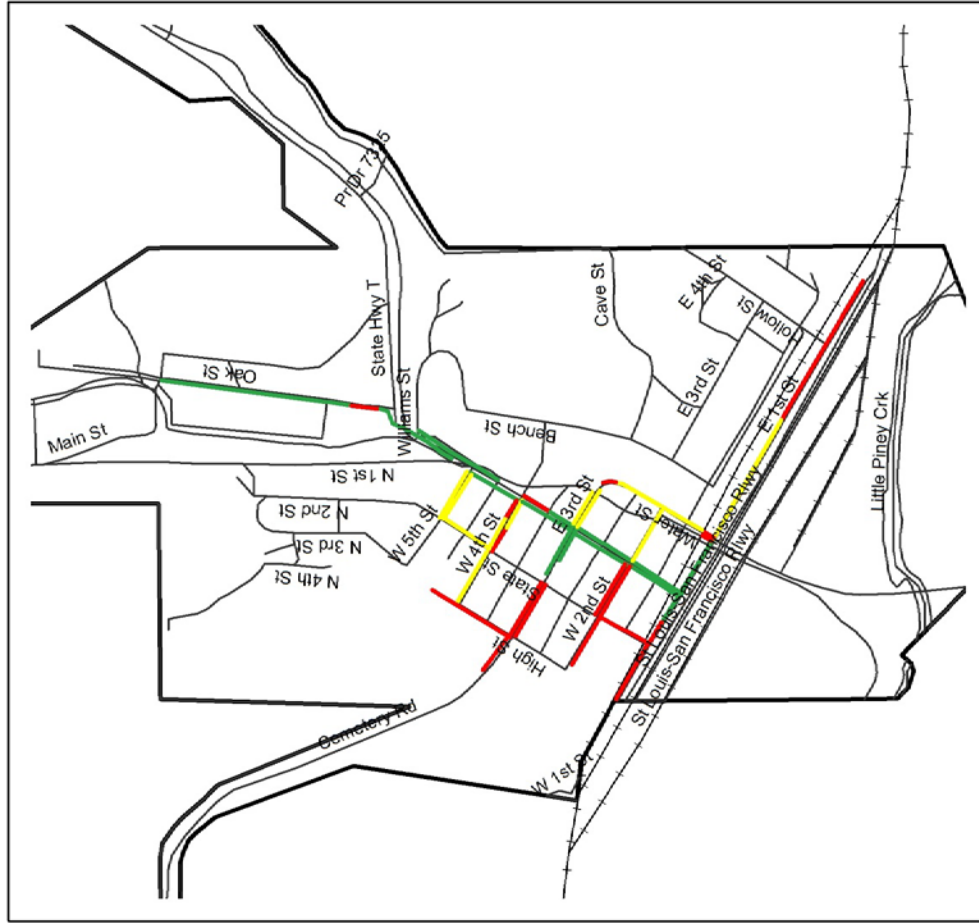
**City Sidewalks**

- Fair: Approx. 3,790 feet
- Good: Approx. 5,350 feet
- Poor: Approx. 4,930 feet

Created by the  
Meramec Regional  
Planning Commission  
4 Industrial Drive  
St. James, MO 65559  
in partnership with the  
Missouri Department of  
Transportation  
March 2014



To the best of the author's knowledge, the data presented here is true and correct. However, no responsibility is assumed by the author. Data for this map was gathered through a "windshield" survey and is intended to be a general representation of sidewalk condition only.



# City of Caledonia

## Sidewalk Inventory

This inventory was completed in May 2014 by the city of Caledonia, with assistance from the Meramec Regional Planning Commission. Data for the map was gathered through a “windshield” survey and is only intended to be a general representation of sidewalk condition.

### Sidewalk Conditions

The city of Caledonia has approximately 2,800 linear feet (0.53 mile) of existing sidewalks. The majority of the sidewalks are considered to be in poor condition. Most of the good sidewalks are located along Main Avenue (Highway 21). The table below shows the condition of sidewalks.

Condition	Approximate Linear Feet	Percent of Total
Good	750	27
Fair	610	22
Poor	1,440	51
Totals:	2,800	100

### Photo Examples



Good Condition: Main Avenue (Hwy 21), east side looking south toward Alexander Street.



Fair Condition: Alexander Street, south side looking east toward College Street.



Poor Condition: Main Avenue (Hwy 21), west side looking north.

## Questionnaire Results

The city of Caledonia does not have sidewalk codes that address maintenance, construction or snow removal. Sidewalks exist in the downtown area, and are generally of poor condition. The adequacy and width of sidewalks in Caledonia are poor. A majority of sidewalks have curbs where they join the street.

None of sidewalks in Irondale are ADA accessible.

On a scale of 1-10, with “1” being unimportant and “10” being very important, sidewalks are considered a “10” to the citizens of Caledonia. There are no schools within city limits.

The city is seeking to expand and upgrade sidewalks in the future when funding becomes available. The jurisdiction currently has a comprehensive sidewalk plan. The expansion and upgrade of the sidewalk system will include the downtown area and from Main Avenue to the city park on Webster Road. The motive for the city to expand and upgrade the sidewalk system is for health and wellness as well as accessibility.



# Village of Caledonia, MO Sidewalks



**Legend**

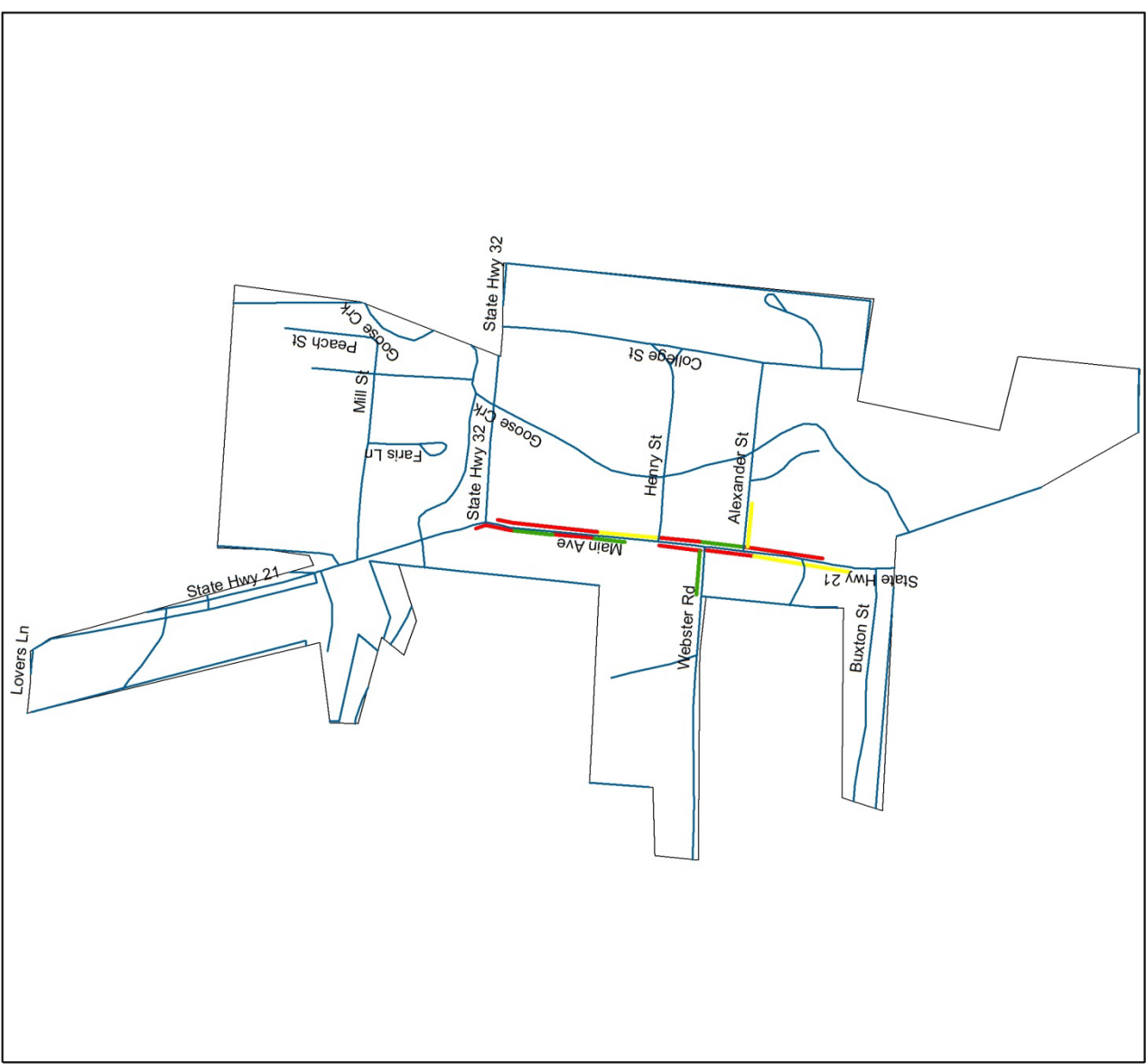
**City Sidewalks**

- Fair-Approx. 750 feet
- Good-Approx. 610 feet
- Poor-Approx. 1,440 feet

Created by the Meramec Regional Planning Commission, 4 Industrial Drive, St. James, MO 65559 in partnership with the Missouri Department of Transportation. May 2014



To the best of the author's knowledge, the data presented here is true and correct. However, no responsibility is assumed by the author. Data for this map was gathered through a "windshield" survey and is intended to be a general representation of sidewalk condition only.



# City of Irondale

## Sidewalk Inventory

This inventory was completed in May 2014 by the city of Irondale, with assistance from the Meramec Regional Planning Commission. Data for the map was gathered through a “windshield” survey and is only intended to be a general representation of sidewalk condition.

### Sidewalk Conditions

The city of Irondale has approximately 11,300 linear feet (2.1 miles) of existing sidewalks. The majority of the sidewalks are considered to be in poor condition. Most of the good sidewalks are located on the east side of Oak Street in the downtown area. The table below shows the condition of sidewalks.

Condition	Approximate Linear Feet	Percent of Total
Good	3,260	29
Fair	1,780	16
Poor	6,260	55
Totals:	11,300	100

### Photo Examples



Good Condition: Linden Street, east side looking south toward Cherry Street



Fair Condition: Cedar Street, south side looking east toward Summit Street



Poor Condition: Intersection of Ash Street and Linden Street, northeast corner looking north.

## Questionnaire Results

The city of Irondale does not have sidewalk codes that address maintenance, construction or snow removal. Sidewalks exist in the downtown area, and are generally of good condition. The adequacy of sidewalks in Irondale is poor. Width of existing sidewalks is sufficient, and a majority of sidewalks have curbs or steps where they join the street.

None of sidewalks in Irondale are ADA accessible.

On a scale of 1-10, with “1” being unimportant and “10” being very important, sidewalks are considered a “10” to the citizens of Irondale. There are no schools within city limits.

The city is seeking to expand and upgrade sidewalks in the future. The jurisdiction does not have, but is considering the development of a comprehensive sidewalk plan. The motive for the city to expand and upgrade the sidewalk system is for accessibility.



# City of Irondale, MO Sidewalks



**Legend**

**City Sidewalks**

- Fair—Approx. 3,260 feet
- Good—Approx. 1,780 feet
- Poor—Approx. 6,260 feet

Created by the Meramec Regional Planning Commission, 4 Industrial Drive, St. James, MO 65559 in partnership with the Missouri Department of Transportation. May 2014



To the best of the author's knowledge, the data presented here is true and correct. However, no responsibility is assumed by the author. Data for this map was gathered through a "windshield" survey and is intended to be a general representation of sidewalk condition only.



# City of Mineral Point

## Sidewalk Inventory

The city of Mineral Point completed the sidewalk survey during January 2014. The survey was completed by the Paula Williams. It was indicated on the survey that Mineral Point does not have any existing sidewalks within the city limits and that the city does not have codes or regulations governing the construction or maintenance of sidewalks within its jurisdiction. It was further noted that no schools exist within the city limits.

It was noted that sidewalks are unimportant to the residents and Mineral Point is not interested in constructing any sidewalks in the foreseeable future.